

**STATE OF NORTH CAROLINA
DEPARTMENT OF ENVIRONMENT AND NATURAL RESOURCES
DIVISION OF MARINE FISHERIES**

RULE: CRAB SPAWNING SANCTUARIES

RULE PUBLISHED IN:
NORTH CAROLINA FISHERIES RULES FOR COASTAL WATERS 2005
BY NORTH CAROLINA MARINE FISHERIES COMMISSION

RULE IDENTIFIED IN:
15A NCAC 03L .0205 - CRAB SPAWNING SANCTUARIES

DESCRIPTIVE BOUNDARIES IN:
15A NCAC 03R .0110 - CRAB SPAWNING SANCTUARIES



DESCRIPTION OF CODING:

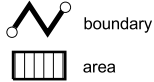
NCAC	NORTH CAROLINA ADMINISTRATIVE CODE
TITLE 15A	DEPARTMENT OF ENVIRONMENT AND NATURAL RESOURCES
CHAPTER 03	MARINE FISHERIES
SUBCHAPTER 03L	SHRIMP, CRABS, AND LOBSTER
.0205	CRAB SPAWNING SANCTUARIES
SUBCHAPTER 03R	DESCRIPTIVE BOUNDARIES
.0110	CRAB SPAWNING SANCTUARIES

**Crab Spawning Sanctuaries
(15A NCAC 03R .0110)**

Rule History Note:
 Authority G.S. 113-134; 113-182; 143B-289.52;
 Eff. January 1, 1991;
 Amended Eff. September 1, 1991;
 Recodified From 15A NCAC 03R .0010 Eff. December 17, 1996;
 Amended Eff. August 1, 2004.

Map legend and rule identifiers

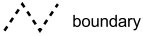
Crab Spawning Sanctuaries



2 a ii B

location from rule

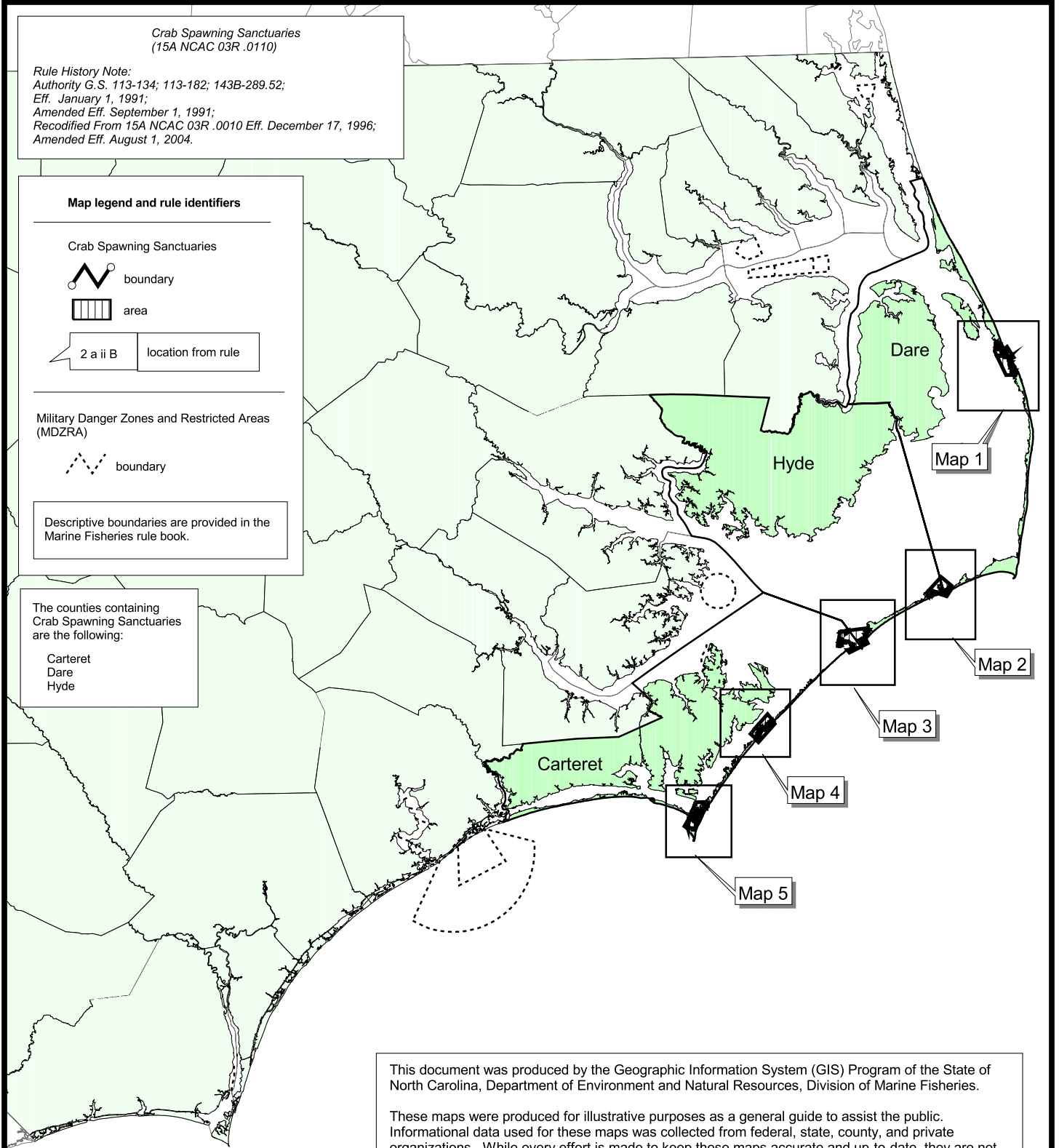
**Military Danger Zones and Restricted Areas
(MDZRA)**



Descriptive boundaries are provided in the
 Marine Fisheries rule book.

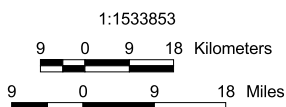
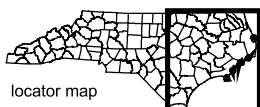
The counties containing
 Crab Spawning Sanctuaries
 are the following:

Carteret
 Dare
 Hyde



This document was produced by the Geographic Information System (GIS) Program of the State of North Carolina, Department of Environment and Natural Resources, Division of Marine Fisheries.

These maps were produced for illustrative purposes as a general guide to assist the public. Informational data used for these maps was collected from federal, state, county, and private organizations. While every effort is made to keep these maps accurate and up-to-date, they are not intended to replace any official source. Under no circumstances shall the State of North Carolina be liable for any actions taken or omissions made from reliance on any information contained herein from whatever source nor shall the State be liable for any other consequences from any such reliance.



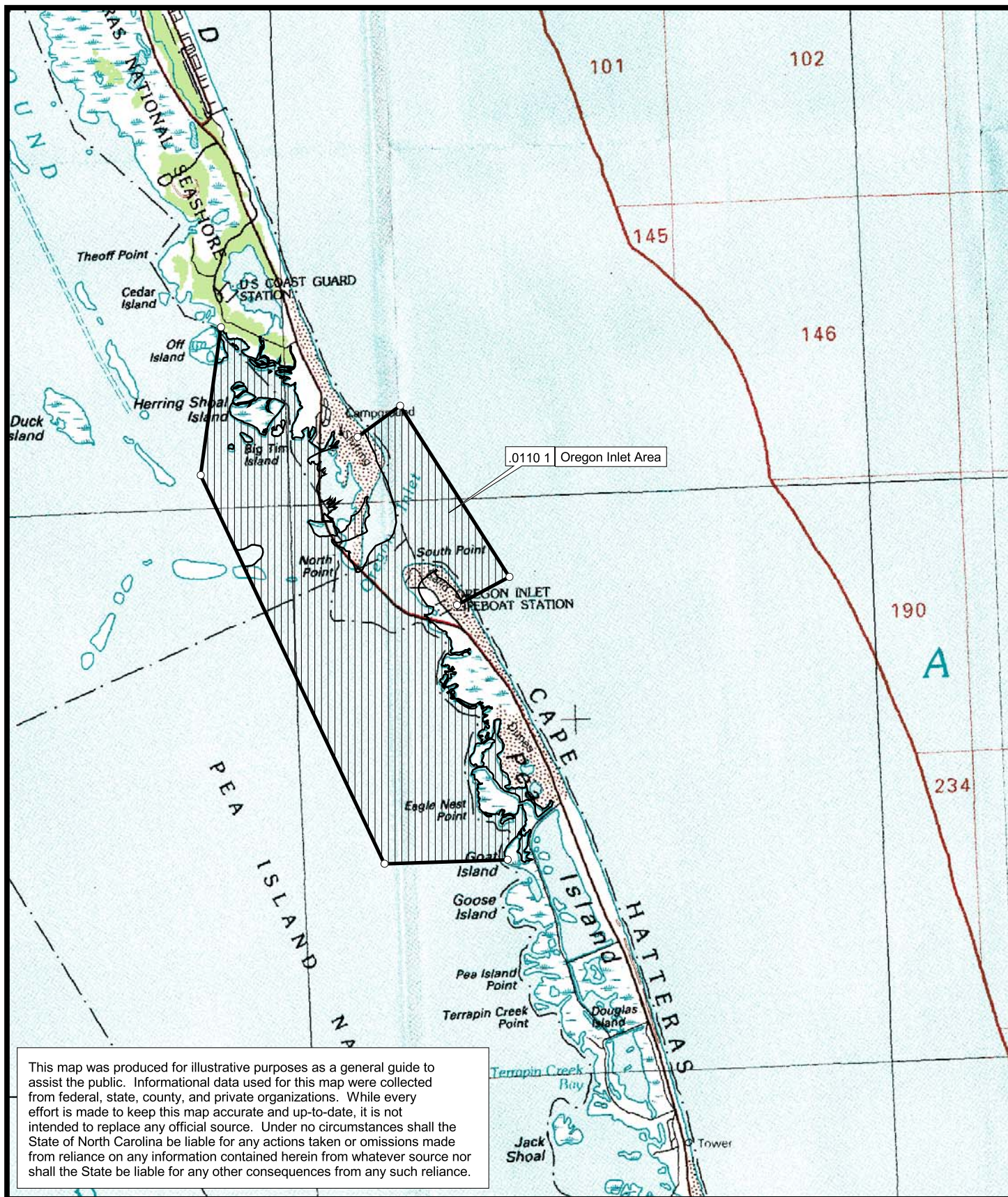
**Crab Spawning Sanctuaries
(15A NCAC 03R .0110)**

(Index Map)
 Map A



Map Datum: North American Datum 1983
 (NAD83)
 Map Projection: North Carolina State Plane
 (NC State Plane)
 Map Date: October 2006





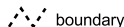
Background imagery are U.S. Geological Survey 1:100,000-scale planimetric maps.



Crab Spawning Sanctuaries



Military Danger Zones and Restricted Areas

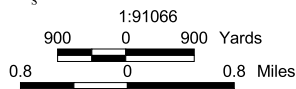


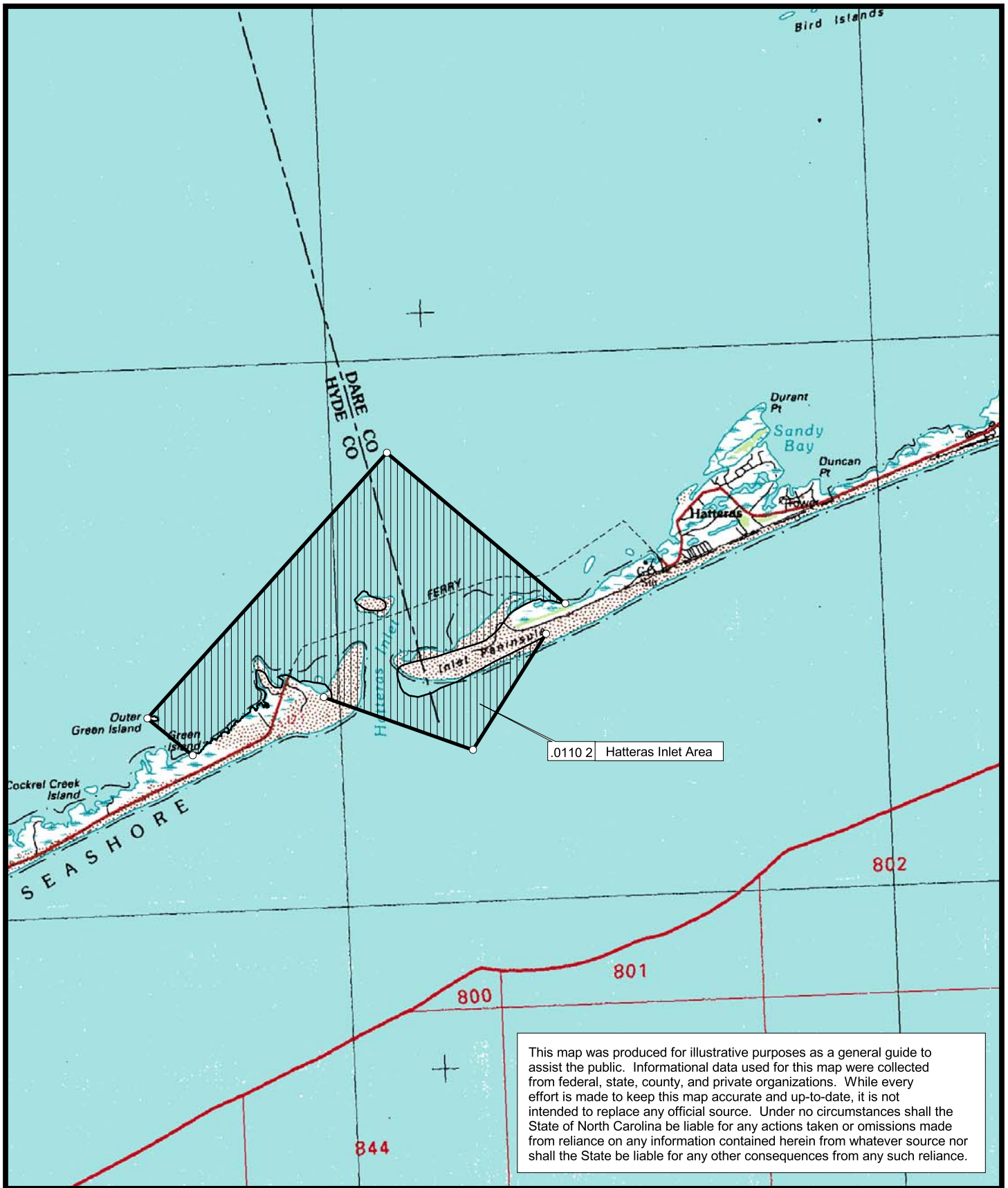
Crab Spawning Sanctuaries (15A NCAC 03R .0110)

Map 1



Map Datum: NAD83
Map Projection: NC State Plane
Map Date: October 2006

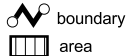




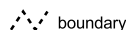
Background imagery are U.S. Geological Survey 1:100,000-scale planimetric maps.



Crab Spawning Sanctuaries



Military Danger Zones and Restricted Areas

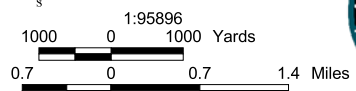


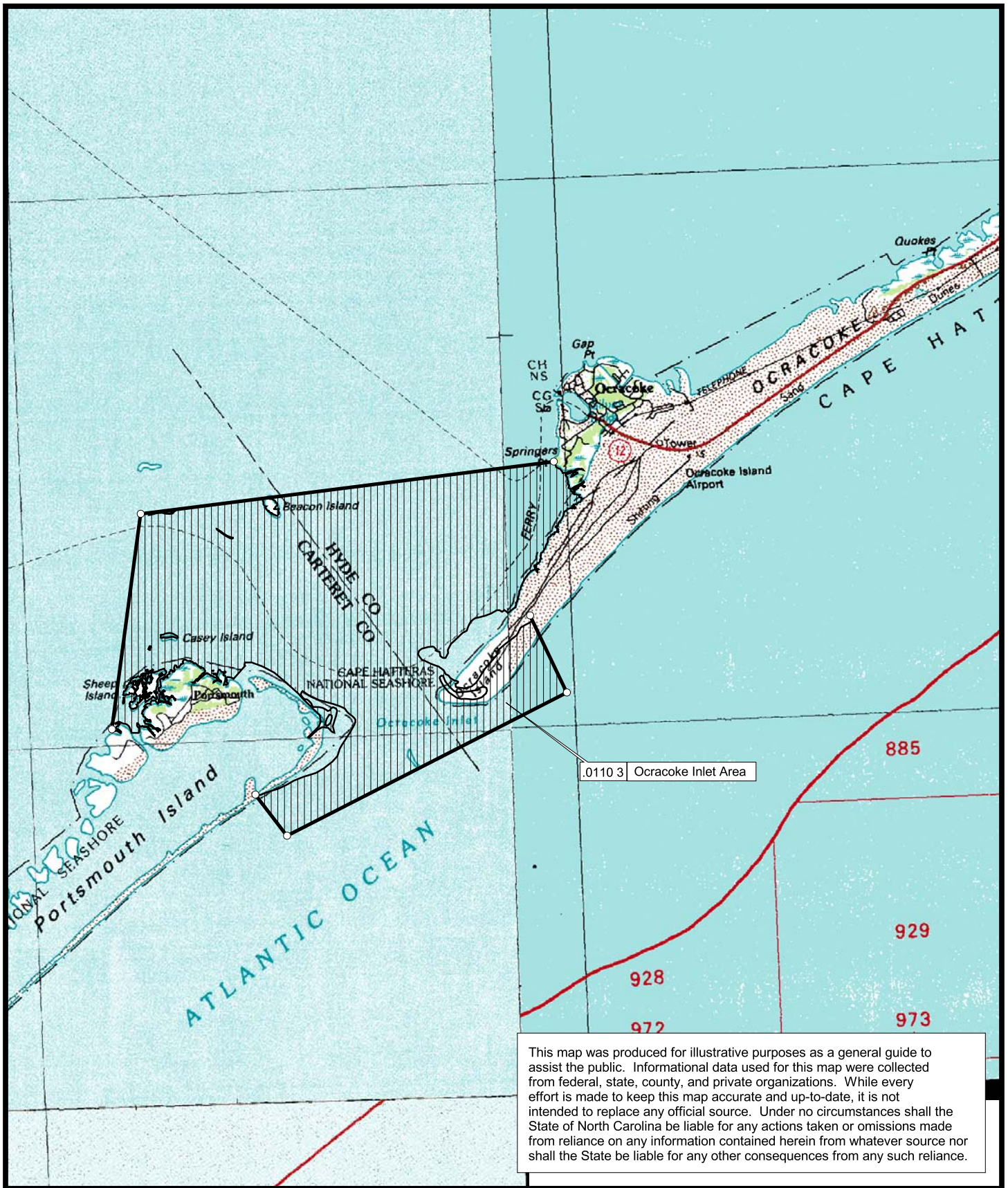
Crab Spawning Sanctuaries (15A NCAC 03R .0110)

Map 2



Map Datum: NAD83
Map Projection: NC State Plane
Map Date: October 2006



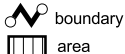


Background imagery are U.S. Geological Survey 1:100,000-scale planimetric maps.

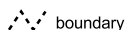


locator map

Crab Spawning Sanctuaries



Military Danger Zones and Restricted Areas



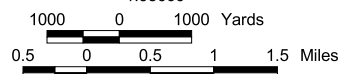
Crab Spawning Sanctuaries (15A NCAC 03R .0110)

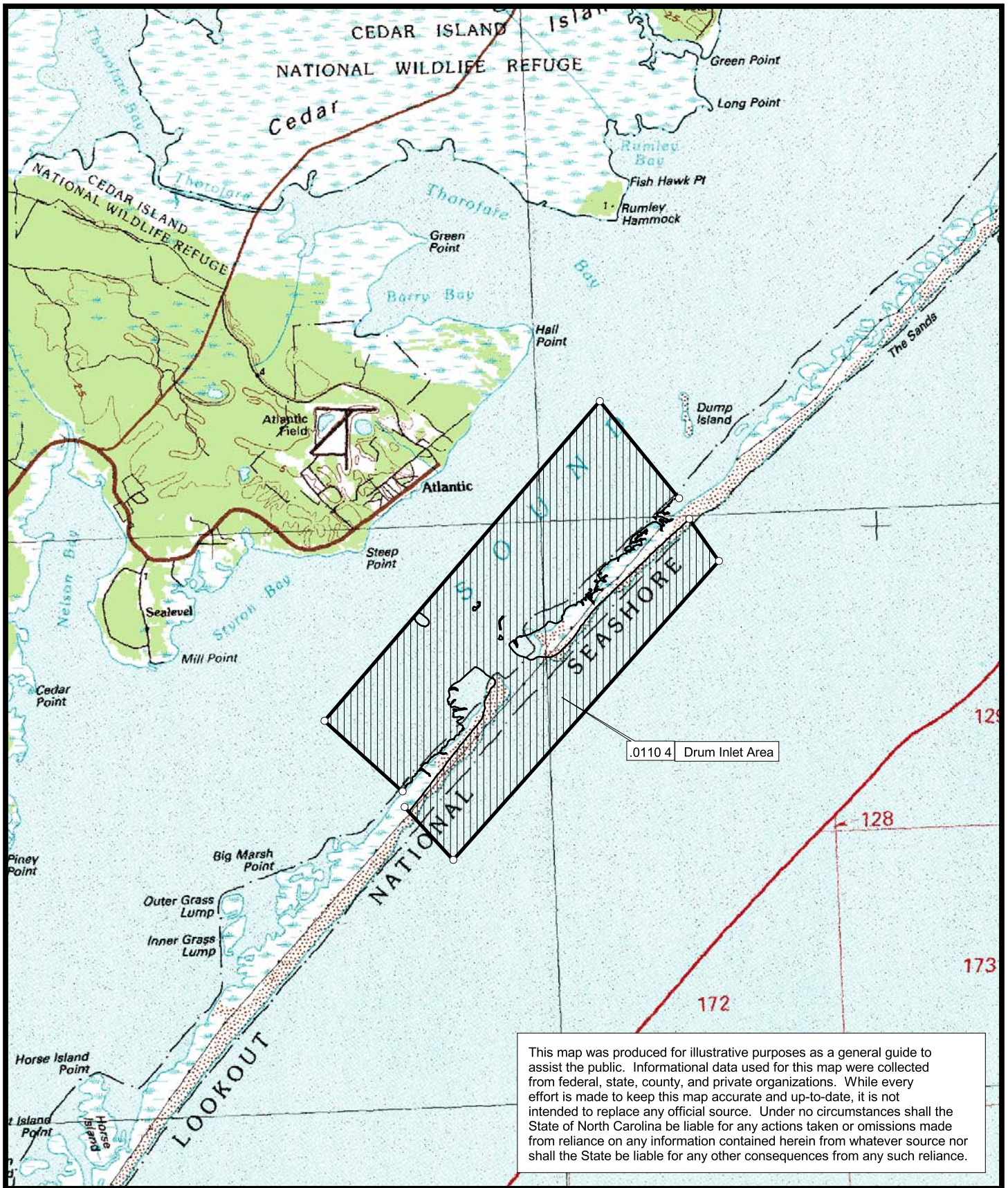
Map 3



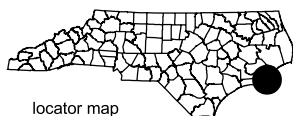
Map Datum: NAD83
Map Projection: NC State Plane
Map Date: October 2006

1:95666

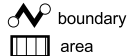




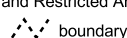
Background imagery are U.S. Geological Survey 1:100,000-scale planimetric maps.



Crab Spawning Sanctuaries



Military Danger Zones and Restricted Areas

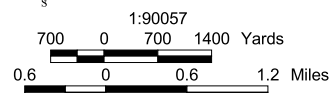


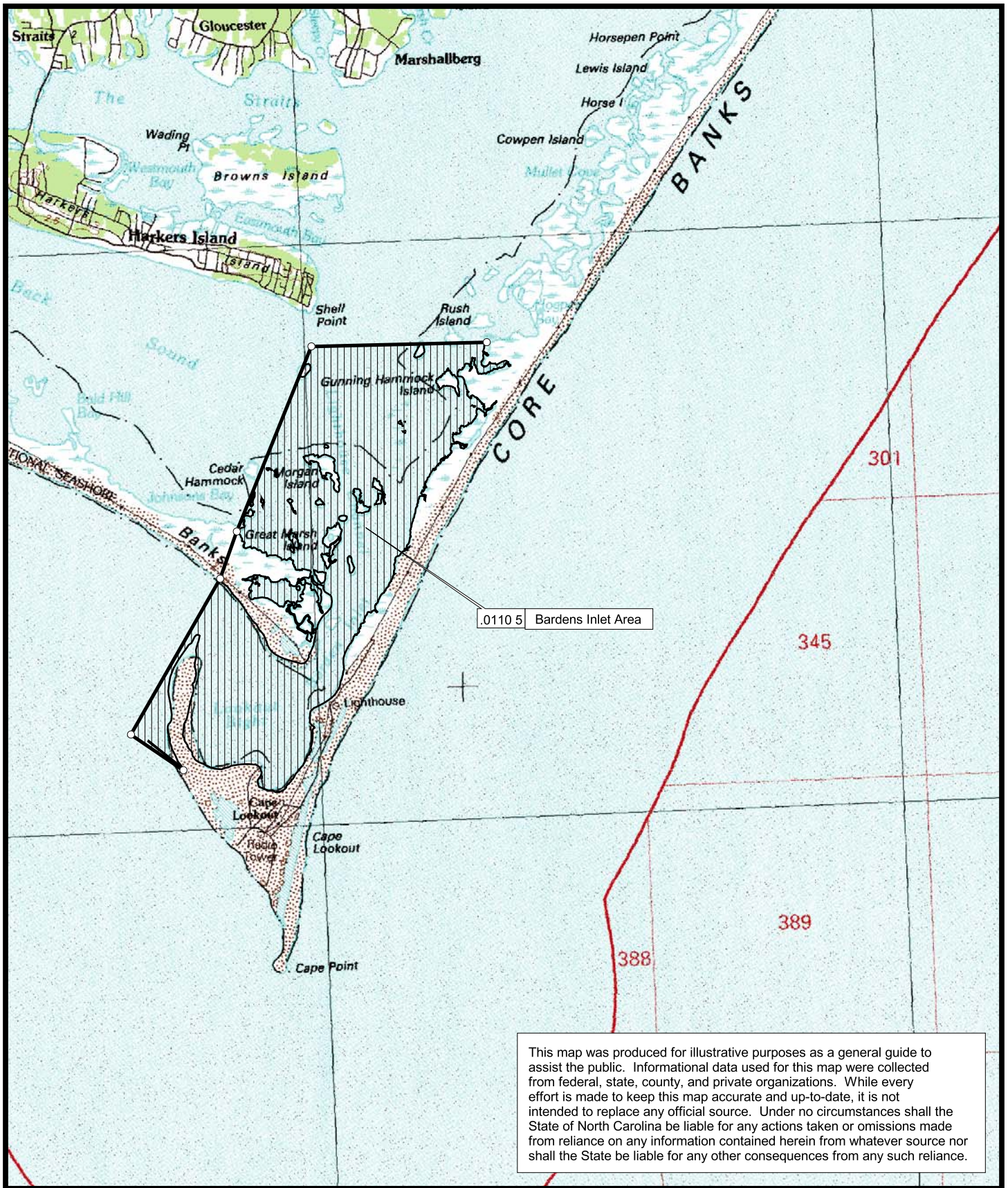
Crab Spawning Sanctuaries (15A NCAC 03R .0110)

Map 4

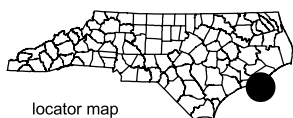


Map Datum: NAD83
Map Projection: NC State Plane
Map Date: October 2006

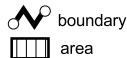




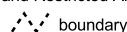
Background imagery are U.S. Geological Survey 1:100,000-scale planimetric maps.



Crab Spawning Sanctuaries



Military Danger Zones and Restricted Areas



Crab Spawning Sanctuaries (15A NCAC 03R .0110)

Map 5



Map Datum: NAD83
Map Projection: NC State Plane
Map Date: October 2006

