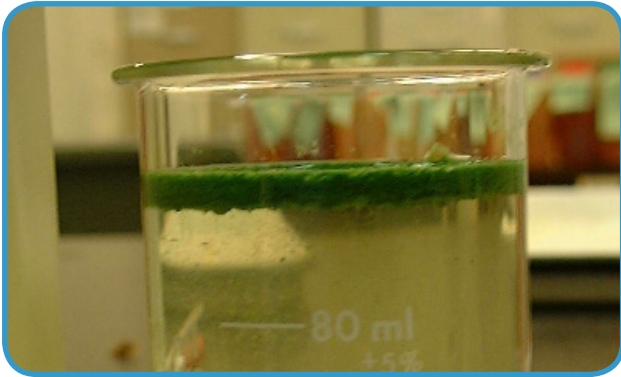


## IDENTIFICATION GUIDE:

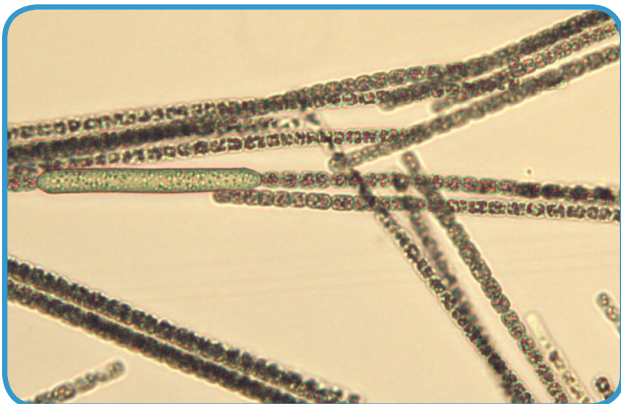
# Cyanobacteria fact sheet



Rafting forms surface scum



Cyanophyta (filamentous blue-greens)



*Aphanizomenon* filaments look like a chain of ovals.

### Algal Group:

Cyanophyta (filamentous blue-greens)

### Scientific Name:

*Aphanizomenon*

### Description:

*Aphanizomenon* is a filamentous blue-green alga. Individual filaments look like a chain of ovals. *Aphanizomenon flos-aquae* filaments tend to clump and form rafts. Clumps of this alga can form crescent shaped flakes that may be visible at the water's surface.

### Habitat:

*Aphanizomenon* is common in freshwater lakes and coastal estuarine rivers with low salinities. Blooms of this alga are most common during hot, dry weather.

### Significance:

*Aphanizomenon* is known to form "antifreeze green" surface scums in local estuarine rivers during drought conditions. While it has been reported that this alga can produce toxins in other parts of the United States, no toxic blooms of this alga have been reported in North Carolina.