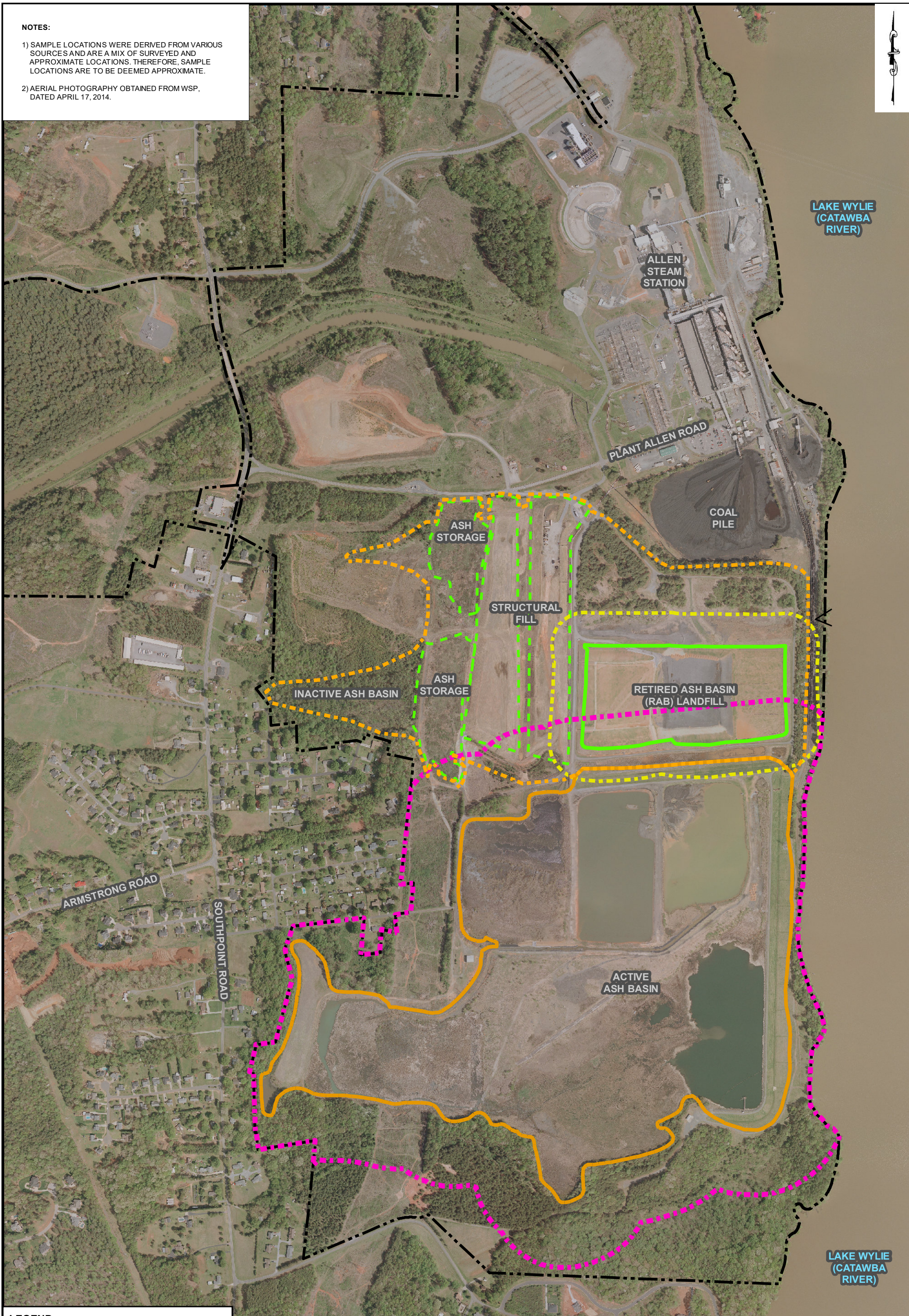


NOTES:

1) SAMPLE LOCATIONS WERE DERIVED FROM VARIOUS SOURCES AND ARE A MIX OF SURVEYED AND APPROXIMATE LOCATIONS. THEREFORE, SAMPLE LOCATIONS ARE TO BE DEEMED APPROXIMATE.

2) AERIAL PHOTOGRAPHY OBTAINED FROM WSP, DATED APRIL 17, 2014.



LEGEND

- ACTIVE ASH BASIN WASTE BOUNDARY
- INACTIVE ASH BASIN WASTE BOUNDARY
- ASH BASIN COMPLIANCE BOUNDARY
- LANDFILL BOUNDARY
- LANDFILL COMPLIANCE BOUNDARY
- ASH STORAGE AND STRUCTURAL FILL BOUNDARY
- PLANT SITE BOUNDARY



400 200 0 400 800
 GRAPHIC SCALE IN FEET

148 RIVER STREET, SUITE 220
 GREENVILLE, SOUTH CAROLINA 29601
 PHONE 864-421-9999
 www.synTerraCorp.com

DRAWN BY: A. FEIGL DATE: 01/10/2018
 PROJECT MANAGER: C. SUTTELL
 CHECKED BY: L. DRAGO

FIGURE 1
ASH BASIN WASTE AND COMPLIANCE BOUNDARIES
ALLEN STEAM STATION
DUKE ENERGY CAROLINAS, LLC
BELMONT, NORTH CAROLINA

P:\Duke Energy Progress\1026\00 GIS BASE DATA\Allen\Map_Docs\DEQ Monthly\Allen Boundaries_2018\JAN.mxd