

Appendix A

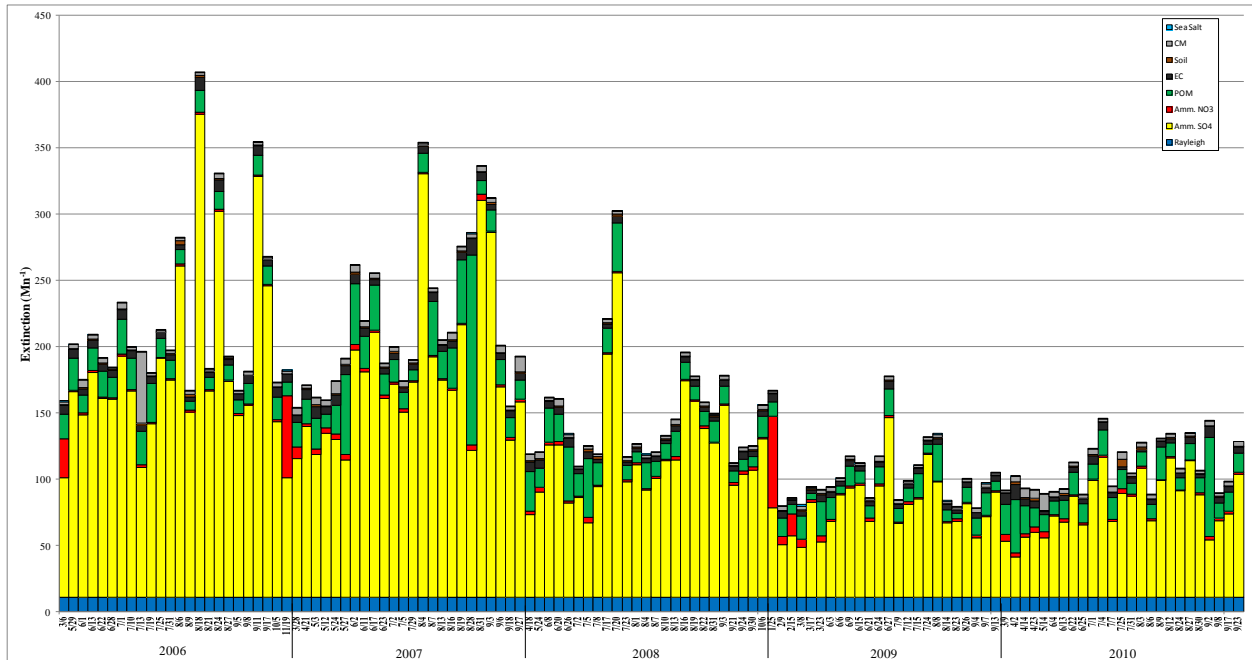
2006-2010 Reconstructed Extinction for North Carolina's Class I Areas

(This page intentionally left blank)

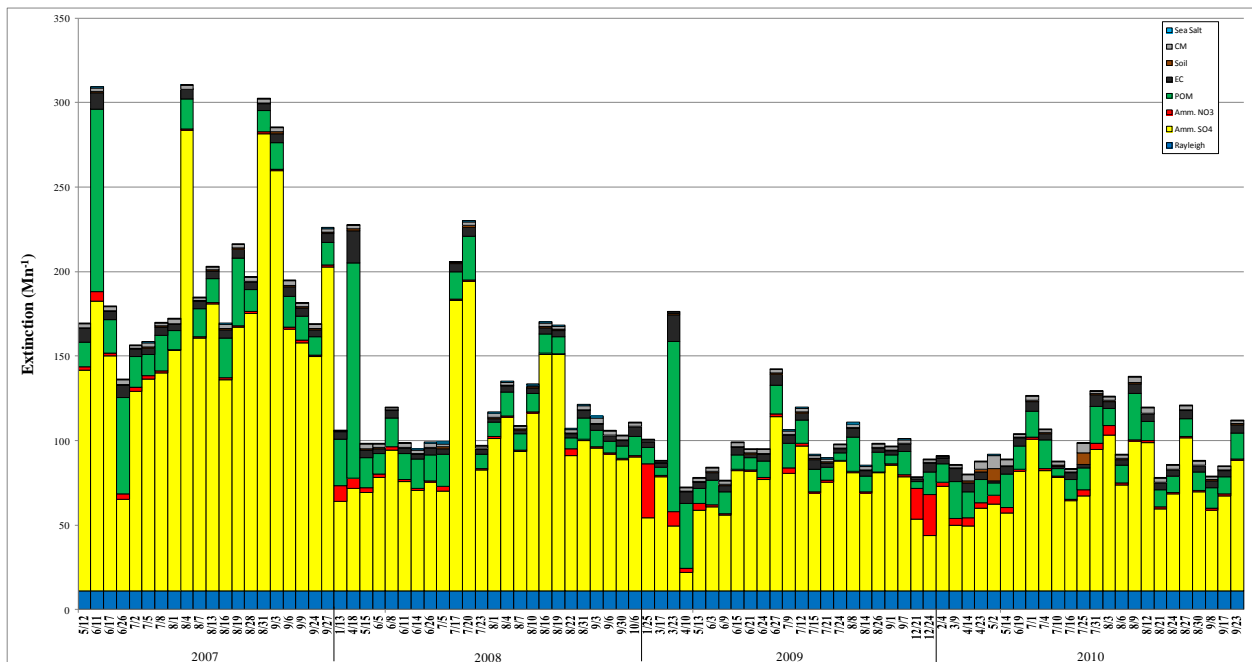
Table of Contents

The 2006 – 2010 reconstructed extinction, using the IMPROVE equation, for the 20% worst days at Great Smoky Mountains National Park, NC	3
The 2006 – 2010 reconstructed extinction, using the IMPROVE equation, for the 20% worst days at Linville Gorge, NC	3
The 2006 – 2010 reconstructed extinction, using the IMPROVE equation, for the 20% worst days at Shining Rock, NC	4
The 2006 – 2010 reconstructed extinction, using the IMPROVE equation, for the 20% worst days at Swanquarter, NC.....	4

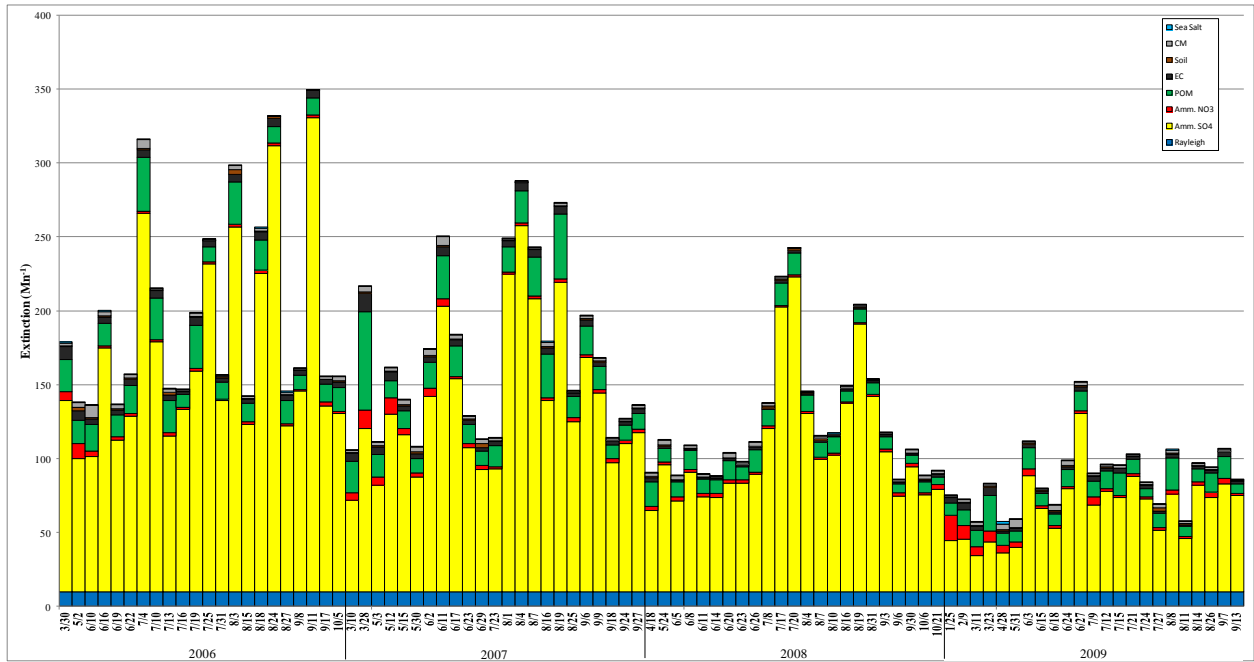
(This page intentionally left blank)



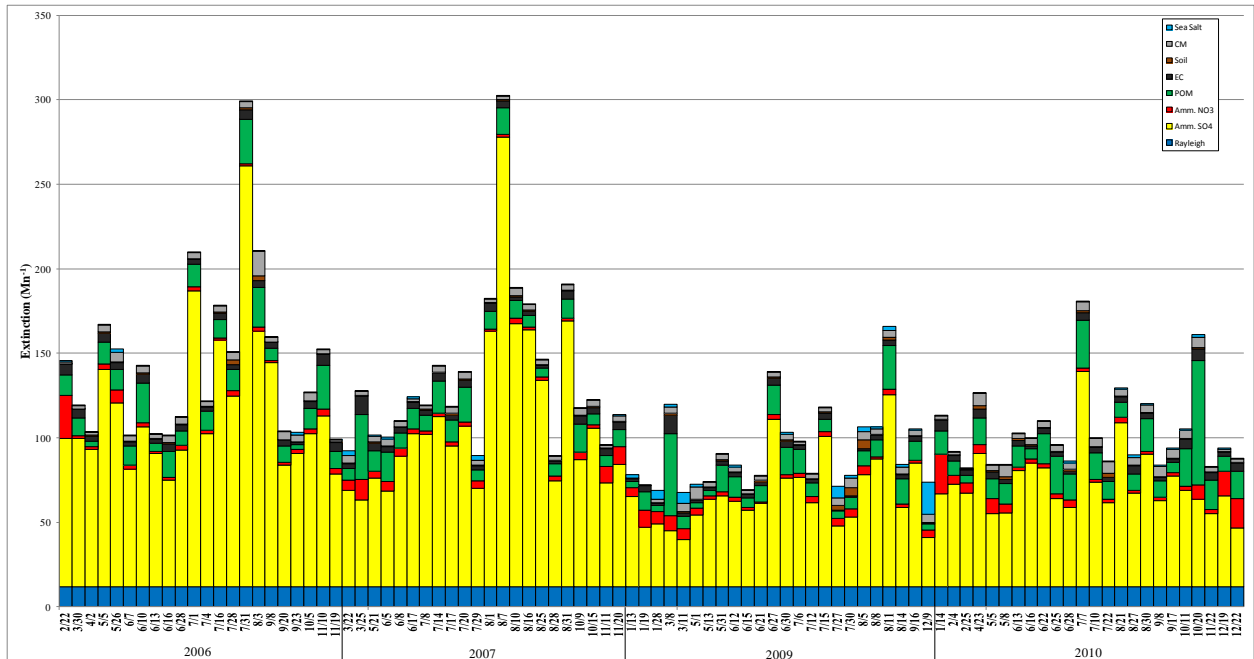
The 2006 – 2010 reconstructed extinction, using the IMPROVE equation, for the 20% worst days at Great Smoky Mountains National Park and Joyce Kilmer-Slickrock Wilderness Area, NC.



The 2006 – 2010 reconstructed extinction, using the IMPROVE equation, for the 20% worst days at Linville Gorge, NC.



The 2006 – 2010 reconstructed extinction, using the IMPROVE equation, for the 20% worst days at Shining Rock, NC.



The 2006 – 2010 reconstructed extinction, using the IMPROVE equation, for the 20% worst days at Swanquarter, NC.