

Conservation and Dam Removal benefitting the Cape Fear Shiner



Emily Wells, Fish and Wildlife Biologist USFWS
April 8, 2021

U.S. Fish and Wildlife Service



Our Mission:

Working with others to conserve, protect and enhance fish, wildlife and plants and their habitats for the continuing benefit of the American people.

Raleigh Ecological Services: What we do...

- Technical Assistance
- Project Review
- ESA Consultation
- Species Recovery
- Contaminant Investigations

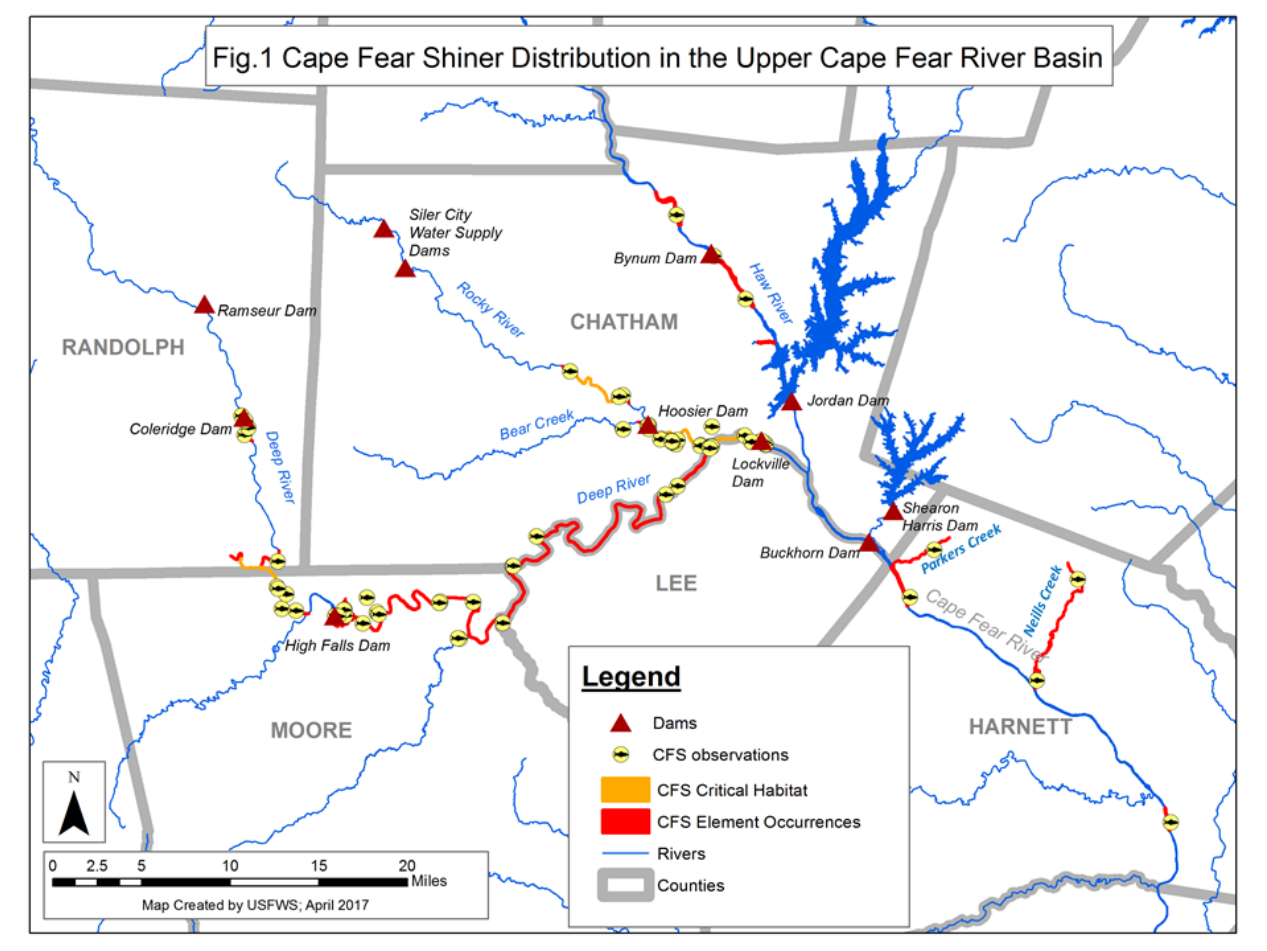


Distribution

- Endemic to Cape Fear River Basin Tributaries, NC, near the Fall Line
- Randolph, Lee, Moore, Chatham and Harnett Counties
- Rocky and Deep Rivers
- Haw River
- Cape Fear River



Dams within CFS Range as of 2017



CFS Ideal Habitat



Hoosier Impoundment



Hoosier Dam

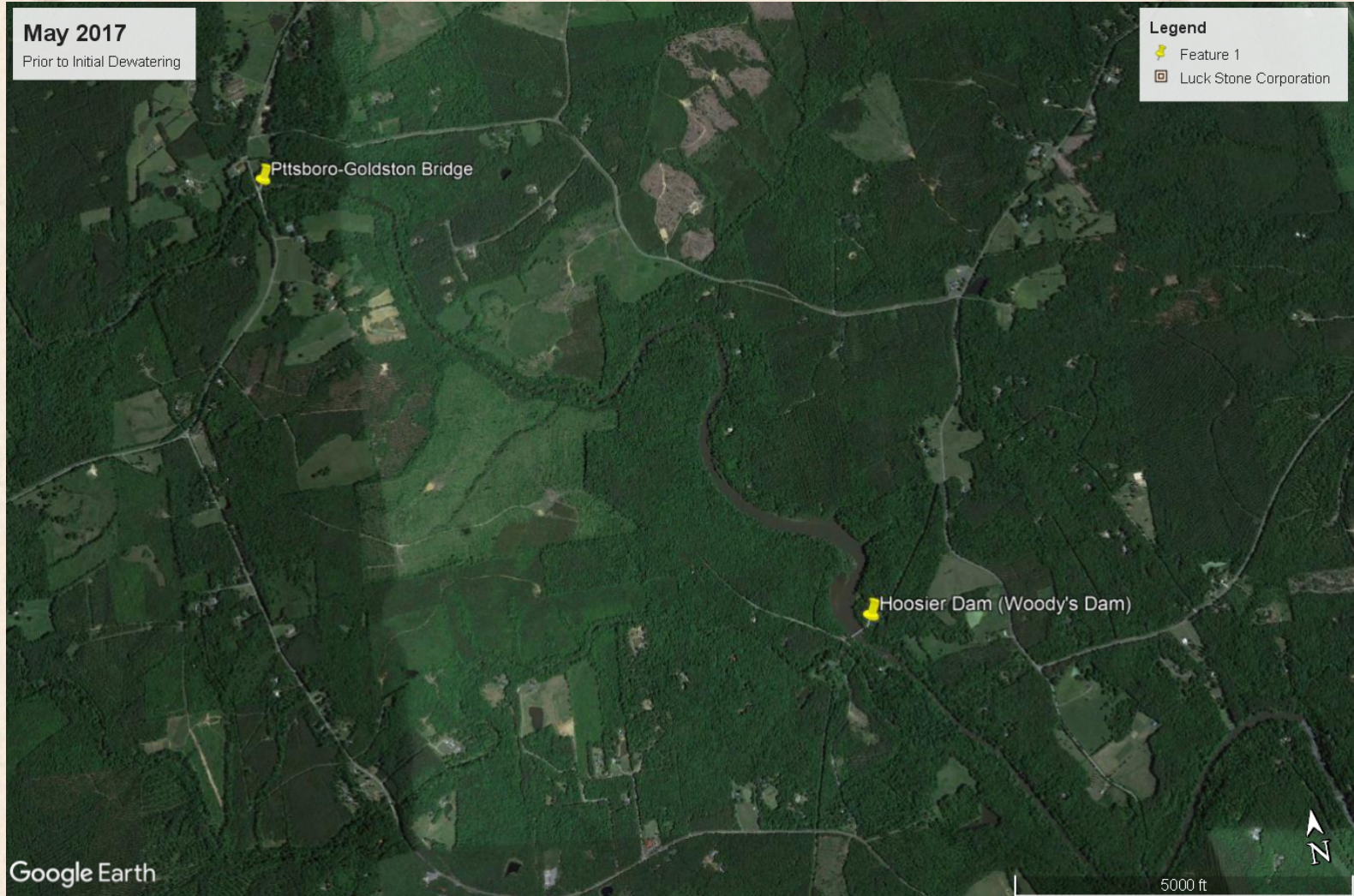


Cape Fear Shiner Critical Habitat on Rocky River

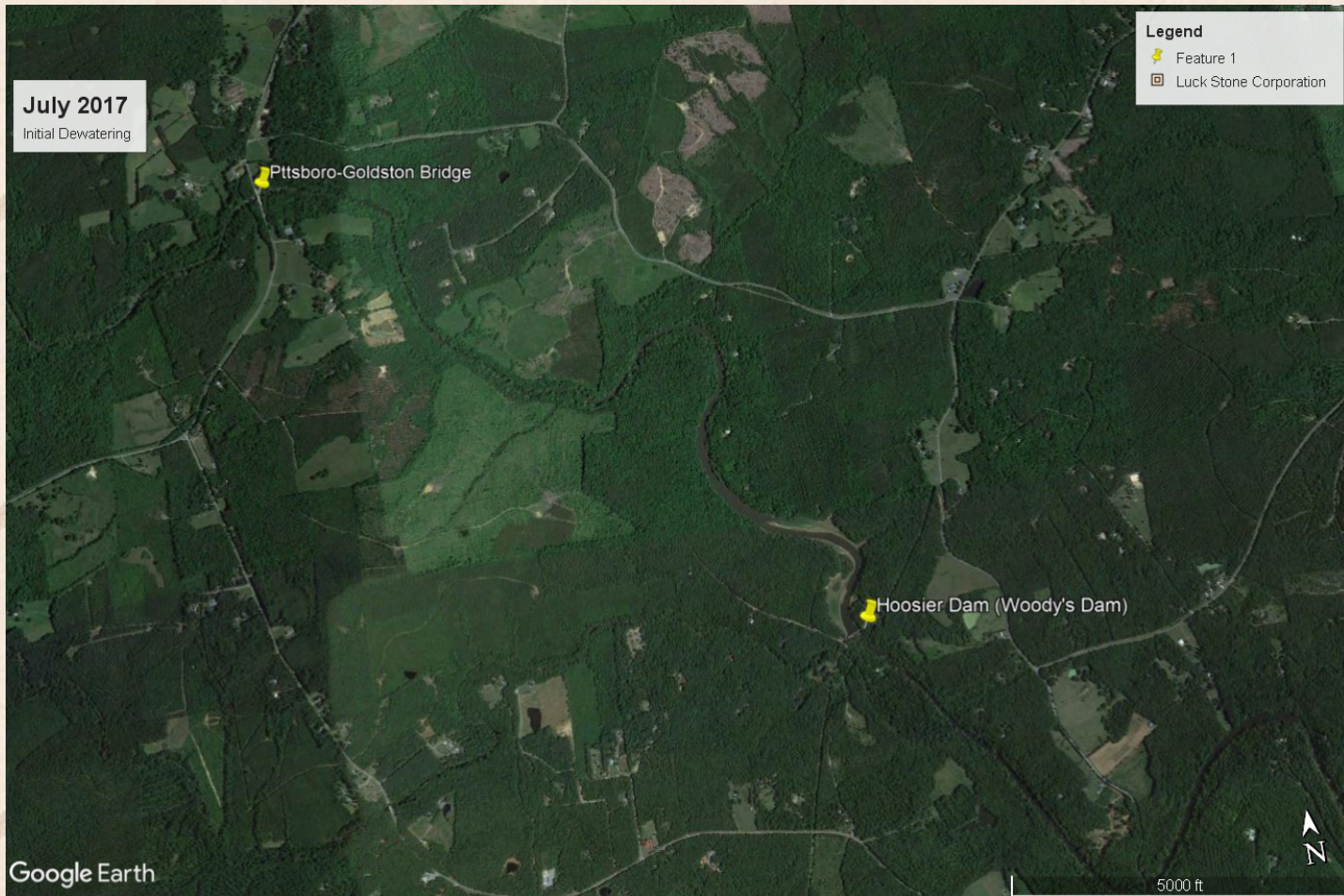


[Critical Habitat for Threatened & Endangered Species \[USFWS\] \(arcgis.com\)](#)

Hoosier Dam



De-watering process



Removal progress

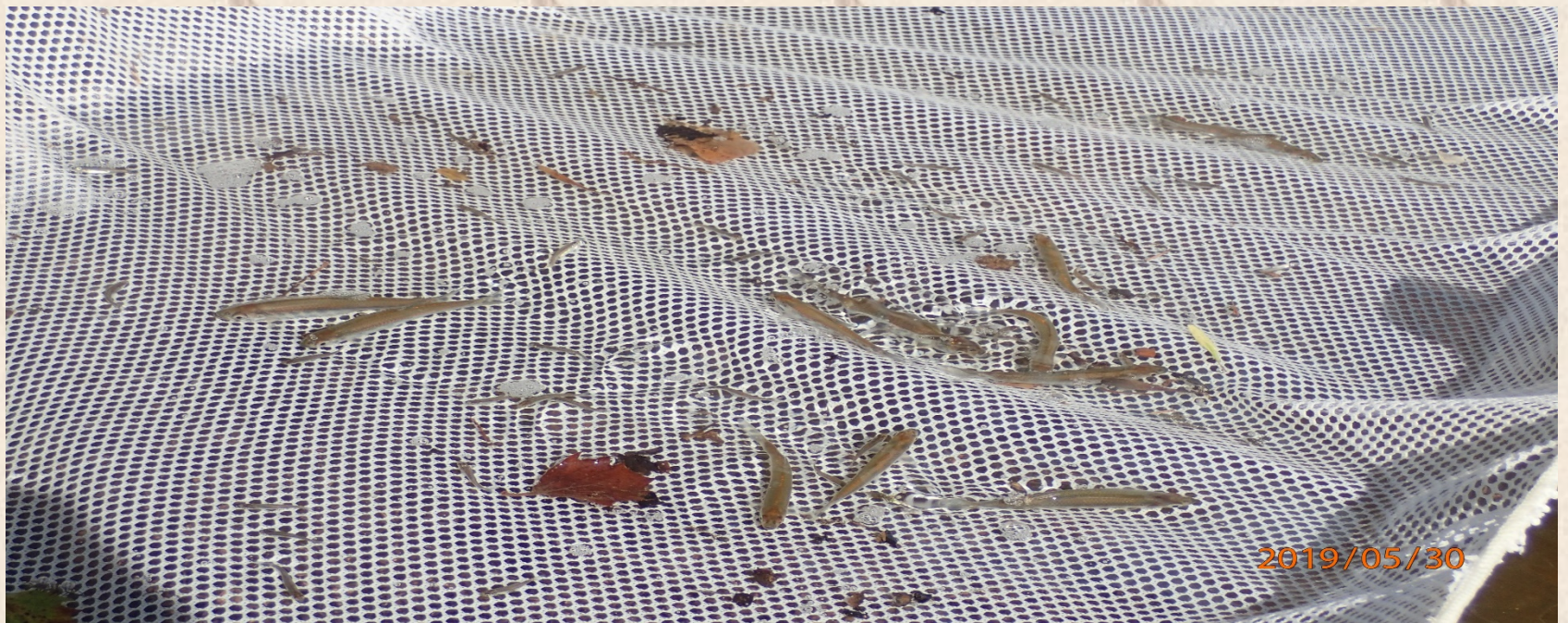


Removal Progress

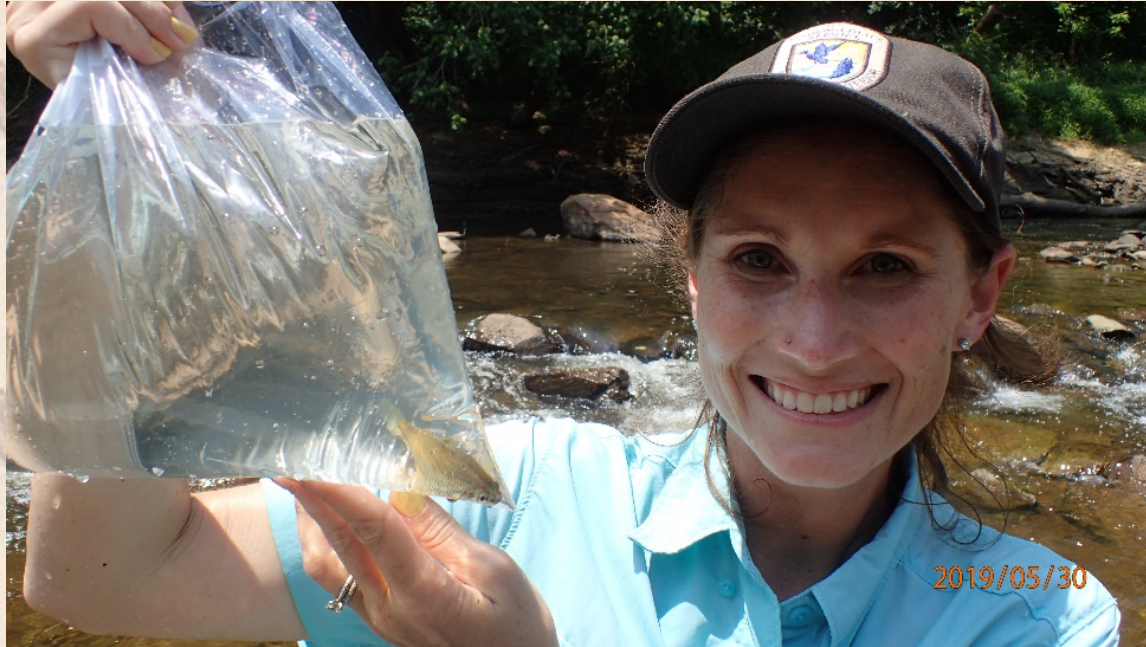


Monitoring

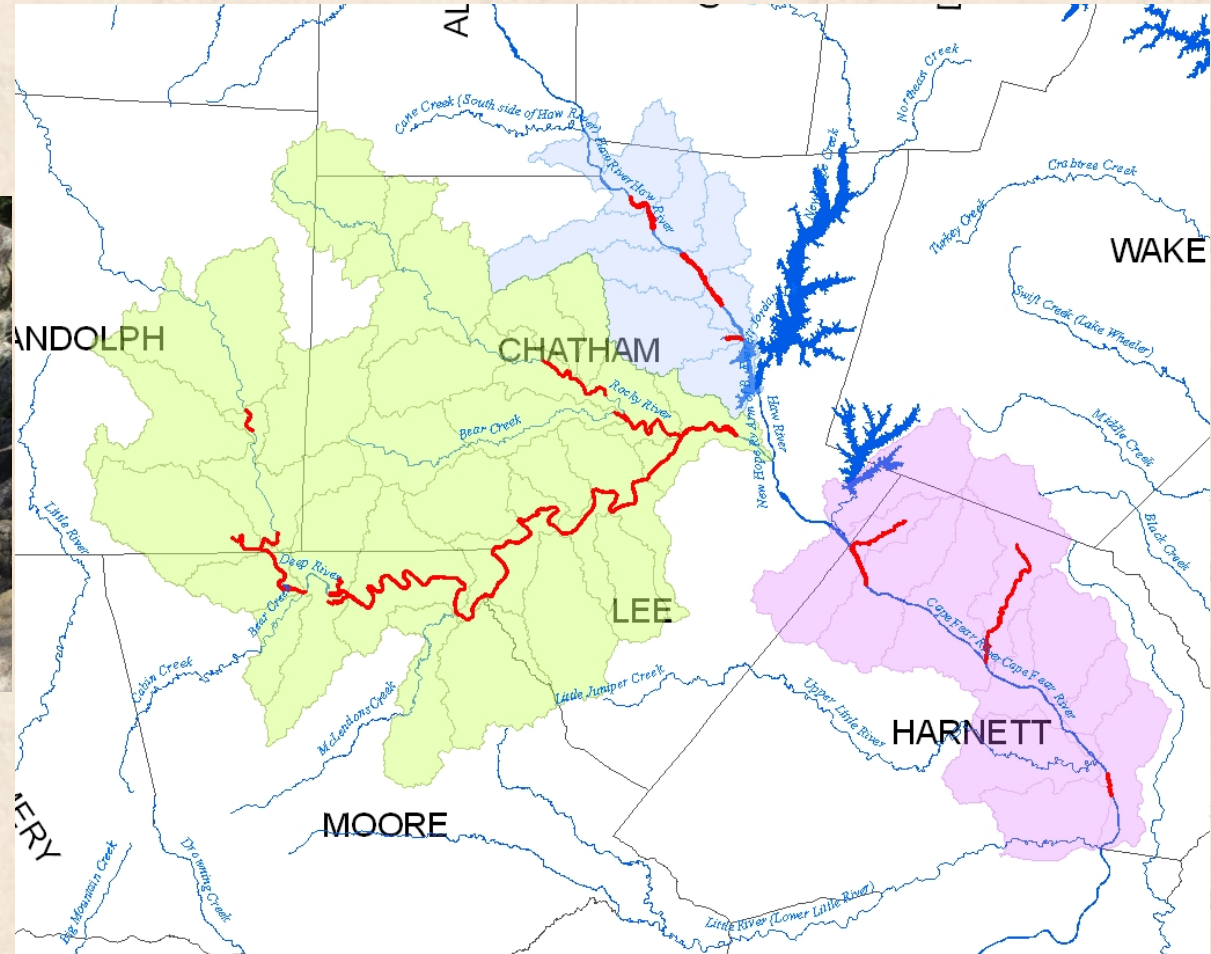
- Monitoring of the Cape Fear Shiner will take place for three years following removal of the dam to document project success.
- Four locations have been chosen, three of which have existing survey data on the Cape Fear Shiner that can be used for comparison.
- These include: (1) Upstream of the bridge crossing at Pittsboro-Goldston Road (upstream of impounded reach); (2) In the tailrace of the dam; and (3) At Chatham Church Road. A fourth area will be within the previously impounded reach.



Success!



Recovery Planning for CFS



Needed Conservation Actions

CATEGORIES OF ACTION:

- Education
- Write SHC Plan/Re-write Recovery Plan
- Augmentation/Reintroduction
- Dam Removals
- Instream Flows
- Habitat Restoration and Protection
- Surveys and Mapping
- Policy
- Water Quality
- Research

