

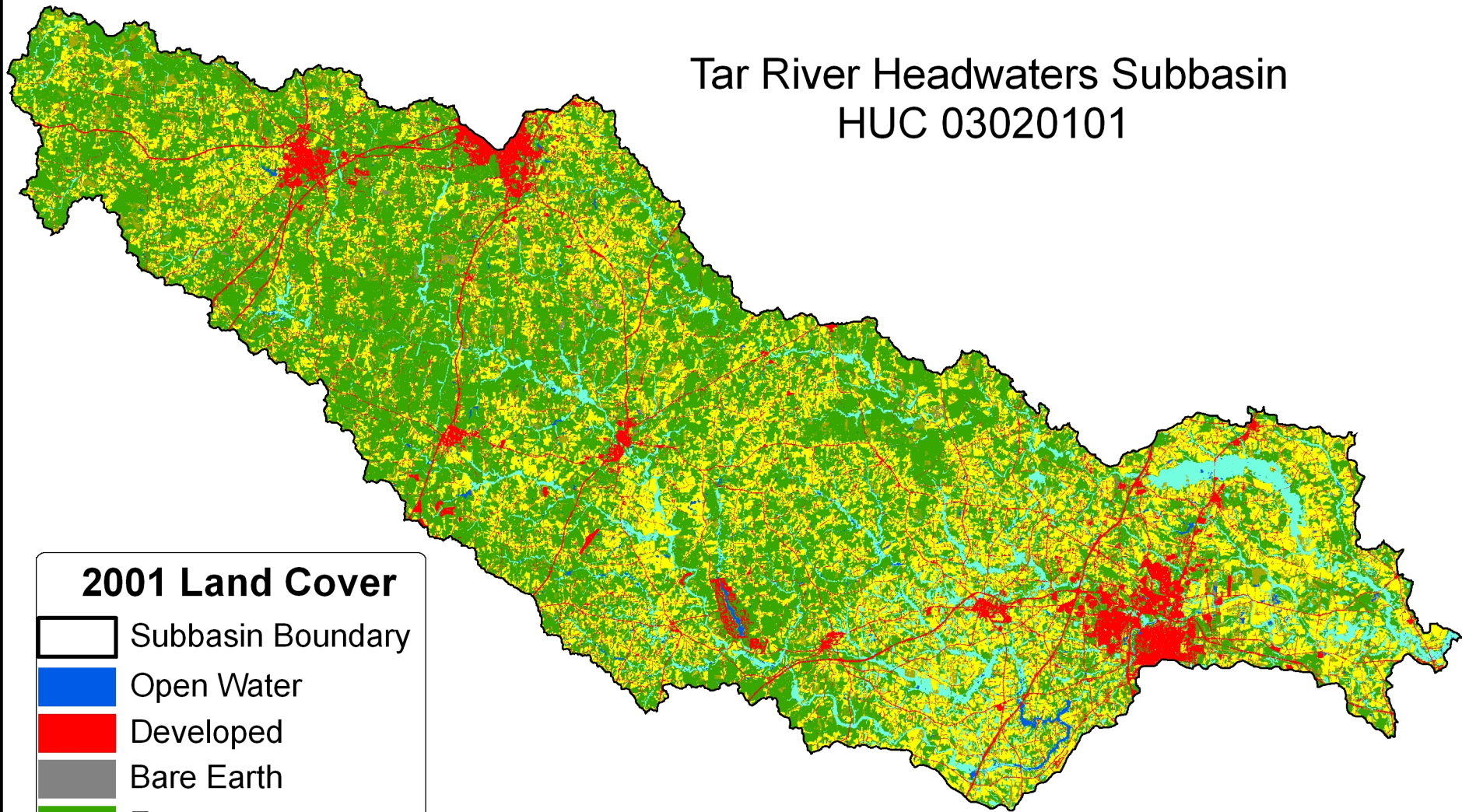
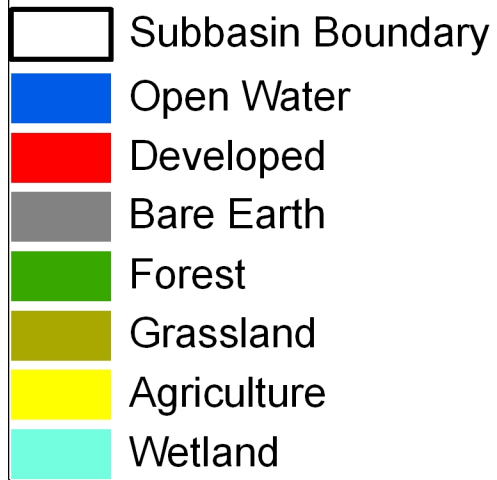
Appendix 1D

Maps

Tar River Headwaters Subbasin
HUC 03020101

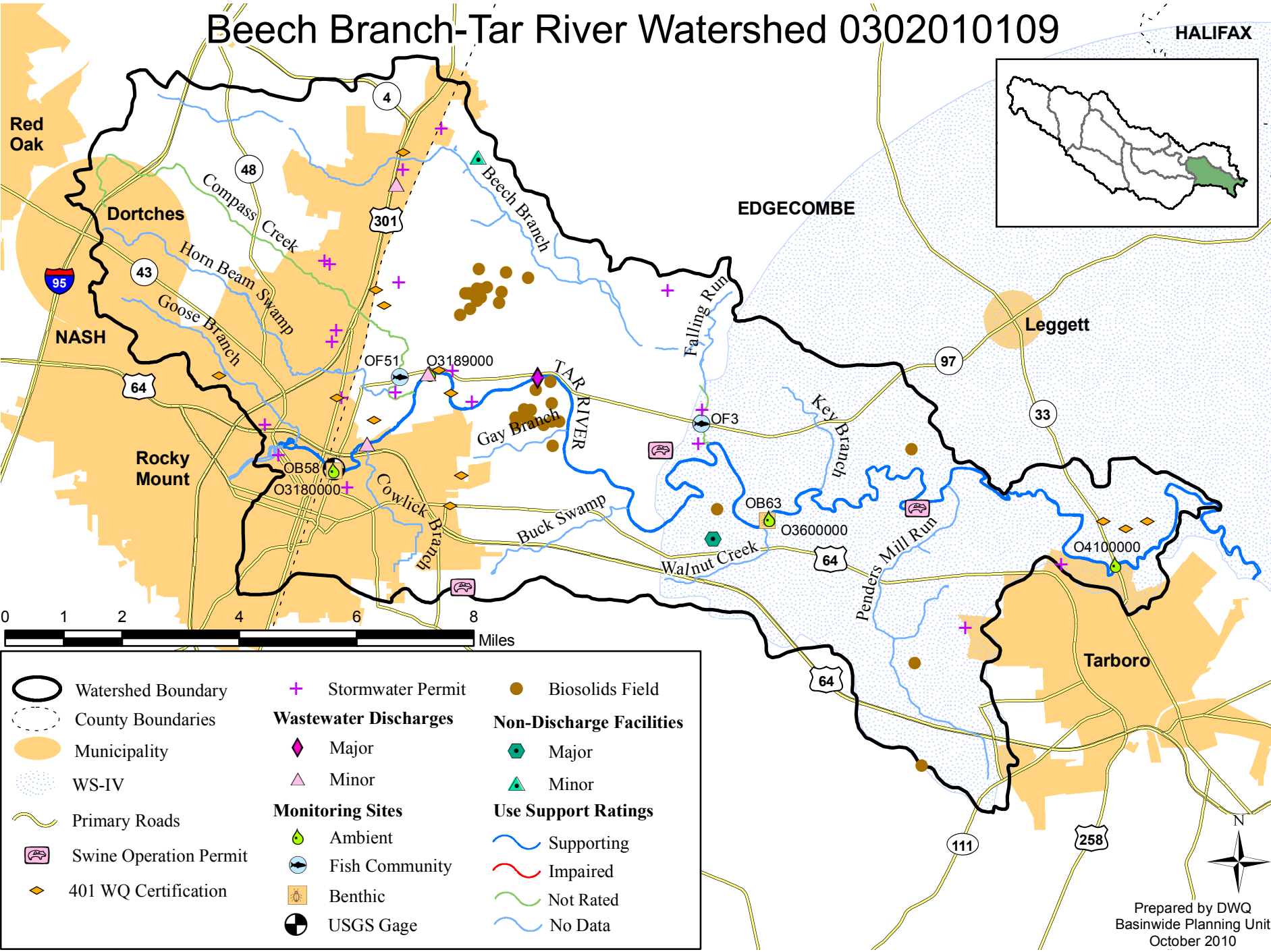
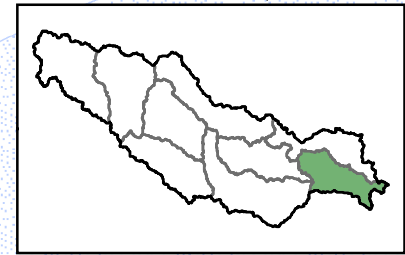
Tar River Headwaters Subbasin HUC 03020101

2001 Land Cover



Beech Branch-Tar River Watershed 0302010109

HALIFAX

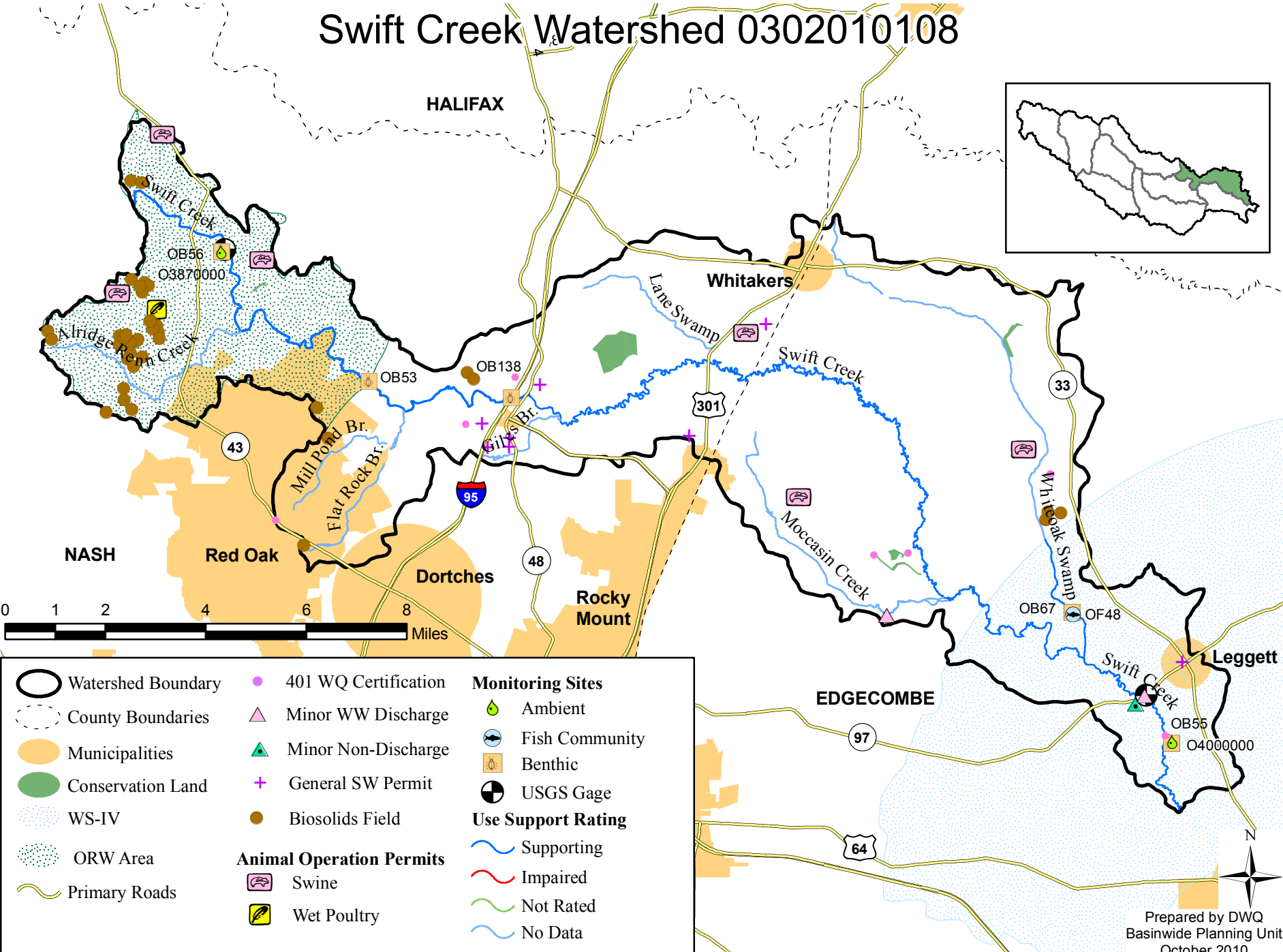
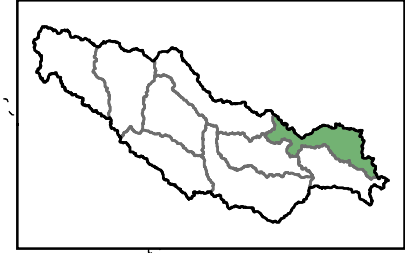


	Watershed Boundary		Stormwater Permit		Biosolids Field
	County Boundaries	Wastewater Discharges		Non-Discharge Facilities	
	Municipality		Major		Major
	WS-IV		Minor		Minor
	Primary Roads	Monitoring Sites		Use Support Ratings	
	Swine Operation Permit		Ambient		Supporting
	401 WQ Certification		Fish Community		Impaired
			Benthic		Not Rated
			USGS Gage		No Data



Prepared by DWQ
Basinwide Planning Unit
October 2010

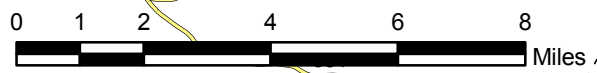
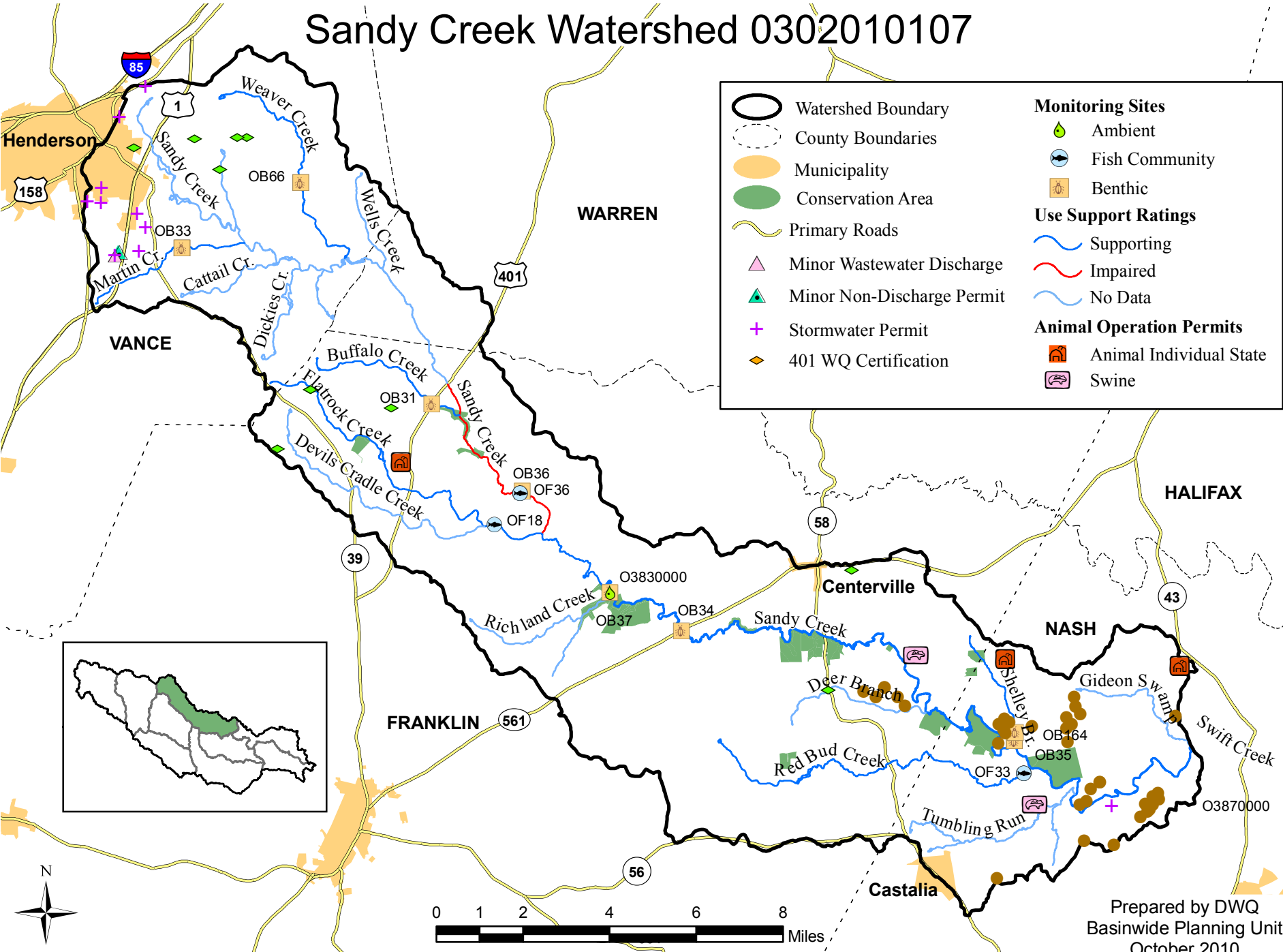
Swift Creek Watershed 0302010108



Watershed Boundary	401 WQ Certification	Monitoring Sites
County Boundaries	Minor WW Discharge	Ambient
Municipalities	Minor Non-Discharge	Fish Community
Conservation Land	General SW Permit	Benthic
WS-IV	Biosolids Field	USGS Gage
ORW Area	Animal Operation Permits	Use Support Rating
Primary Roads	Swine	Supporting
	Wet Poultry	Impaired
		Not Rated
		No Data

Sandy Creek Watershed 0302010107

	Watershed Boundary		Monitoring Sites
	County Boundaries		Ambient
	Municipality		Fish Community
	Conservation Area		Benthic
	Primary Roads		Use Support Ratings
	Minor Wastewater Discharge		Supporting
	Minor Non-Discharge Permit		Impaired
	Stormwater Permit		No Data
	401 WQ Certification		Animal Operation Permits
			Animal Individual State
			Swine

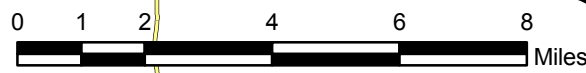
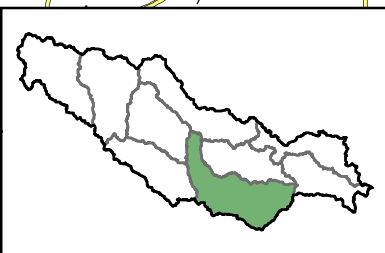
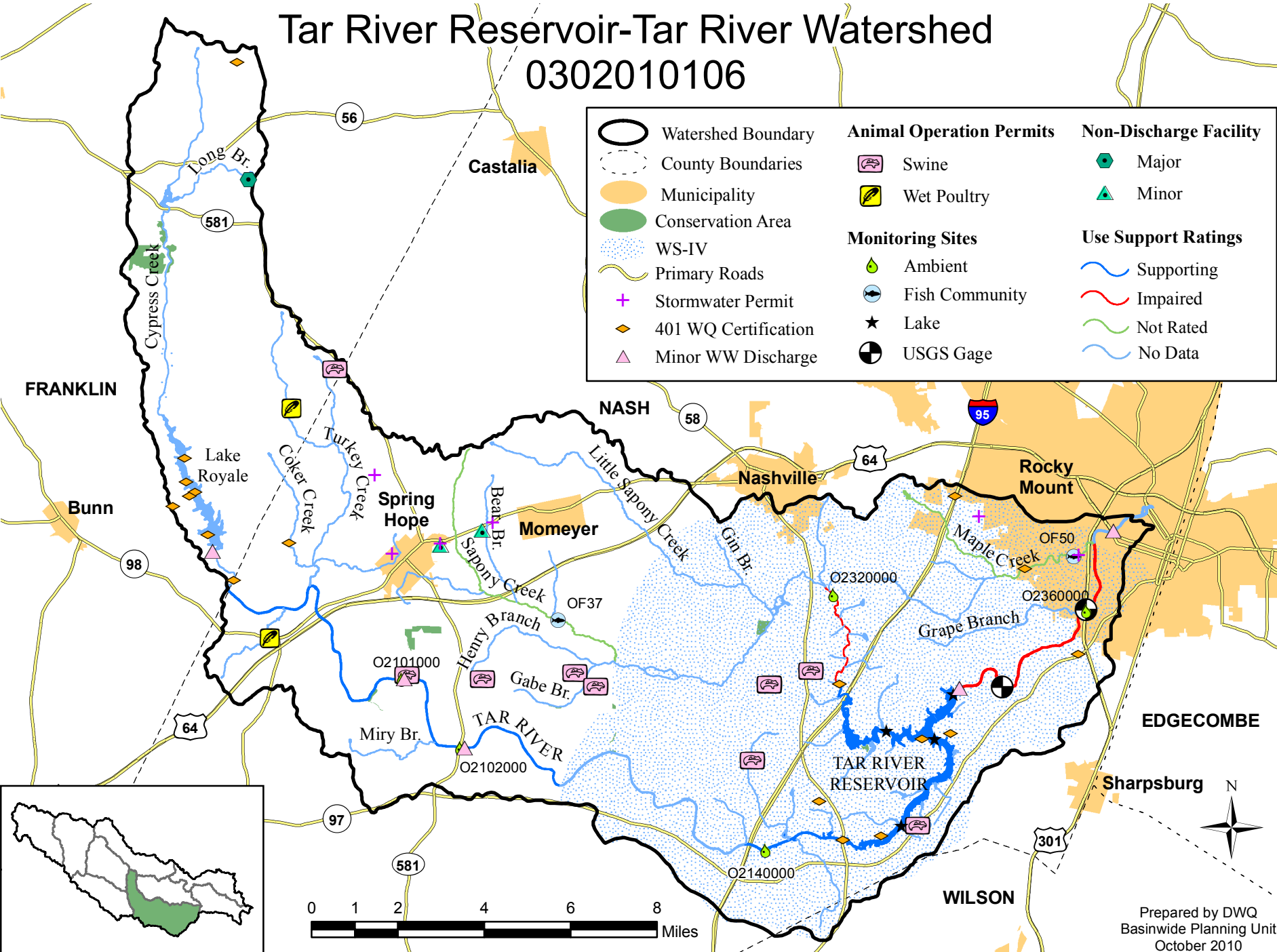


Prepared by DWQ
Basinwide Planning Unit
October 2010

Tar River Reservoir-Tar River Watershed

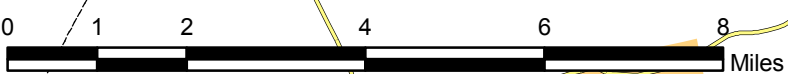
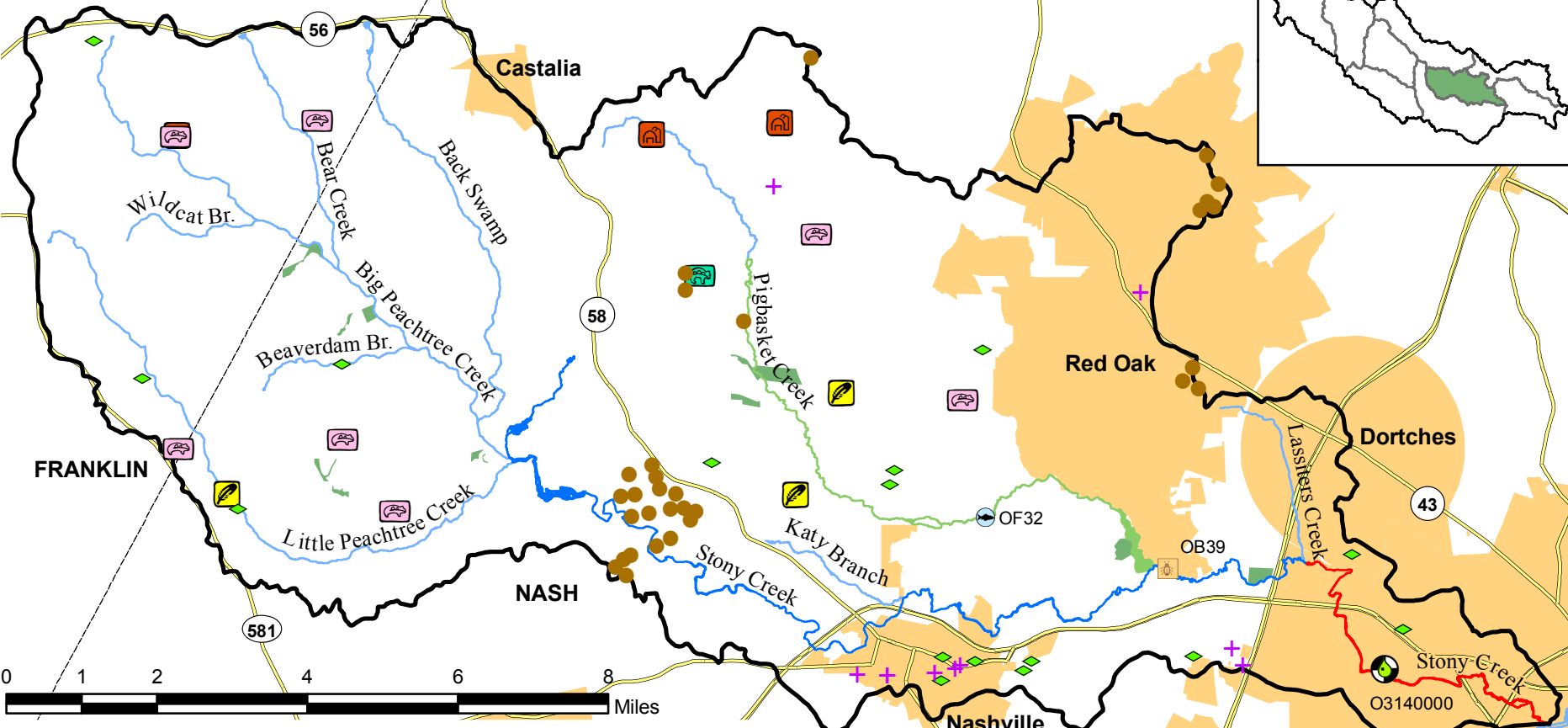
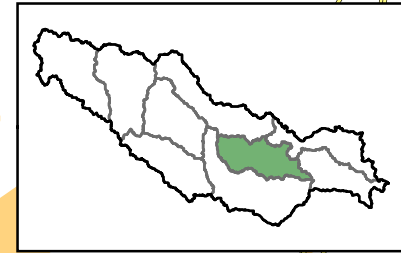
0302010106

	Watershed Boundary	Animal Operation Permits	Non-Discharge Facility
	County Boundaries		
	Municipality		
	Conservation Area	Monitoring Sites	Use Support Ratings
	WS-IV		
	Primary Roads		
	Stormwater Permit		
	401 WQ Certification		
	Minor WW Discharge		



Prepared by DWQ
Basinwide Planning Unit
October 2010

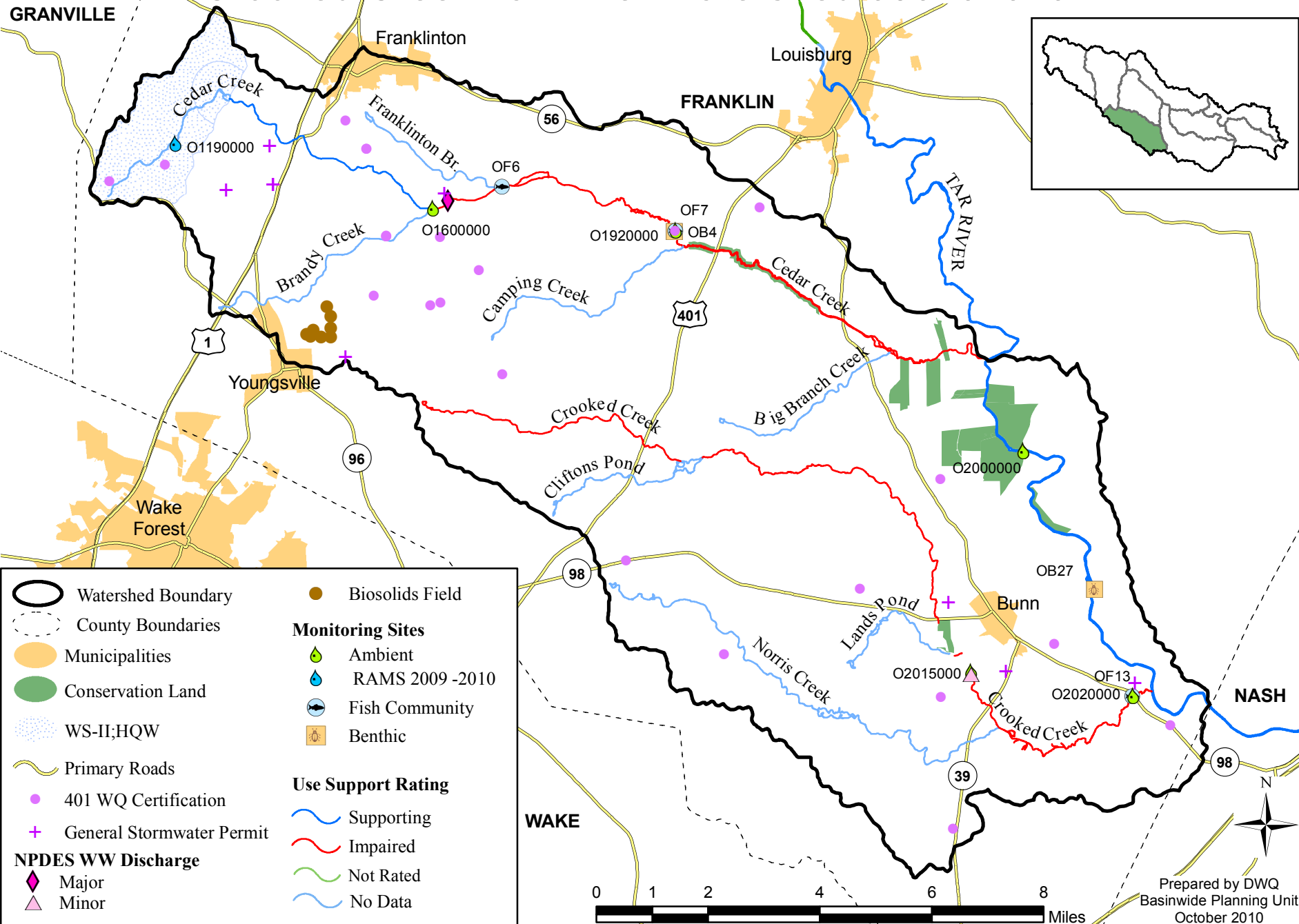
Stony Creek Watershed 0302010105



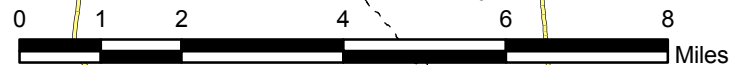
Watershed Boundary	Conservation Land	401 WQ Certification
County Boundaries	Primary Roads	Stormwater Permit
Municipalities	Biosolids Field	Animal Operation Permits
Use Support Rating	Monitoring Sites	Animal Individual
Supporting	Ambient	Wet Poultry
Impaired	Fish Community	Swine
Not Rated	Benthic	Cattle
No Data	USGS Gage	



Crooked Creek-Tar River Watershed 0302010104

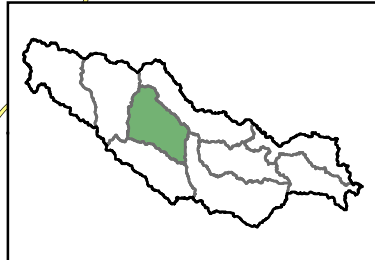
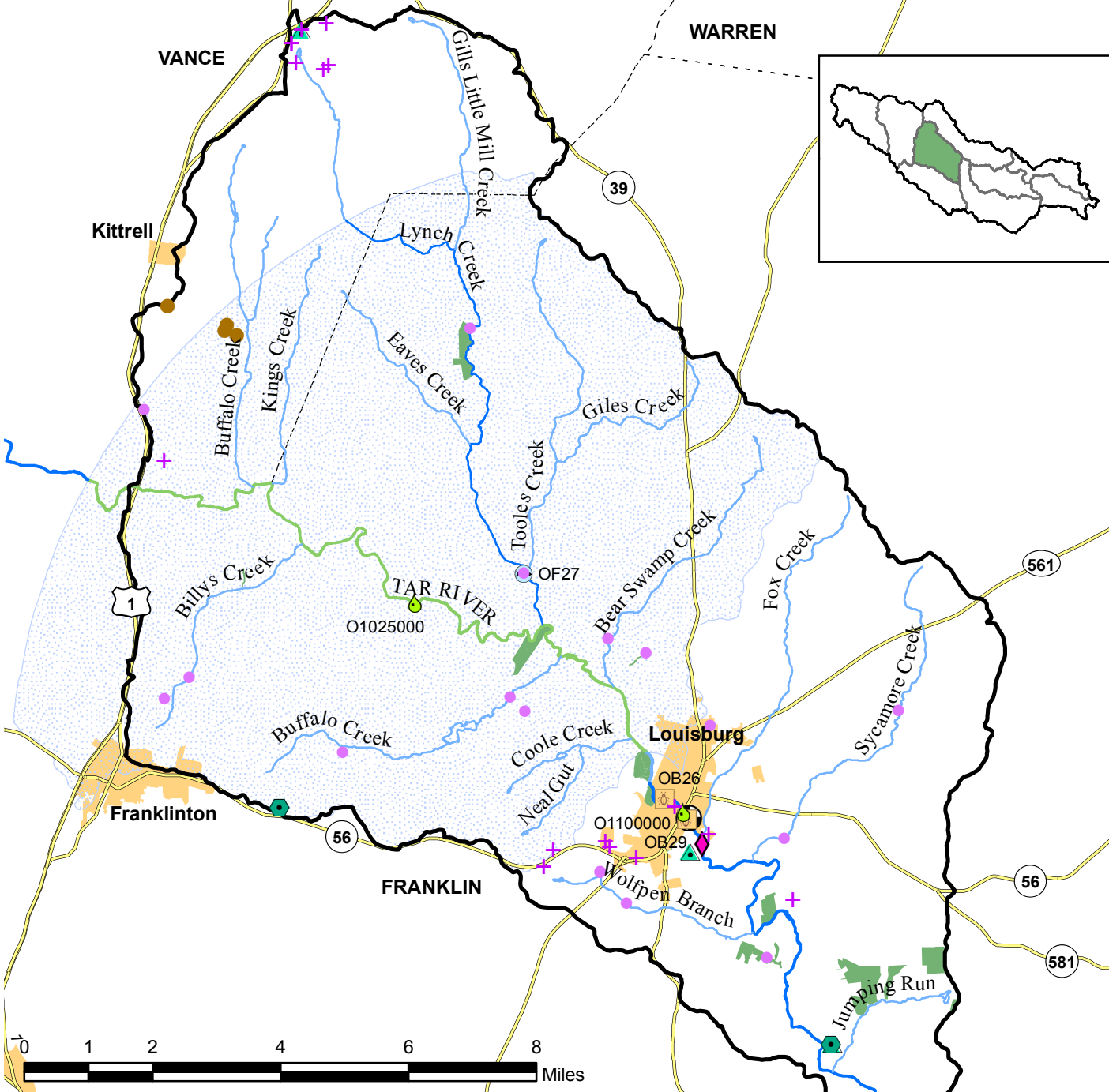


	Watershed Boundary		Biosolids Field
	County Boundaries	Monitoring Sites	
	Municipalities		Ambient
	Conservation Land		RAMS 2009 -2010
	WS-II;HQW		Fish Community
	Primary Roads		Benthic
	401 WQ Certification	Use Support Rating	
	General Stormwater Permit		Supporting
NPDES WW Discharge			Impaired
	Major		Not Rated
	Minor		No Data



Prepared by DWQ
Basinwide Planning Unit
October 2010

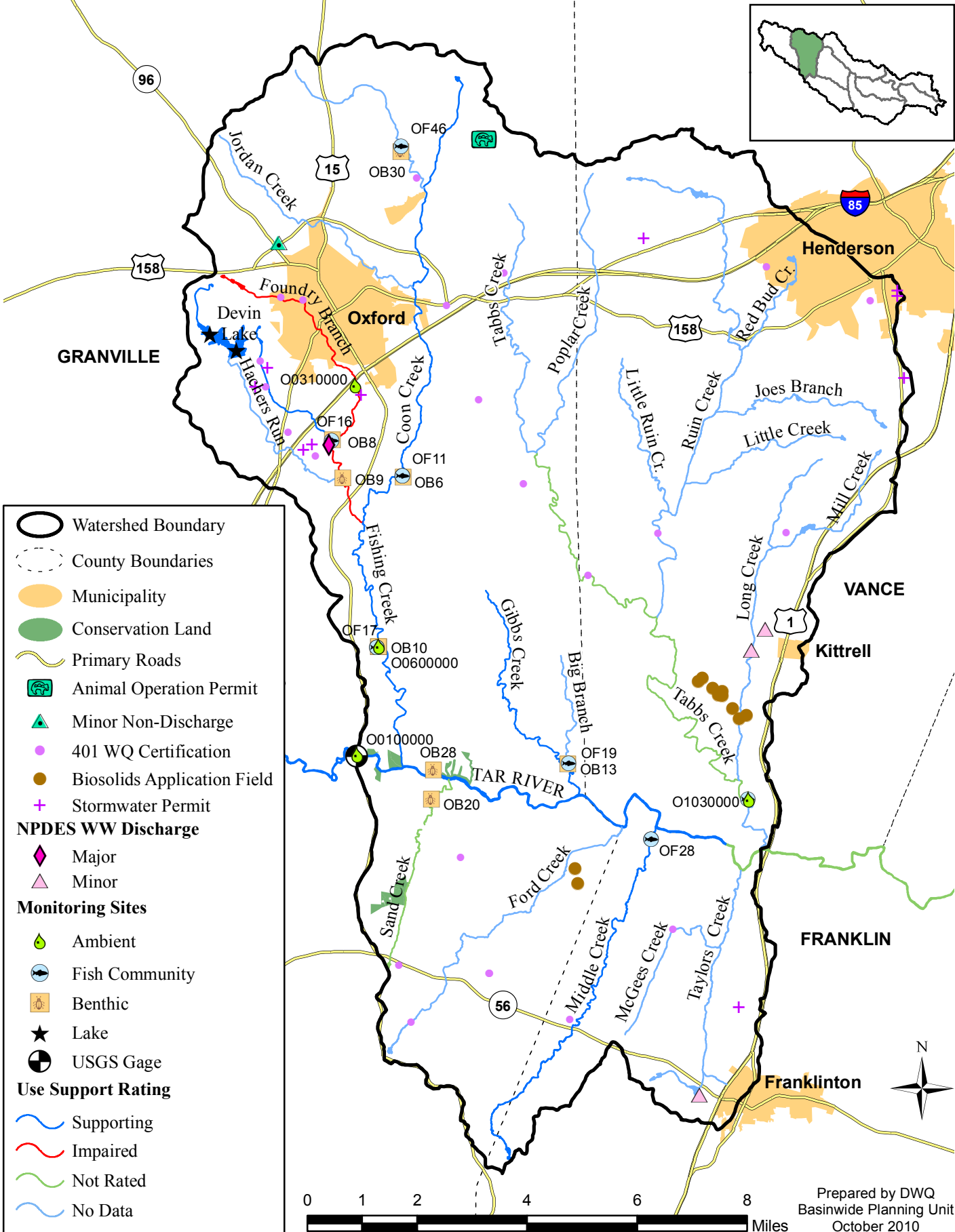
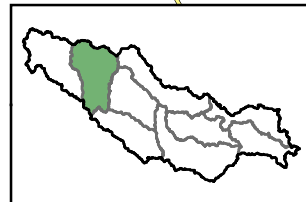
Lynch Creek-Tar River Watershed 0302010103



	Watershed Boundary		Biosolids Field	Non-Discharge Facility	
	County Boundaries		Stormwater Permit		Major
	Municipality		401 WQ Certification		Minor
	Conservation Land	Monitoring Sites		Ambient	Use Support Rating
	WS-IV		Fish Community		Supporting
	Primary Roads		Benthic		Impaired
	Major WW Discharge		USGS Gage		Not Rated
					No Data

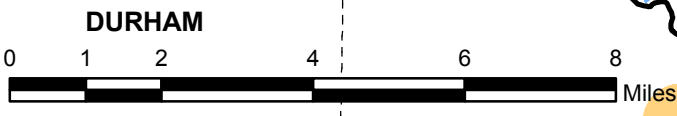
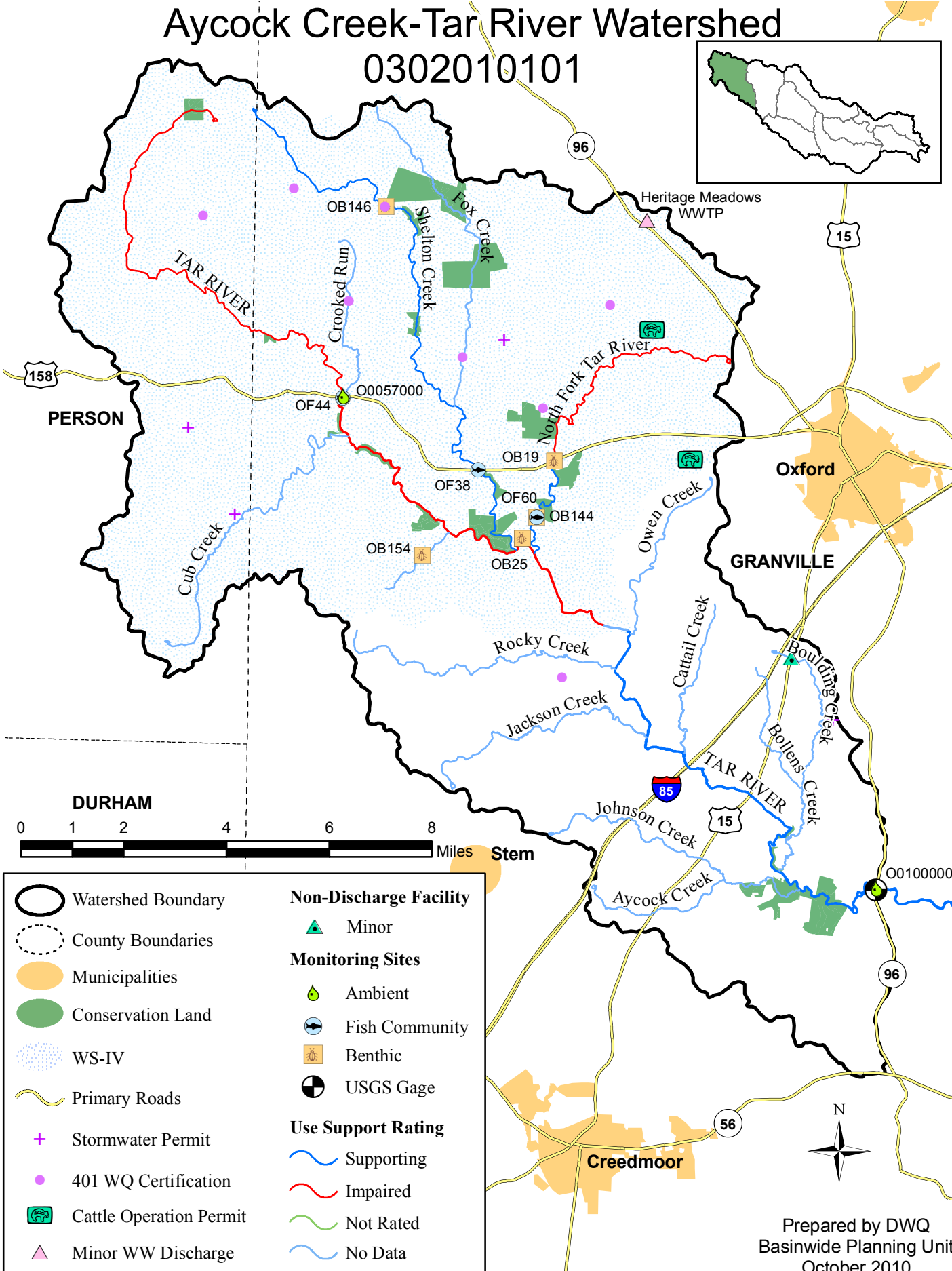
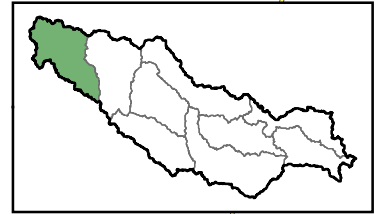


Tabbs Creek-Tar River 0302010102



Aycock Creek-Tar River Watershed

0302010101



	Watershed Boundary		Non-Discharge Facility Minor
	County Boundaries		Monitoring Sites Ambient
	Municipalities		Fish Community
	Conservation Land		Benthic
	WS-IV		USGS Gage
	Primary Roads	Use Support Rating	Supporting
	Stormwater Permit		Impaired
	401 WQ Certification		Not Rated
	Cattle Operation Permit		No Data
	Minor WW Discharge		



Prepared by DWQ
Basinwide Planning Unit
October 2010