

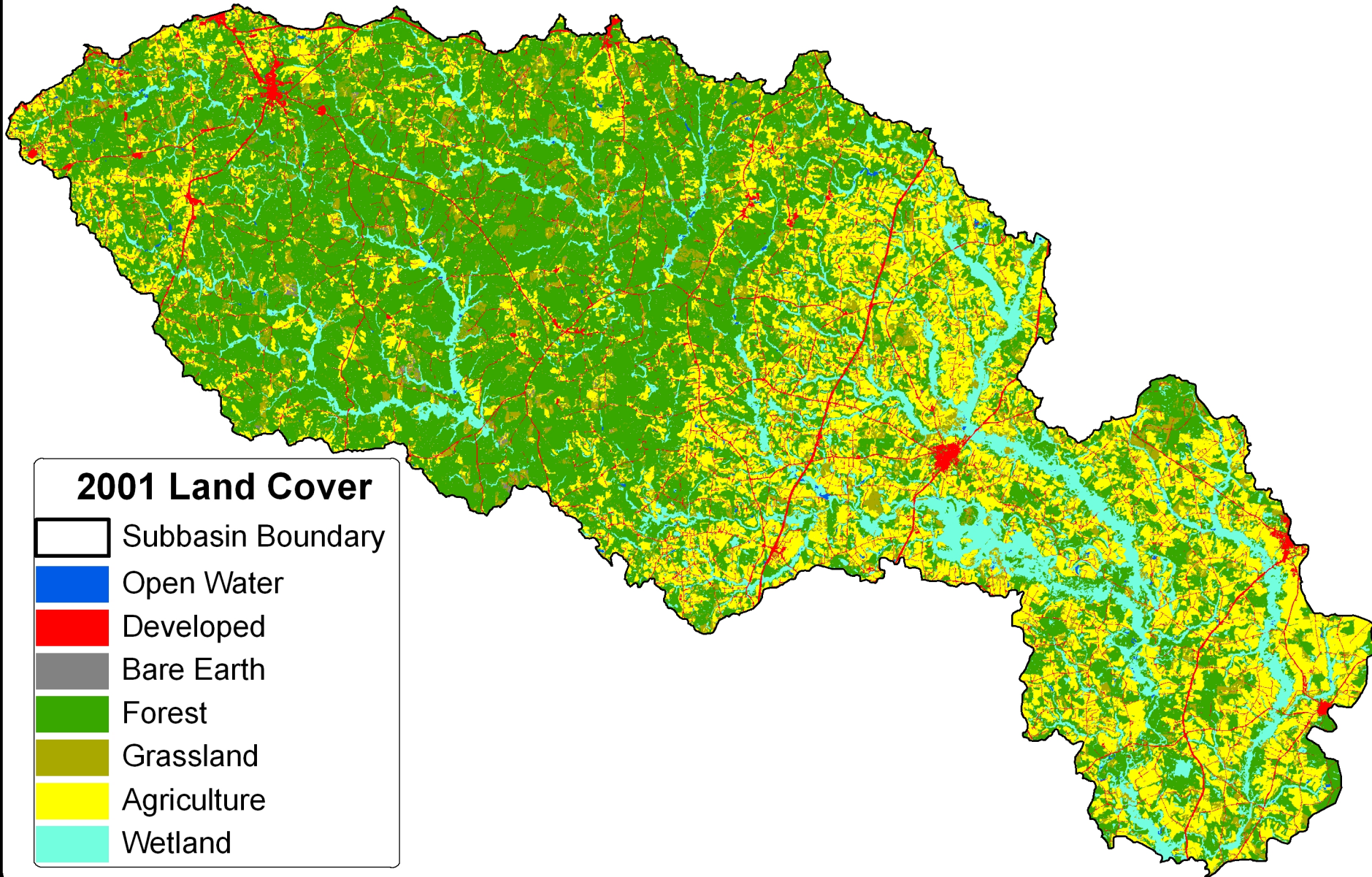
Appendix 2D

Maps

Fishing Creek Subbasin
HUC 03020102

Fishing Creek Subbasin

HUC 03020102



Lower Fishing Creek 0302010206

Legend

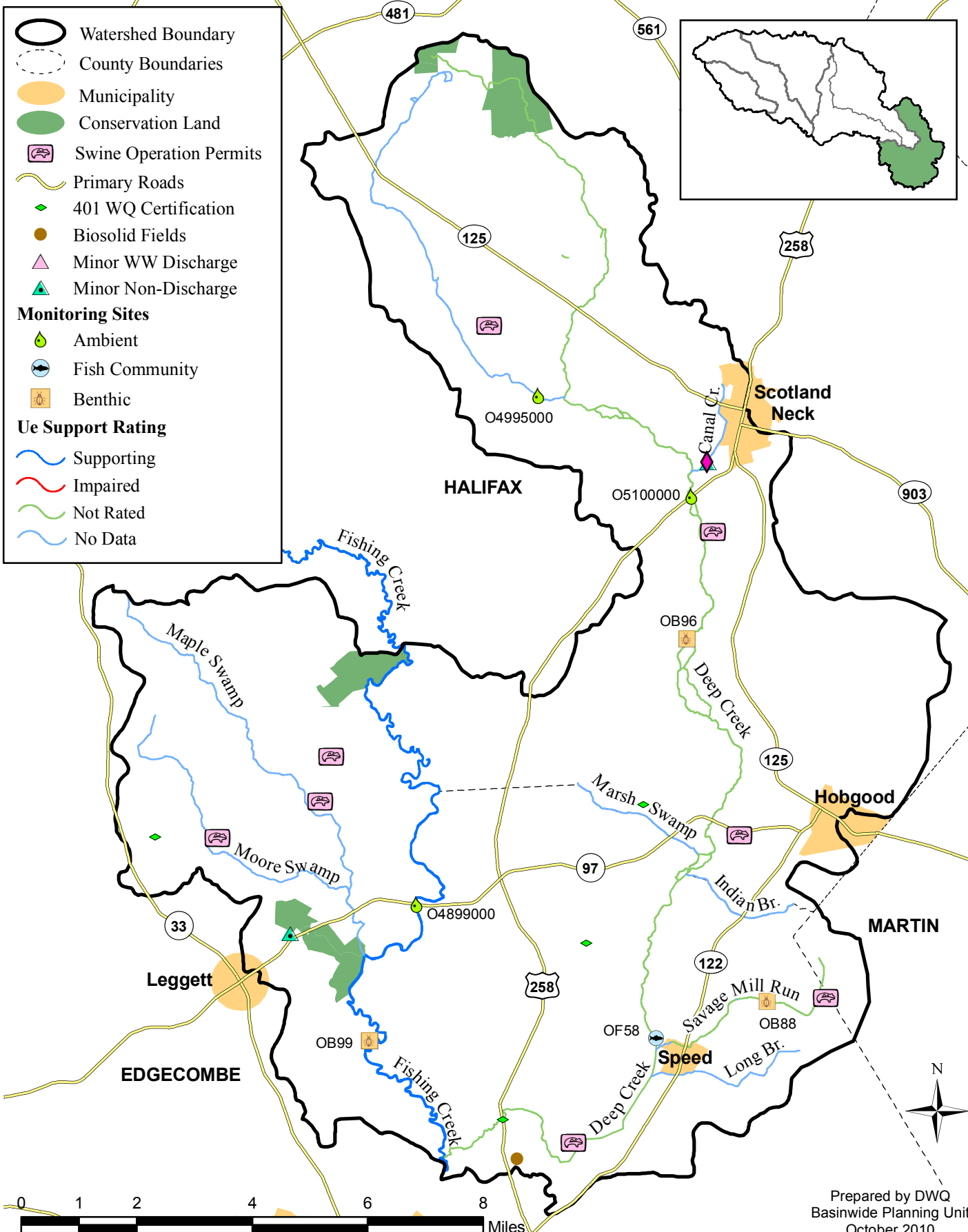
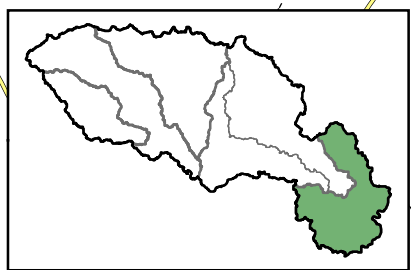
- Watershed Boundary
- County Boundaries
- Municipality
- Conservation Land
- Swine Operation Permits
- Primary Roads
- 401 WQ Certification
- Biosolid Fields
- Minor WW Discharge
- Minor Non-Discharge

Monitoring Sites

- Ambient
- Fish Community
- Benthic

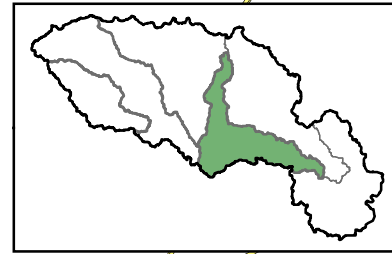
Ue Support Rating

- Supporting
- Impaired
- Not Rated
- No Data

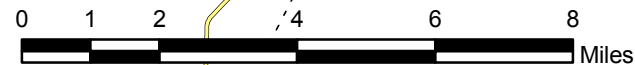
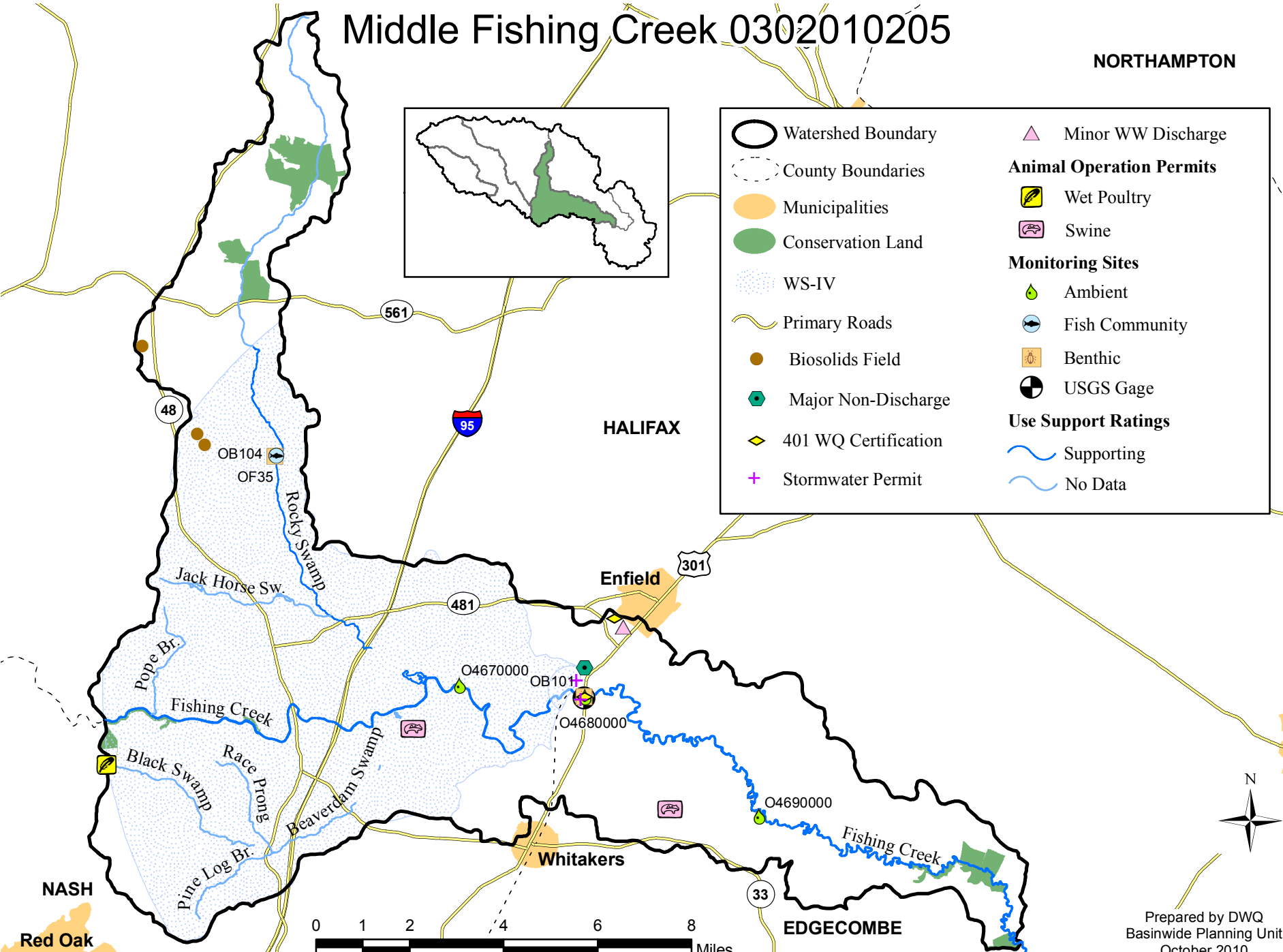


Middle Fishing Creek 0302010205

NORTHAMPTON



	Watershed Boundary		Minor WW Discharge
	County Boundaries	Animal Operation Permits	
	Municipalities		Wet Poultry
	Conservation Land		Swine
	WS-IV	Monitoring Sites	
	Primary Roads		Ambient
	Biosolids Field		Fish Community
	Major Non-Discharge		Benthic
	401 WQ Certification		USGS Gage
	Stormwater Permit	Use Support Ratings	
			Supporting
			No Data



NASH

Red Oak

HALIFAX

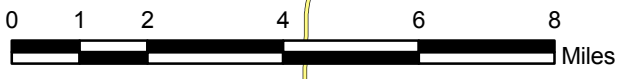
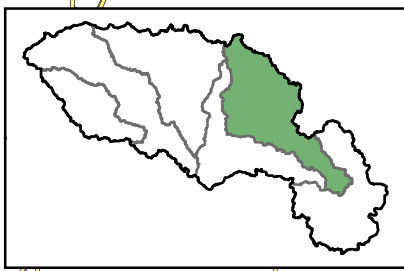
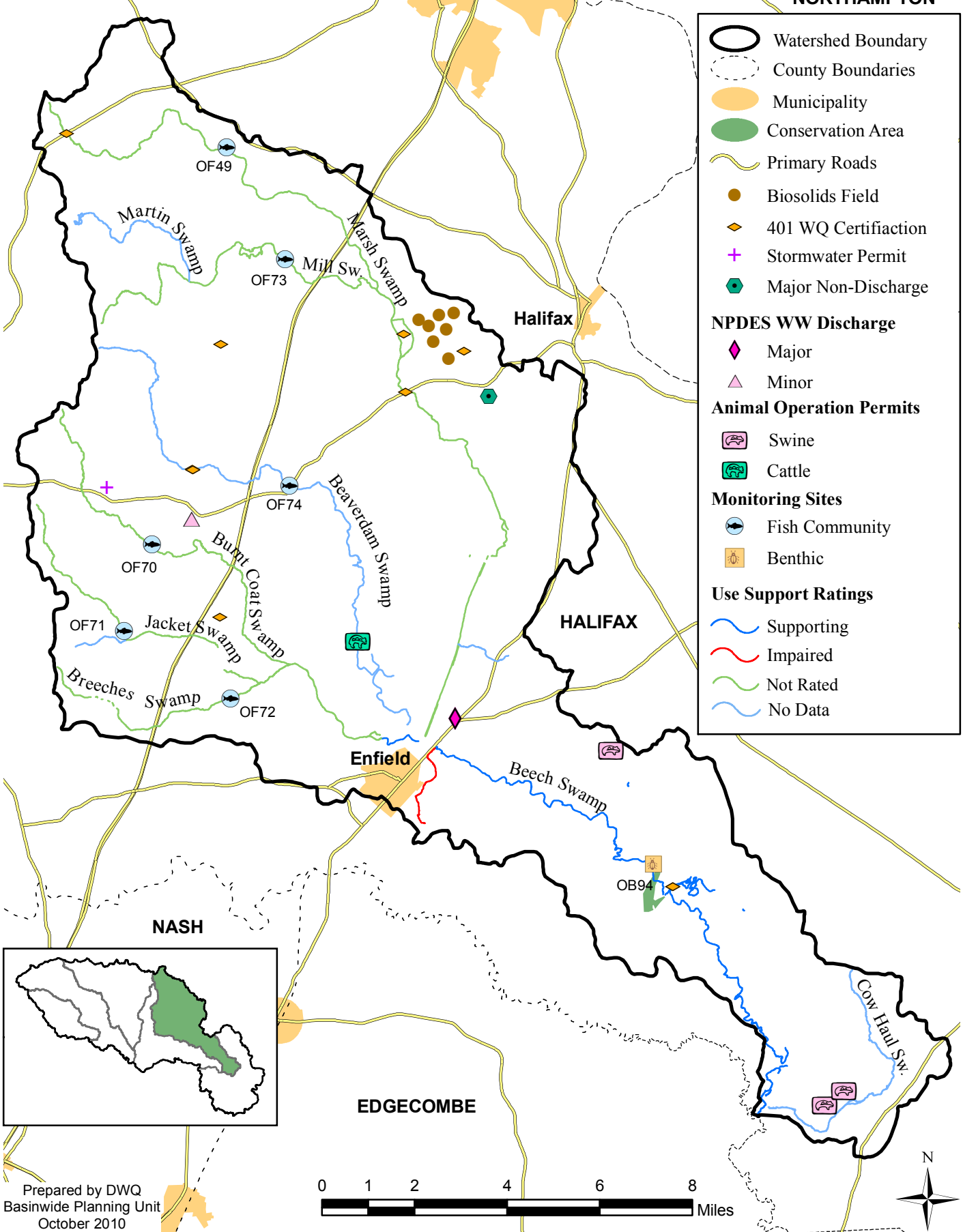
Enfield

Whitakers

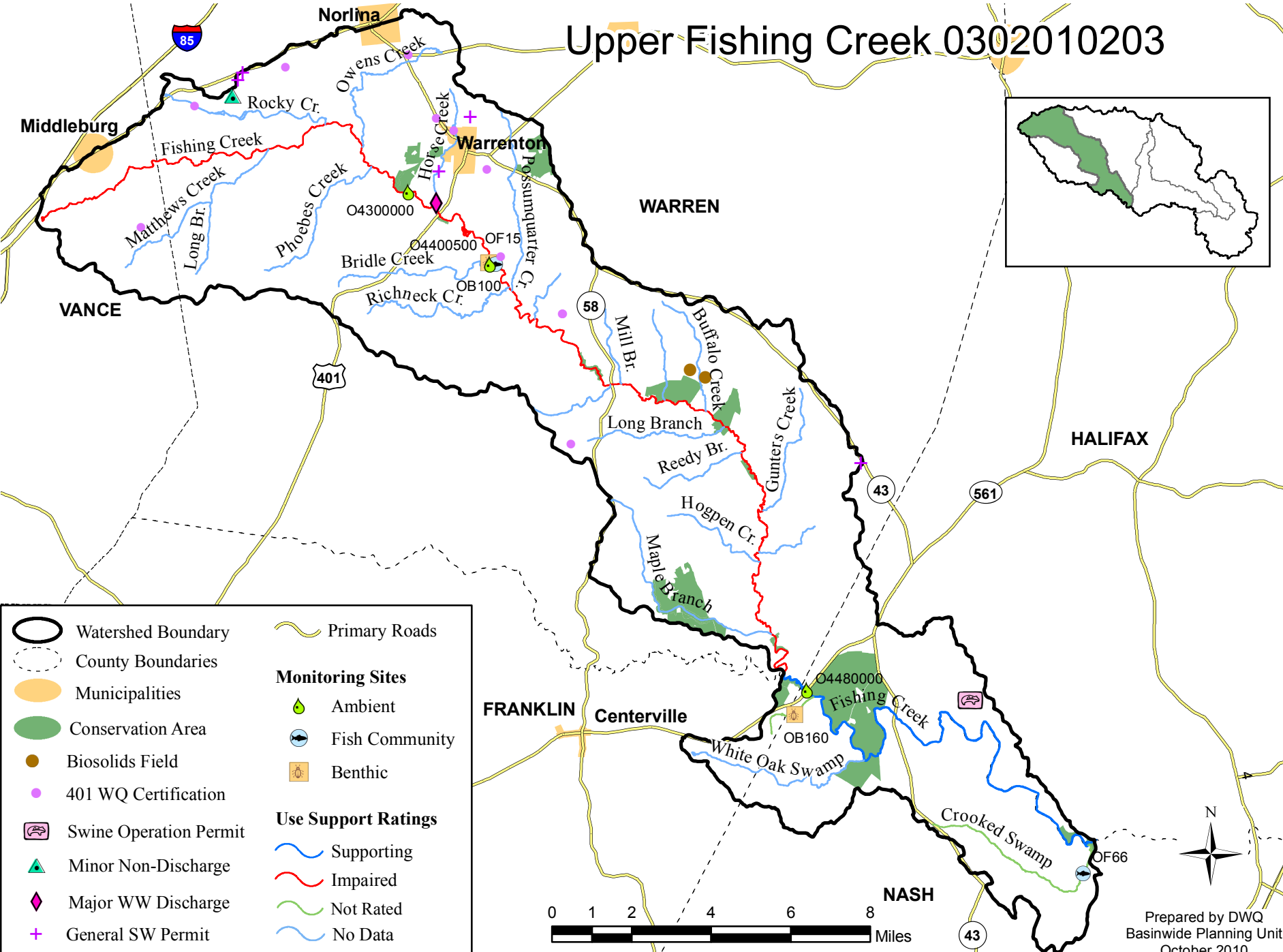
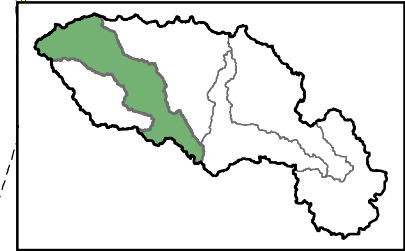
EDGECOMBE

Beech Swamp 0302010204

NORTHAMPTON



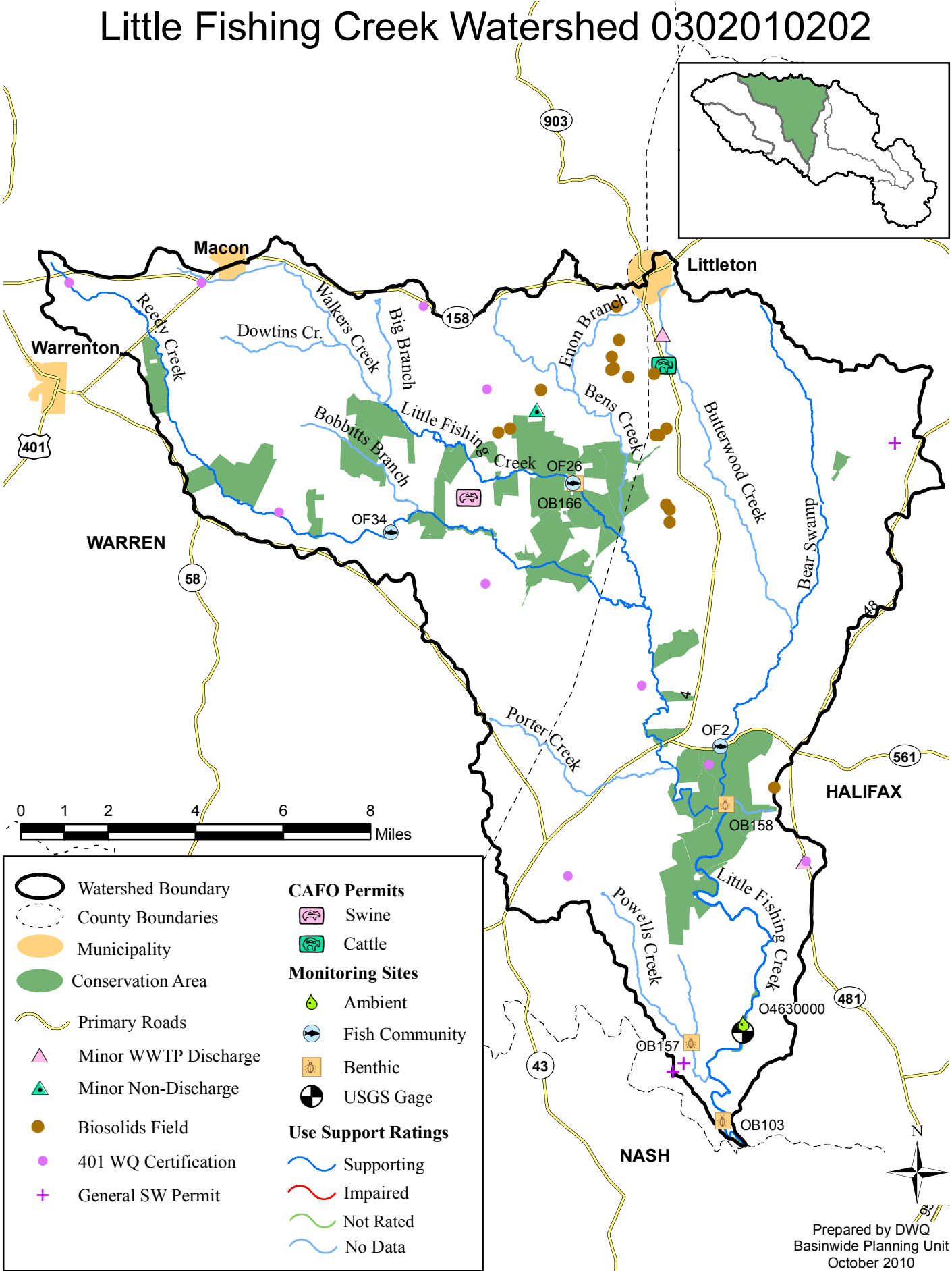
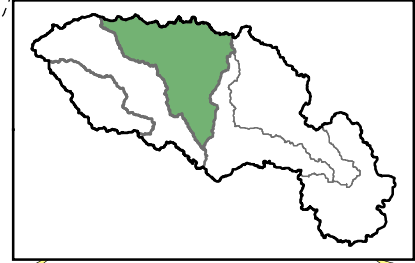
Upper Fishing Creek 0302010203



	Watershed Boundary		Primary Roads
	County Boundaries	Monitoring Sites	
	Municipalities		Ambient
	Conservation Area		Fish Community
	Biosolids Field		Benthic
	401 WQ Certification	Use Support Ratings	
	Swine Operation Permit		Supporting
	Minor Non-Discharge		Impaired
	Major WW Discharge		Not Rated
	General SW Permit		No Data

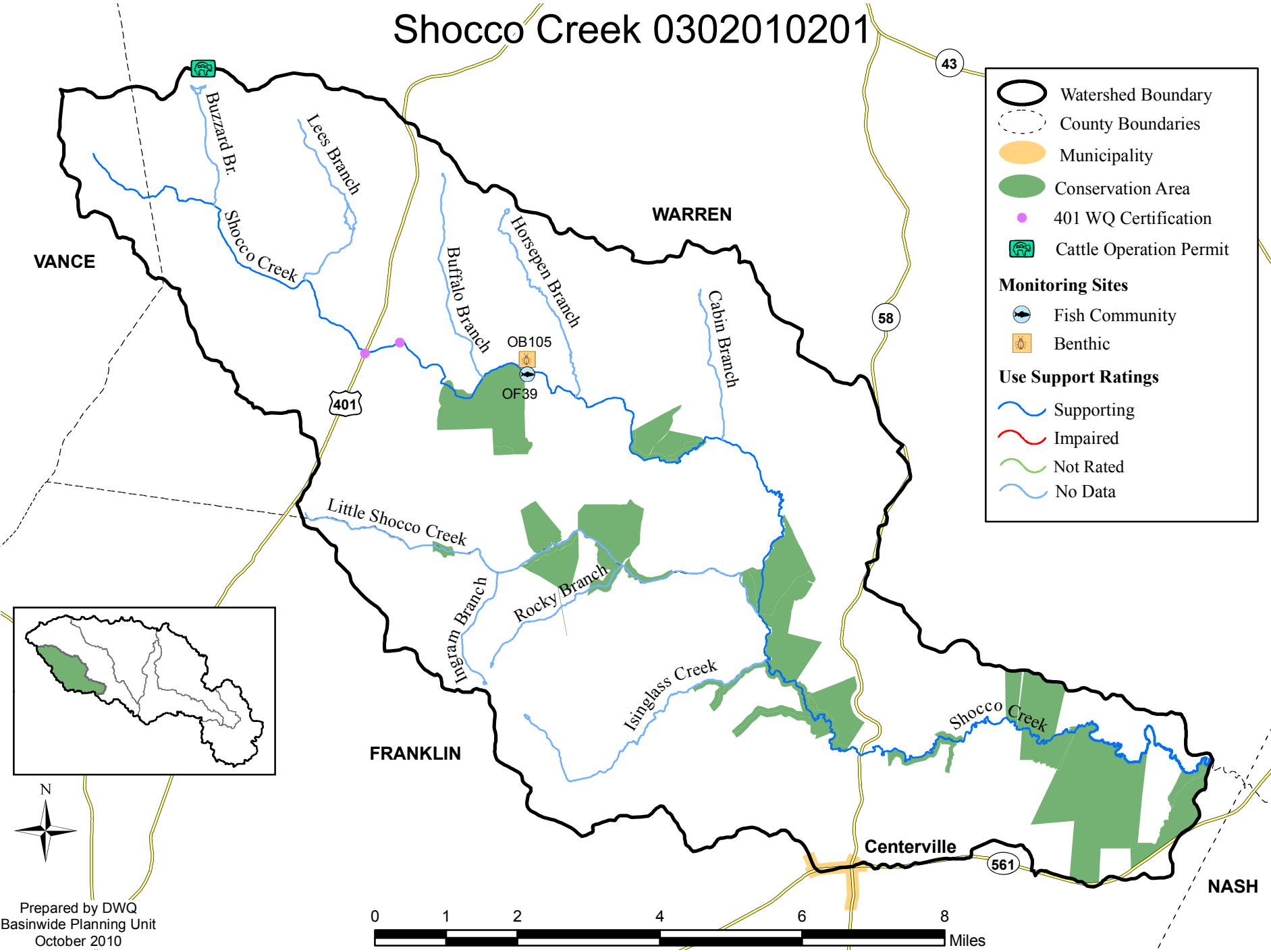


Little Fishing Creek Watershed 0302010202



	Watershed Boundary		Swine
	County Boundaries		Cattle
	Municipality	Monitoring Sites	
	Conservation Area		Ambient
	Primary Roads		Fish Community
	Minor WWTP Discharge		Benthic
	Minor Non-Discharge		USGS Gage
	Biosolids Field	Use Support Ratings	
	401 WQ Certification		Supporting
	General SW Permit		Impaired
			Not Rated
			No Data

Shocco Creek 0302010201



- Watershed Boundary
- County Boundaries
- Municipality
- Conservation Area
- 401 WQ Certification
- Cattle Operation Permit
- Monitoring Sites**
- Fish Community
- Benthic
- Use Support Ratings**
- Supporting
- Impaired
- Not Rated
- No Data

