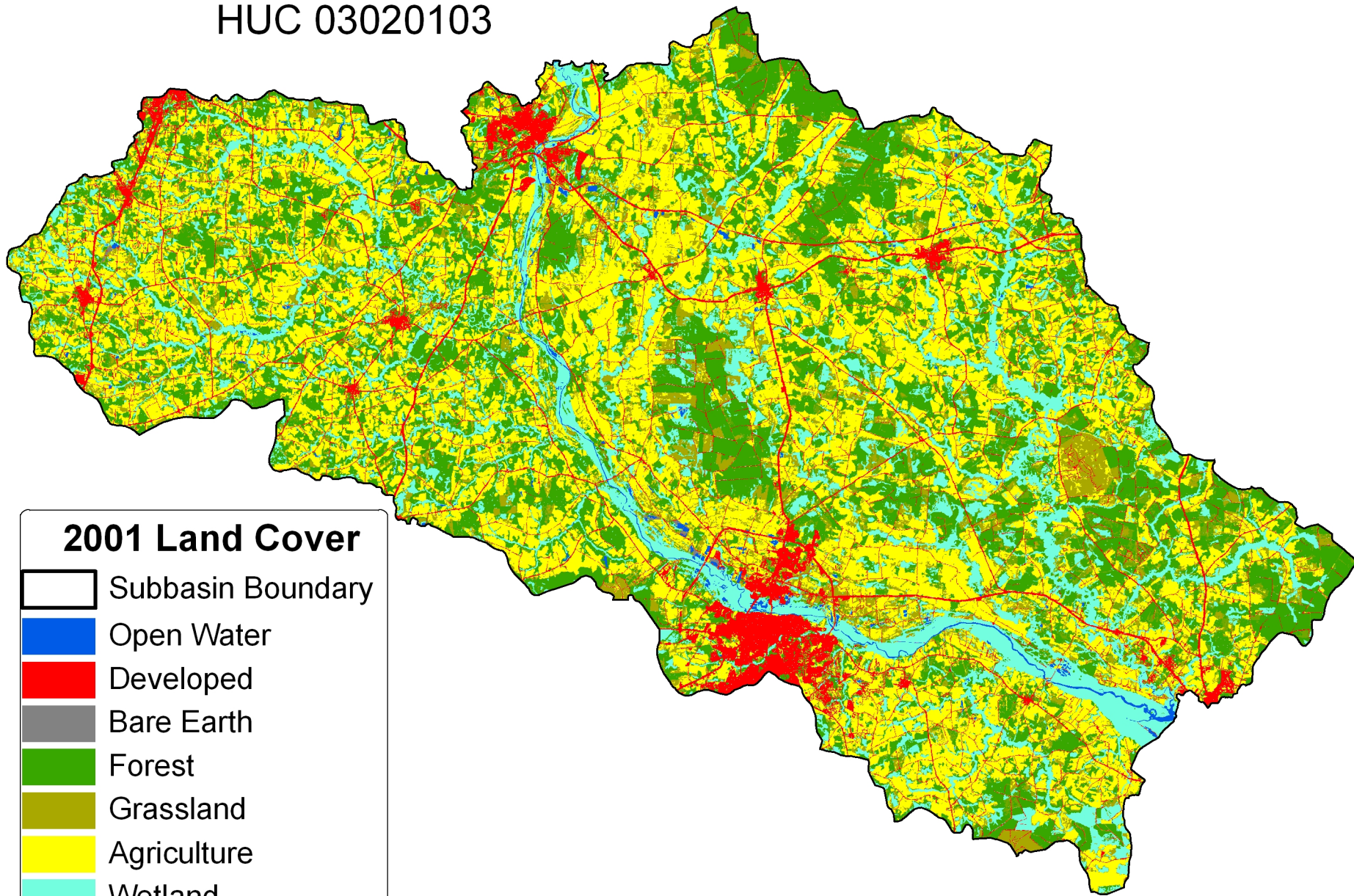


Appendix 3D








Maps

Tar River Subbasin
HUC 03020103

Tar River Subbasin HUC 03020103

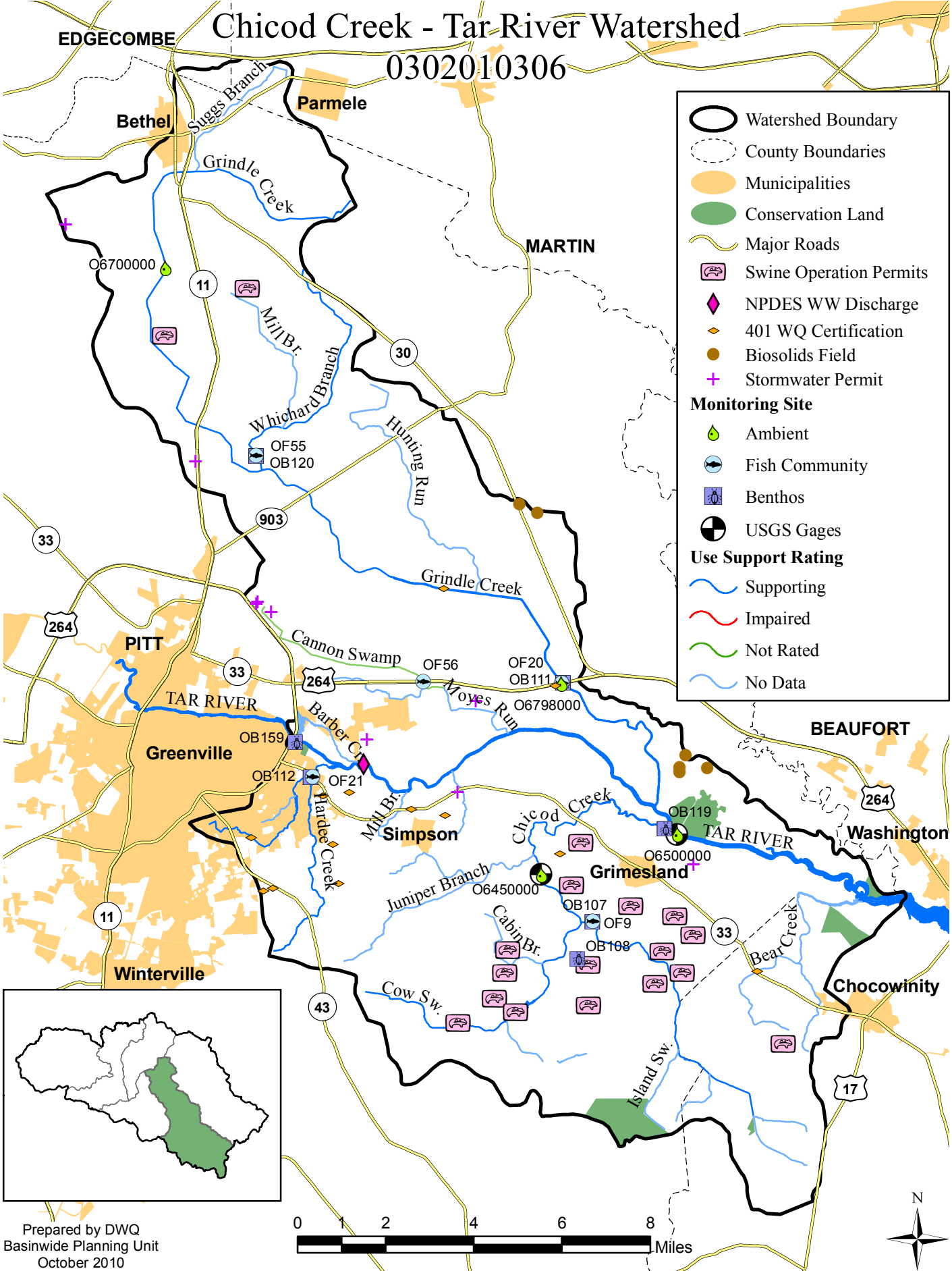


2001 Land Cover

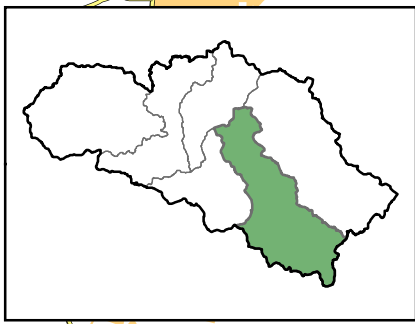
-  Subbasin Boundary
-  Open Water
-  Developed
-  Bare Earth
-  Forest
-  Grassland
-  Agriculture
-  Wetland

Chicod Creek - Tar-River Watershed

0302010306



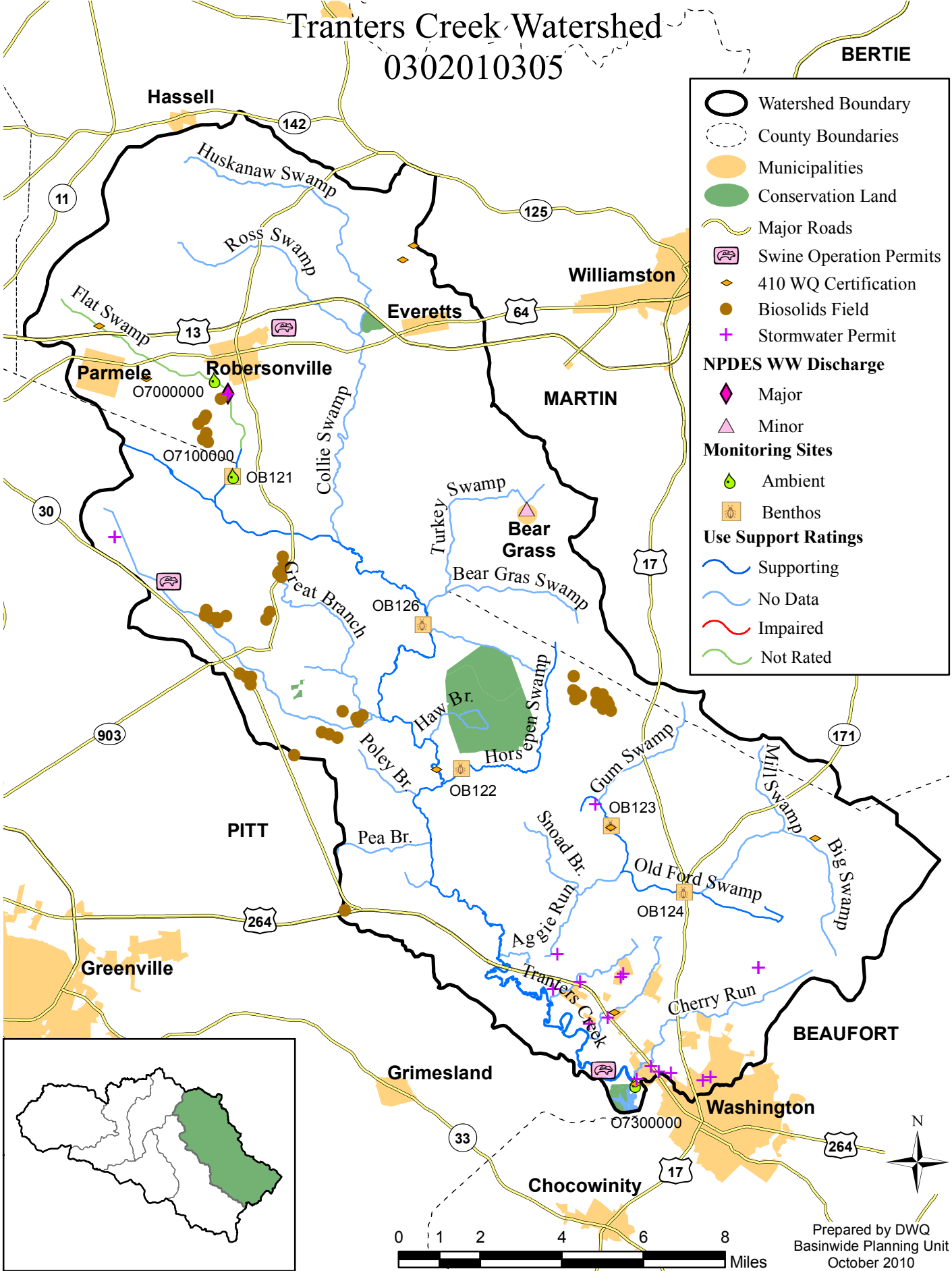
	Watershed Boundary
	County Boundaries
	Municipalities
	Conservation Land
	Major Roads
	Swine Operation Permits
	NPDES WW Discharge
	401 WQ Certification
	Biosolids Field
	Stormwater Permit
Monitoring Site	
	Ambient
	Fish Community
	Benthos
	USGS Gages
Use Support Rating	
	Supporting
	Impaired
	Not Rated
	No Data



Tranters Creek Watershed

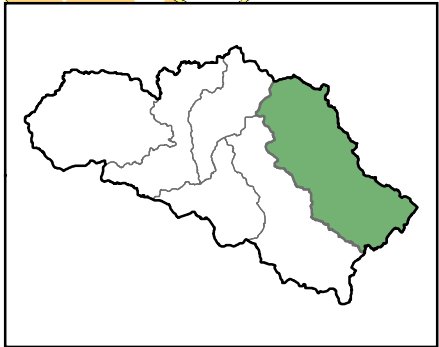
0302010305

BERTIE



Legend

- Watershed Boundary
- County Boundaries
- Municipalities
- Conservation Land
- Major Roads
- Swine Operation Permits
- 410 WQ Certification
- Biosolids Field
- Stormwater Permit
- NPDES WW Discharge**
- Major
- Minor
- Monitoring Sites**
- Ambient
- Benthos
- Use Support Ratings**
- Supporting
- No Data
- Impaired
- Not Rated

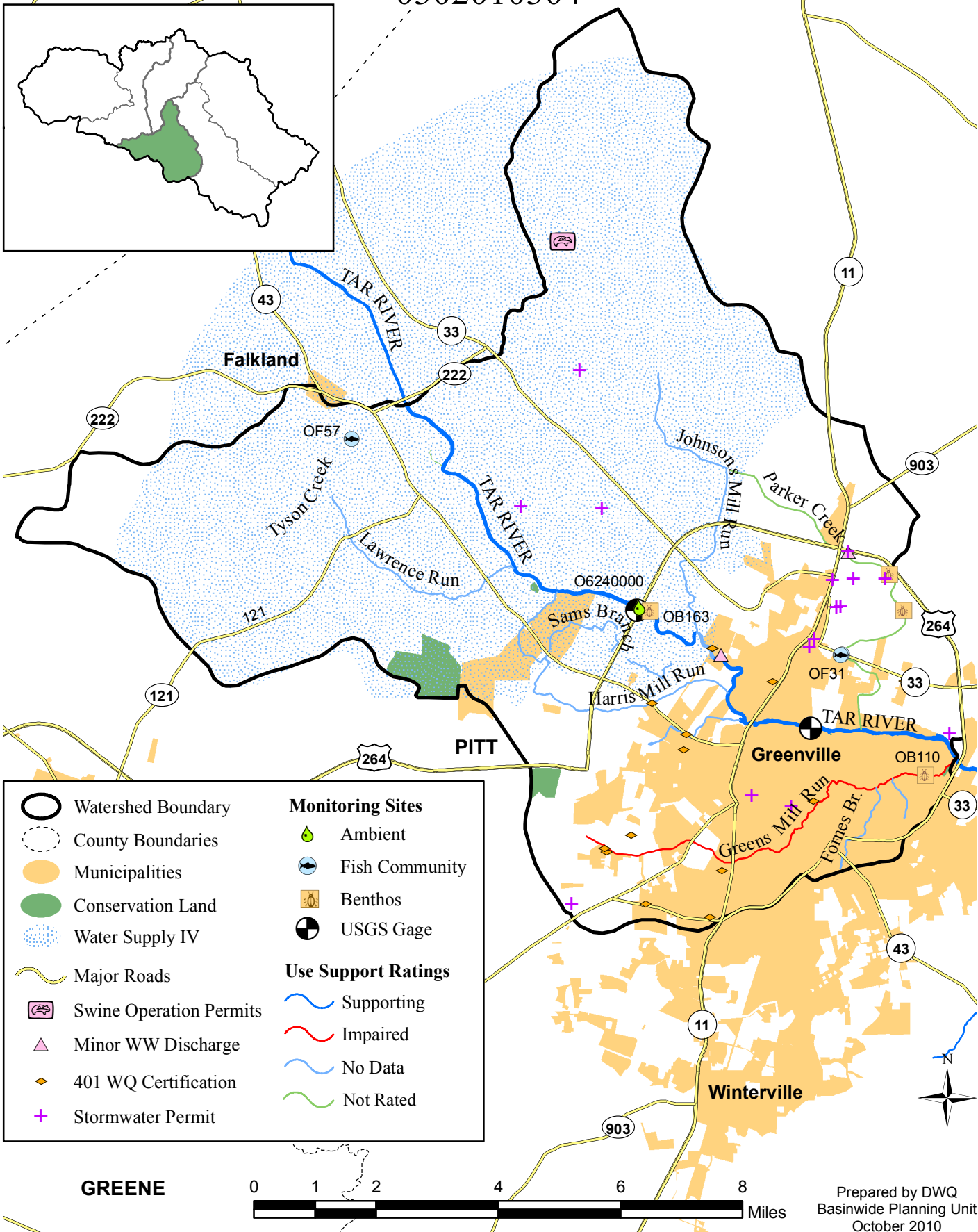
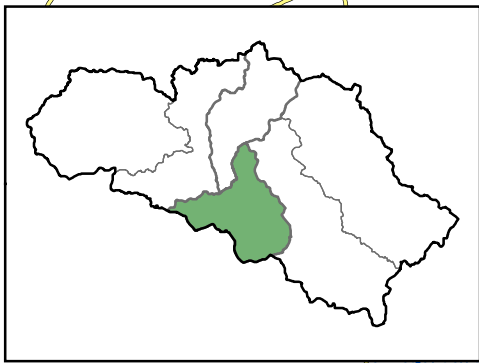


Prepared by DWQ
Basinwide Planning Unit
October 2010

City of Greenville-Tar River Watershed

0302010304

EDGECOMBE



	Watershed Boundary		Ambient
	County Boundaries		Fish Community
	Municipalities		Benthos
	Conservation Land		USGS Gage
	Water Supply IV	Use Support Ratings	
	Major Roads		Supporting
	Swine Operation Permits		Impaired
	Minor WW Discharge		No Data
	401 WQ Certification		Not Rated
	Stormwater Permit		

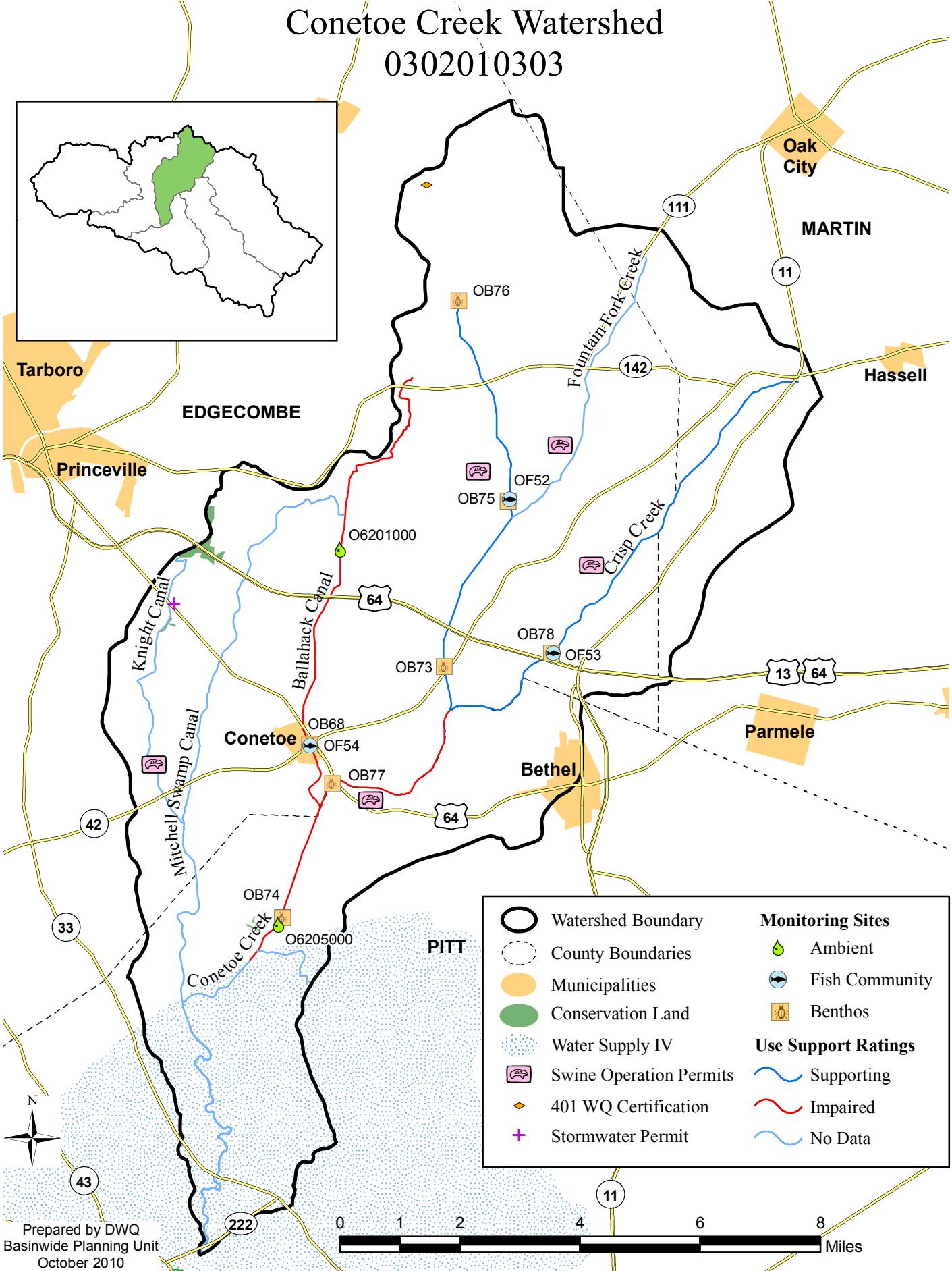
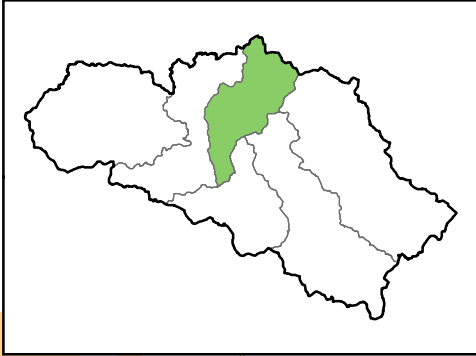
GREENE



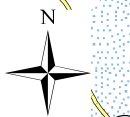
Prepared by DWQ
Basinwide Planning Unit
October 2010

Conetoe Creek Watershed

0302010303

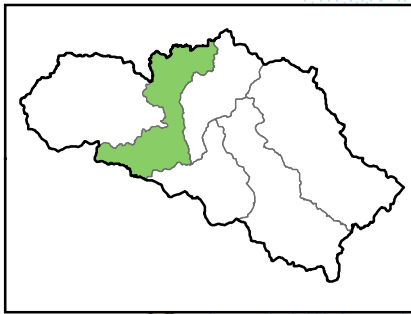


	Watershed Boundary	Monitoring Sites	
	County Boundaries		Ambient
	Municipalities		Fish Community
	Conservation Land		Benthos
	Water Supply IV	Use Support Ratings	
	Swine Operation Permits		Supporting
	401 WQ Certification		Impaired
	Stormwater Permit		No Data



Otter Creek-Tar River Watershed

0302010302



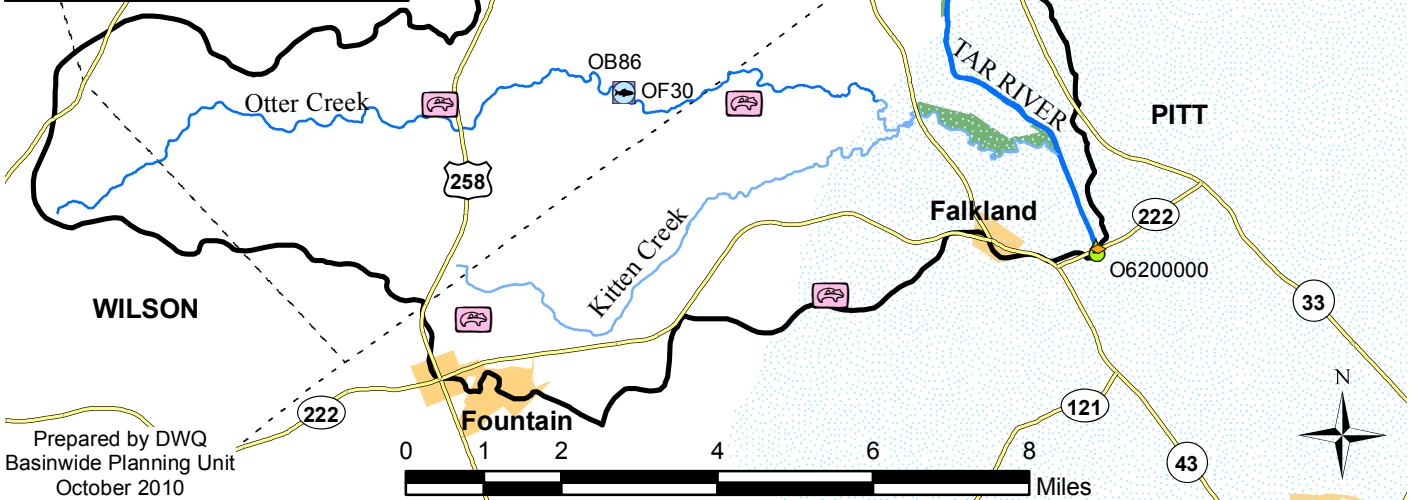
- Watershed Boundary
- County Boundaries
- Municipalities
- Conservation Land
- Water Supply IV
- Primary Roads
- Animal Operation Permits
- 401 WQ Certification
- Biosolid Field
- NPDES WW Discharge
- Minor Non-Discharge
- Stormwater Permit

Monitoring Sites

- Ambient
- Fish Community
- Benthos
- USGS Gage

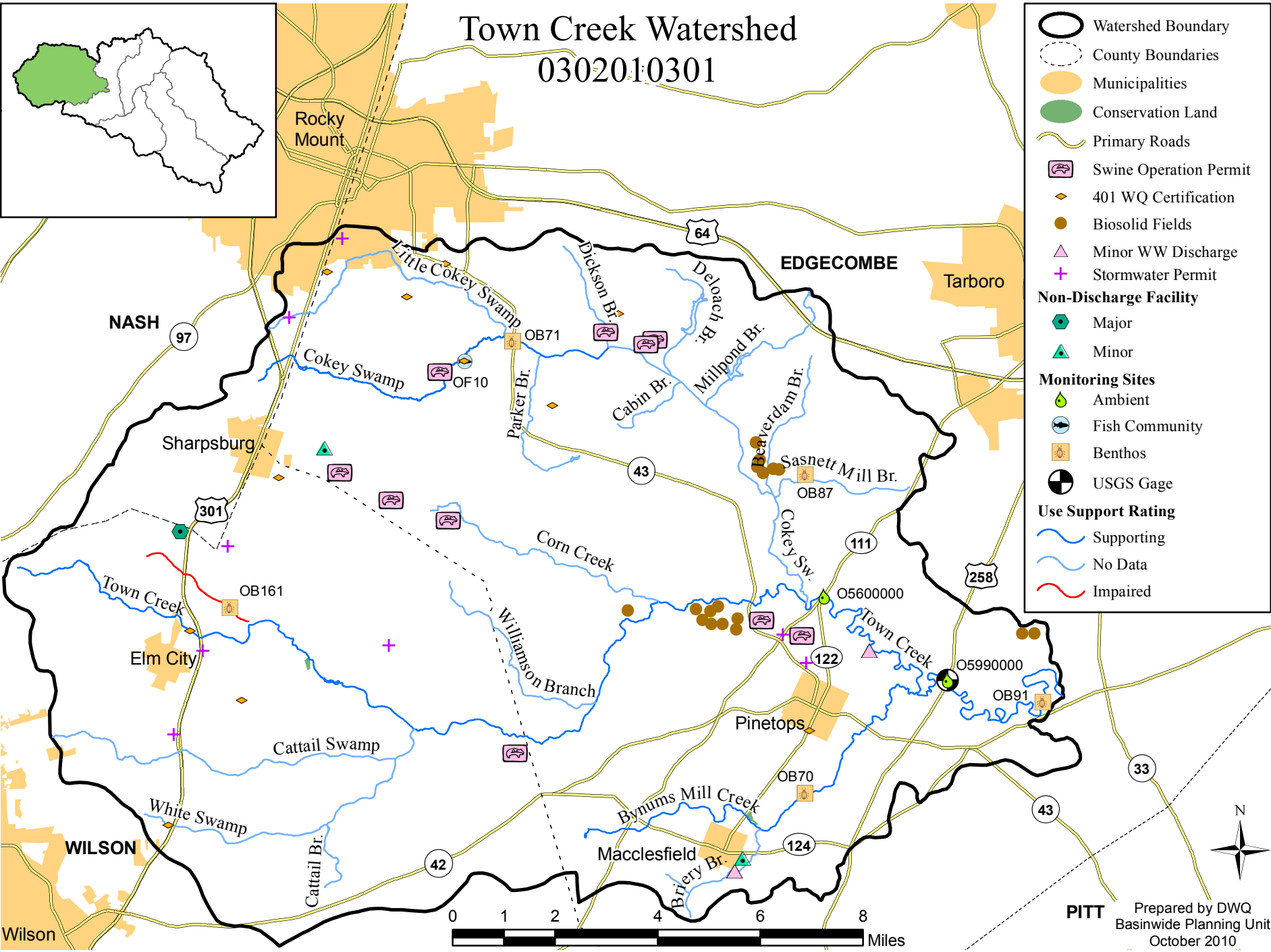
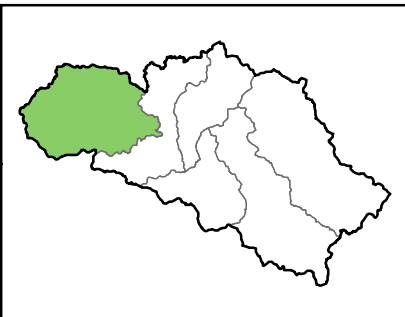
Use Support Ratings

- Supporting
- No Data
- Impaired
- Not Rated



Town Creek Watershed

0302010301



- Watershed Boundary
- County Boundaries
- Municipalities
- Conservation Land
- Primary Roads
- Swine Operation Permit
- 401 WQ Certification
- Biosolid Fields
- Minor WW Discharge
- Stormwater Permit
- Non-Discharge Facility**
- Major
- Minor
- Monitoring Sites**
- Ambient
- Fish Community
- Benthos
- USGS Gage
- Use Support Rating**
- Supporting
- No Data
- Impaired