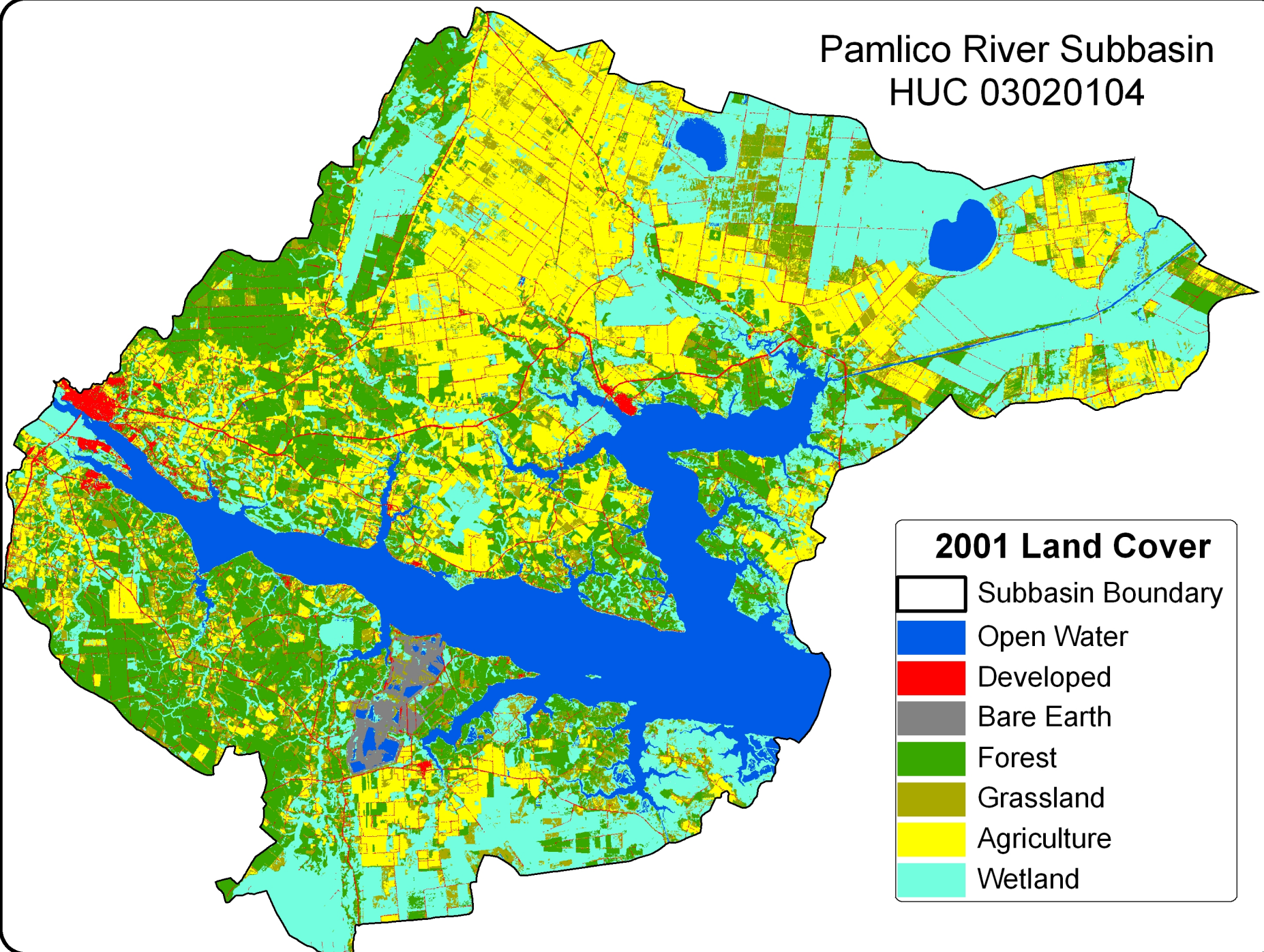


Appendix 4D

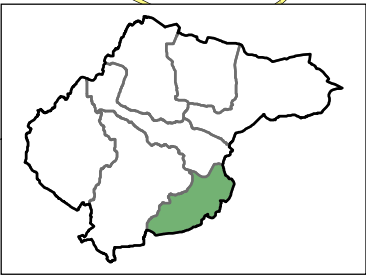
Maps

Pamlico River Subbasin
HUC 03020104

Pamlico River Subbasin HUC 03020104



Pamlico River Watershed 0302010407



Legend

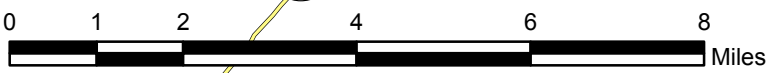
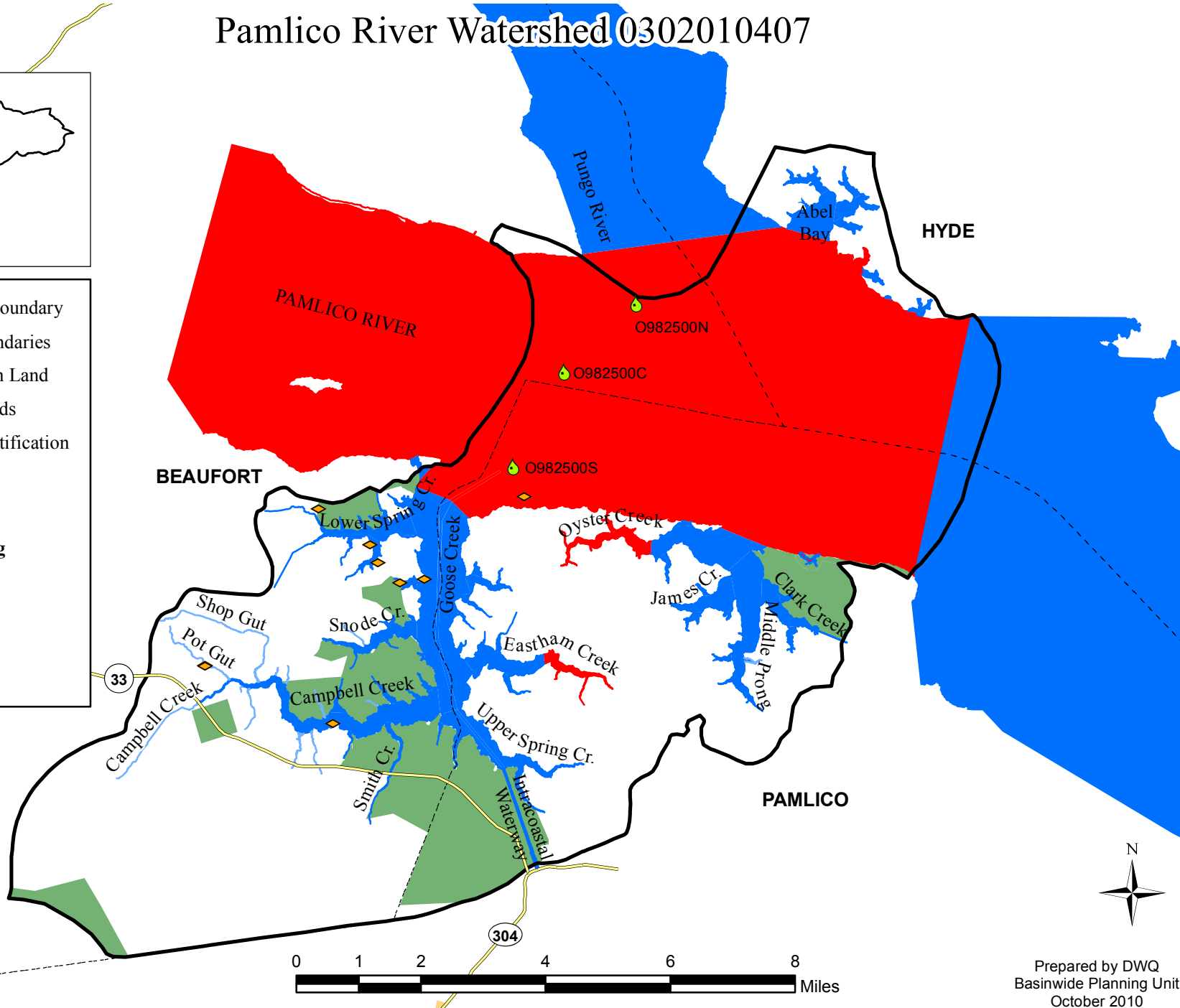
- Watershed Boundary (Solid black line)
- County Boundaries (Dashed black line)
- Conservation Land (Green fill)
- Primary Roads (Yellow line)
- 401 WQ Certification (Yellow diamond)

Monitoring Sites

- Ambient (Yellow drop icon)

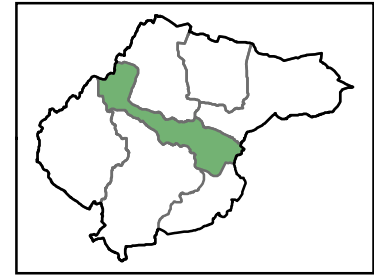
Use Support Rating

- Supporting (Blue wavy line)
- Impaired (Red wavy line)
- Not Rated (Green wavy line)
- No Data (Light blue wavy line)



MARTIN

Outlet Pungo River Watershed 0302010406



HYDE

BEAUFORT

Pantego

Belhaven

Pungo River

Pungo Swamp

Fork Swamp

Acre Swamp

OB127

264

264

Bath

Kenyon Bay

Jordan Creek

Slade Creek

Linlar Bay

Fortescue Creek

PAMLICO RIVER



- Watershed Boundary
- County Boundaries
- Municipalities
- Conservation Land
- Primary Roads
- 401 WQ Certification
- Swine Operation Permit
- Monitoring Sites**
 - Ambient
 - Fish Community
 - Benthos
- Use Support Rating**
 - Supporting
 - Impaired
 - Not Rated
 - No Data

99

306

45

32

OF1

OB127

O9750500

O9764000

O9765000

O976600C

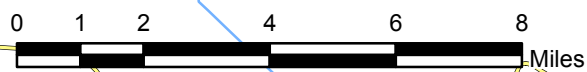
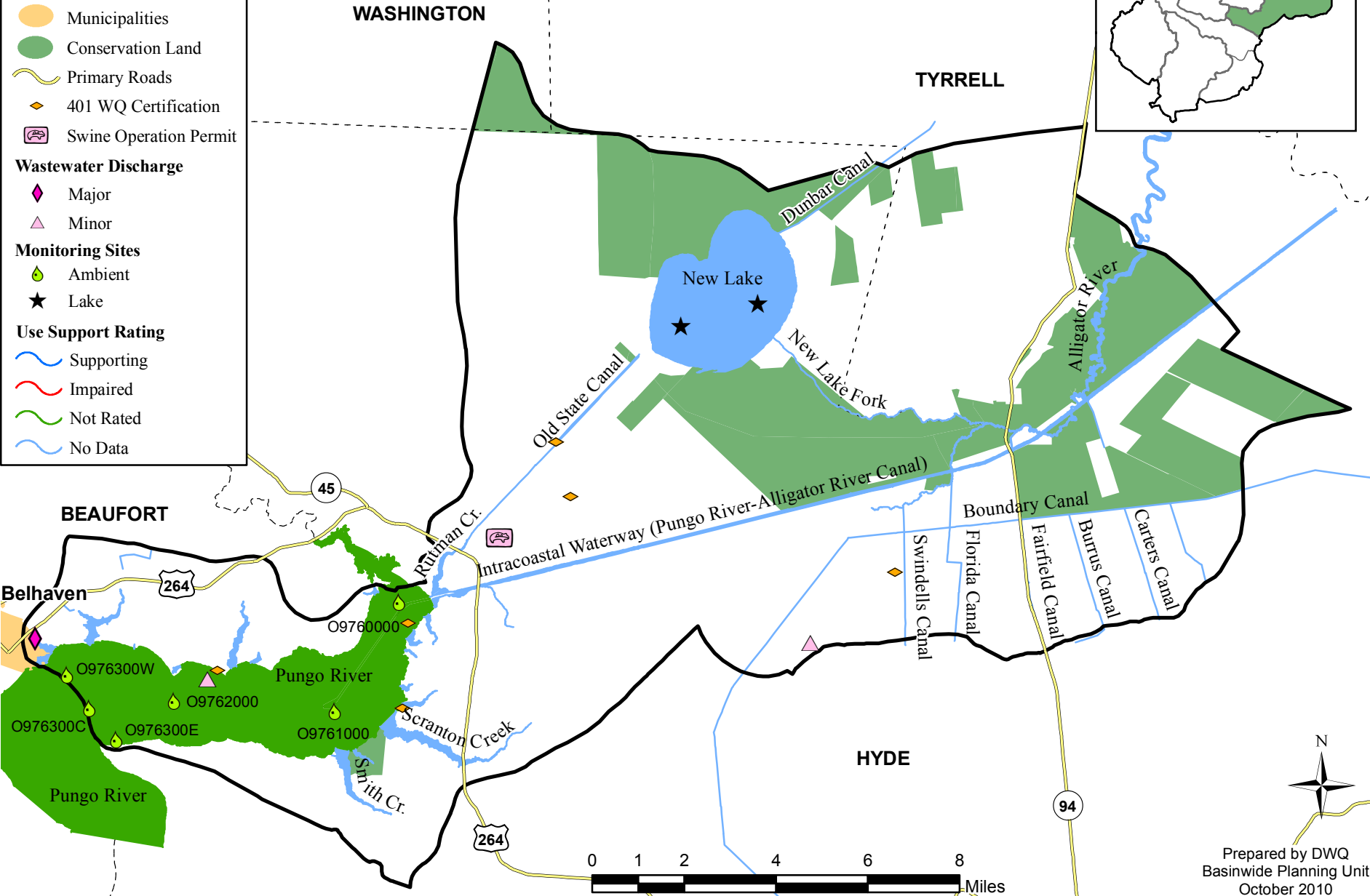
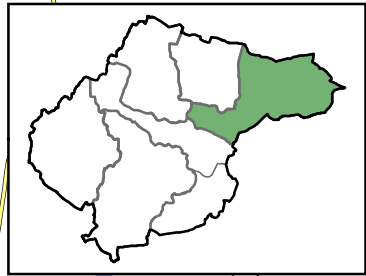
O976600E

O976600W

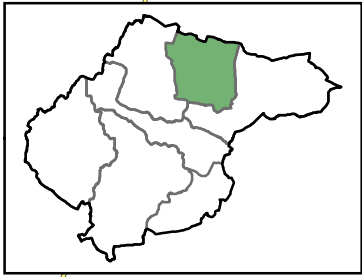


Intracoastal Waterway - Pungo River Watershed 0302010405

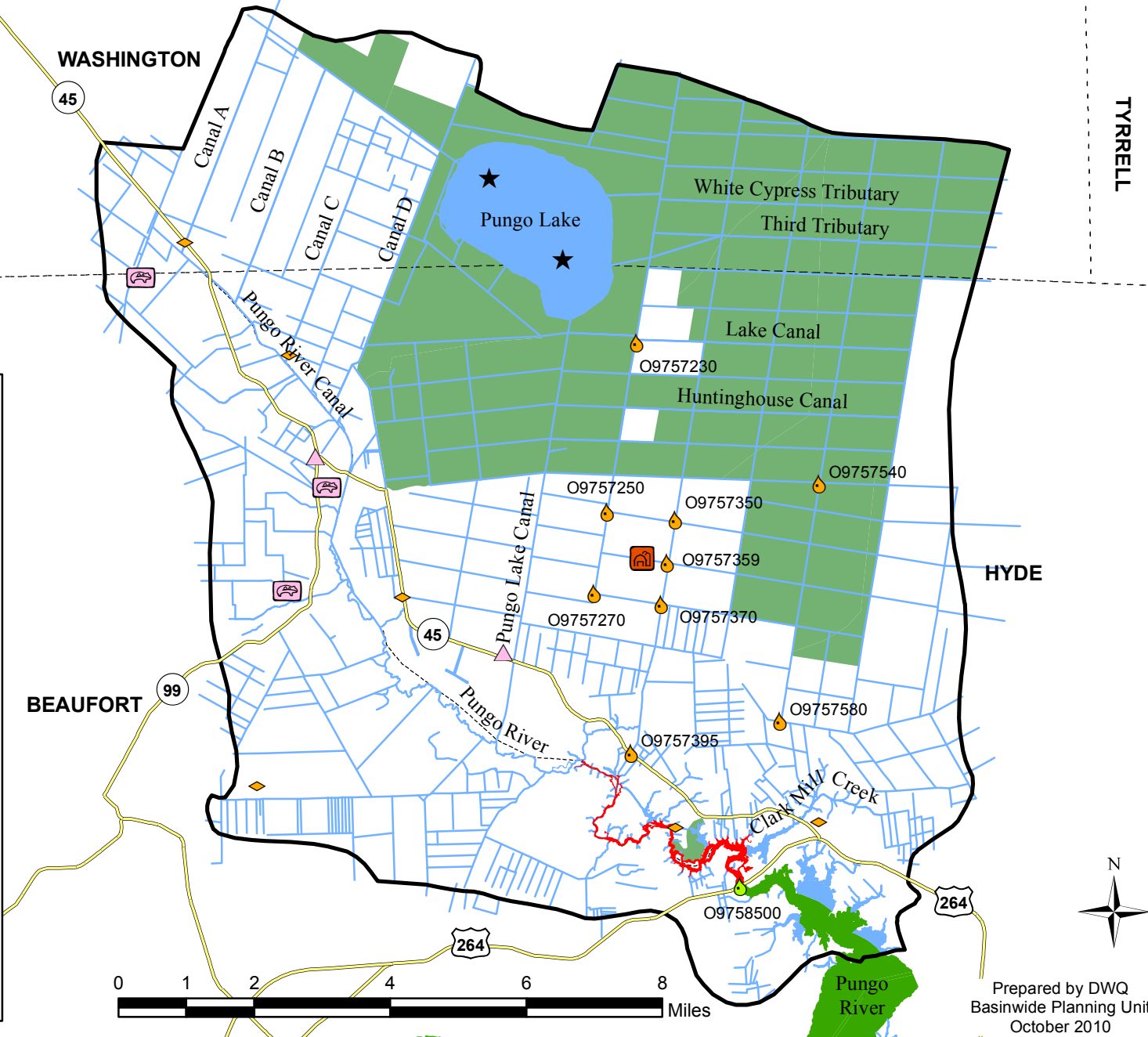
- Watershed Boundary
- County Boundaries
- Municipalities
- Conservation Land
- Primary Roads
- 401 WQ Certification
- Swine Operation Permit
- Wastewater Discharge**
- Major
- Minor
- Monitoring Sites**
- Ambient
- Lake
- Use Support Rating**
- Supporting
- Impaired
- Not Rated
- No Data



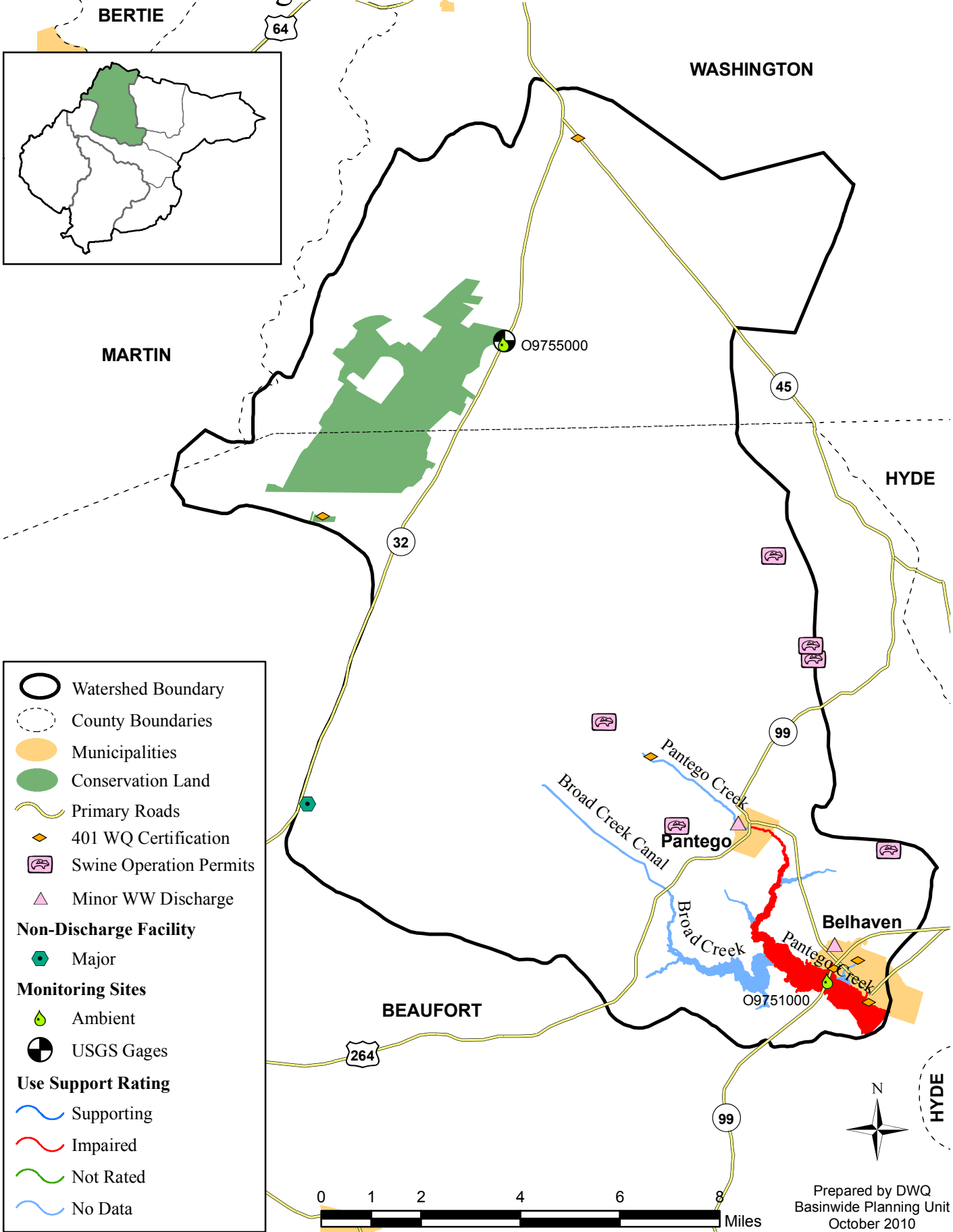
Headwaters Pungo River Watershed 0302010404



- Watershed Boundary
- County Boundaries
- Conservation Land
- Primary Roads
- 401 WQ Certification
- Minor WW Discharge
- Animal Operation Permits**
- Animal Individual
- Swine
- Monitoring Sites**
- Ambient
- Ambient Special Study
- Lake
- Use Support Rating**
- Supporting
- Impaired
- Not Rated
- No Data



Pantego Creek Watershed 0302010403



Legend

- Watershed Boundary
- County Boundaries
- Municipalities
- Conservation Land
- Primary Roads
- 401 WQ Certification
- Swine Operation Permits
- Minor WW Discharge

Non-Discharge Facility

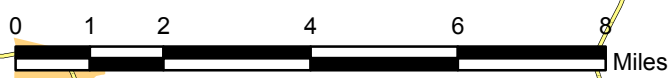
- Major

Monitoring Sites

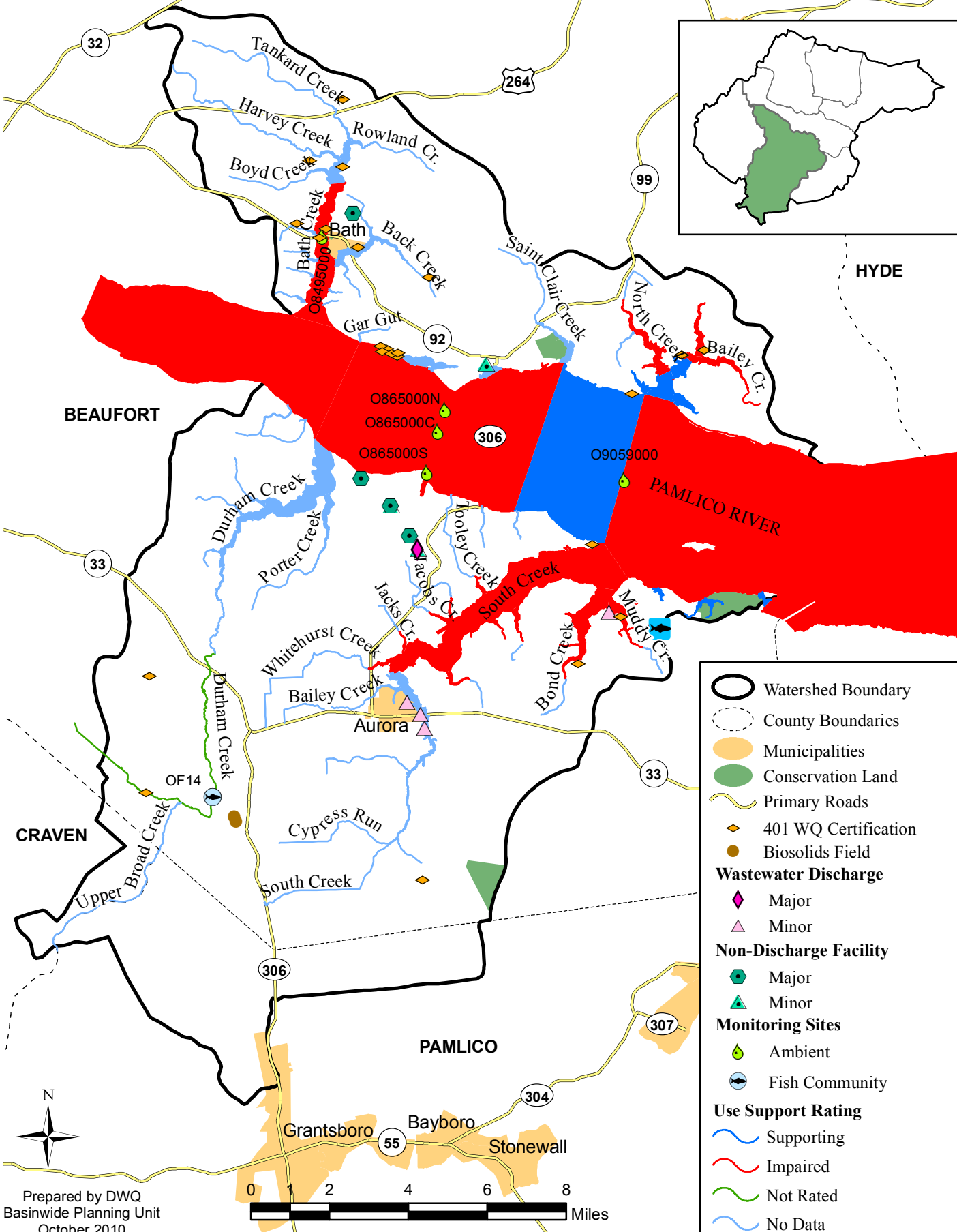
- Ambient
- USGS Gages

Use Support Rating

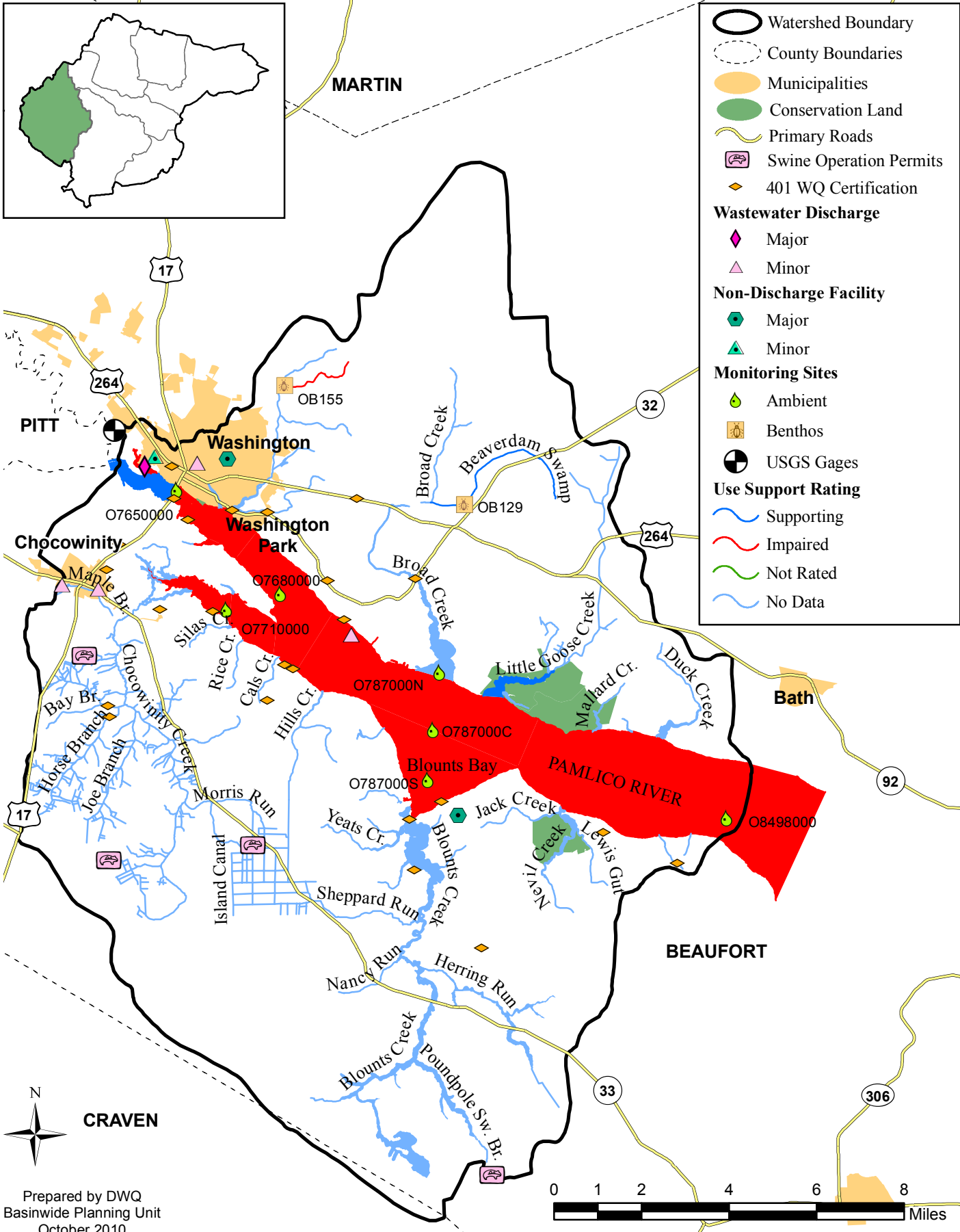
- Supporting
- Impaired
- Not Rated
- No Data



South Creek - Pamlico River Watershed 0302010402



Chocowinity Bay - Pamlico River Watershed 0302010401



- Watershed Boundary
- County Boundaries
- Municipalities
- Conservation Land
- Primary Roads
- Swine Operation Permits
- 401 WQ Certification
- Wastewater Discharge**
- Major
- Minor
- Non-Discharge Facility**
- Major
- Minor
- Monitoring Sites**
- Ambient
- Benthos
- USGS Gages
- Use Support Rating**
- Supporting
- Impaired
- Not Rated
- No Data