

Appendix D

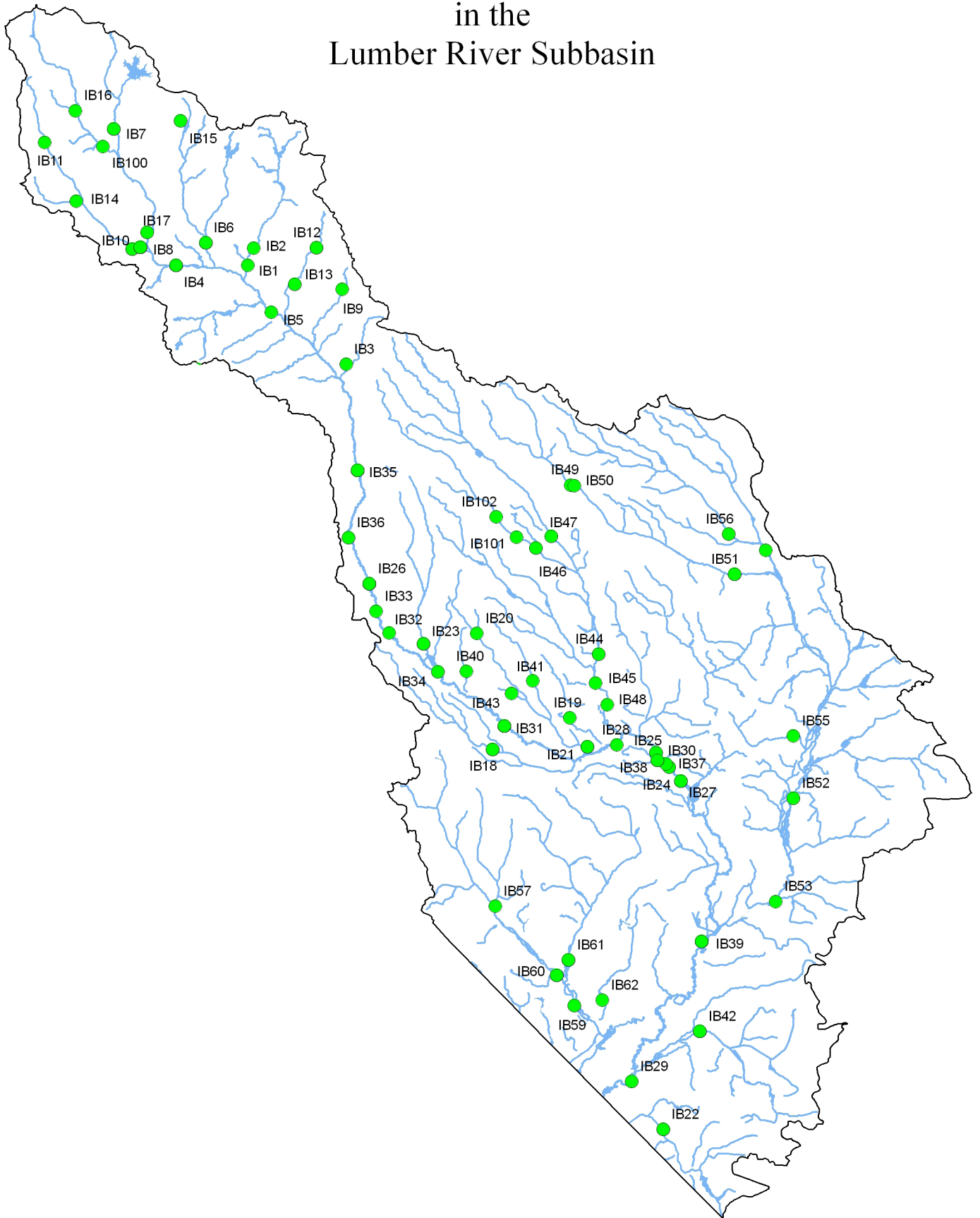
Benthic Macroinvertebrate Sites Maps and List

SITE ID	STREAM	ASSESSMENT UNIT	LOCATION	LAST SAMPLED
LUMBER RIVER SUBBASIN: 03040203				
IB1	Aberdeen Creek	14-2-11-(6)	Near SR 1100	1987
IB2	Aberdeen Creek	14-2-11-(6)	SR 1102	1987
IB3	Buffalo Creek	14-2.5	SR 1203	1984
IB4	Drowning Creek	14-2-(6.5)	SR 1004	2006
IB5	Drowning Creek	14-2-(10.5)	US 15-501	2006
IB6	Horse Creek	14-2-10b	SR 1102	2006
IB7	Jackson Creek	14-2-5	SR1122	2006
IB8	Joes Branch	14-2-6ut54	Near SR 1003	1990
IB9	Mountain Creek	14-2-16-(2)	SR 1219	2001
IB10	Naked Creek	14-2-6	SR 1003	2006
IB11	Naked Creek	14-2-6	SR 1490	1990
IB12	Quewhiffle Creek	14-2-14	SR 1214	1998
IB13	Quewhiffle Creek	14-2-14	SR 1225	1989
IB14	Rocky Ford Branch	14-2-6-1	SR 1424	1990
IB15	UT to Deep Creek	14-2-10-1-(1)	Near Topaz Drive	1986
IB16	UT to Drowning Creek	14-2-2	SR 1524	2006
IB17	White Cedar Branch	14-2-(1)but24	Near SR 1465	1986
IB18	Back Swamp	14-8-(2.5)	SR 1003	2006
IB19	Back Swamp	14-9.5	US 301	1991
IB20	Bear Swamp	14-9-(0.5)	NC 710	2004
IB21	Bear Swamp	14-9-(1.5)	SR 1339	2006
IB22	Gapway Swamp	14-31	SR 1356	2006
IB23	Gum Swamp	14-5	SR 1312	2006
IB24	Lumber River	14-(13)c	Approximately 0.25 mi. downstream of SR 2202	1985
IB25	Lumber River	14-(13)a	NC 41-72	2006
IB26	Lumber River	14-(4.5)b	NC 71	2001
IB27	Lumber River	14-(13)d	NC 72	2006
IB28	Lumber River	14-(7)	NC 72-711	1991
IB29	Lumber River	14-(13)f	NC 904 @ Fairbluff	1991
IB30	Lumber River	14-(13)c	Near Hestertown Road	1986
IB31	Lumber River	14-(7)	SR 1003	2006
IB32	Lumber River	14-(4.5)c	SR 1153	1985
IB33	Lumber River	14-(4.5)b	SR 1303	1985
IB34	Lumber River	14-(4.5)d	SR 1354	1986
IB35	Lumber River	14-(3)b	SR 1404	2006
IB36	Lumber River	14-(3)b	SR 1433	1986
IB37	Lumber River	14-(3)b	SR 2202	1985
IB38	Lumber River	14-(13)a	SR 2289	1991
IB39	Lumber River	14-(13)f	US 74 @ Boardman	2006
IB40	Mill Branch	14-6	NC 710	2004
IB41	Moss Neck Swamp	14-9-3-(2)	SR 1570	2004

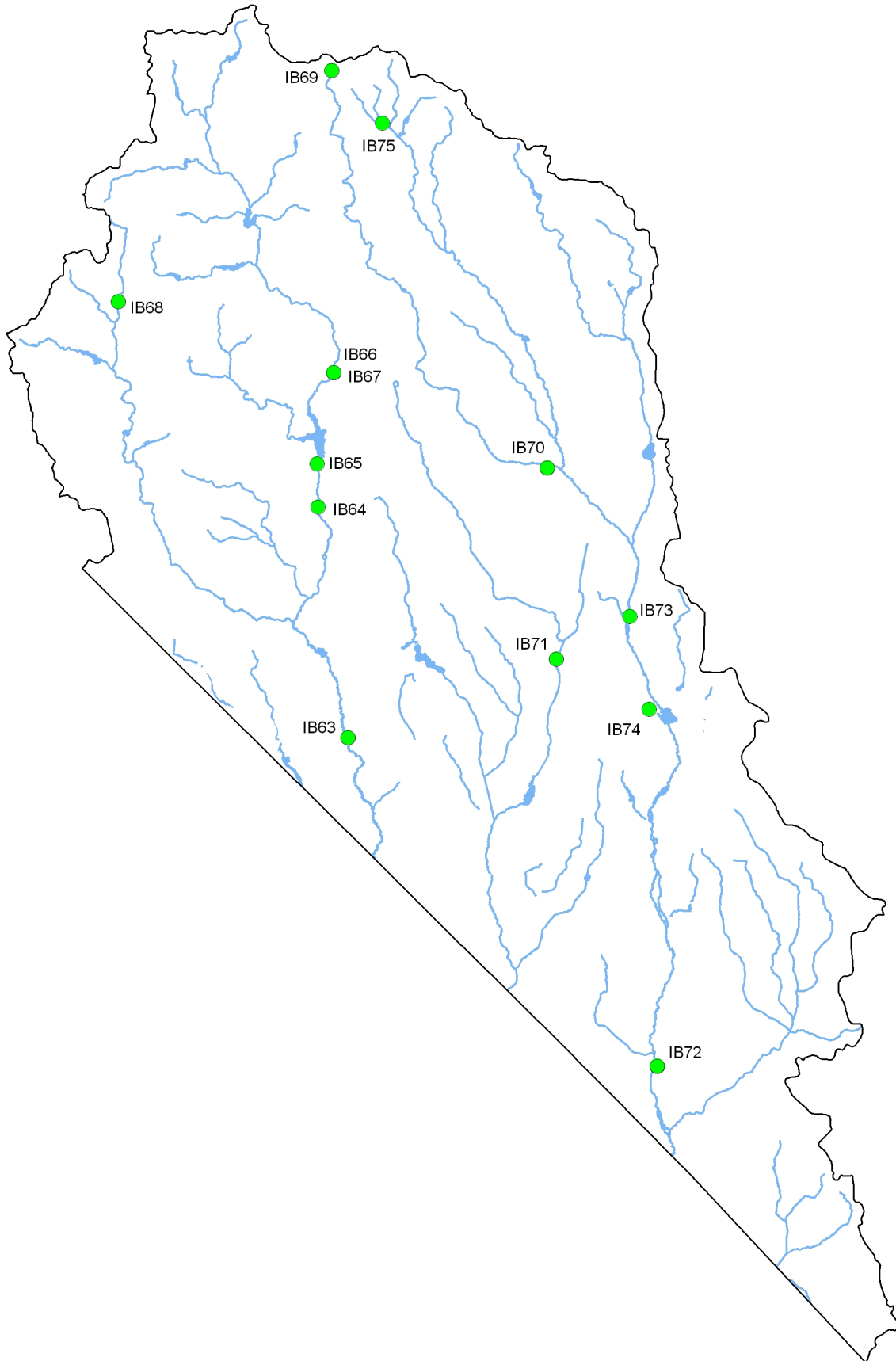
SITE ID	STREAM	ASSESSMENT UNIT	LOCATION	LAST SAMPLED
IB42	Porter Swamp	14-27	SR 1503	2006
IB43	Watering Hole Swamp	14-9-2	Joseph H Road	2004
IB44	Big Raft Swamp	14-10-(5.5)	NC 211	1991
IB45	Big Raft Swamp	14-10-(5.5)	SR 1526	1988
IB46	Little Raft Swamp	14-10-5b	SR 1505	2006
IB47	Raft Swamp	14-10-(1)	SR 1505	2006
IB48	Raft Swamp	14-10-(5.5)	SR 1527	2006
IB49	Big Marsh Swamp	14-22-2	NC 71 NW Side	1992
IB50	Big Marsh Swamp	14-22-2	NC 71 SE Side	1992
IB51	Big Marsh Swamp	14-22-2	SR 1924	2006
IB52	Big Swamp	14-22b	NC 211	1996
IB53	Big Swamp	14-22b	SR 1002	1991
IB54	Gallberry Swamp	14-22-1	NC 20	1991
IB55	Jackson Swamp	14-22-10	SR 2100	1992
IB56	Little Marsh Swamp	14-22-1-3	SR 1907	2006
IB57	Ashpole Swamp	14-30a	NC 130	2006
IB58	Ashpole Swamp	14-30a	NC 41	2006
IB59	Ashpole Swamp	14-30b	SR 2258	1986
IB60	Ashpole Swamp	14-30b	SR 2258	2006
IB61	Hog Swamp	14-30-7	SR 2262	2006
IB62	Indian Swamp	14-30-8	SR 2255	2006
IB100	Drowning Creek	14-2-(1)a	SR 1124	1989
IB101	Little Raft Swamp	14-10-5a	SR 1776	2001
IB102	Little Raft Swamp	14-10-5a	SR 1323	2006
LITTLE PEE DEE RIVER SUBBASIN: 03040204				
IB63	Gum Swamp	14-32-(12)	US 15-401	2001
IB64	Gum Swamp Creek	14-32-(10)	Railroad Trestle	1990
IB65	Gum Swamp Creek	14-32-(10)	SR 1319	1990
IB66	Gum Swamp Creek	14-32-(7)	SR 1323	2006
IB67	Gum Swamp Creek	14-32-(7)	SR 1323	2001
IB68	Joes Creek	14-32-14	SR 1610	2006
IB69	Jordan Creek	14-34-4-(2)	Near SR 1328	1986
IB70	Jordan Creek	14-34-4-(2)	US 401	2006
IB71	Leith Creek	14-33a	SR 1609	2006
IB72	Shoheel Creek	14-34	SR 1101	2006
IB73	Shoheel Creek	14-34	SR 1369	1990
IB74	Shoheel Creek	14-34	SR 1612	1990
IB75	West Prong Juniper Creek	14-34-4-3	SR 1328	2005
WACCAMAW RIVER SUBBASIN: 03040206				
IB76	Big Creek	15-2-6	SR 1947	1991
IB77	Friar Swamp	15-2-6-3	SR 1740	2006
IB78	Slap Swamp	15-2-6-4	SR 1740	1996
IB79	Waccamaw River	15-(1)b	Crusoe Island	1991

SITE ID	STREAM	ASSESSMENT UNIT	LOCATION	LAST SAMPLED
IB80	Waccamaw River	15-(1)a	Near Waccamaw Shores	1991
IB81	Waccamaw River	15-(1)c	SR 1928	2001
IB82	Caw Caw Swamp	15-23	SR 1305	1998
IB83	Grissett Swamp	15-17-1-11	SR 1141	2006
IB84	Grissett Swamp	15-17-1-(5)	SR 1173	1991
IB85	Juniper Creek	15-7-1	NC 211	1991
IB86	Juniper Creek	15-7	SR 1928	1991
IB87	Monie Swamp	15-17-1-12	SR 1006	1996
IB88	Waccamaw River	15-(1)e	NC 130	2001
IB89	Waccamaw River	15-(1)e	NC 904	2001
IB90	Brown Marsh Swamp	15-4-1-1-1	SR 1700	1996
IB91	Elkton Marsh	15-4-1-1-2	SR 1710	2006
IB92	Soules Swamp	15-4-8	SR 1429	1992
IB93	Western Prong Creek	15-4-2	US 701 Bypass	2006
IB94	White Marsh	15-4b	Old Railroad Grade	1994
IB95	White Marsh	15-4b	SR 1001	2006
IB96	White Marsh	15-4a	US 74 Business	1994
LONG BAY SUBBASIN: 03040208				
IB97	Lockwoods Folly River	15-25-1-(1)	SR 1501	1996
IB98	Royal Oak Swamp	15-25-1-12b	NC 211	2006
IB99	Shalotte River	15-25-2-(1)	US 17	2003

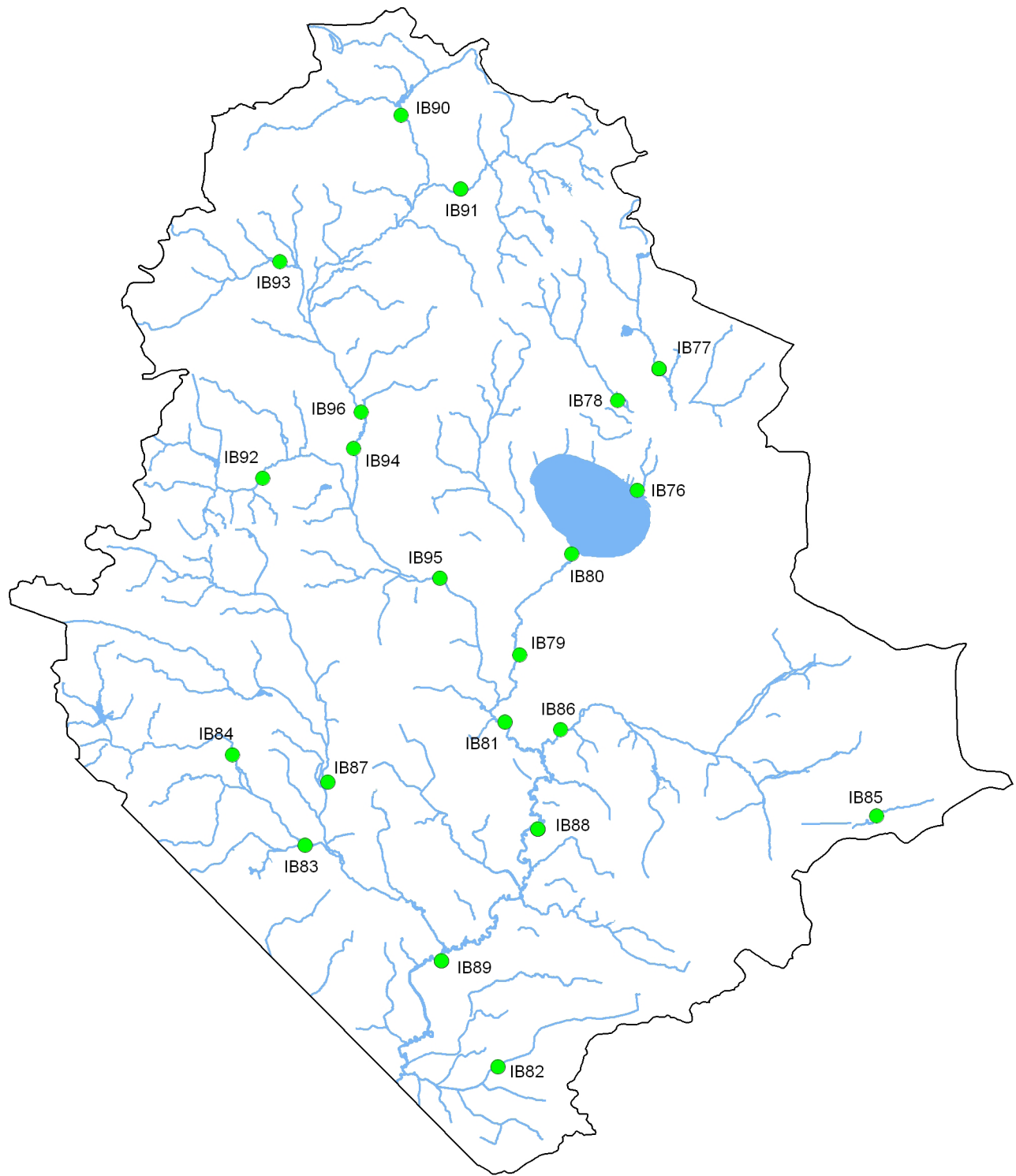
Benthic Macroinvertebrate Sampling Sites in the Lumber River Subbasin



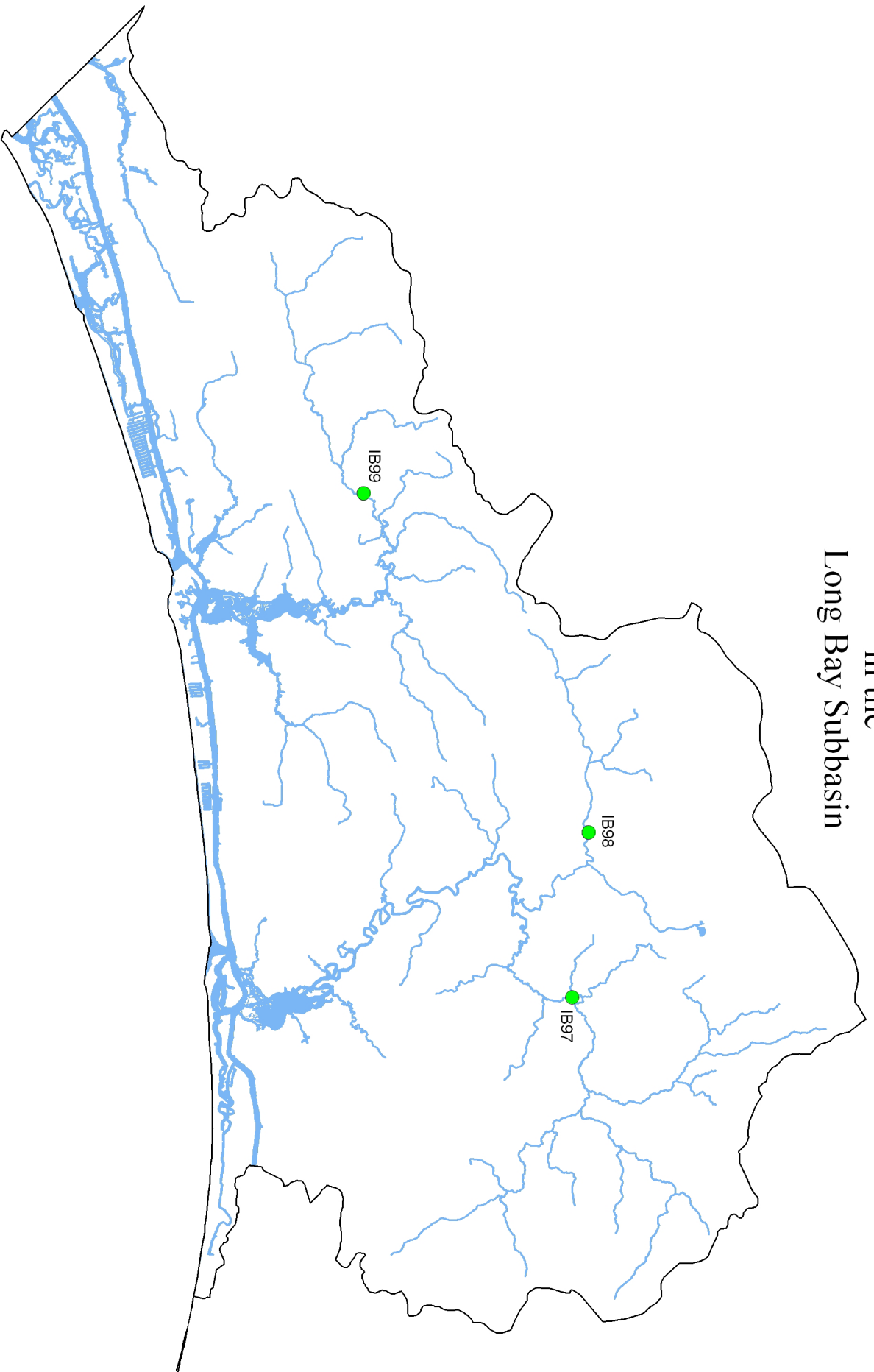
Benthic Macroinvertebrate Sampling Sites in the Little Pee Dee Subbasin



Benthic Macroinvertebrate Sampling Sites in the Waccamaw Subbasin



Benthic Macroinvertebrate Sampling Sites
in the
Long Bay Subbasin



SITE ID	1983	1984	1985	1986	1987	1988	1989	1990	1991	1992	1994	1996	1997	1998	1999	2001	2003	2004	2005	2006
IB1					G															
IB2					G															
IB3		G																		
IB4			E			E	E		E			E				E				E
IB5																				E
IB6									E			E				G				E
IB7							G-F					E				G				G
IB8		G	G					E												
IB9																NR				
IB10	E	E	E	E			E	E	E			E				E				E
IB11								E												
IB12		NR					NR							NR						
IB13		G					G													
IB14								E												
IB15		E		E																
IB16																				NR
IB17		G		G																
IB18																NR				N
IB19									G-F											
IB20																		G-F		
IB21												N				N				M
IB22												M				M				M
IB23																N				N
IB24			G-F																	
IB25												E				E				E
IB26			E	E		E		G	G		G	E				E				
IB27			G-F	P								G-F				G-F				G-F
IB28									G											
IB29									E			E								
IB30				G-F																
IB31	E		E	E		E		E	E			E				E				E
IB32			E																	
IB33			E																	
IB34				E																
IB35			E	E					E		E	E				E				E

SITE ID	1983	1984	1985	1986	1987	1988	1989	1990	1991	1992	1994	1996	1997	1998	1999	2001	2003	2004	2005	2006
IB36			G	E																
IB37			G-F																	
IB38			G	G					E											
IB39				G		G			G			G				E				G
IB40																		F		
IB41																		G-F		
IB42									NR	NR		M				M				S
IB43																		NR		
IB44						G-F			G-F											
IB45						G-F														
IB46																M				S
IB47																N				N
IB48																				M
IB49										NR										
IB50										NR										
IB51									NR							N				N
IB52									G-F			G-F								
IB53									G-F											
IB54									G											
IB55										NR										
IB56																N				N
IB57																				M
IB58									NR			N				N				M
IB59				NR																
IB60																				M
IB61									NR			N				N				M
IB62										NR										
IB63									E			G				G				
IB64								G-F												
IB65								G-F												
IB66																				G-F
IB67									G-F			G-F				G				
IB68																			NR	NR
IB69		G		G																
IB70												G-F				G-F				G-F

SITE ID	1983	1984	1985	1986	1987	1988	1989	1990	1991	1992	1994	1996	1997	1998	1999	2001	2003	2004	2005	2006
IB71									G-F											M
IB72			G		E			E	G			E				G				G
IB73								G												
IB74								G-F												
IB75																			NR	
IB76									NR											
IB77												N	N	N	N	N				N
IB78												M								
IB79									G											
IB80									G-F											
IB81									E							G				
IB82												NR		NR						
IB83																M				M
IB84									NR											
IB85									NR											
IB86									NR											
IB87									NR											
IB88		G-F			G-F			G-F	G				G-F			G				
IB89	F								G-F							G				
IB90												S								
IB91												M				M				M
IB92										NR										
IB93																				M
IB94											NR									
IB95																M				M
IB96											NR									
IB97		P										G-F								
IB98												NR		N	N	N				N
IB99	G-F								G-F			G-F				F	G-F			
IB100							G													
IB101																M				
IB102																				N

E=Excellent G=Good G-F=Good-Fair F=Fair P=Poor NR=Not Rated N=Natural M=Moderate S=Severe