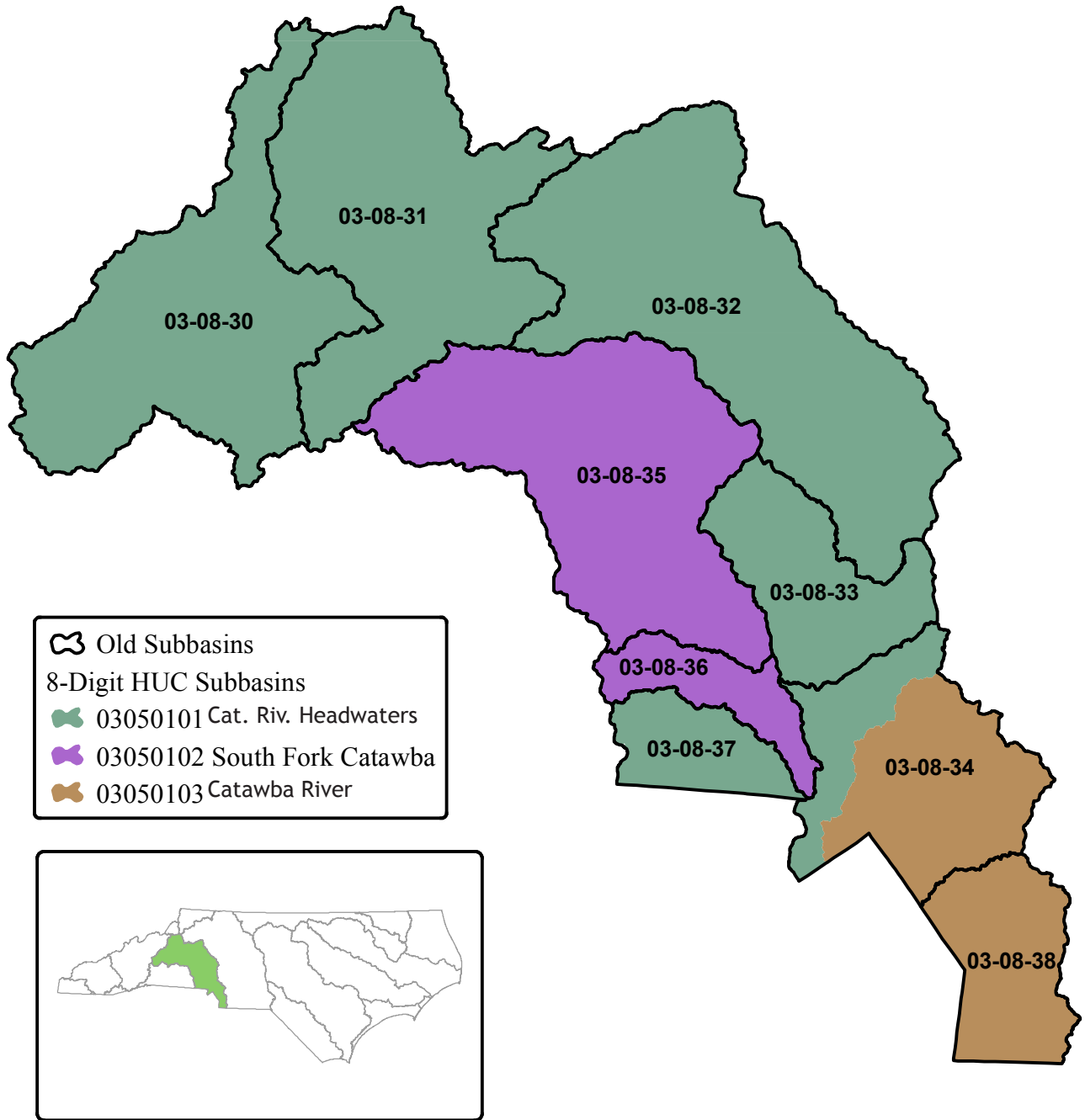


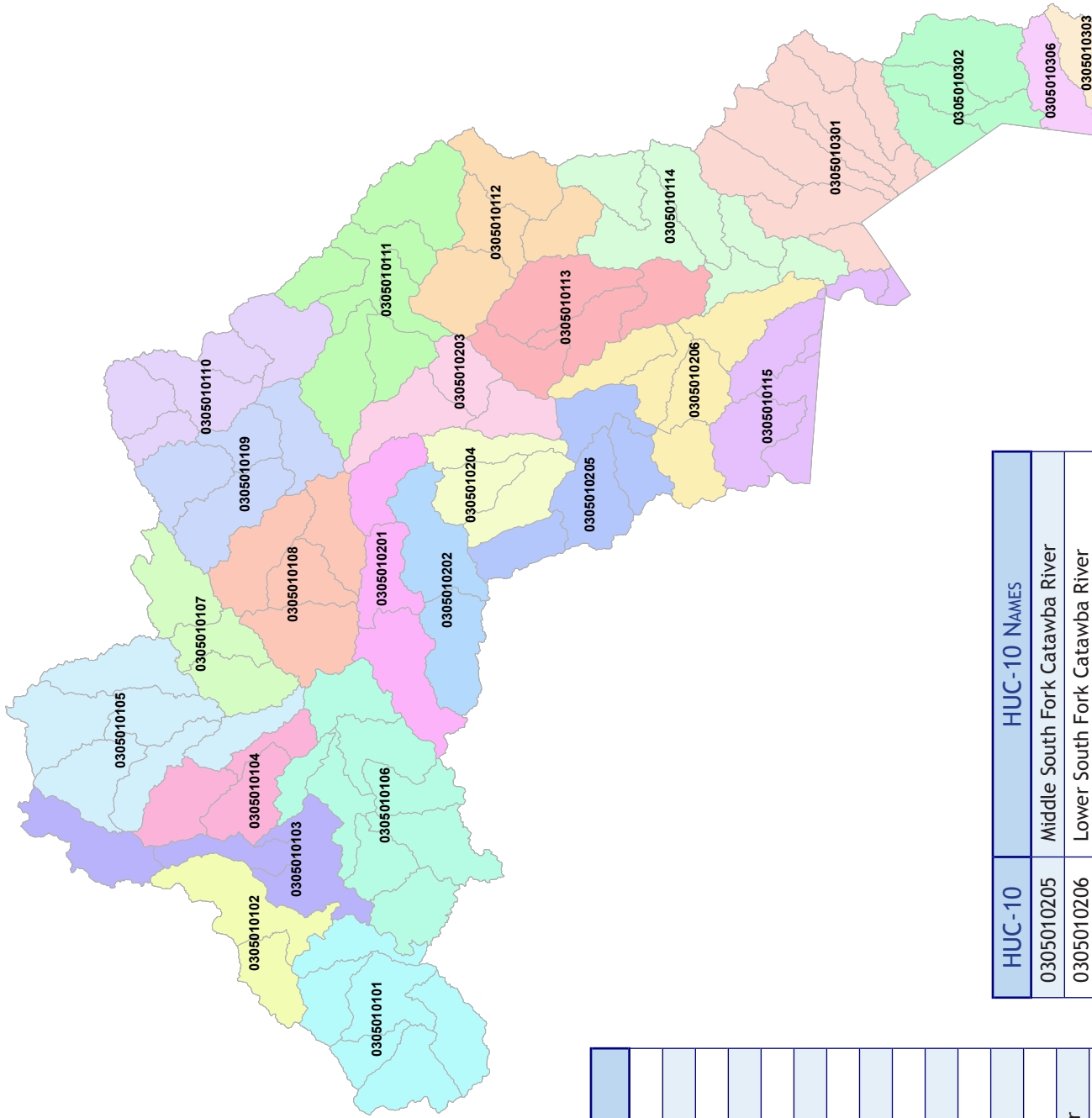
CHAPTER 11

CATAWBA RIVER BASINWIDE MAPS

Catawba Basin Conversion from Old DWQ Subbasins to 8-Digit HUC Subbasins



Catawba River Basin 10 and 12 Digit HUCs

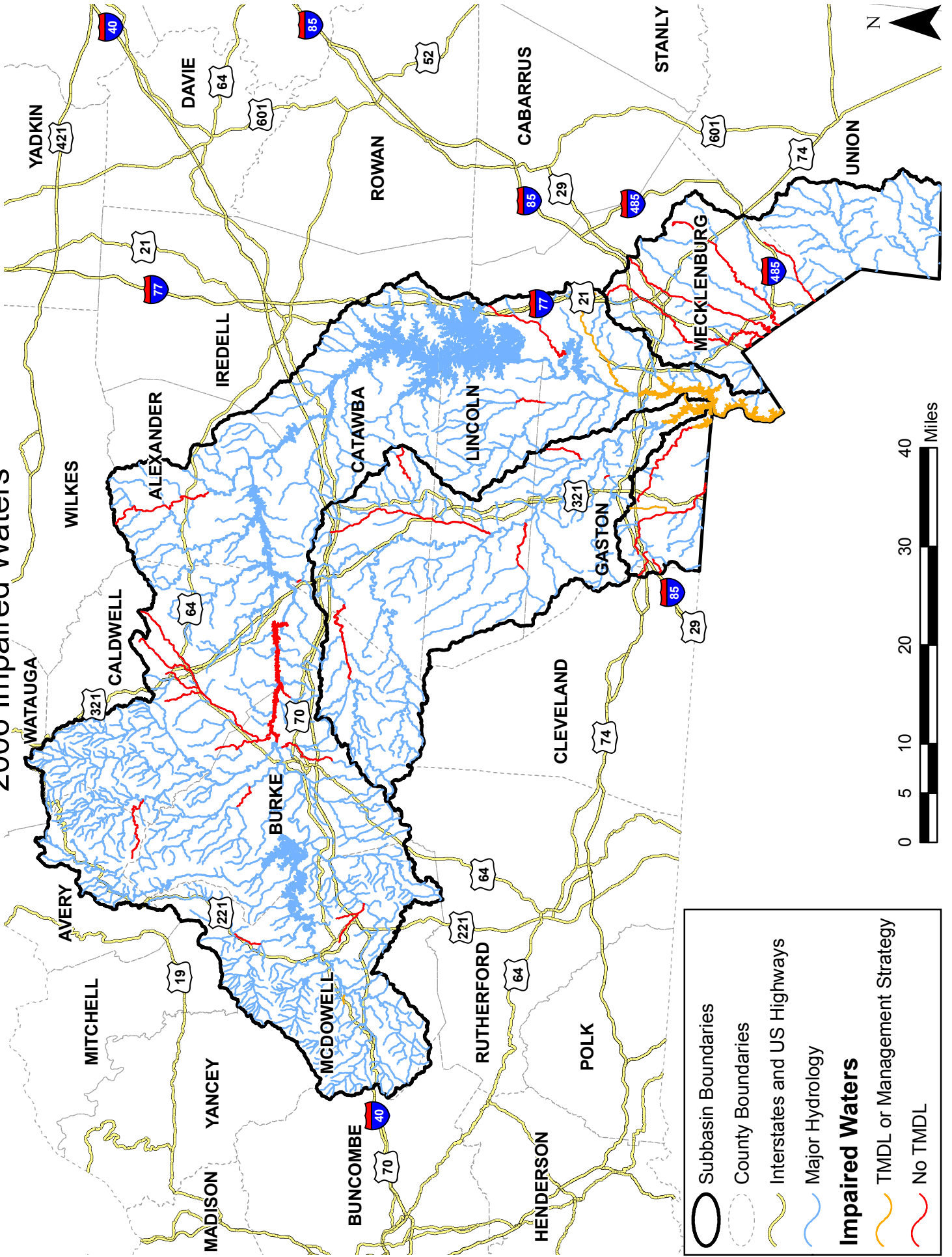


| HUC-10 | HUC-10 NAMES |
|------------|------------------------------------|
| 0305010101 | Headwaters Catawba River |
| 0305010102 | North Fork Catawba River |
| 0305010103 | Linville River-Lake James |
| 0305010104 | Warrior Fork-Catawba River |
| 0305010105 | Johns River |
| 0305010106 | Silver Creek-Catawba River |
| 0305010107 | Lower Creek |
| 0305010108 | Rhodhiss Lake-Catawba River |
| 0305010109 | Lake Hickory-Catawba River |
| 0305010110 | Lookout Shoals Lake-Catawba River |
| 0305010111 | Upper Lake Norman |
| 0305010112 | Lower Lake Norman |
| 0305010113 | Dutchmans Creek |
| 0305010114 | Mountain Island Lake-Catawba River |
| 0305010115 | Lake Wylie-Catawba River |
| 0305010201 | Henry Fork |
| 0305010202 | Jacob Fork |
| 0305010203 | Clark Creek |
| 0305010204 | Upper South Fork Catawba River |

| HUC-10 | HUC-10 NAMES |
|------------|---------------------------------------|
| 0305010205 | Middle South Fork Catawba River |
| 0305010206 | Lower South Fork Catawba River |
| 0305010301 | Sugar Creek |
| 0305010302 | Twelvemile Creek |
| 0305010303 | Cane Creek |
| 0305010306 | Fishing Creek Reservoir-Catawba River |

2004 IR Map
Coming Soon

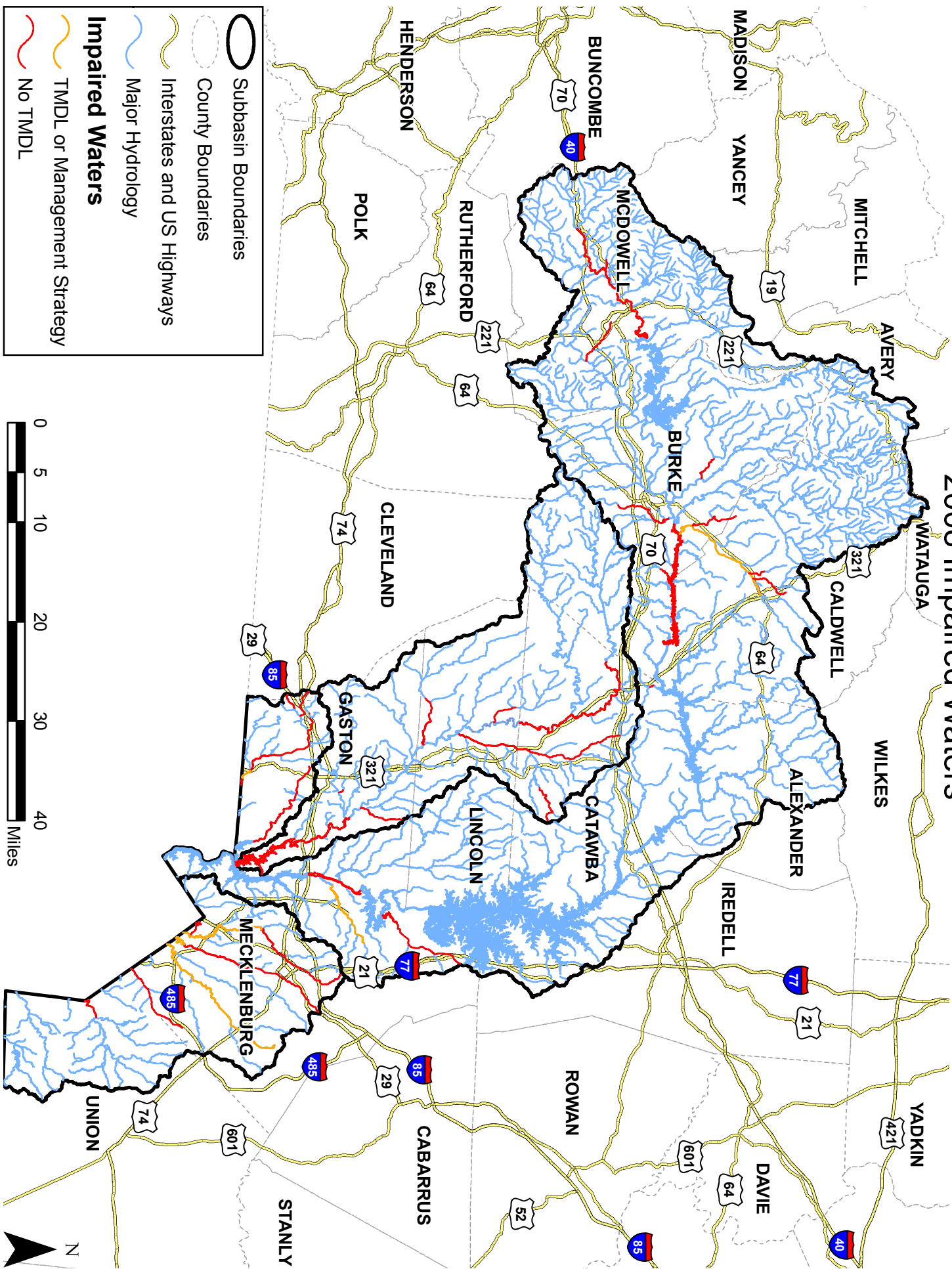
2006 Impaired Waters



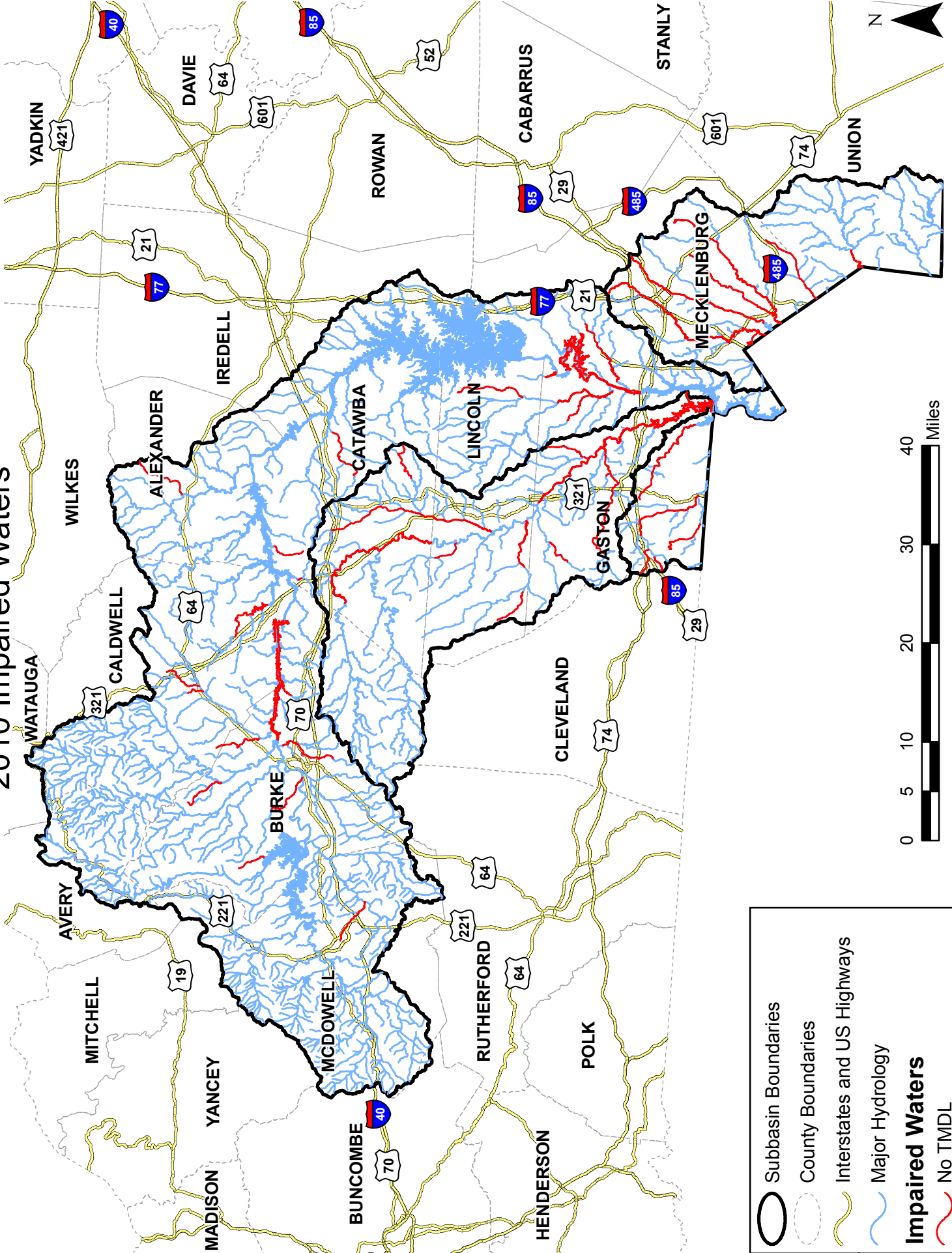
Legend

- Subbasin Boundaries
- County Boundaries
- Interstates and US Highways
- Major Hydrology
- Impaired Waters**
- TMDL or Management Strategy
- No TMDL

2008 Impaired Waters



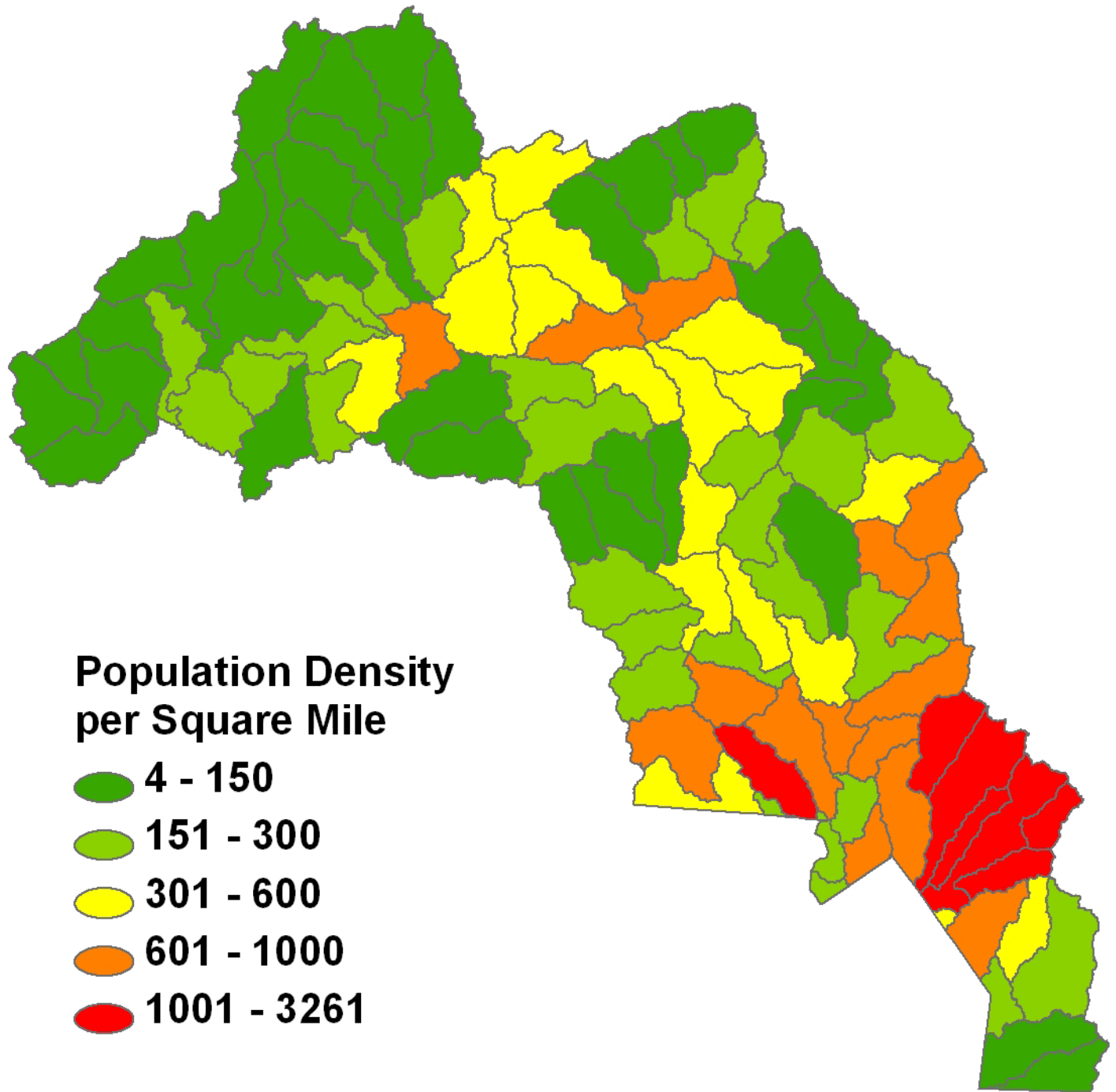
2010 Impaired Waters



| | |
|--|-----------------------------|
| | Subbasin Boundaries |
| | County Boundaries |
| | Interstates and US Highways |
| | Major Hydrology |
| | Impaired Waters |
| | No TMDL |



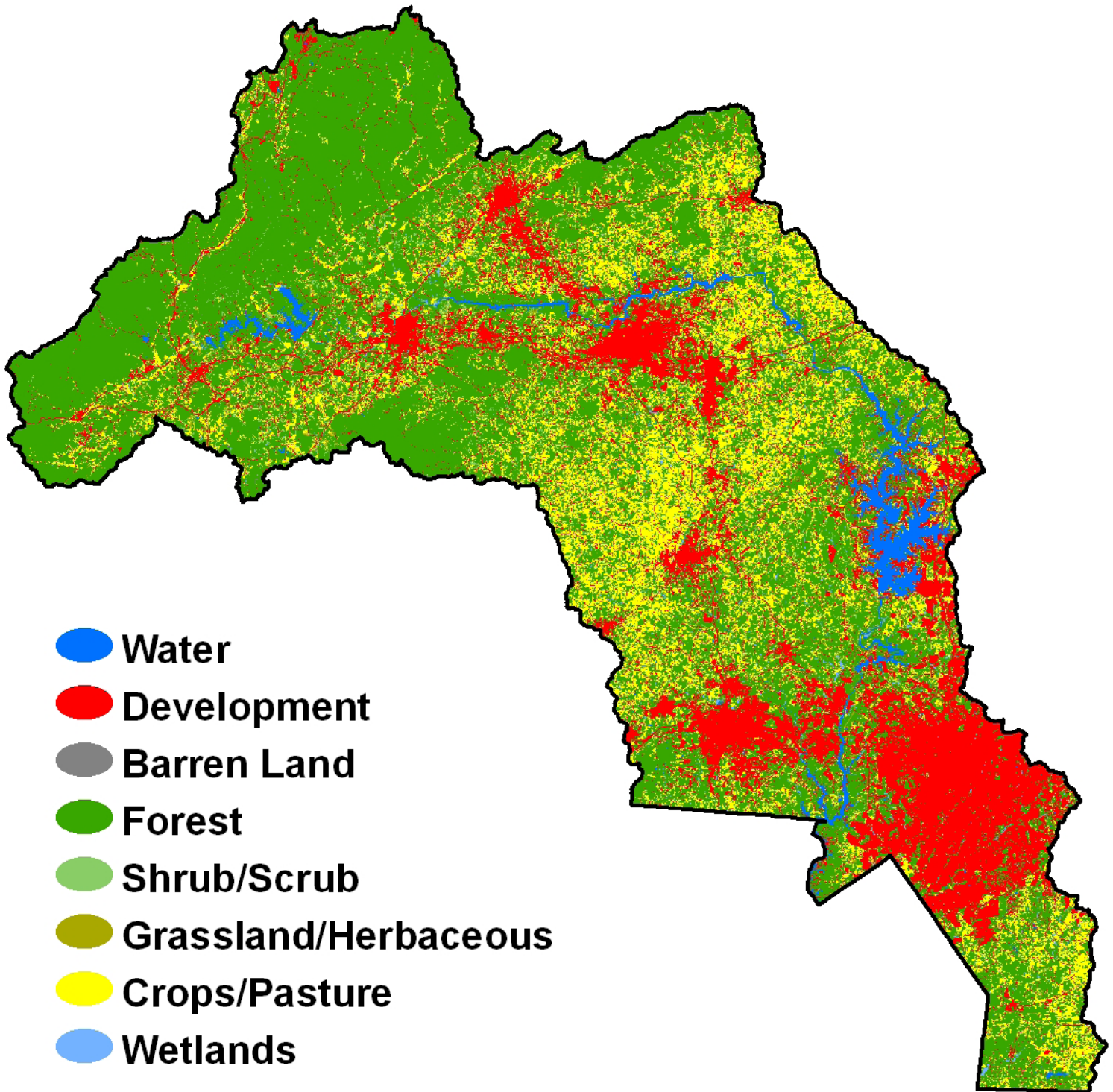
POPULATION DENSITY FOR THE CATAWBA RIVER BASIN BASED ON 2000 US CENSUS



Data Reference:

Pate, Travis. 2009. *Watershed Assessment in North Carolina: Building a Watershed Database with Population, Land Cover, and Impervious Cover Information*. Master Theses, University of North Carolina at Chapel Hill.

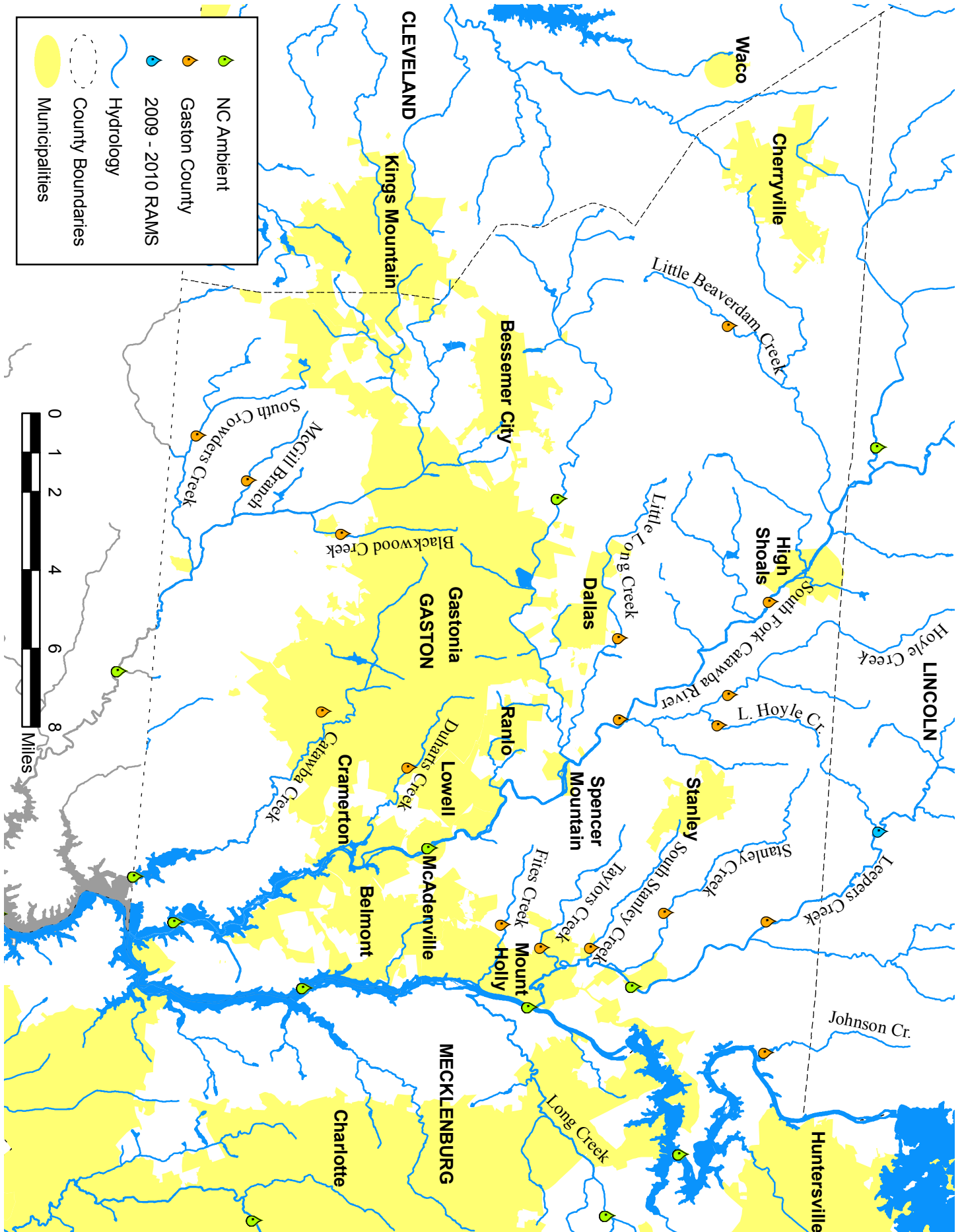
LAND COVER FOR THE CATAWBA RIVER BASIN BASED ON 2001 DATA



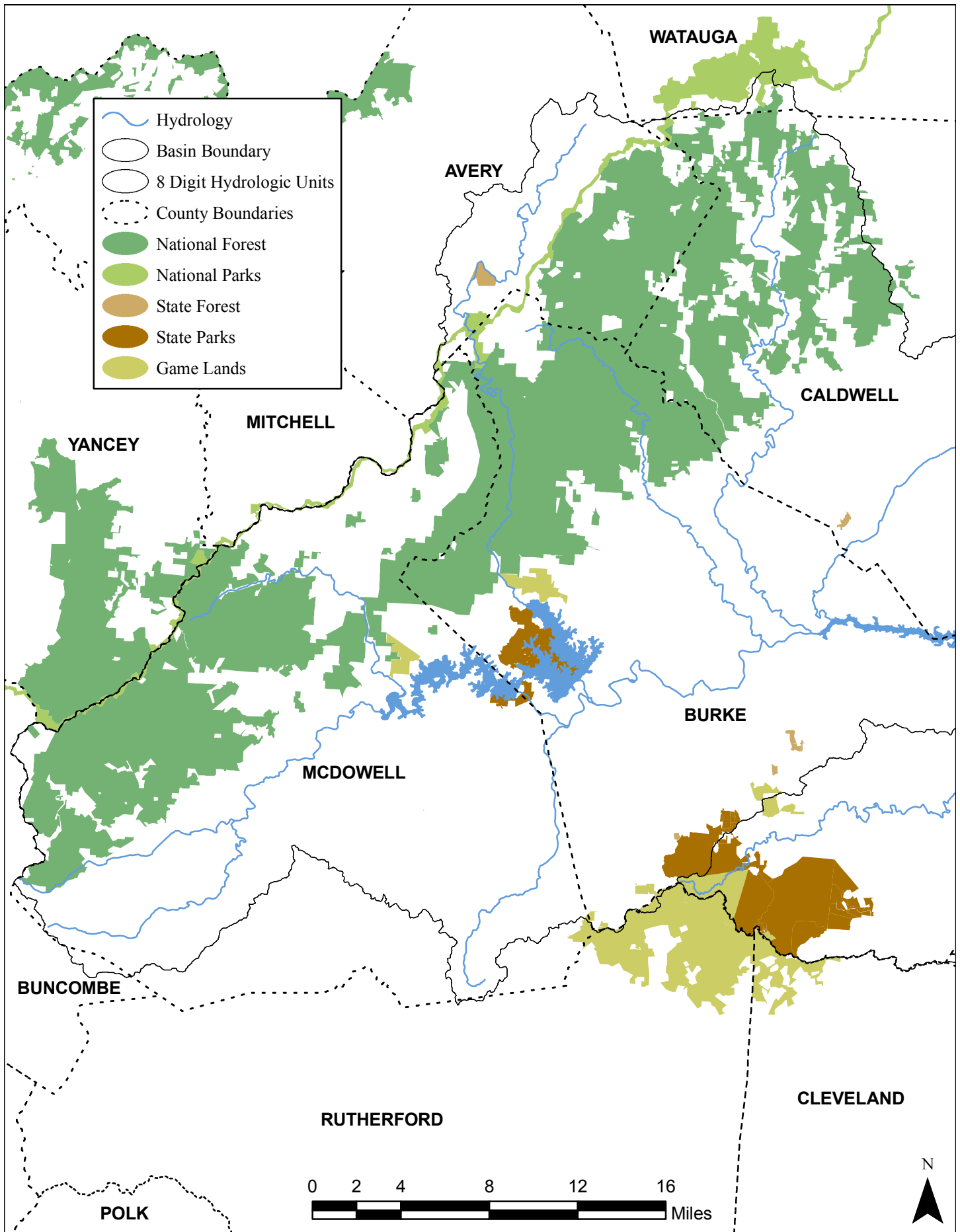
Data Reference:

Homer, C., C. Huang, L. Yang, B. Wylie and M. Coan, 2004. *Development of a 2001 National Land Cover Database for the United States*. Photogrammetric Engineering and Remote Sensing Vol.70, No.7, pp 829-840. www.mrlc.gov.

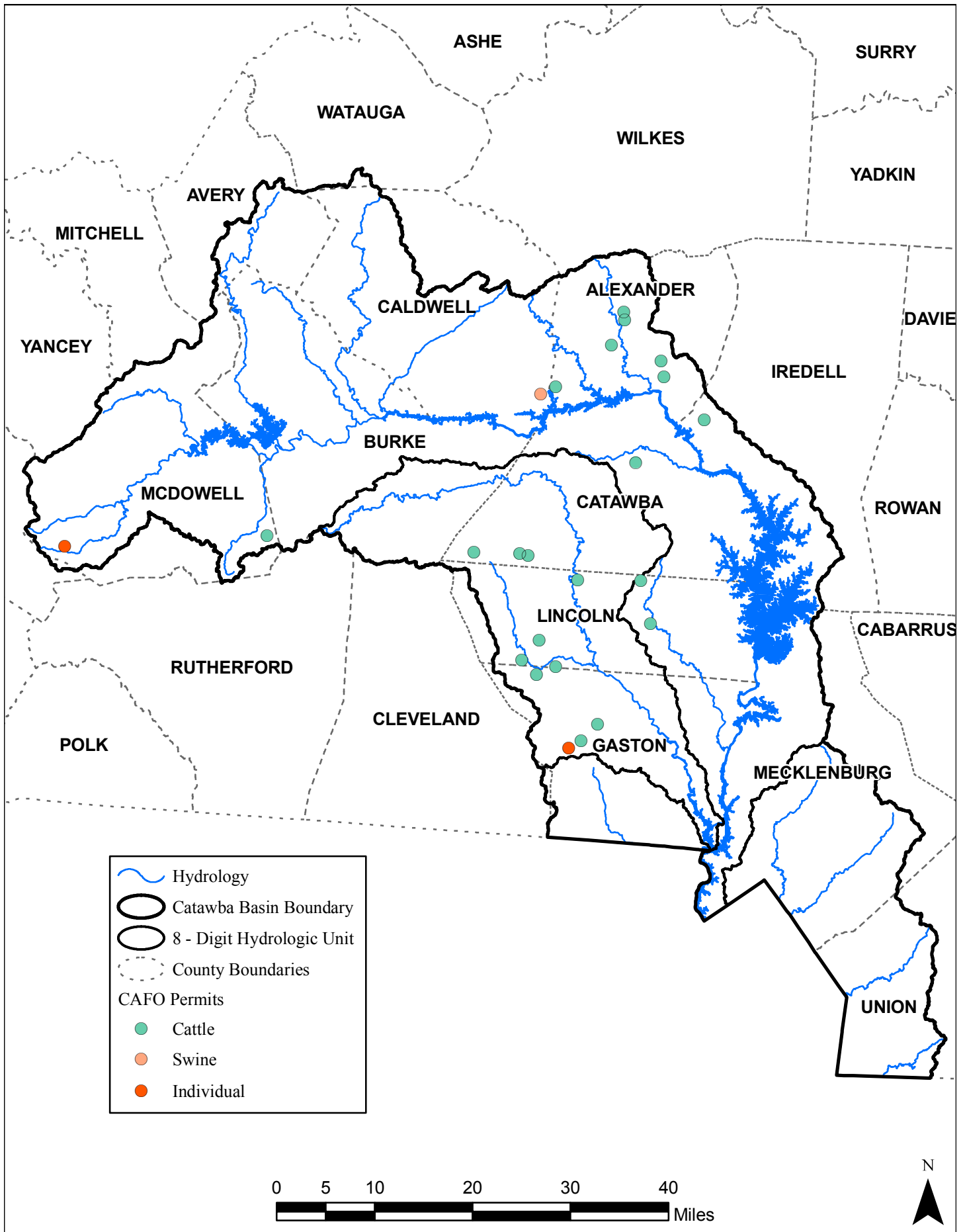
GASTON COUNTY AMBIENT MONITORING SAMPLING LOCATIONS



NATIONAL & STATE PARKS/FORESTS & GAME LAND LOCATED WITHIN THE CATAWBA RIVER BASIN



PERMITTED ANIMAL OPERATIONS LOCATED IN THE CATAWBA RIVER BASIN AS OF 2008



NON-DISCHARGE PERMITS BY TYPE IN THE CATAWBA RIVER BASIN BETWEEN 2003-2009

