

PERMITS

IN THE NEW RIVER BASIN

PERMITS LISTED

- 🔹 NPDES: Point Source Discharge
- 🔹 NPDES: Non-Discharge
- 🔹 Stormwater
- 🔹 Animal Operations

NPDES PERMITS

TABLE 14-1: NPDES POINT SOURCE DISCHARGER PERMITS IN THE NEW RIVER BASIN

| PERMIT # | FACILITY NAME | PERMIT TYPE | CLASS | RECEIVING STREAM | PERMITTED FLOW (GPD) |
|--|---|---|--------------------|------------------------------|----------------------|
| North Fork New River Watershed (HUC 0505000101) | | | | | |
| NC0000019 | United Chemi-Con, Inc. | Industrial Process & Commercial | Minor | North Fork New River | 38,000 |
| NC0020451* | West Jefferson WWTP | Municipal, < 1MGD | Major | Little Buffalo Creek | 500,000 |
| NC0030325 | Buffalo Meadows WWTP | 100% Domestic < 1MGD | Minor | Buffalo Creek | 10,000 |
| NC0066028 | Lansing WWTP | Municipal, < 1MGD | Minor | Big Horse Creek | 50,000 |
| NCG500267 | Elk Creek Lumber | Non-contact Cooling, Boiler Blowdown Wastewater Discharge COC | Minor | Little Buffalo Creek | 0 |
| NCG550478 | 2634 Old Highway 16 | Single Family Domestic Wastewater Discharge COC | Minor | Little Phoenix Creek | 450 |
| South Fork New River & Fox Creek Watersheds (HUC 0505000102 & 0505000103) | | | | | |
| NC0020621* | Jimmy Smith WWTP (Town of Boone) | Municipal, Large | Major | South Fork New River | 4,820,000 |
| NC0021709* | Jefferson WWTP | Municipal, < 1MGD | Major | Naked Creek | 300,000 |
| NC0027286 | Blowing Rock WWTP | Municipal, < 1MGD | Minor | Middle Fork SFNR | 800,000 |
| NC0030848 | Jefferson Apparel Company WWTP | 100% Domestic < 1MGD | Minor | Dog Creek | 8,000 |
| NC0032131 | Tweetsie Railroad | 100% Domestic < 1MGD | Minor | Middle Fork SFNR | 175,000 |
| NC0032158 | Roaring River Chalets | 100% Domestic < 1MGD | Minor | Middle Fork SFNR | 5,000 |
| NC0039608 | Summit Woods Apartments WWTP | 100% Domestic < 1MGD | Minor | Middle Fork SFNR | 8,300 |
| NC0044423 | Appalachian State WTP | Water Treatment Plant | Minor | Norris Branch | not limited |
| NC0067016 | Parkway Elementary School | 100% Domestic < 1MGD | Minor | Laxon Creek | 5,000 |
| NC0083470 | Jefferson WTP | Water Treatment Plant | Minor | Naked Creek | not limited |
| NCG500206 | International Resistive Company | Non-contact Cooling, Boiler Blowdown Wastewater Discharge COC | Minor | Winkler Creek | 0 |
| NCG510152 | Former Shell Dollar Mart #5 | Groundwater Remediation Wastewater Discharge COC | Minor | Gap Creek | 0 |
| NCG550407 | 2684 Boggs Road | Single Family Domestic Wastewater Discharge COC | Minor | South Fork New River | 300 |
| NCG550430 | Riverside Drive / Lot 667 | Single Family Domestic Wastewater Discharge COC | Minor | New River | 300 |
| Little River & Chestnut Creek Watersheds (HUC 0505000104 & 0505000106) | | | | | |
| NC0026913 ¹ | Sparta WWTP | Municipal, < 1MGD | Minor ¹ | Little River | 600,000 |
| NC0078158 | Olde Beau Golf Club WWTP | 100% Domestic < 1MGD | Minor | Laurel Branch (Laurel Creek) | 20,000 |
| NC0084832 | Nikolas' Restaurant & High Meadow Inn LLC | 100% Domestic < 1MGD | Minor | Laurel Branch (Laurel Creek) | 25,000 |

¹ The Sparta WWTPs Pretreatment Program became inactive in January 2011 when it also became a Minor permit. Even though tables and maps have been changed to reflect the new status, the facility was considered Major during this planning cycle.

TABLE 14-2: NPDES NON-DISCHARGER PERMITS IN THE NEW RIVER BASIN

| PERMIT # | FACILITY NAME | PERMIT TYPE | CLASS |
|--|---|---|-------|
| North Fork New River Watershed (HUC 0505000101) | | | |
| WQ0007149 | United Chemi-Con Inc. | Wastewater Recycling | Minor |
| South Fork New River & Fox Creek Watersheds (HUC 0505000102 & 0505000103) | | | |
| WQ0004166 | Town of Jefferson Residuals Land Application Program | Land Application of Residual Solids (503) | Minor |
| WQ0013263 | Town of Boone High Country 5-5-0 Drying Facility and Distribution Program | Distribution of Residual Solids (503) | Minor |
| WQ0020293 | Jimmy Smith WWTP (Town of Boone) | Gravity Sewer Extension, Pump Stations, & Pressure Sewer Extensions | Minor |
| WQ0022120 | Jefferson WWTP | Reuse | Minor |
| WQ0022155 | Jefferson WWTP | Distribution of Residual Solids (503) | Minor |
| WQ0021731 | Wastewater Reuse System | Reuse | Minor |
| WQ0010878 | West Campus | Surface Irrigation | Major |
| WQ0012694 | Maharishi Spiritual CT-East Campus | Surface Irrigation | Major |
| WQ0015515 | Heavenly Mountain Resort | Surface Irrigation | Major |
| Little River & Chestnut Creek Watersheds (HUC 0505000104 & 0505000106) | | | |
| WQ0006242 | Town of Sparta Residuals Land Application Site | Residuals | Minor |

* Permits from the two previous tables are mapped on the NPDES Permits map found in the [Maps Chapter](#).

STORMWATER PERMITS

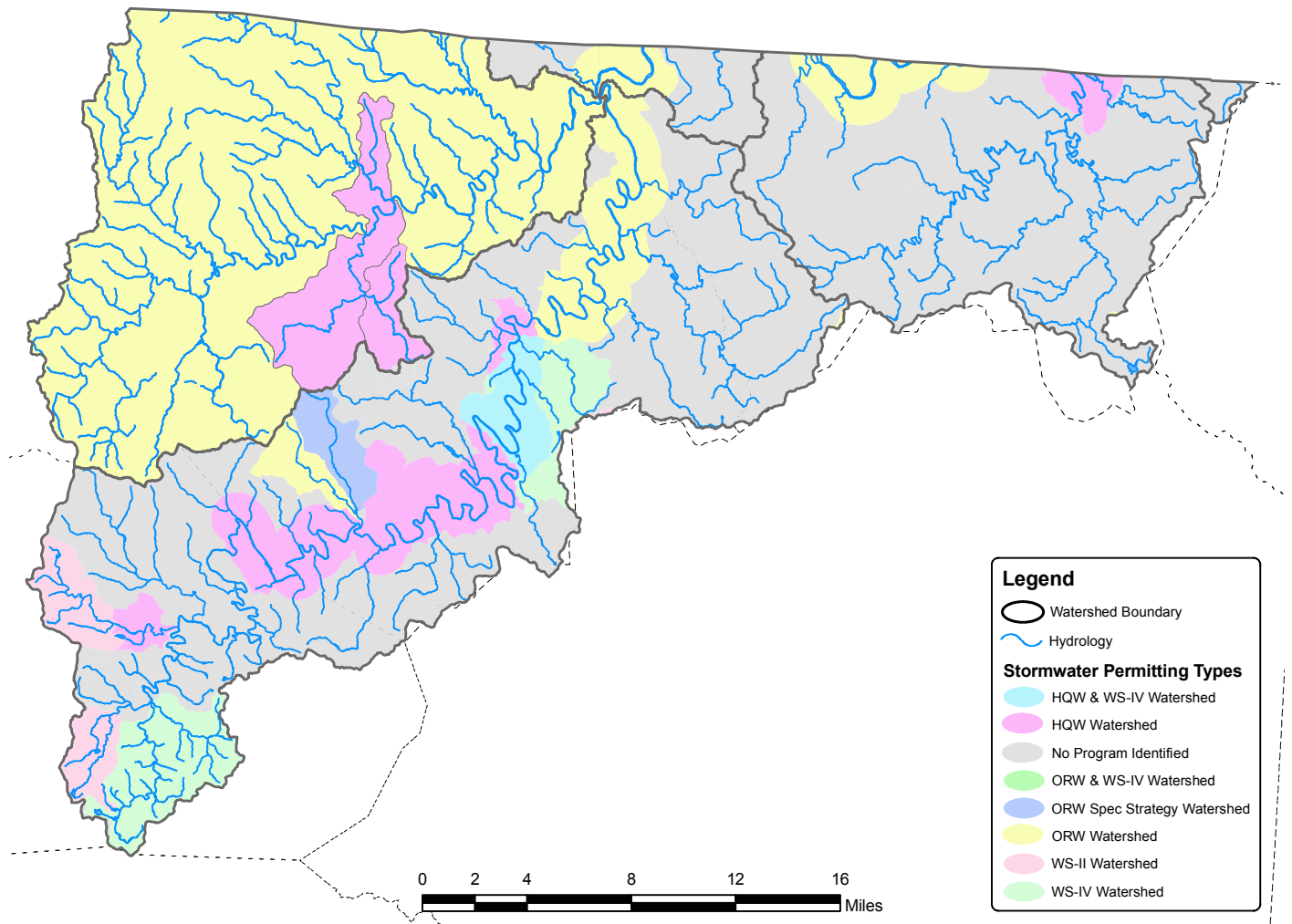
TABLE 14-3: COMMUNITIES IN THE NEW RIVER BASIN SUBJECT TO STORMWATER AND/OR WATER SUPPLY WATERSHED STORMWATER REQUIREMENTS.

| LOCAL GOVERNMENT | NPDES | | STATE STORMWATER PROGRAM | WATER SUPPLY WATERSHED STORMWATER REQUIREMENTS |
|-----------------------|---------|----------|--------------------------|--|
| | PHASE I | PHASE II | | |
| Municipalities | | | | |
| Boone | | | | |
| Blowing Rock | | | | |
| Jefferson | | | | |
| West Jefferson | | | | |
| Lansing | | | | |
| Sparta | | | | |
| Counties | | | | |
| Ashe | | | | |
| Alleghany | | | | |
| Watauga | | | | |

TABLE 14-4: STORMWATER PERMITS IN THE NEW RIVER BASIN

| PERMIT # | FACILITY NAME | PERMIT TYPE | CLASS |
|-----------|-------------------------------------|--|-------|
| NCR002037 | Blowing Rock Art and History Museum | Construction Stormwater | Minor |
| NCG140100 | Chandler Concrete - Watauga | Ready Mix Concrete Stormwater/Wastewater Discharge COC | Minor |
| NCGNE0378 | NC Nat Gd- Boone | Stormwater Discharge, No Exposure Certificate | Minor |
| NCG160141 | Maymead Materials Inc - Boone | Asphalt Paving Mixture Stormwater Discharge COC | Minor |
| NCG140101 | Chandler Concrete - Boone | Ready Mix Concrete Stormwater/Wastewater Discharge COC | Minor |
| NCG160039 | Maymead Materials Inc | Asphalt Paving Mixture Stormwater Discharge COC | Minor |
| NCG020129 | Radford Quarries Of Boone Inc | Mining Activities Stormwater Discharge COC | Minor |
| NCG080085 | Appalachian Energy | Transportation w/Vehicle Maintenance/Petroleum Bulk/Oil Water Separator Stormwater Discharge COC | Minor |
| NCG140254 | Boone Ready-Mix Incorporated | Ready Mix Concrete Stormwater/Wastewater Discharge COC | Minor |
| NCG140259 | R H Loven Co Incorporated | Ready Mix Concrete Stormwater/Wastewater Discharge COC | Minor |
| NCR002049 | Appalcart Waste Site | Construction Stormwater | Minor |
| NCG180130 | Watauga Wood Products Incorporated | Furniture and Fixtures Stormwater Discharge COC | Minor |
| NCG140098 | Chandler Concrete - Ashe County | Ready Mix Concrete Stormwater/Wastewater Discharge COC | Minor |
| NCG050182 | Gates Corporation | Apparel/Printing/Paper/Leather/Rubber Stormwater Discharge COC | Minor |
| NCGNE0392 | NC Nat Gd- Jefferson | Stormwater Discharge, No Exposure Certificate | Minor |
| NCG080062 | Independence Oil & LP Gas Inc | Transportation w/Vehicle Maintenance/Petroleum Bulk/Oil Water Separator Stormwater Discharge COC | Minor |
| NCG150003 | Ashe County Airport Authority | Air Transportation Stormwater Discharge COC | Minor |
| NCR000458 | Ashe County Airport Authority | Construction Stormwater | Minor |
| NCG020227 | Smithport Quarry | Mining Activities Stormwater Discharge COC | Minor |
| NCG140281 | Chandler Concrete - Crumpler | Ready Mix Concrete Stormwater/Wastewater Discharge COC | Minor |
| NCG160015 | Adams Construction Company Inc | Asphalt Paving Mixture Stormwater Discharge COC | Minor |
| NCG210273 | L & E Lumber Co Incorporated | Timber Products Stormwater Discharge COC | Minor |
| NCGNE0579 | United Chemi-Con, Inc. | Stormwater Discharge, No Exposure Certificate | Minor |
| NCGNE0149 | Pioneer Eclipse Corporation | Stormwater Discharge, No Exposure Certificate | Minor |
| NCG140099 | Chandler Concrete - Alleghany | Ready Mix Concrete Stormwater/Wastewater Discharge COC | Minor |
| NCG120057 | Ashe County Environmental Ser | Landfill Stormwater Discharge COC | Minor |

FIGURE 14-1: STORMWATER PROGRAM AREAS IN THE NEW RIVER BASIN



ANIMAL OPERATIONS

TABLE 14-5: PERMITTED ANIMAL OPERATIONS IN THE NEW RIVER BASIN AS OF JULY 2010

| PERMIT NUMBER | PERMIT TYPE | COUNTY | ALLOWABLE COUNT | SSLW FACTOR | SSLW ¹ |
|---|------------------|-----------|-----------------|-------------|-------------------|
| Little River & Chestnut Creek Watersheds (HUC 0505000104 & 0505000106) | | | | | |
| AWC030001 | Cattle State COC | Alleghany | 200 | 800 | 160,000 |
| AWC030002 | Cattle State COC | Alleghany | 400 | 1,400 | 560,000 |
| AWC030003 | Cattle State COC | Alleghany | 500 | 1,400 | 700,000 |
| AWC030005 | Cattle State COC | Alleghany | 200 | 1,400 | 280,000 |
| AWC030008 | Cattle State COC | Alleghany | 275 | 1,400 | 385,000 |
| AWC030013 | Cattle State COC | Alleghany | 150 | 1,400 | 210,000 |
| AWC030021 | Cattle State COC | Alleghany | 130 | 1,400 | 182,000 |
| AWC030026 | Cattle State COC | Alleghany | 262 | 1,400 | 366,800 |
| AWC030033 | Cattle State COC | Alleghany | 466 | 800 | 372,800 |
| Total SSLW: | | | | | 3,216,600 |

1 - SSLW: The Steady State Live Weight is in pounds, after a conversion factor (SSLW Factor) has been applied to the number of animals on a farm. Conversion factors come from the US Department of Agriculture, Natural Resource Conservation Service guidelines.

A map of where these permits are located can be found in the [Maps Chapter](#).