

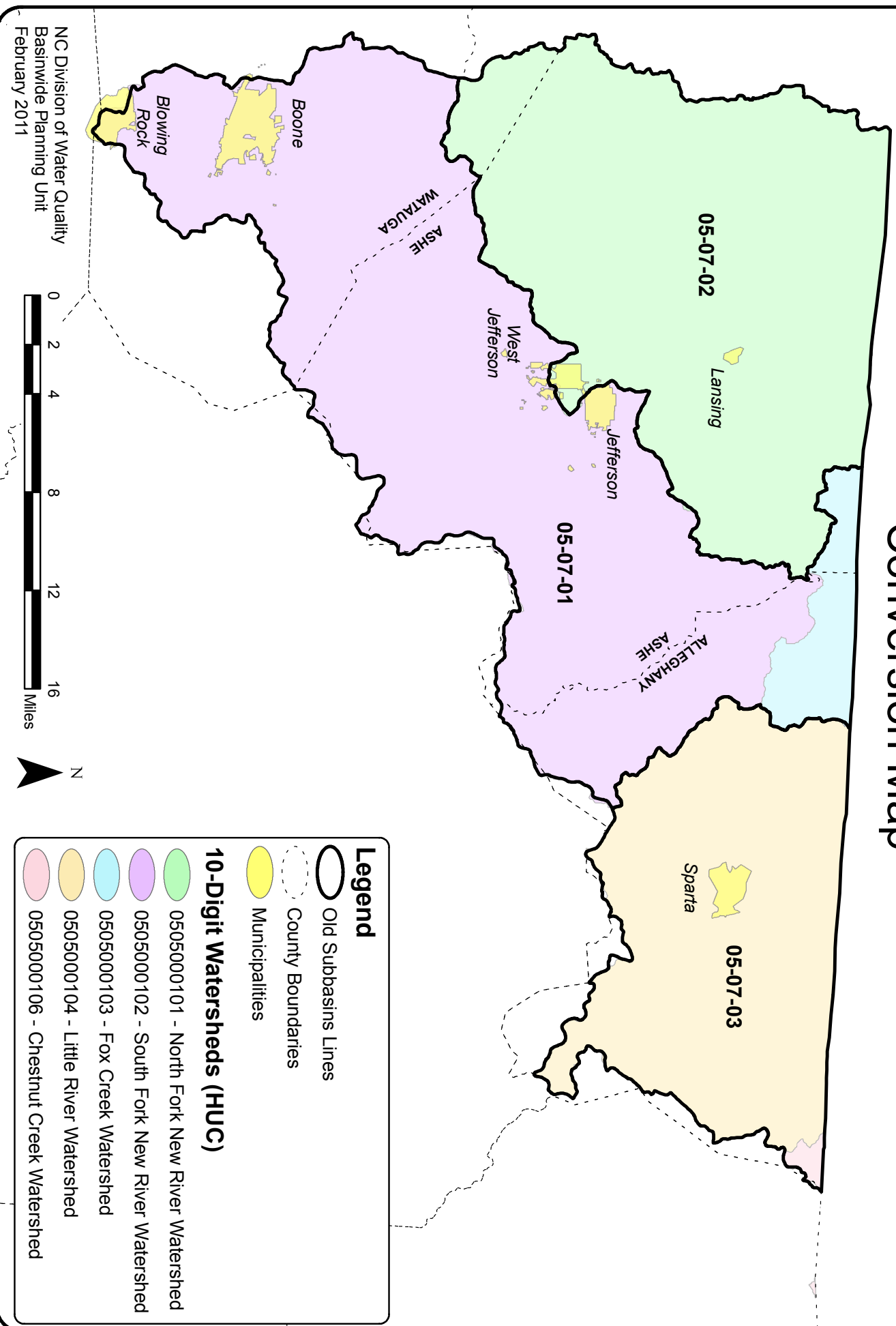
MAPS

IN THE NEW RIVER BASIN

MAPS IN THIS CHAPTER INCLUDE:

- 💧 Old DWQ Subbasins to 10-Digit HUC Conversion Map
- 💧 10-Digit HUC Maps of 12-Digits
 - North Fork New River Watershed (0505000101)
 - South Fork New River & Fox River Watersheds (0505000102 & 0505000103)
 - Little River & Chestnut Creek Watersheds (0505000104 & 0505000106)
- 💧 2004 Impaired Waters Map
- 💧 2006 Impaired Waters Map
- 💧 2008 Impaired Waters Map
- 💧 2010 Impaired Waters Map
- 💧 Designated Trout Waters
- 💧 ORW, HQW & Water Supply Areas
- 💧 2010 Population Density in the New River Basin (coming soon)
- 💧 2001 Land Cover in the New River Basin
- 💧 2006 Land Cover in the New River Basin
- 💧 Agricultural Cost Share Program BMPs (2003-2009)
- 💧 Eco Regions
- 💧 NPDES Discharge Permits (Point Source)
- 💧 NPDES Non-Discharge Permits
- 💧 Animal Operations

Old DWQ Subbasin Lines & New Hydrologic Unit Code Conversion Map



NC Division of Water Quality
 Basinwide Planning Unit
 February 2011

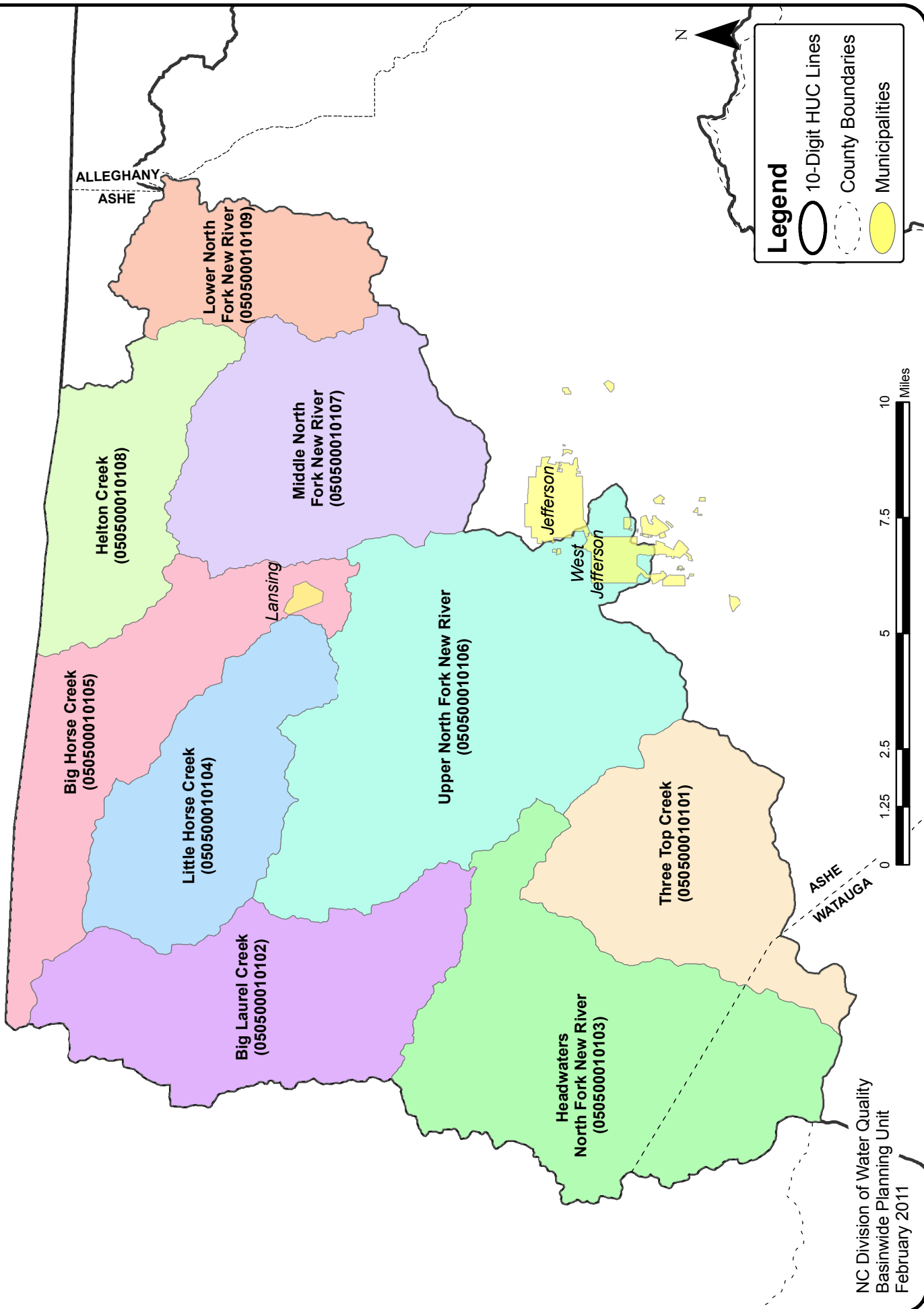
Legend

- Old Subbasins Lines
- County Boundaries
- Municipalities

10-Digit Watersheds (HUC)

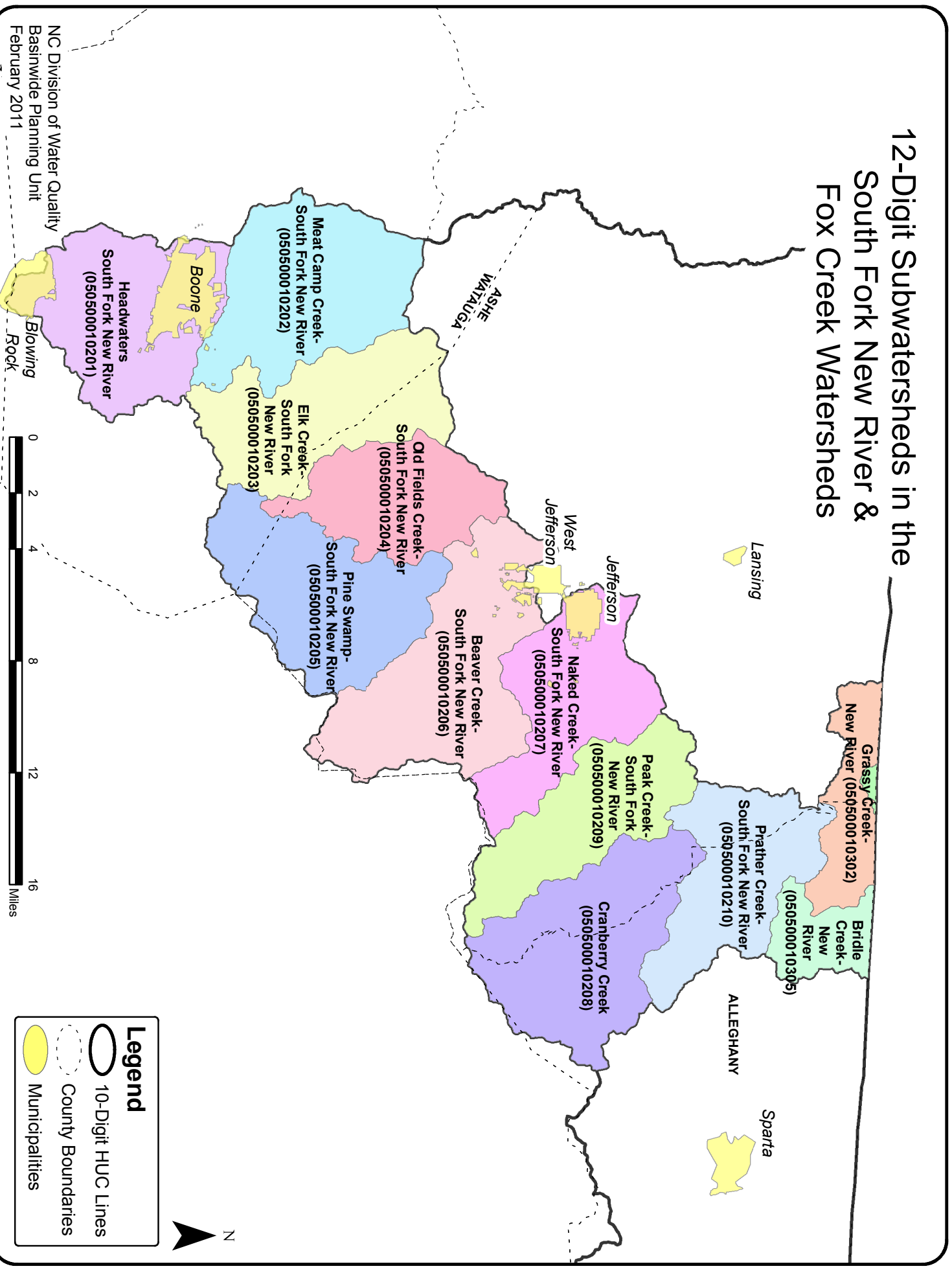
- 0505000101 - North Fork New River Watershed
- 0505000102 - South Fork New River Watershed
- 0505000103 - Fox Creek Watershed
- 0505000104 - Little River Watershed
- 0505000106 - Chestnut Creek Watershed

12-Digit Subwatersheds in the North Fork New River Watershed



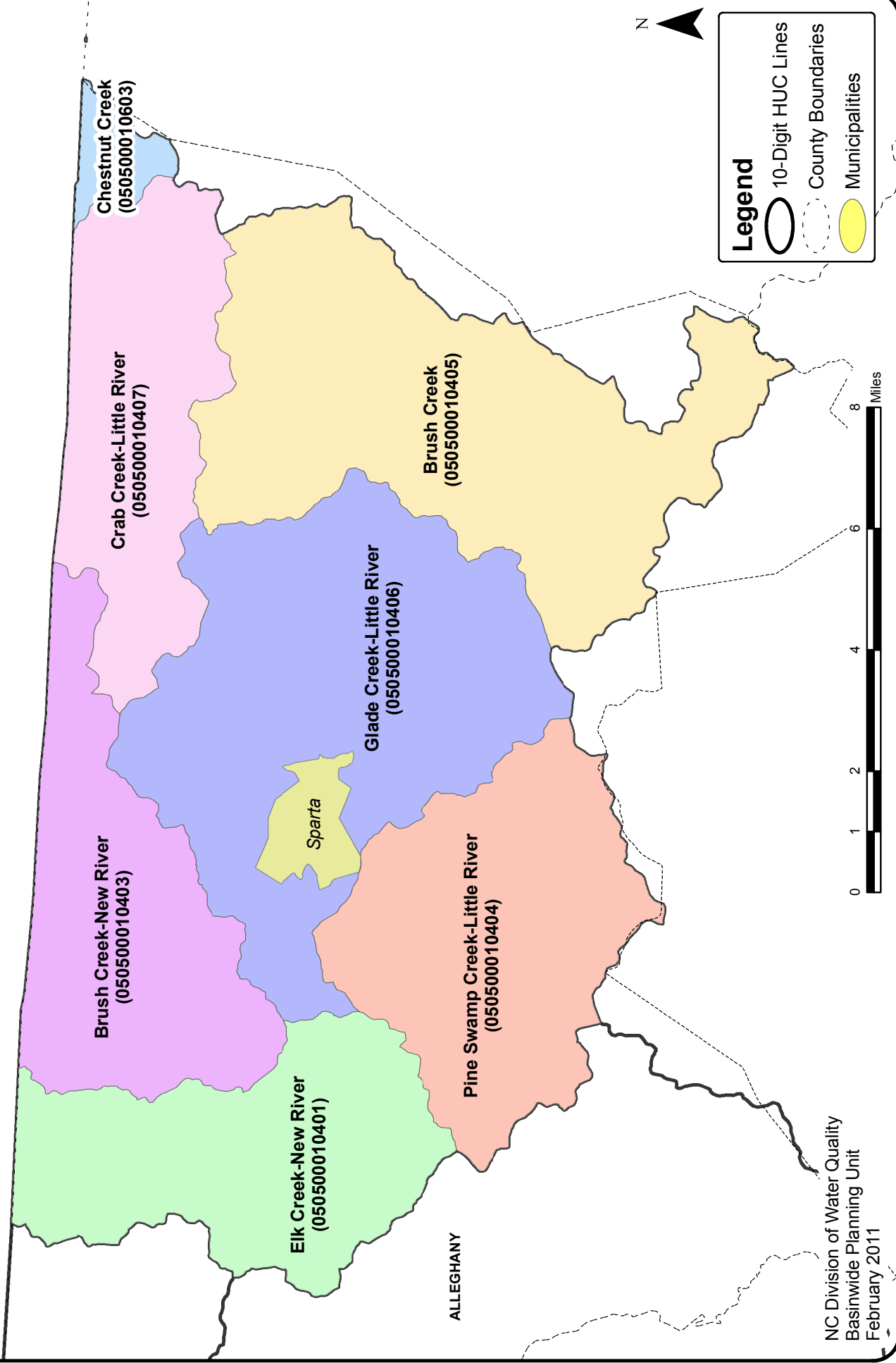
NC Division of Water Quality
Basinwide Planning Unit
February 2011

12-Digit Subwatersheds in the South Fork New River & Fox Creek Watersheds



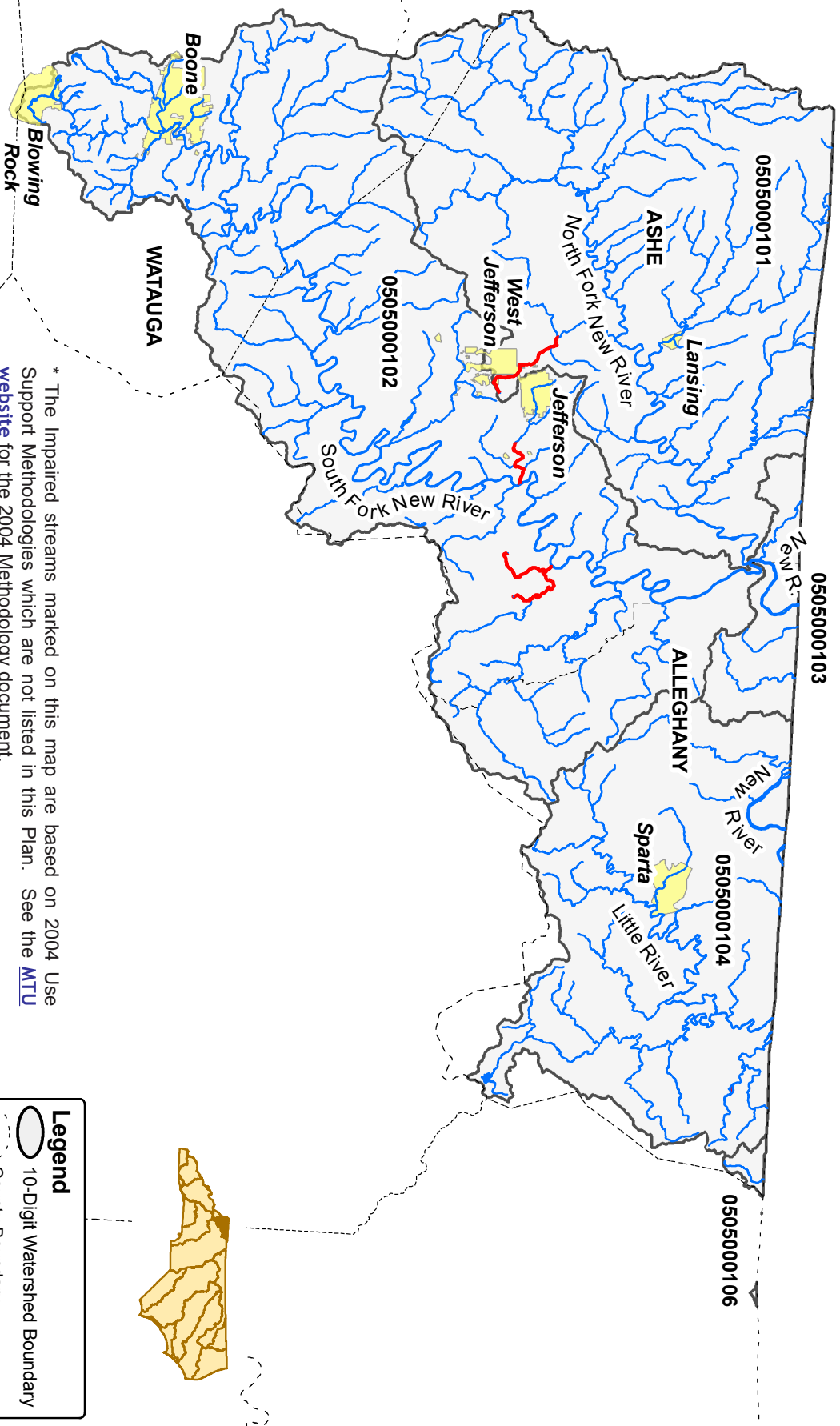
NC Division of Water Quality
 Basinwide Planning Unit
 February 2011

12-Digit Subwatersheds in the Little River & Chestnut Creek Watersheds



NC Division of Water Quality
Basinwide Planning Unit
February 2011

New River Basin 2004 Impaired Waters



* The Impaired streams marked on this map are based on 2004 Support Methodologies which are not listed in this Plan. See the [MTU website](#) for the 2004 Methodology document.

NC Division of Water Quality
Basinwide Planning Unit
January 2011

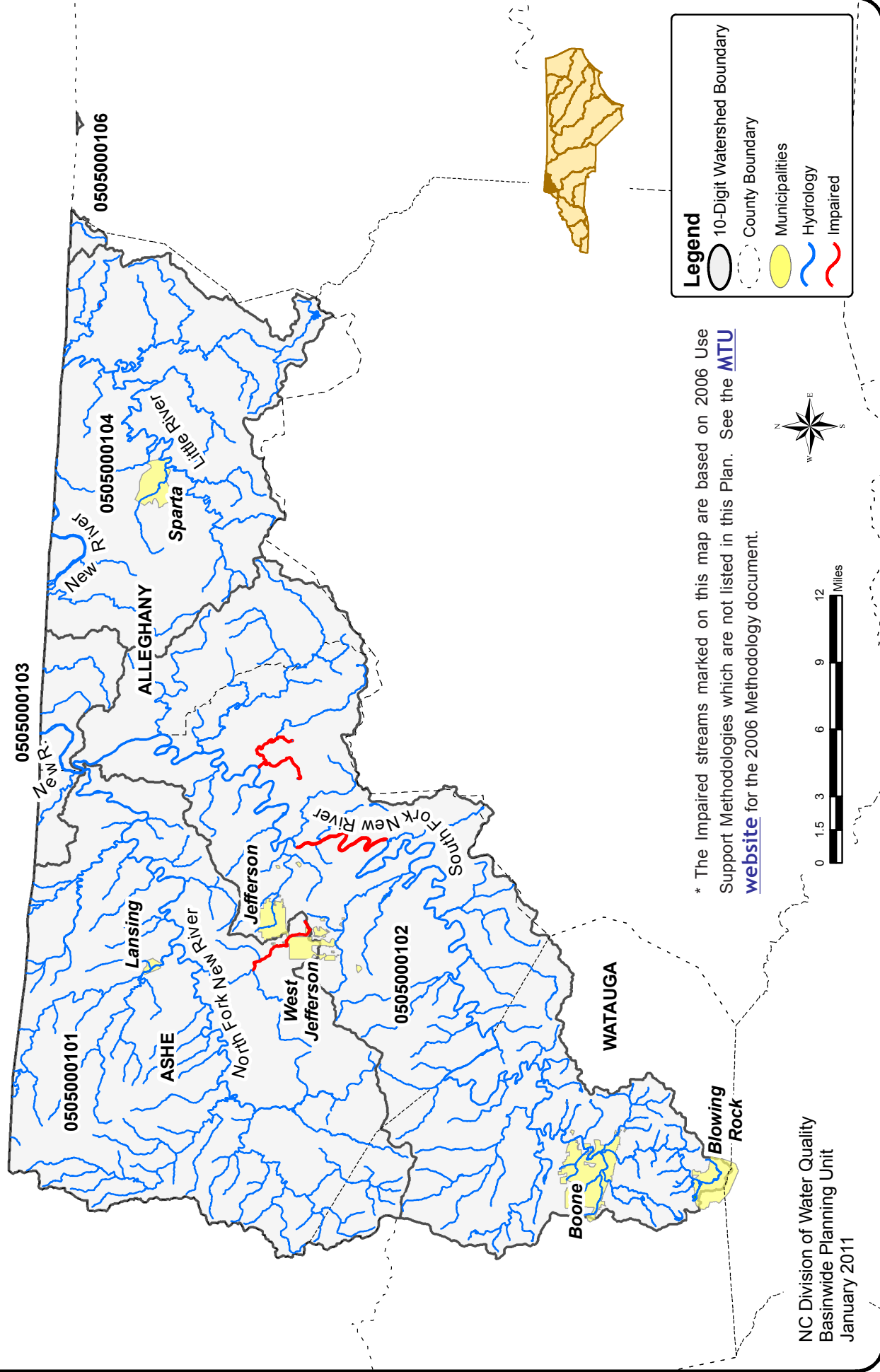


Legend

- 10-Digit Watershed Boundary
- County Boundary
- Municipalities
- Hydrology
- Impaired



New River Basin 2006 Impaired Waters



Legend

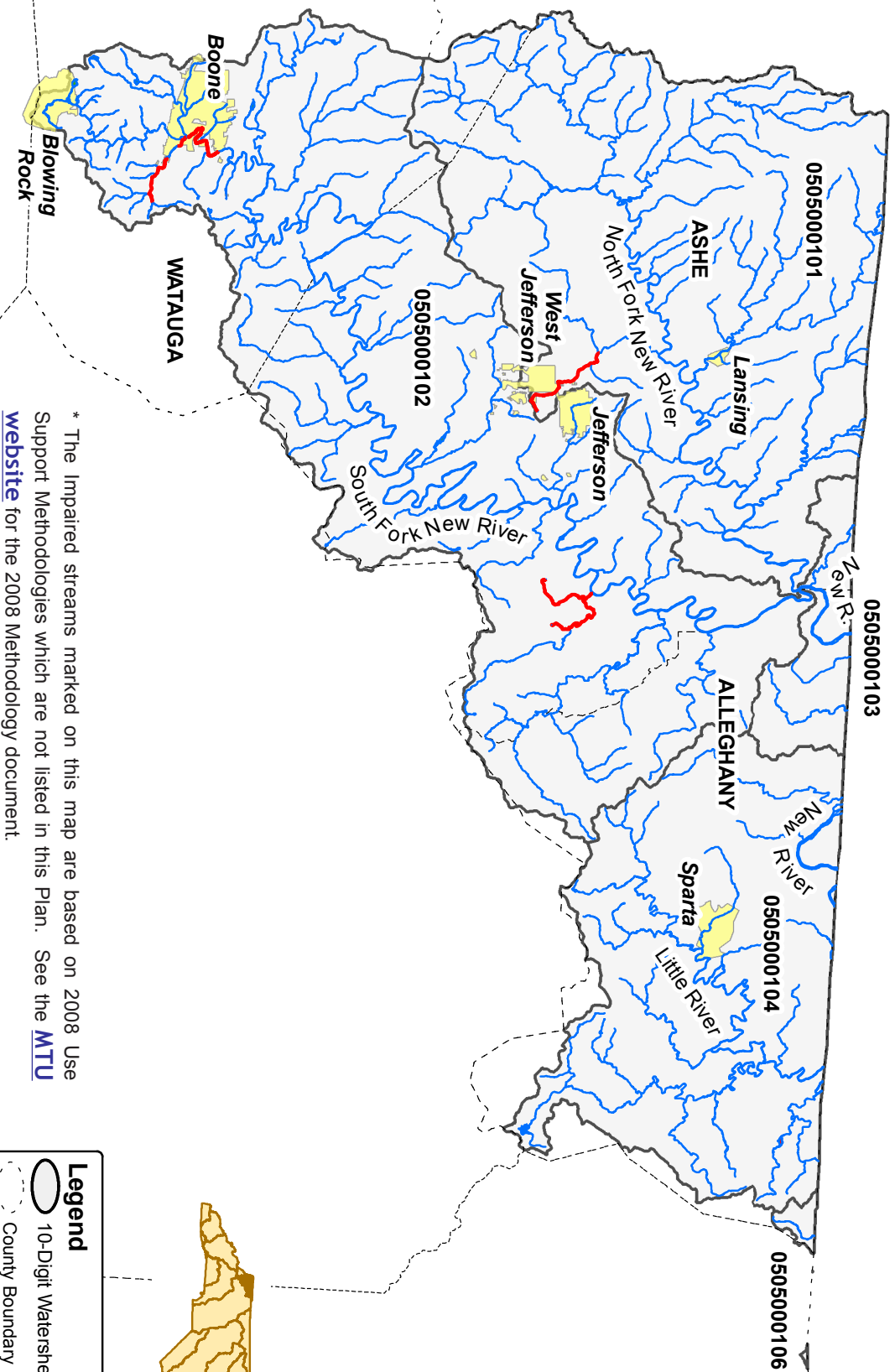
- 10-Digit Watershed Boundary
- County Boundary
- Municipalities
- Hydrology
- Impaired

* The Impaired streams marked on this map are based on 2006 Use Support Methodologies which are not listed in this Plan. See the [MTU website](#) for the 2006 Methodology document.



NC Division of Water Quality
Basinwide Planning Unit
January 2011

New River Basin 2008 Impaired Waters



* The Impaired streams marked on this map are based on 2008 Use Support Methodologies which are not listed in this Plan. See the [MTU website](#) for the 2008 Methodology document.

NC Division of Water Quality
Basinwide Planning Unit
January 2011

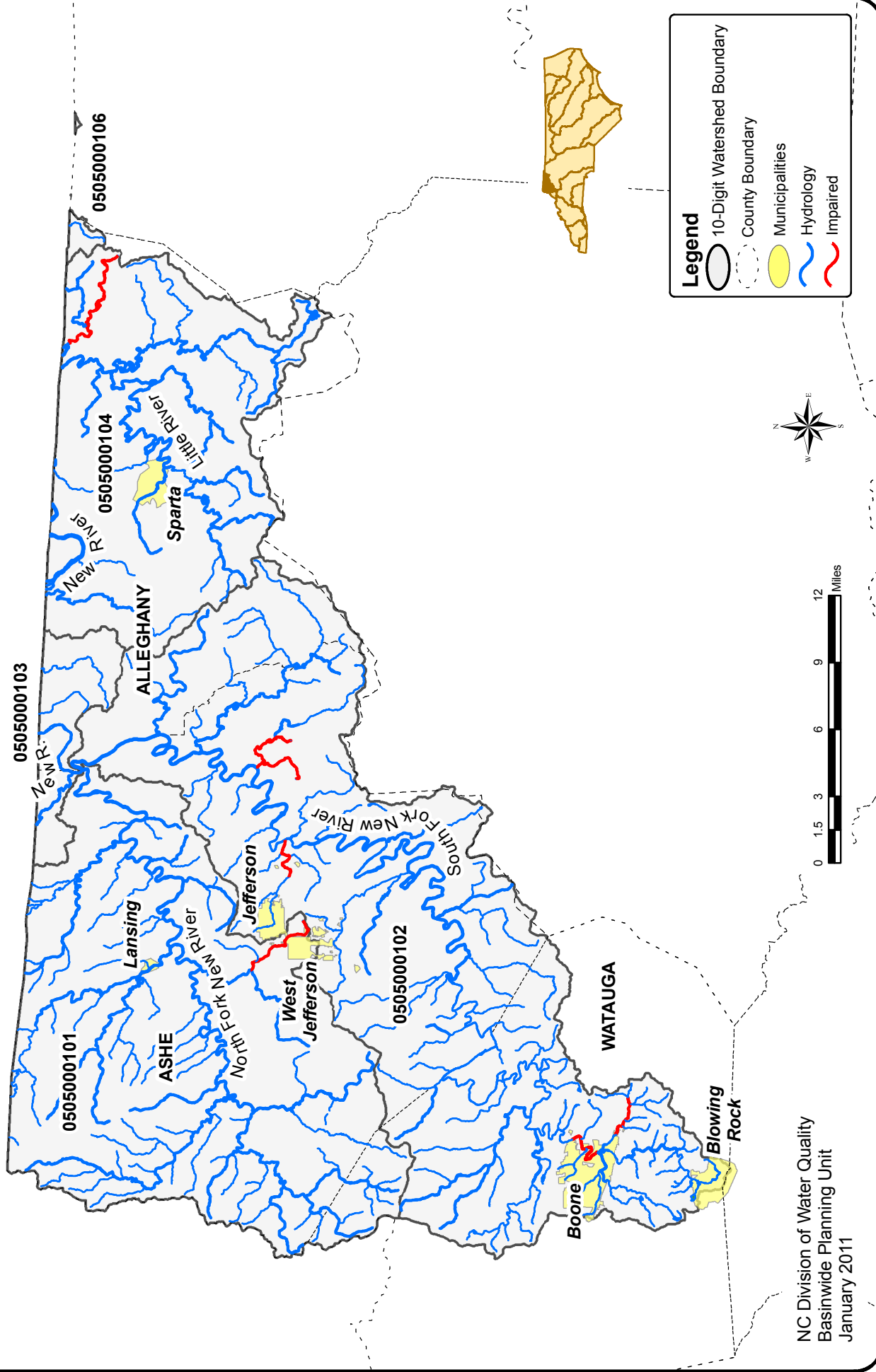


Legend

- 10-Digit Watershed Boundary
- County Boundary
- Municipalities
- Hydrology
- Impaired

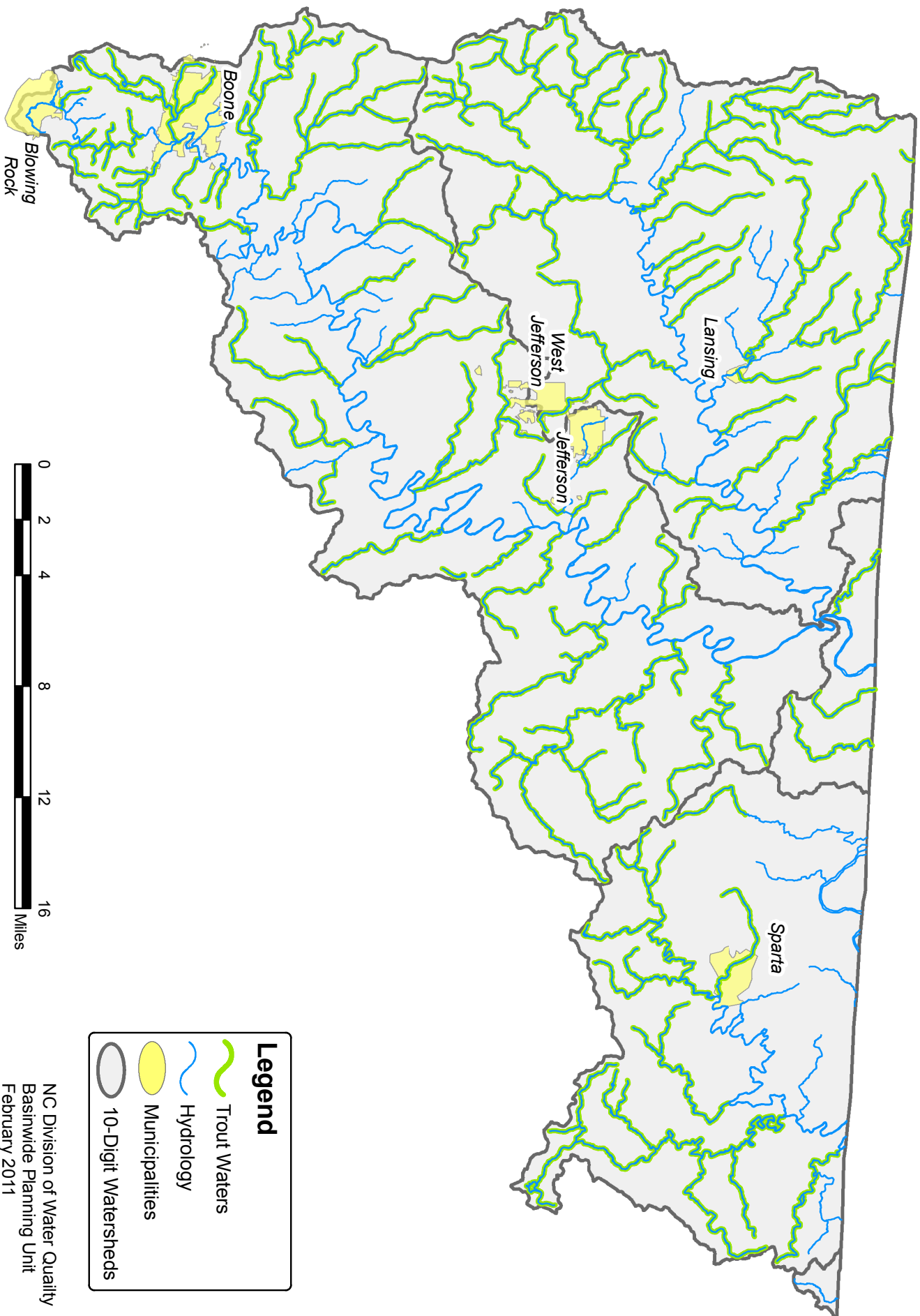


New River Basin 2010 Impaired Waters



NC Division of Water Quality
Basinwide Planning Unit
January 2011

Trout Waters in the New River Basin

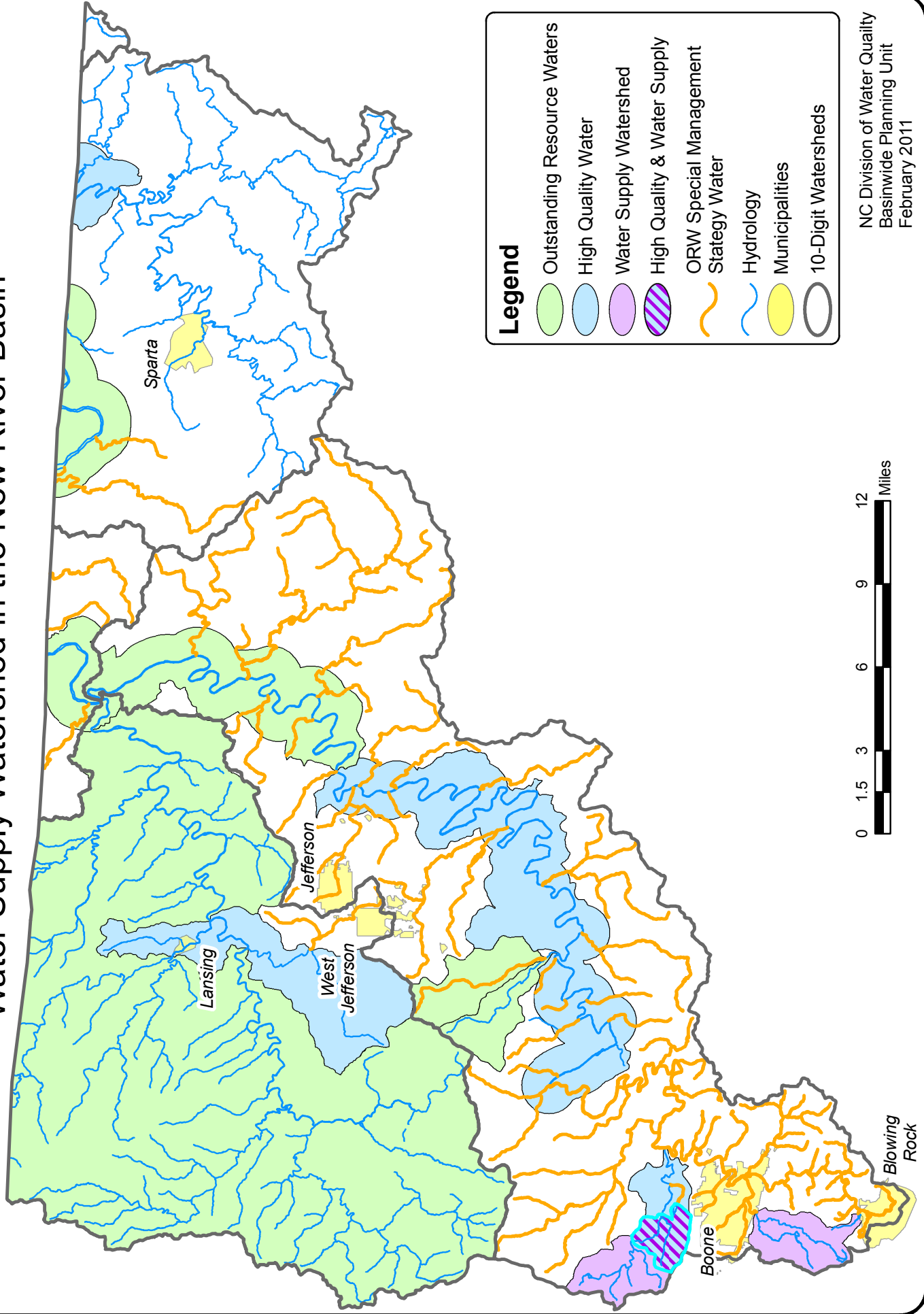


Legend

- Trout Waters
- Hydrology
- Municipalities
- 10-Digit Watersheds

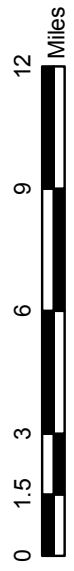
NC Division of Water Quality
Basinwide Planning Unit
February 2011

Outstanding Resource Waters, High Quality Waters & Water Supply Watershed in the New River Basin



Legend

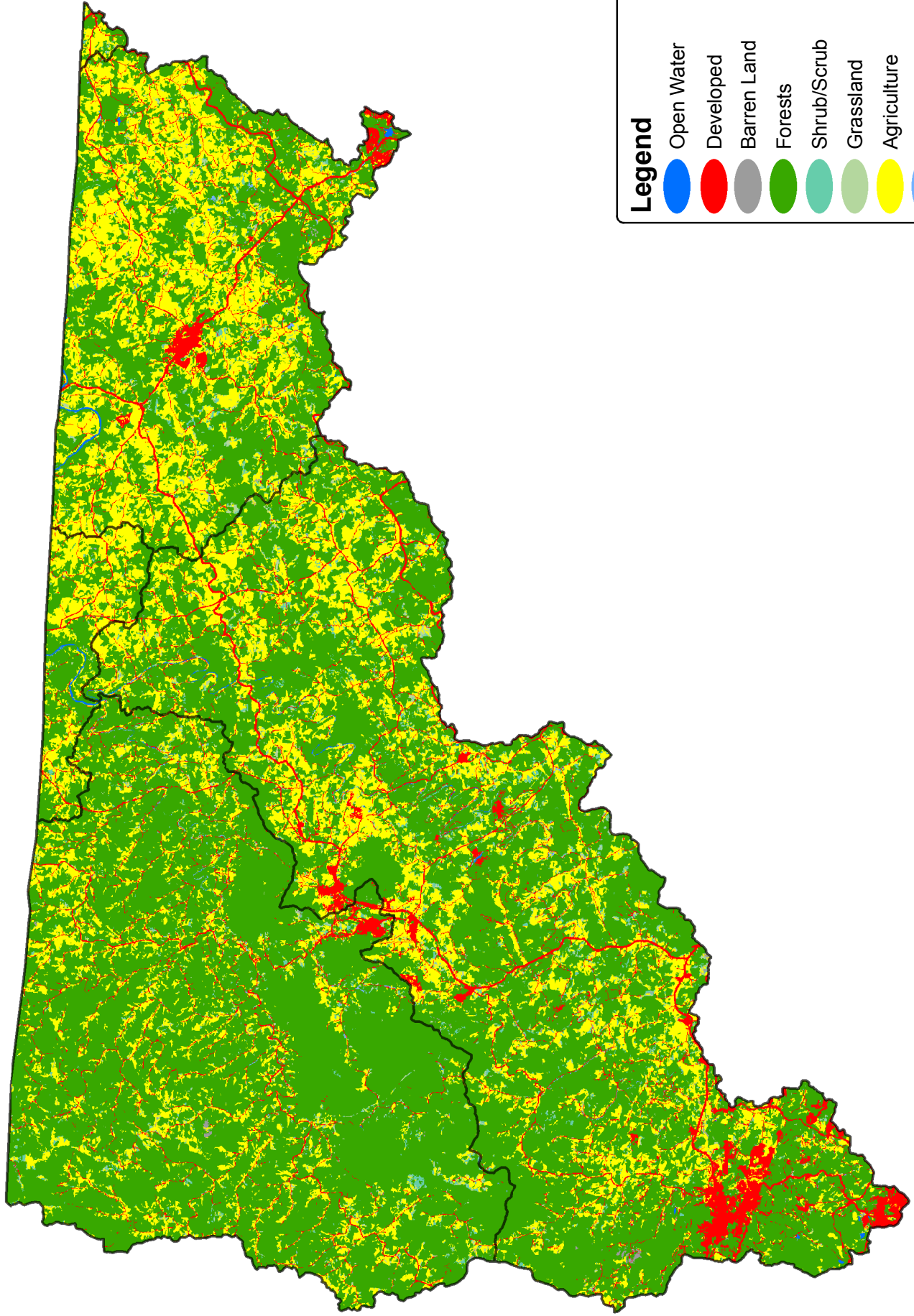
- Outstanding Resource Waters
- High Quality Water
- Water Supply Watershed
- High Quality & Water Supply
- ORW Special Management Strategy Water
- Hydrology
- Municipalities
- 10-Digit Watersheds



NC Division of Water Quality
 Basinwide Planning Unit
 February 2011

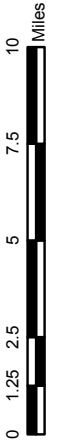
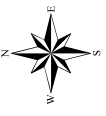
Population Density Map: Coming Soon

2001 Land Cover - New River Basin



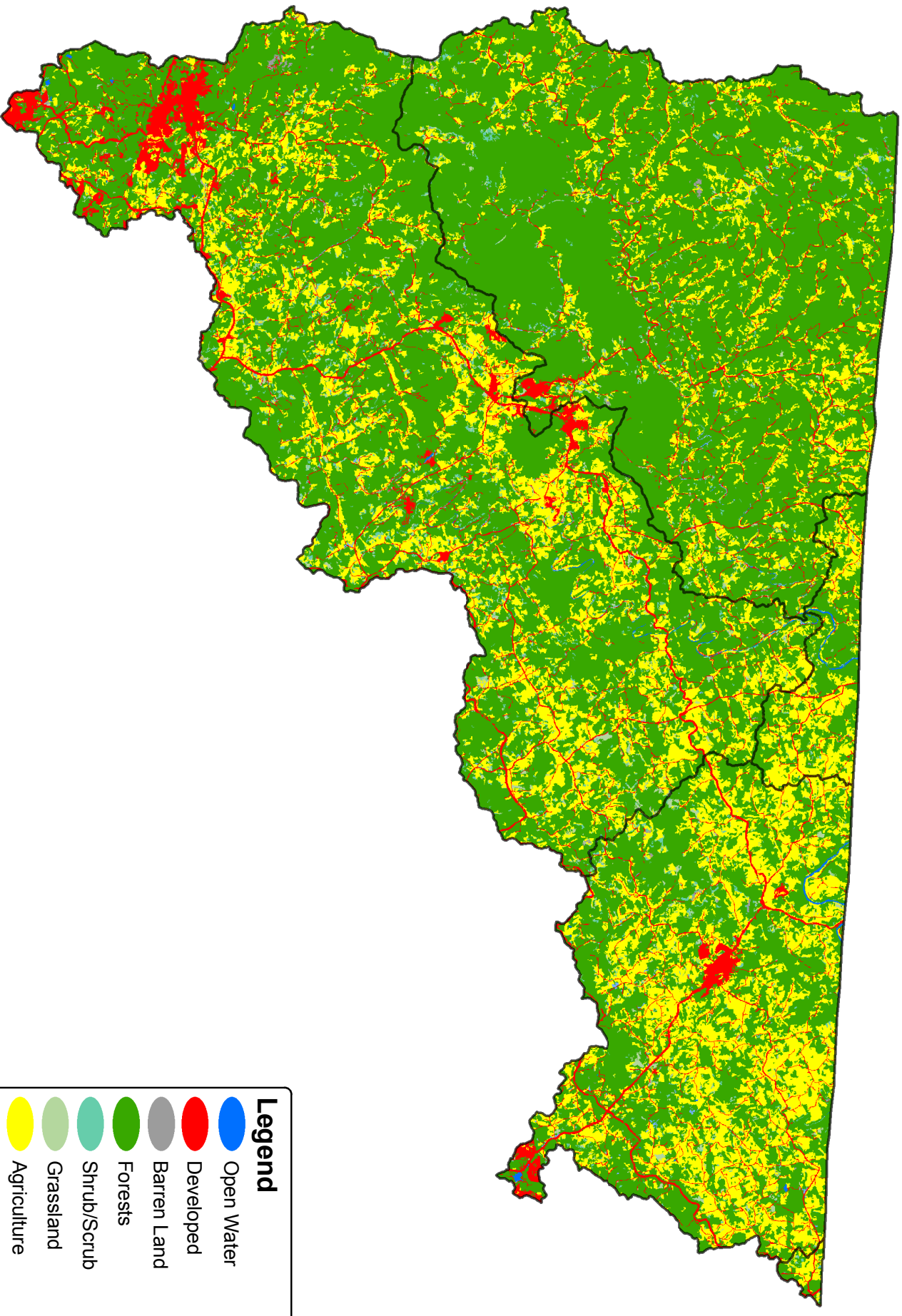
Legend

- Open Water
- Developed
- Barren Land
- Forests
- Shrub/Scrub
- Grassland
- Agriculture
- Wetlands
- 10-Digit Watersheds



NC Division of Water Quality
Basinwide Planning Unit
February 2011

2006 Land Cover - New River Basin



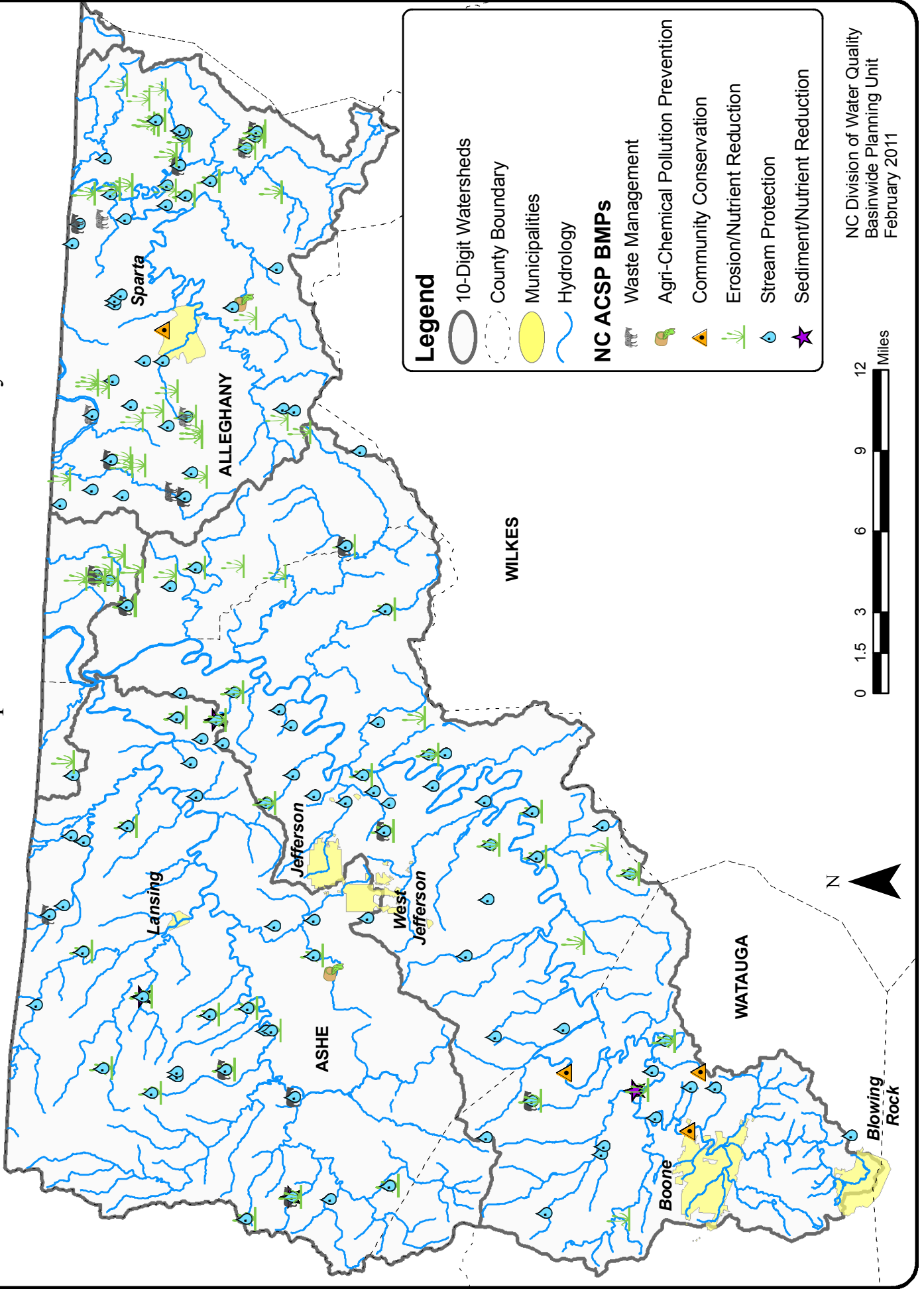
Legend

- Open Water
- Developed
- Barren Land
- Forests
- Shrub/Scrub
- Grassland
- Agriculture
- Wetlands
- 10-Digit Watersheds

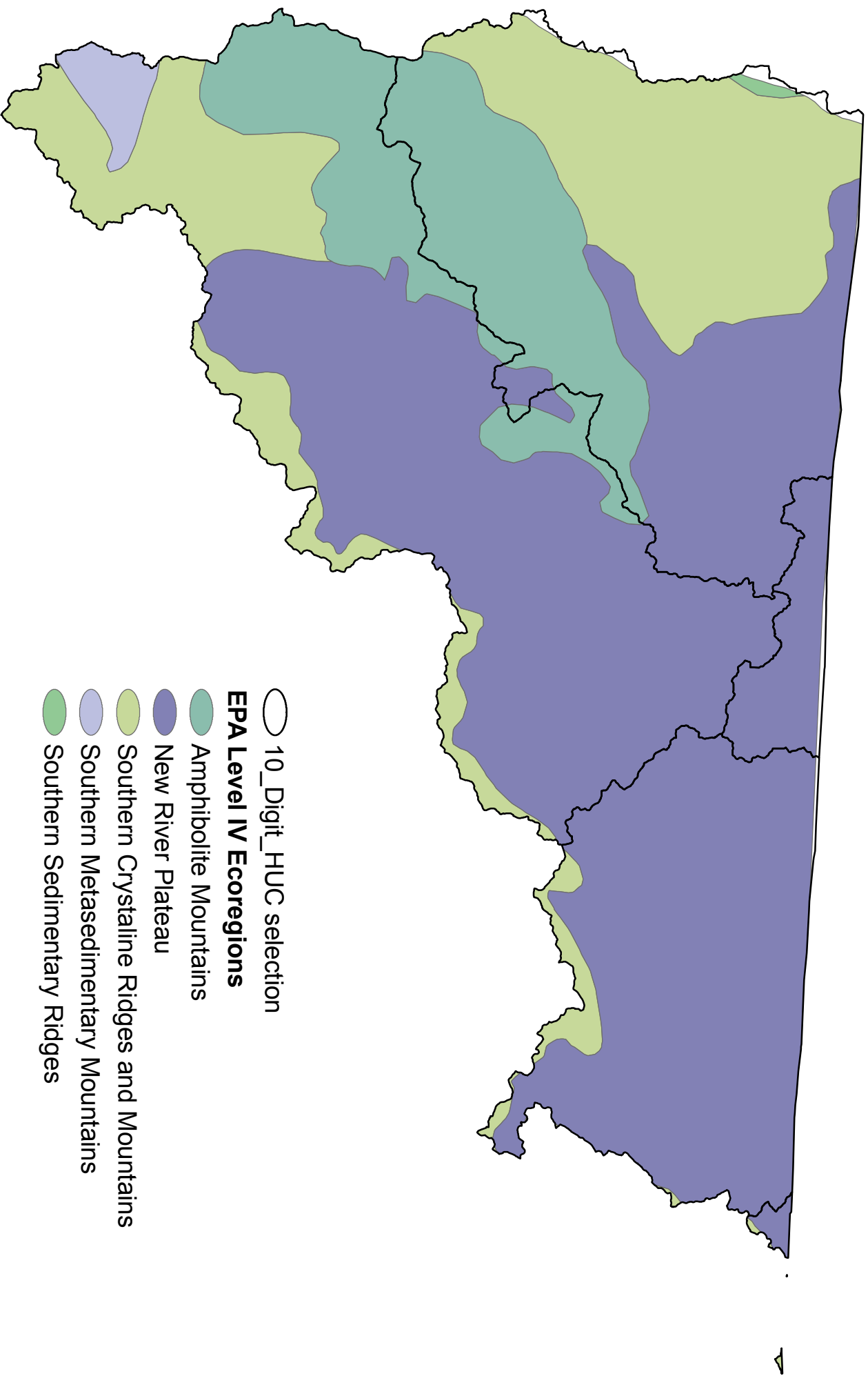


NC Division of Water Quality
Basinwide Planning Unit
March 2011

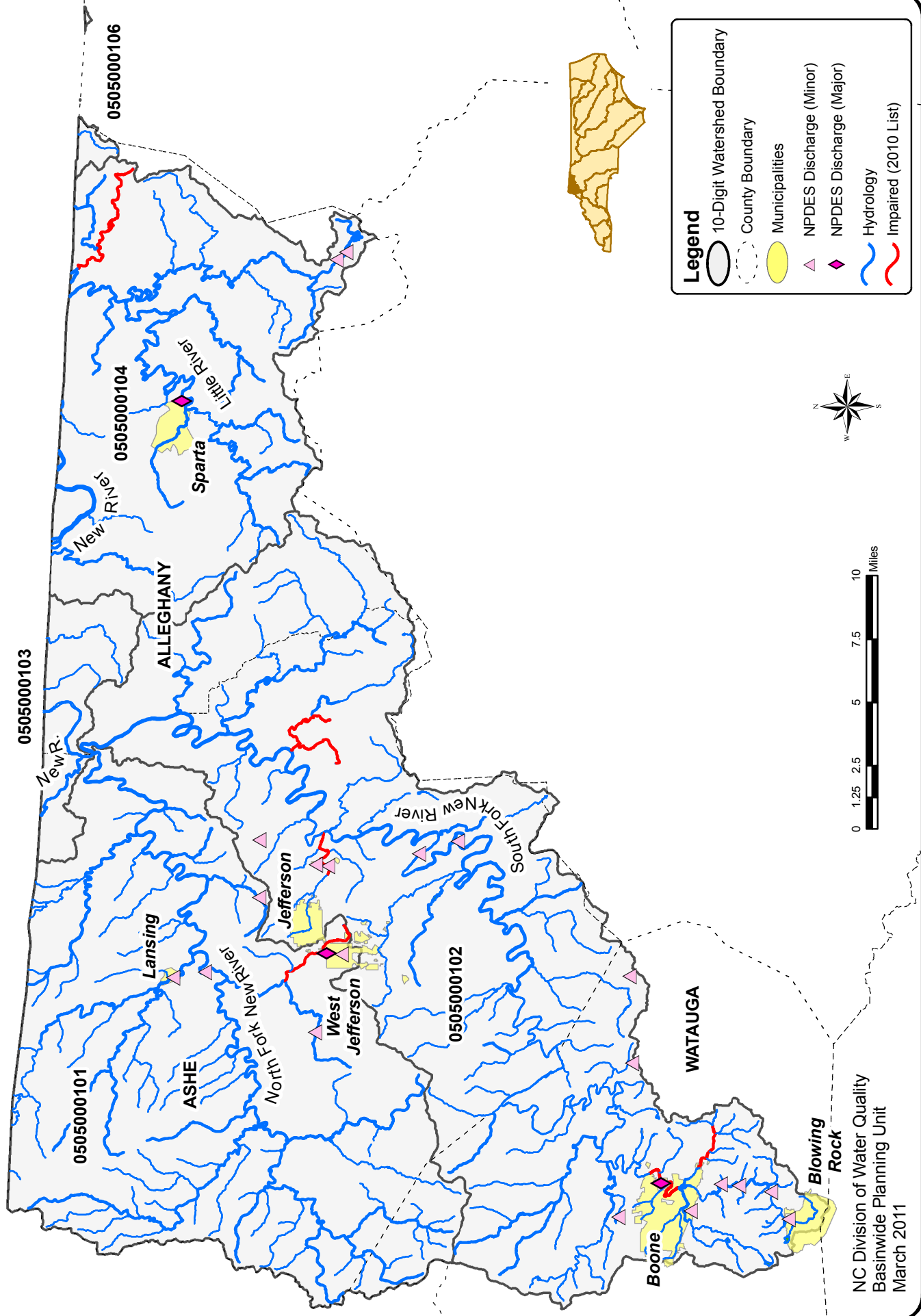
NC ACSP BMPs Implemented Between January 2003 - October 2010



EPA Level IV Ecoregions in the New River Basin

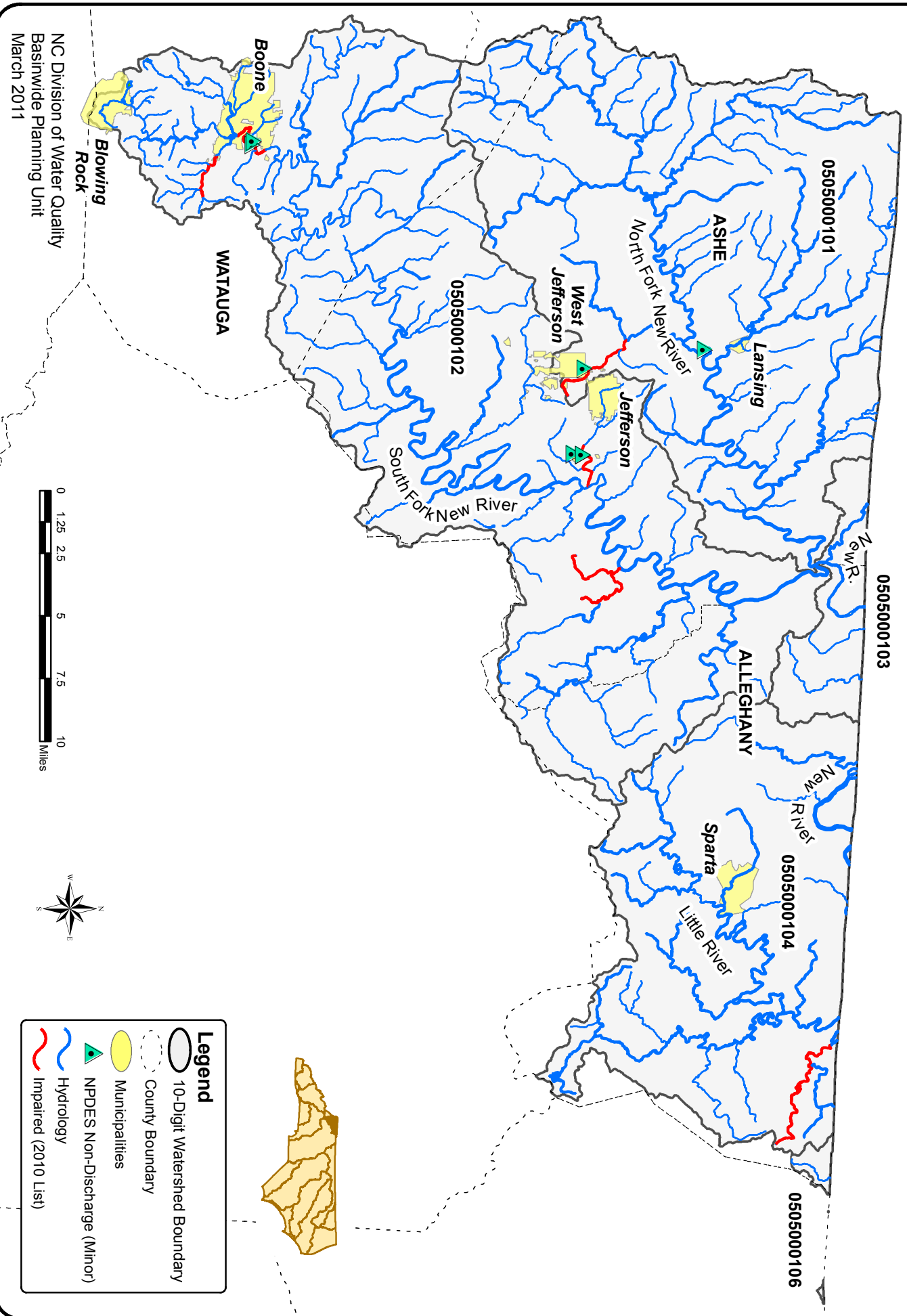


NPDES Point Source Discharge Permits in the New River Basin



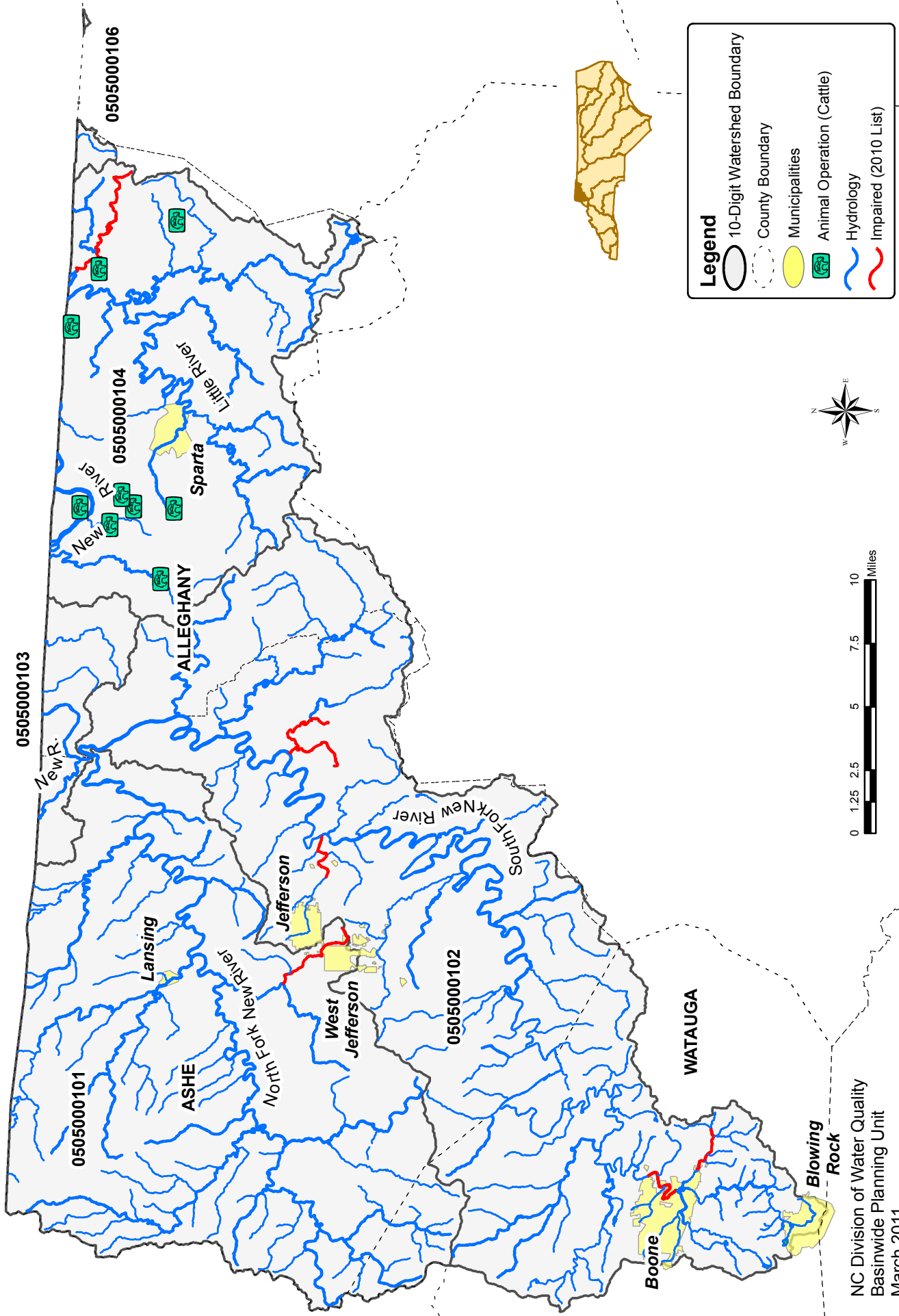
NC Division of Water Quality
 Basinwide Planning Unit
 March 2011

NPDES Non Discharger Permits in the New River Basin



NC Division of Water Quality
 Basinwide Planning Unit
 March 2011

Animal Operation Permits in the New River Basin



NC Division of Water Quality
 Basinwide Planning Unit
 March 2011

