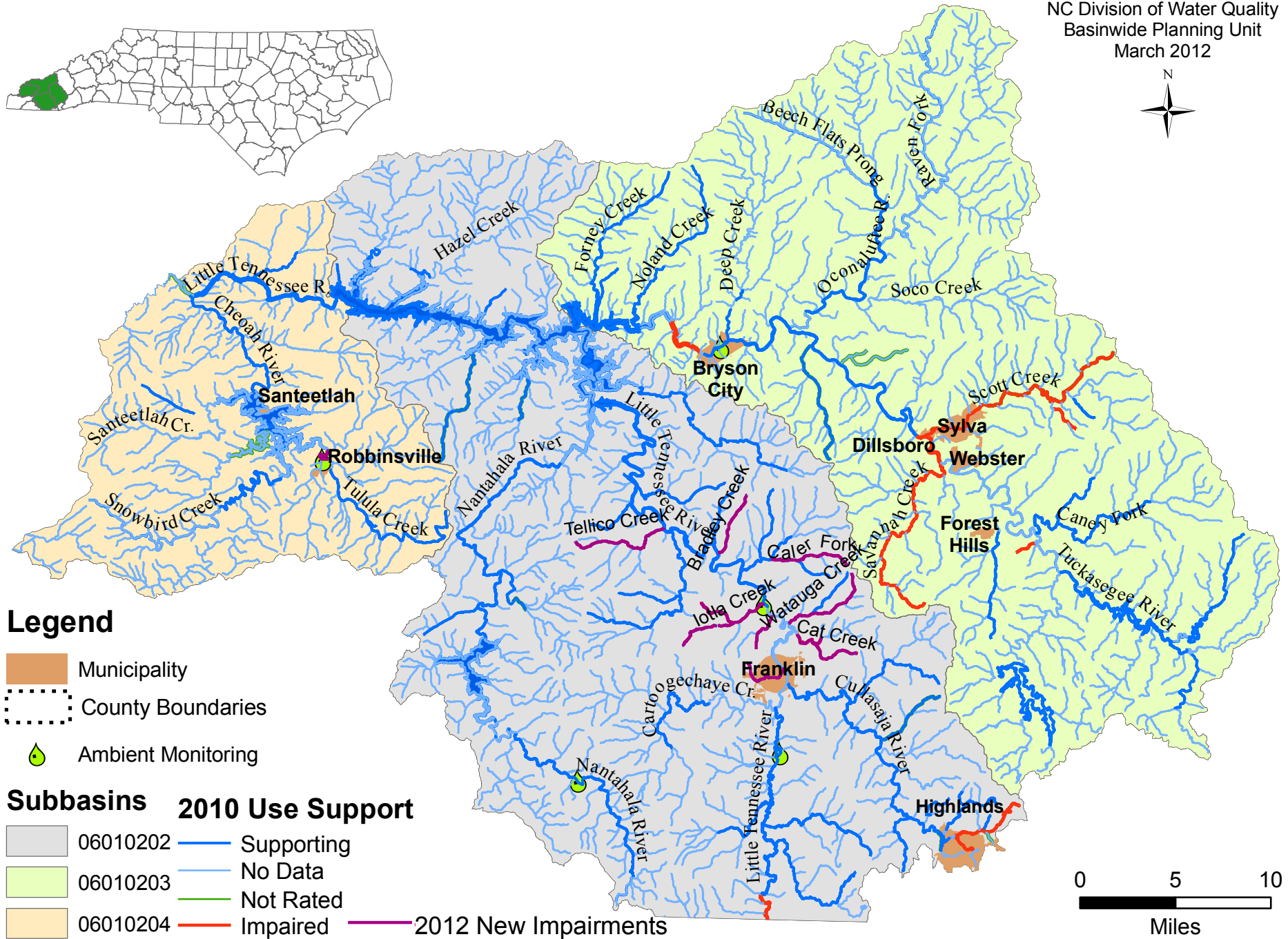
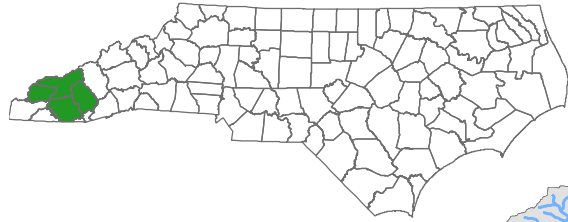
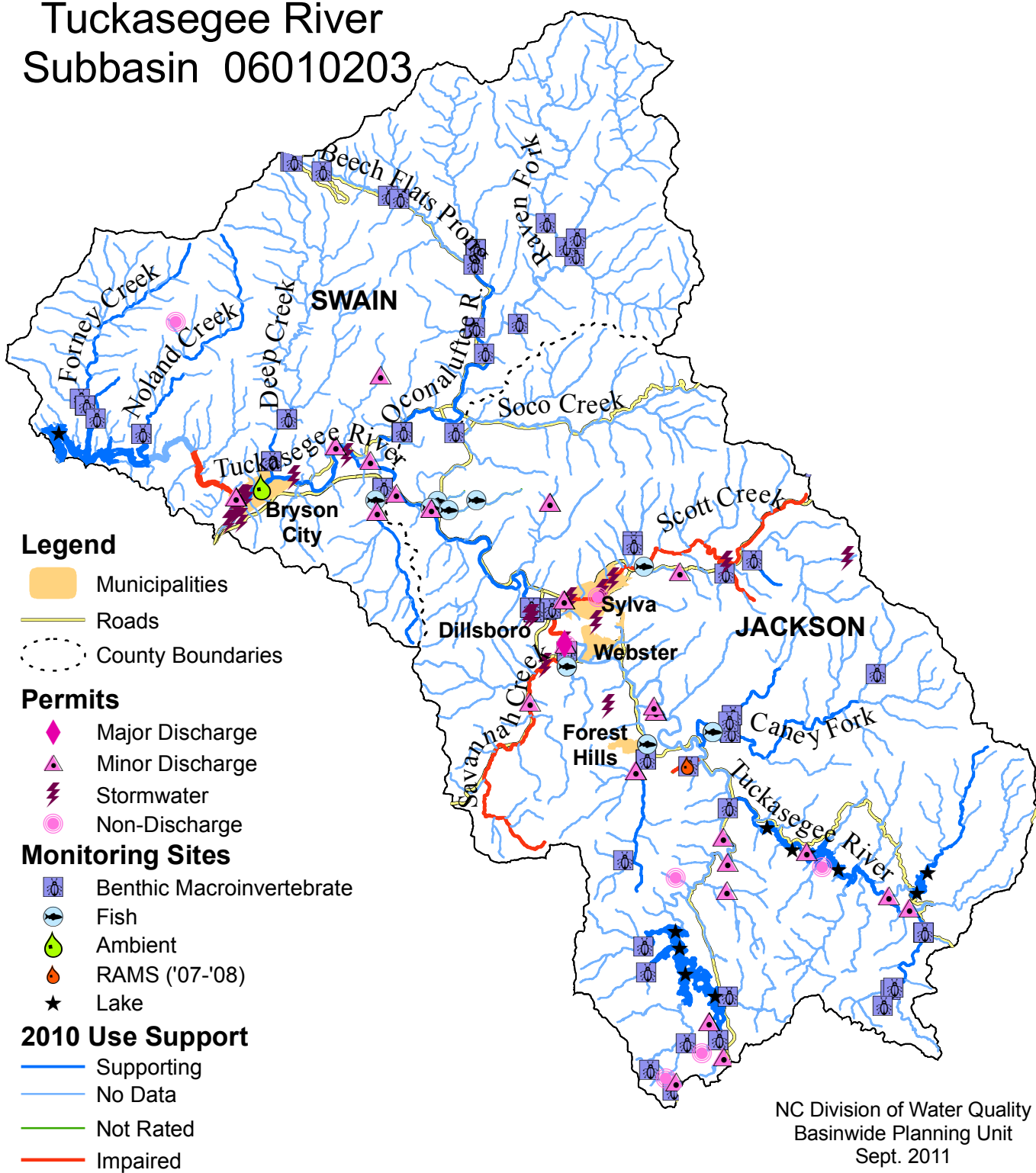


Appendix 1C

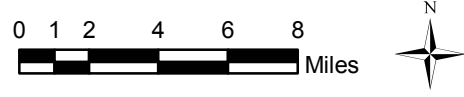
Maps



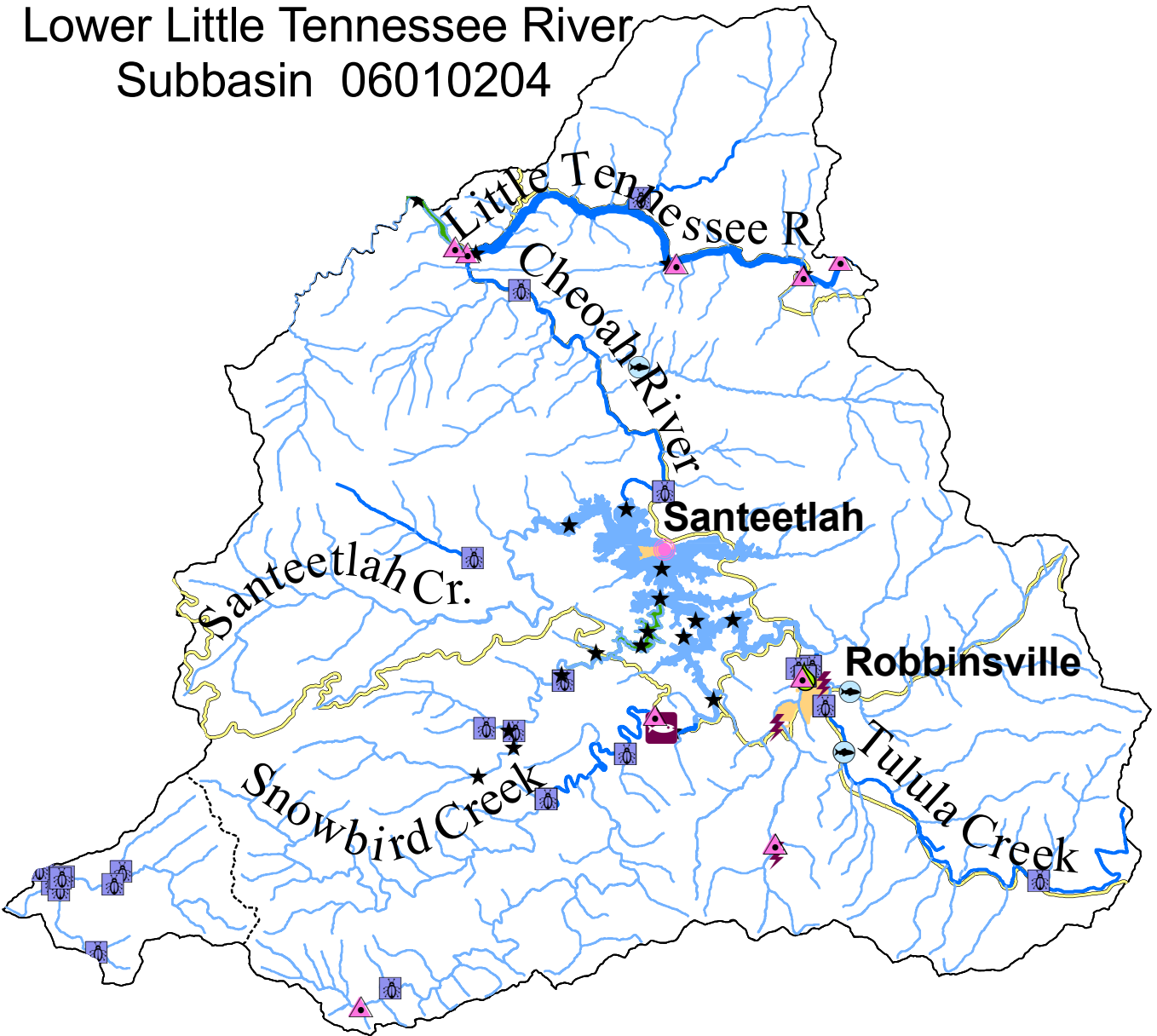
Tuckasegee River Subbasin 06010203






NC Division of Water Quality
 Basinwide Planning Unit
 Sept. 2011








Lower Little Tennessee River Subbasin 06010204







Legend

-  Municipalities
-  Roads
-  County Boundaries

Permits

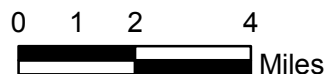
-  Aquaculture
-  Major Discharge
-  Minor Discharge
-  Stormwater
-  Non-Discharge

Monitoring Sites

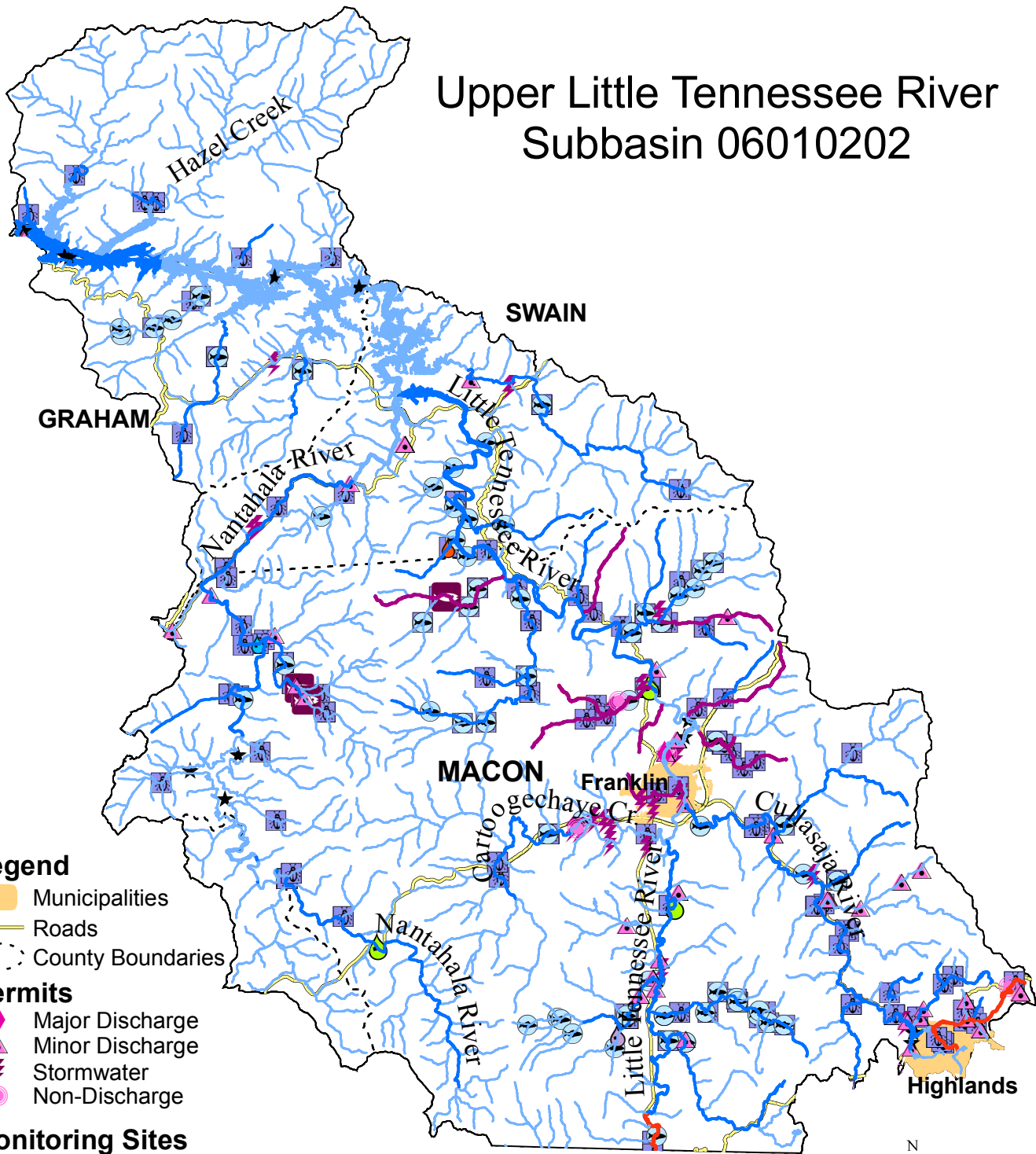
-  Benthic Macroinvertebrate
-  Fish
-  Ambient
-  Lake

2010 Use Support

-  Supporting
-  No Data
-  Not Rated
-  Impaired



Upper Little Tennessee River Subbasin 06010202



Legend

- Municipalities
- Roads
- County Boundaries

Permits

- Major Discharge
- Minor Discharge
- Stormwater
- Non-Discharge

Monitoring Sites

- Benthic Macroinvertebrate
- Fish
- Ambient
- Lake
- RAMS ('10-'11)
- RAMS ('09-'10)
- RAMS ('07-'08)

2010 Use Support

- Supporting
- No Data
- Not Rated
- Impaired
- 2012 New Impairments



0 1.5 3 Miles

NC Division of Water Quality
Basinwide Planning Unit
March 2012

2010 Use Support

- Supporting
- No Data
- Not Rated
- Impaired

Monitoring Sites

- Benthic Macroinvertebrate
- Fish
- Ambient
- Lake
- RAMS ('10-'11)
- RAMS ('09-'10)
- RAMS ('07-'08)

Permits

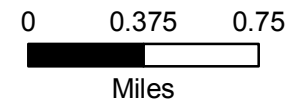
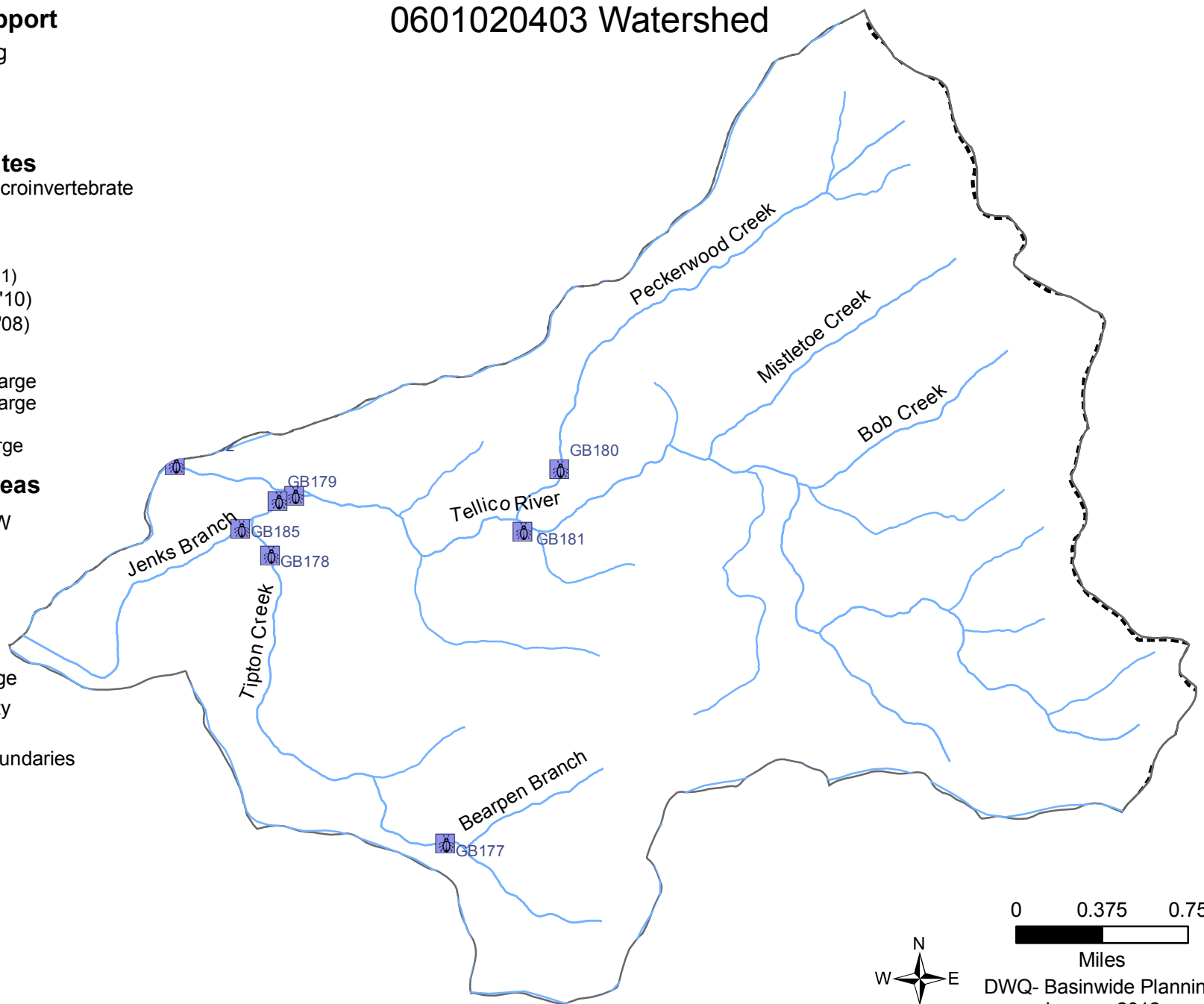
- Major Discharge
- Minor Discharge
- Stormwater
- Non-Discharge

HQW/ORW Areas

- HQW/WSW
- WSW
- HQW
- ORW

- USGS Gage
- Municipality
- Roads
- County Boundaries

0601020403 Watershed



2010 Use Support

- Supporting
- No Data
- Not Rated
- Impaired

Monitoring Sites

- Benthic Macroinvertebrate
- Fish
- Ambient
- Lake
- RAMS ('10-'11)
- RAMS ('09-'10)
- RAMS ('07-'08)

Permits

- Major Discharge
- Minor Discharge
- Stormwater
- Non-Discharge

- USGS Gage

- Municipality

- Roads

- County Boundaries

Ag-Cost Share BMPs

- Agri-Chemical Pollution Prevention
- Drought Response
- Erosion/Nutrient Reduction
- Sediment/Nutrient Reduction
- Stream Protection
- Waste Management

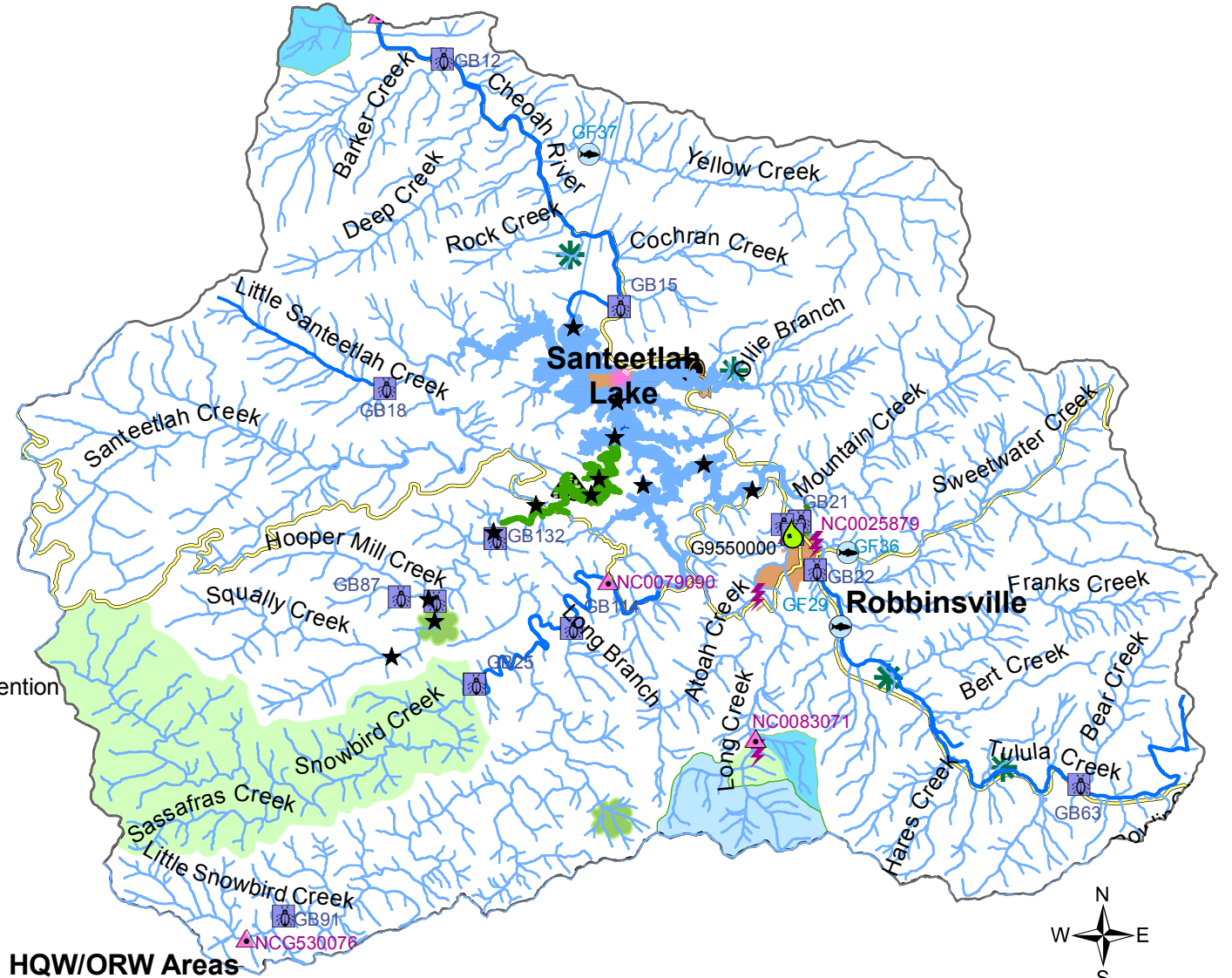
CWMTF Projects

- Acquisition-Buffers
- Acquisition-Greenways
- Easements
- Restoration
- Stormwater
- Wastewater
- Planning

HQW/ORW Areas

- HQW/WSW
- WSW
- HQW
- ORW

0601020401 Watershed



Miles

2010 Use Support

- Supporting
- No Data
- Not Rated
- Impaired

Monitoring Sites

- Benthic Macroinvertebrate
- Fish
- Ambient
- Lake
- RAMS ('10-'11)
- RAMS ('09-'10)
- RAMS ('07-'08)

Permits

- Major Discharge
- Minor Discharge
- Stormwater
- Non-Discharge

- USGS Gage

- Municipality

- Roads

- County Boundaries

Ag-Cost Share BMPs

- Agri-Chemical Pollution Prevention
- Drought Response
- Erosion/Nutrient Reduction
- Sediment/Nutrient Reduction
- Stream Protection
- Waste Management

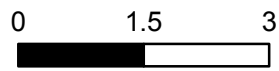
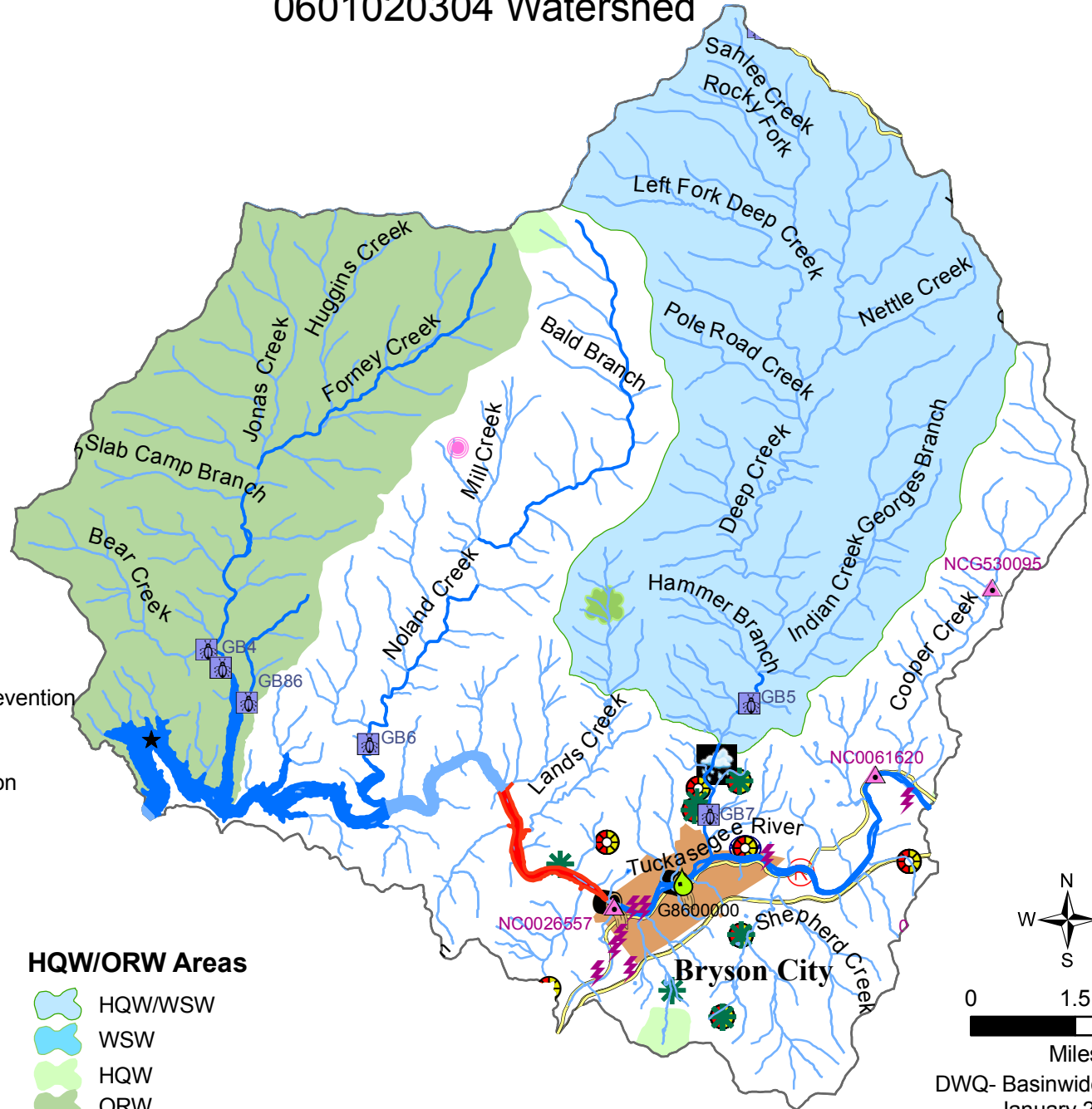
CWMTF Projects

- Acquisition-Buffers
- Acquisition-Greenways
- Easements
- Restoration
- Stormwater
- Wastewater
- Planning

HQW/ORW Areas

- HQW/WSW
- WSW
- HQW
- ORW

0601020304 Watershed



Miles

2010 Use Support

- Supporting
- No Data
- Not Rated
- Impaired

HQW/ORW Areas

- HQW/WSW
- WSW
- HQW
- ORW

0601020303

Watershed

Monitoring Sites

- Benthic Macroinvertebrate
- Fish
- Ambient
- ★ Lake
- RAMS ('10-'11)
- RAMS ('09-'10)
- RAMS ('07-'08)

Permits

- ◆ Major Discharge
- ▲ Minor Discharge
- ⚡ Stormwater
- Non-Discharge

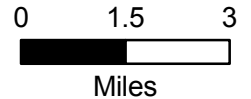
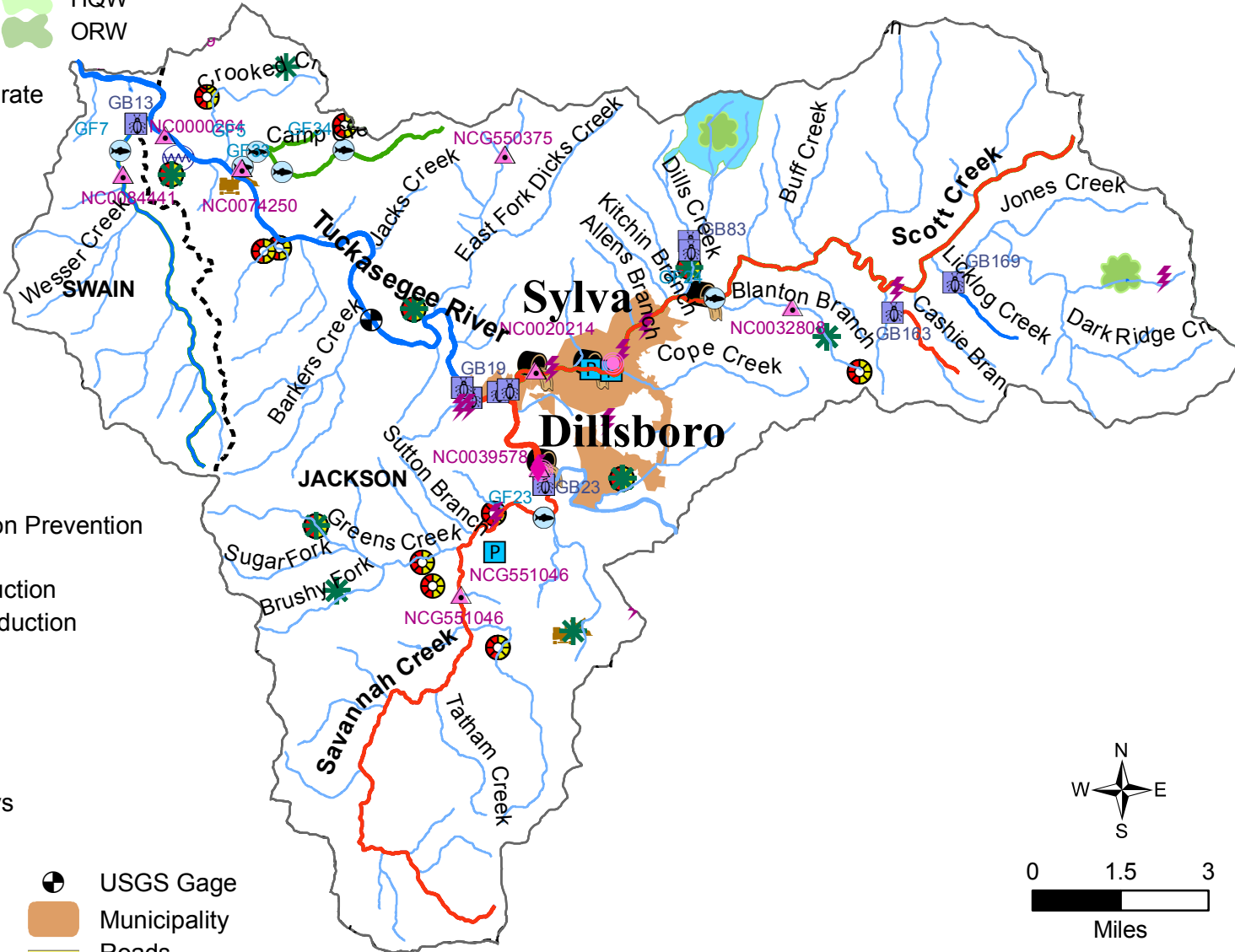
Ag-Cost Share BMPs

- Agri-Chemical Pollution Prevention
- Drought Response
- Erosion/Nutrient Reduction
- Sediment/Nutrient Reduction
- Stream Protection
- Waste Management

CWMTF Projects

- Acquisition-Buffers
- Acquisition-Greenways
- Easements
- Ⓜ Restoration
- Stormwater
- Wastewater
- Planning

- USGS Gage
- Municipality
- Roads
- County Boundaries



2010 Use Support

- Supporting
- No Data
- Not Rated
- Impaired

Monitoring Sites

- Benthic Macroinvertebrate
- Fish
- Ambient
- Lake
- RAMS ('10-'11)
- RAMS ('09-'10)
- RAMS ('07-'08)

Permits

- Major Discharge
- Minor Discharge
- Stormwater
- Non-Discharge

- USGS Gage

- Municipality

- Roads

- County Boundaries

Ag-Cost Share BMPs

- Agri-Chemical Pollution Prevention
- Drought Response
- Erosion/Nutrient Reduction
- Sediment/Nutrient Reduction
- Stream Protection
- Waste Management

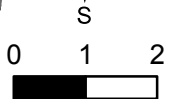
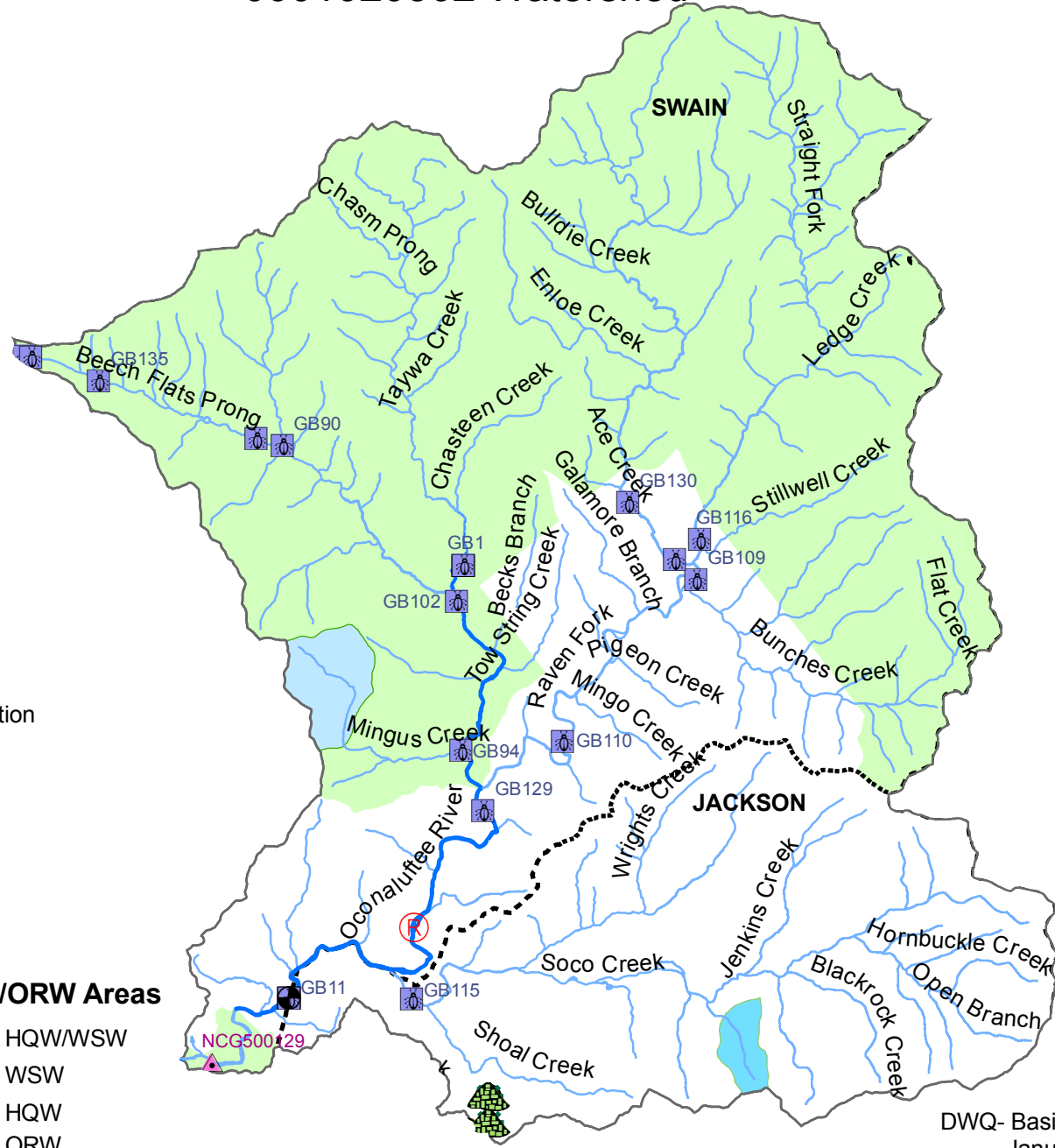
CWMTF Projects

- Acquisition-Buffers
- Acquisition-Greenways
- Easements
- Restoration
- Stormwater
- Wastewater
- Planning

HQW/ORW Areas

- HQW/WSW
- WSW
- HQW
- ORW

0601020302 Watershed



2010 Use Support

- Supporting
- No Data
- Not Rated
- Impaired

HQW/ORW Areas

- HQW/WSW
- WSW
- HQW
- ORW

0601020301
Watershed

Monitoring Sites

- Benthic Macroinvertebrate
- Fish
- Ambient
- Lake
- RAMS ('10-'11)
- RAMS ('09-'10)
- RAMS ('07-'08)

Permits

- Major Discharge
- Minor Discharge
- Stormwater
- Non-Discharge

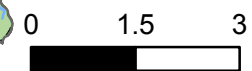
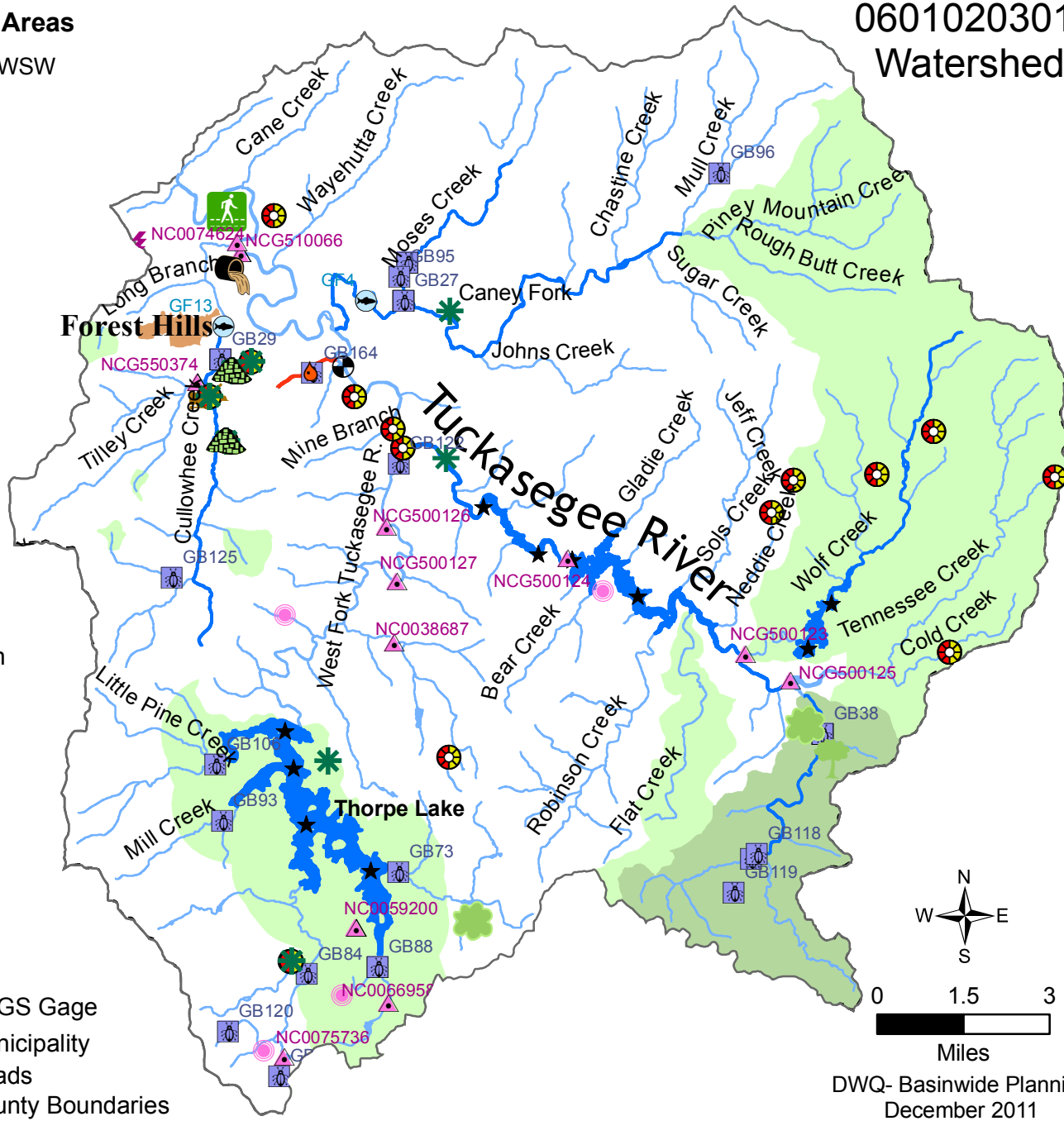
Ag-Cost Share BMPs

- Agri-Chemical Pollution Prevention
- Drought Response
- Erosion/Nutrient Reduction
- Sediment/Nutrient Reduction
- Stream Protection
- Waste Management

CWMTF Projects

- Acquisition-Buffers
- Acquisition-Greenways
- Easements
- Restoration
- Stormwater
- Wastewater
- Planning

- USGS Gage
- Municipality
- Roads
- County Boundaries



Miles

DWQ- Basinwide Planning
December 2011

2010 Use Support

- Supporting
- No Data
- Not Rated
- Impaired

Monitoring Sites

- Benthic Macroinvertebrate
- Fish
- Ambient
- Lake
- RAMS ('10-'11)
- RAMS ('09-'10)
- RAMS ('07-'08)

Permits

- Major Discharge
- Minor Discharge
- Stormwater
- Non-Discharge

- USGS Gage

- Municipality

- Roads

- County Boundaries

Ag-Cost Share BMPs

- Agri-Chemical Pollution Prevention
- Drought Response
- Erosion/Nutrient Reduction
- Sediment/Nutrient Reduction
- Stream Protection
- Waste Management

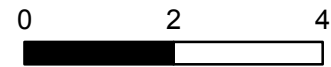
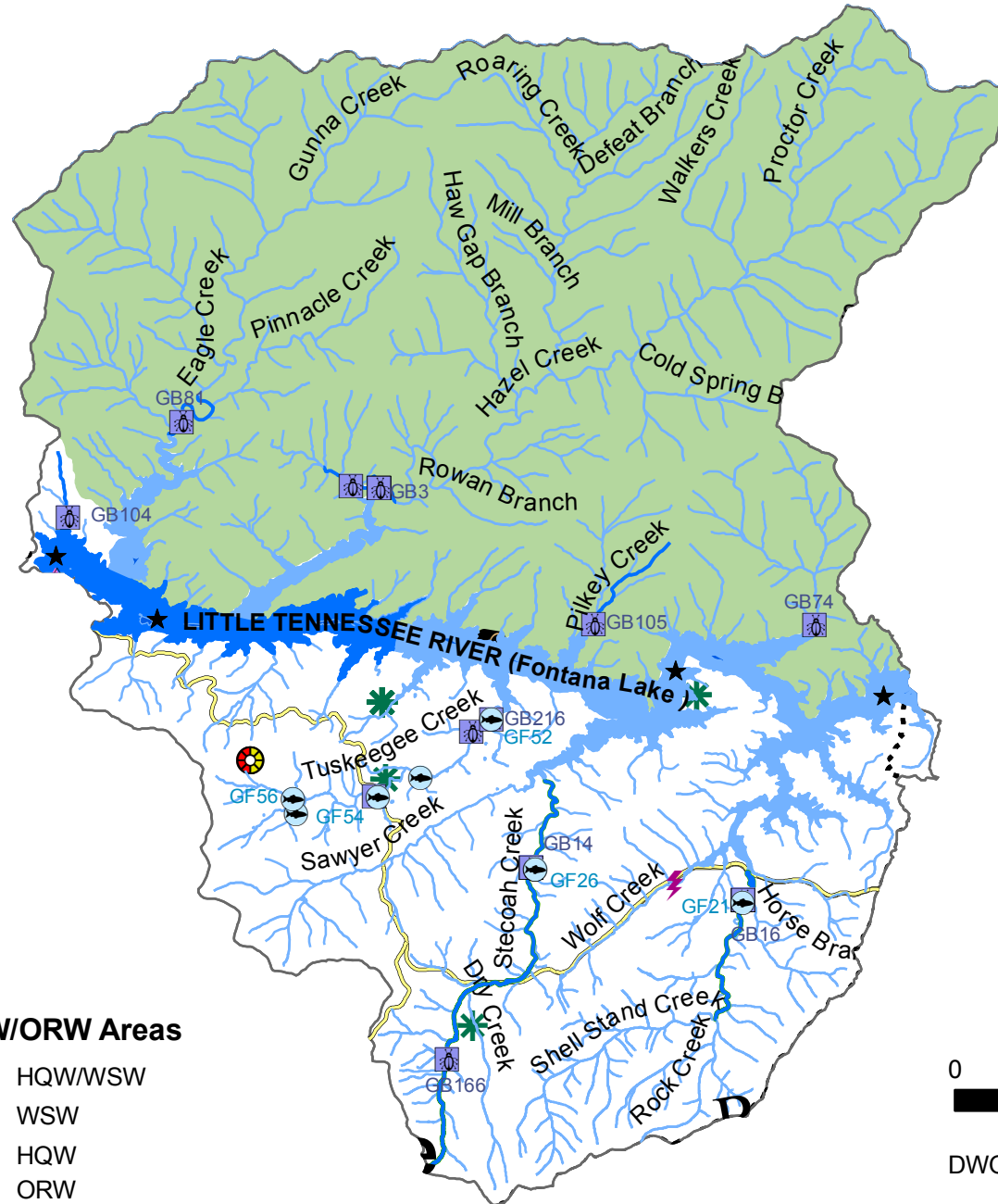
CWMTF Projects

- Acquisition-Buffers
- Acquisition-Greenways
- Easements
- Restoration
- Stormwater
- Wastewater
- Planning

HQW/ORW Areas

- HQW/WSW
- WSW
- HQW
- ORW

0601020205 Watershed



Miles

DWQ- Basinwide Planning
January 2012

2010 Use Support

- Supporting
- No Data
- Not Rated
- Impaired
- New 2012 Impairments

Monitoring Sites

- Benthic Macroinvertebrate
- Fish
- Ambient
- Lake
- RAMS ('10-'11)
- RAMS ('09-'10)
- RAMS ('07-'08)

HQW/ORW Areas

- HQW/WSW
- WSW
- HQW
- ORW

Permits

- Major Discharge
- Minor Discharge
- Stormwater
- Non-Discharge
- USGS Gage
- Municipality
- Roads
- County Boundaries

Ag-Cost Share BMPs

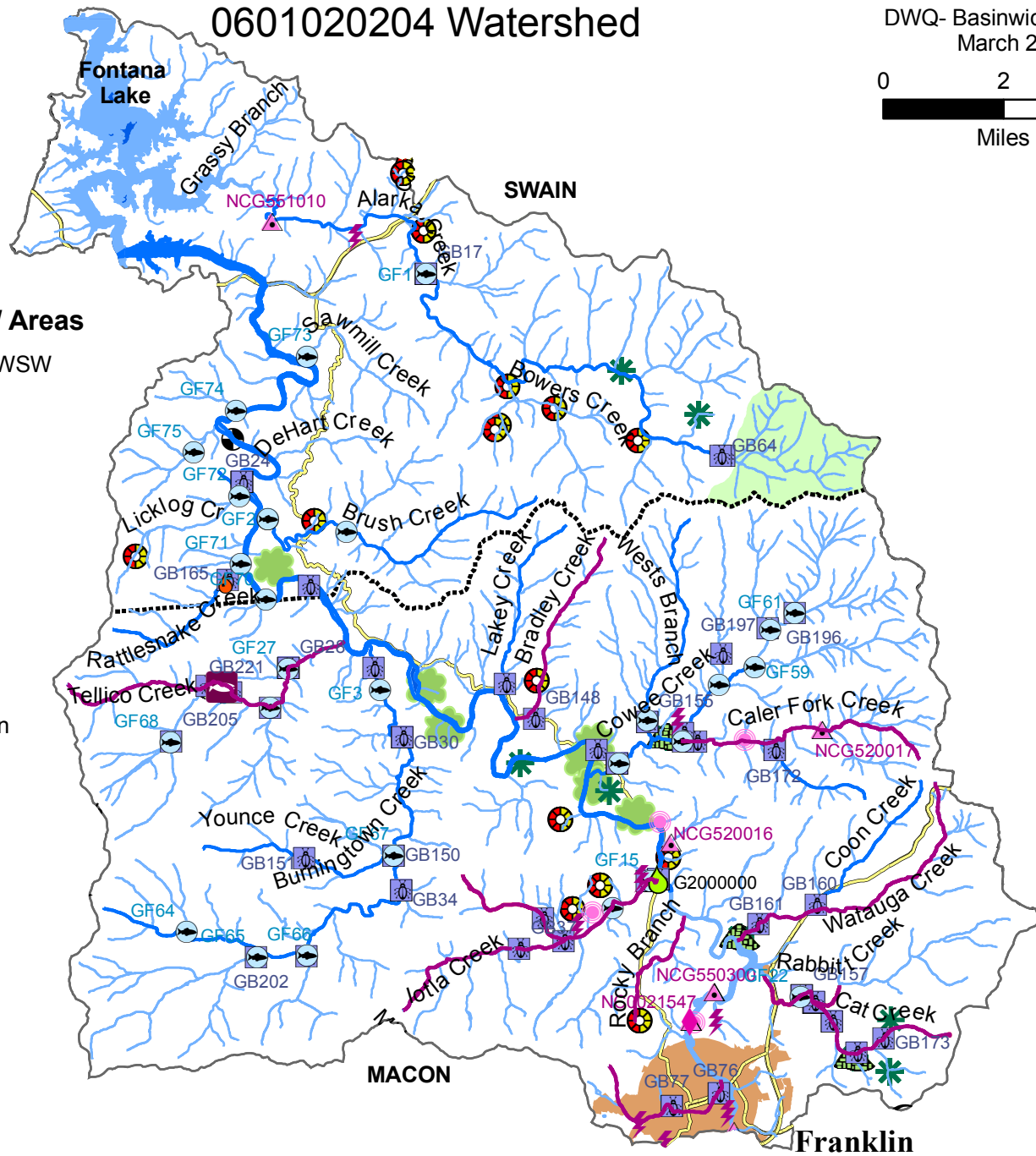
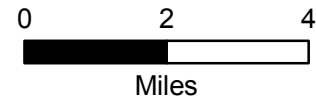
- Agri-Chemical Pollution Prevention
- Drought Response
- Erosion/Nutrient Reduction
- Sediment/Nutrient Reduction
- Stream Protection
- Waste Management

CWMTF Projects

- Acquisition-Buffers
- Acquisition-Greenways
- Easements
- Restoration
- Stormwater
- Wastewater
- Planning

0601020204 Watershed

DWQ- Basinwide Planning
March 2012



2010 Use Support

- Supporting
- No Data
- Not Rated
- Impaired

Monitoring Sites

- Benthic Macroinvertebrate
- Fish
- Ambient
- Lake
- RAMS ('10-'11)
- RAMS ('09-'10)
- RAMS ('07-'08)

Permits

- Major Discharge
- Minor Discharge
- Stormwater
- Non-Discharge

- USGS Gage

- Municipality

- Roads

- County Boundaries

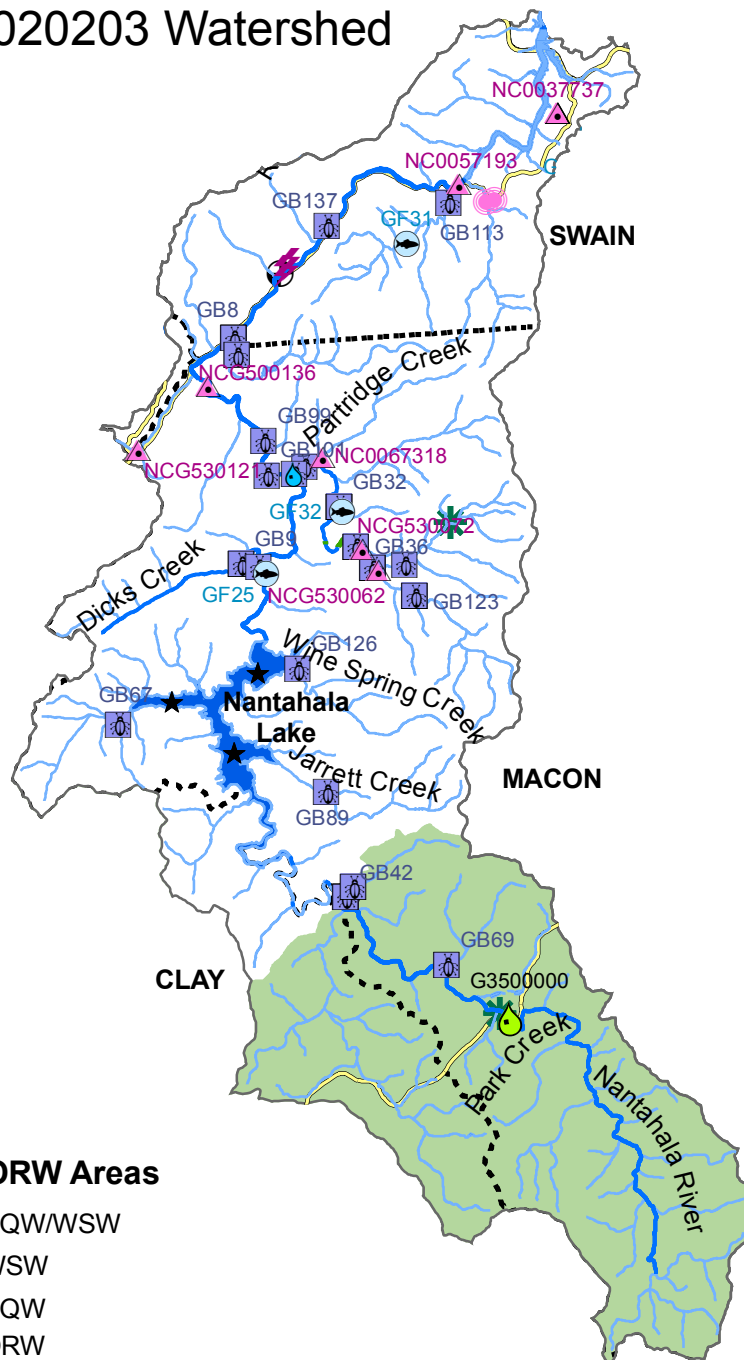
Ag-Cost Share BMPs

- Agri-Chemical Pollution Prevention
- Drought Response
- Erosion/Nutrient Reduction
- Sediment/Nutrient Reduction
- Stream Protection
- Waste Management

CWMTF Projects

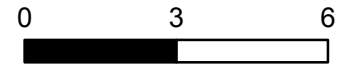
- Acquisition-Buffers
- Acquisition-Greenways
- Easements
- Restoration
- Stormwater
- Wastewater
- Planning

0601020203 Watershed



HQW/ORW Areas

- HQW/WSW
- WSW
- HQW
- ORW



Miles

DWQ- Basinwide Planning
January 2012

2010 Use Support

- Supporting
- No Data
- Not Rated
- Impaired

Monitoring Sites

- Benthic Macroinvertebrate
- Fish
- Ambient
- Lake
- RAMS ('10-'11)
- RAMS ('09-'10)
- RAMS ('07-'08)

Permits

- Major Discharge
- Minor Discharge
- Stormwater
- Non-Discharge

- USGS Gage

- Municipality

- Roads

- County Boundaries

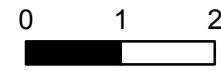
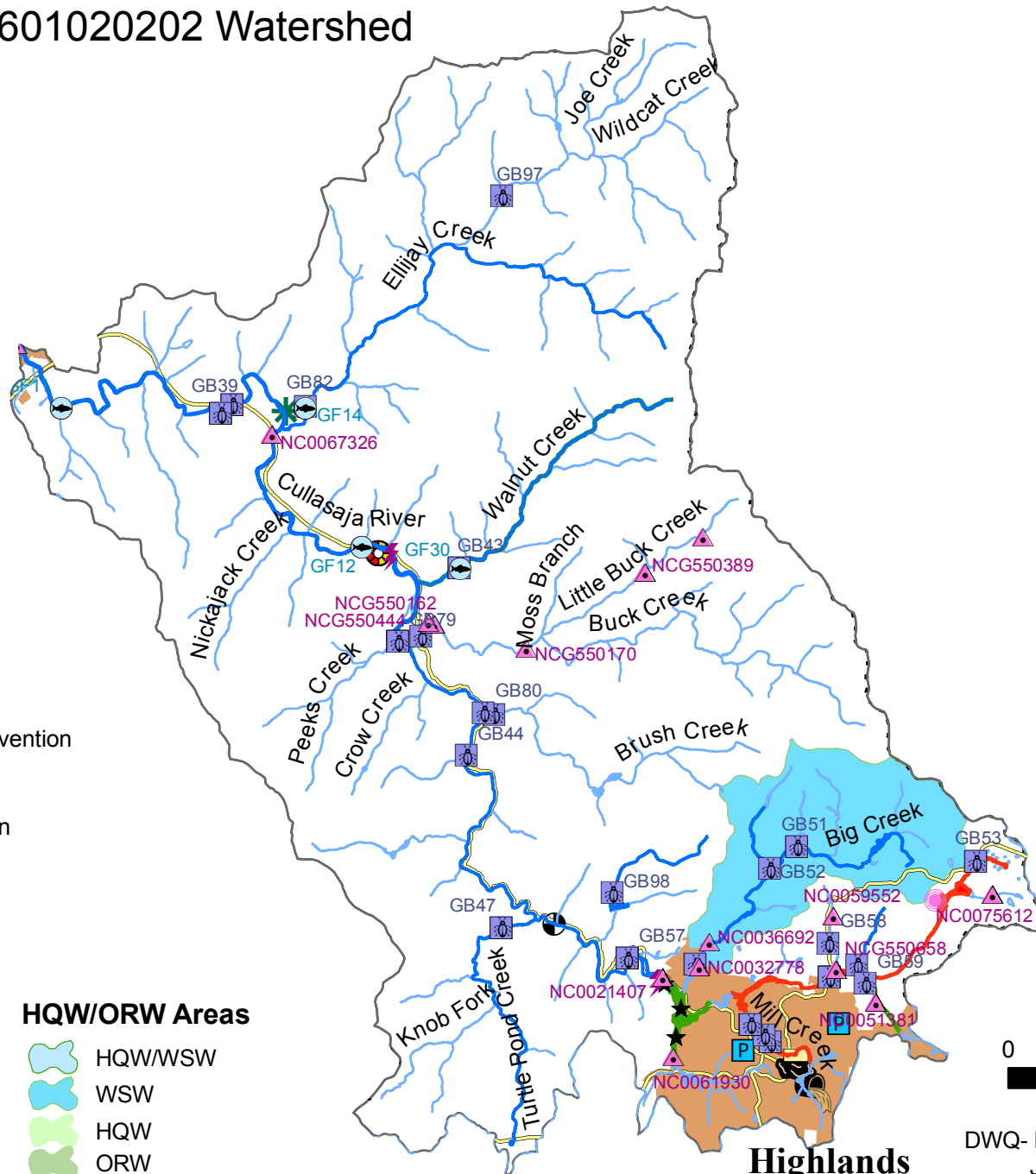
Ag-Cost Share BMPs

- Agri-Chemical Pollution Prevention
- Drought Response
- Erosion/Nutrient Reduction
- Sediment/Nutrient Reduction
- Stream Protection
- Waste Management

CWMTF Projects

- Acquisition-Buffers
- Acquisition-Greenways
- Easements
- Restoration
- Stormwater
- Wastewater
- Planning

0601020202 Watershed



Miles

2010 Use Support

- Supporting
- No Data
- Not Rated
- Impaired

Monitoring Sites

- Benthic Macroinvertebrate
- Fish
- Ambient
- Lake
- RAMS ('10-'11)
- RAMS ('09-'10)
- RAMS ('07-'08)

Permits

- Major Discharge
- Minor Discharge
- Stormwater
- Non-Discharge

USGS Gage

- USGS Gage
- Municipality
- Roads
- County Boundaries

Ag-Cost Share BMPs

- Agri-Chemical Pollution Prevention
- Drought Response
- Erosion/Nutrient Reduction
- Sediment/Nutrient Reduction
- Stream Protection
- Waste Management

CWMTF Projects

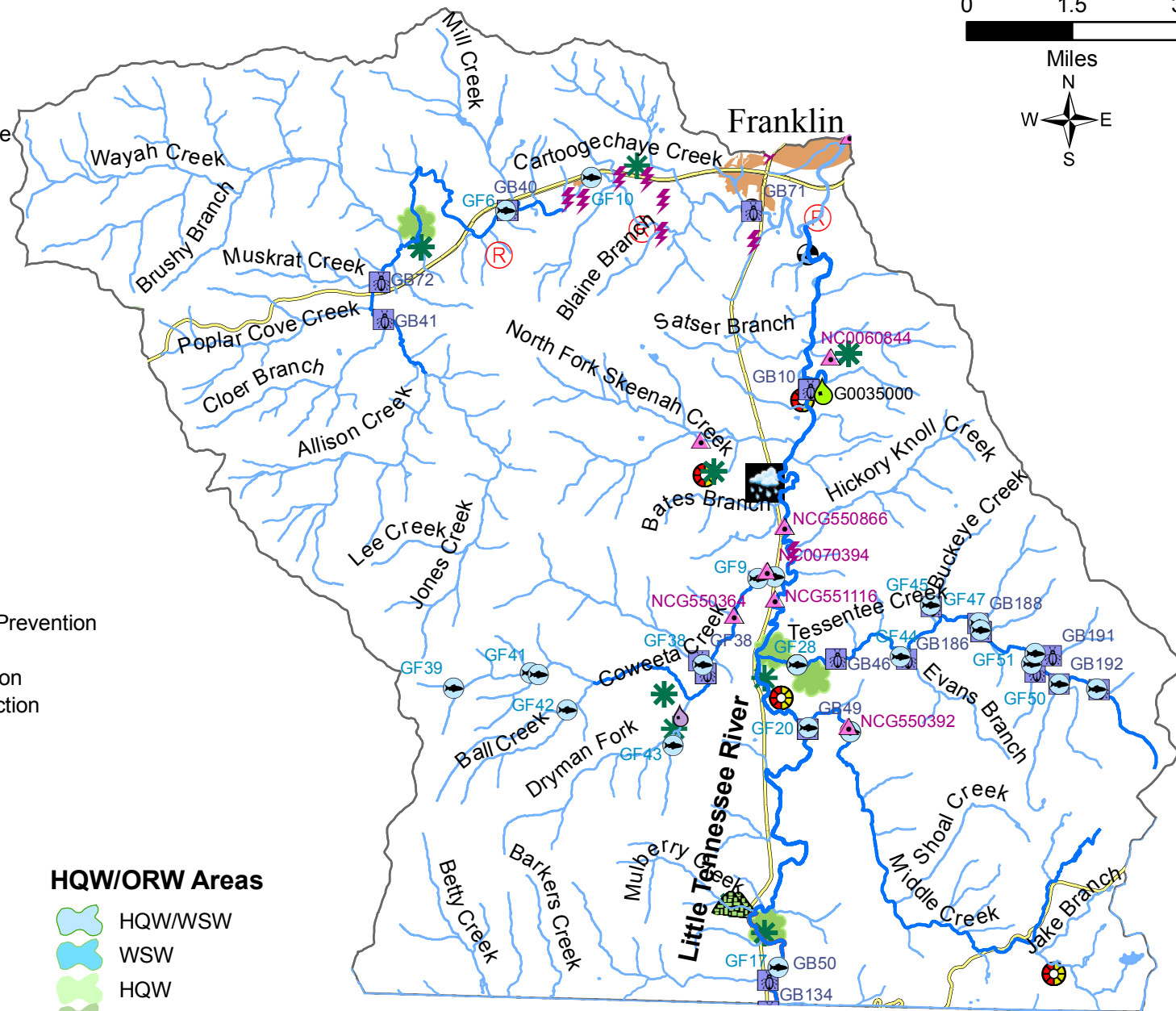
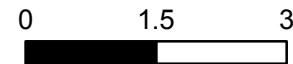
- Acquisition-Buffers
- Acquisition-Greenways
- Easements
- Restoration
- Stormwater
- Wastewater
- Planning

HQW/ORW Areas

- HQW/WSW
- WSW
- HQW
- ORW

0601020201 Watershed

DWQ- Basinwide Planning
January 2012



2010 Use Support

- Supporting
- No Data
- Not Rated
- Impaired

Monitoring Sites

- Benthic Macroinvertebrate
- Fish
- Ambient
- Lake
- RAMS ('10-'11)
- RAMS ('09-'10)
- RAMS ('07-'08)

Permits

- Major Discharge
- Minor Discharge
- Stormwater
- Non-Discharge

HQW/ORW Areas

- HQW/WSW
- WSW
- HQW
- ORW

USGS Gage

Municipality

Roads

County Boundaries

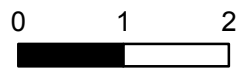
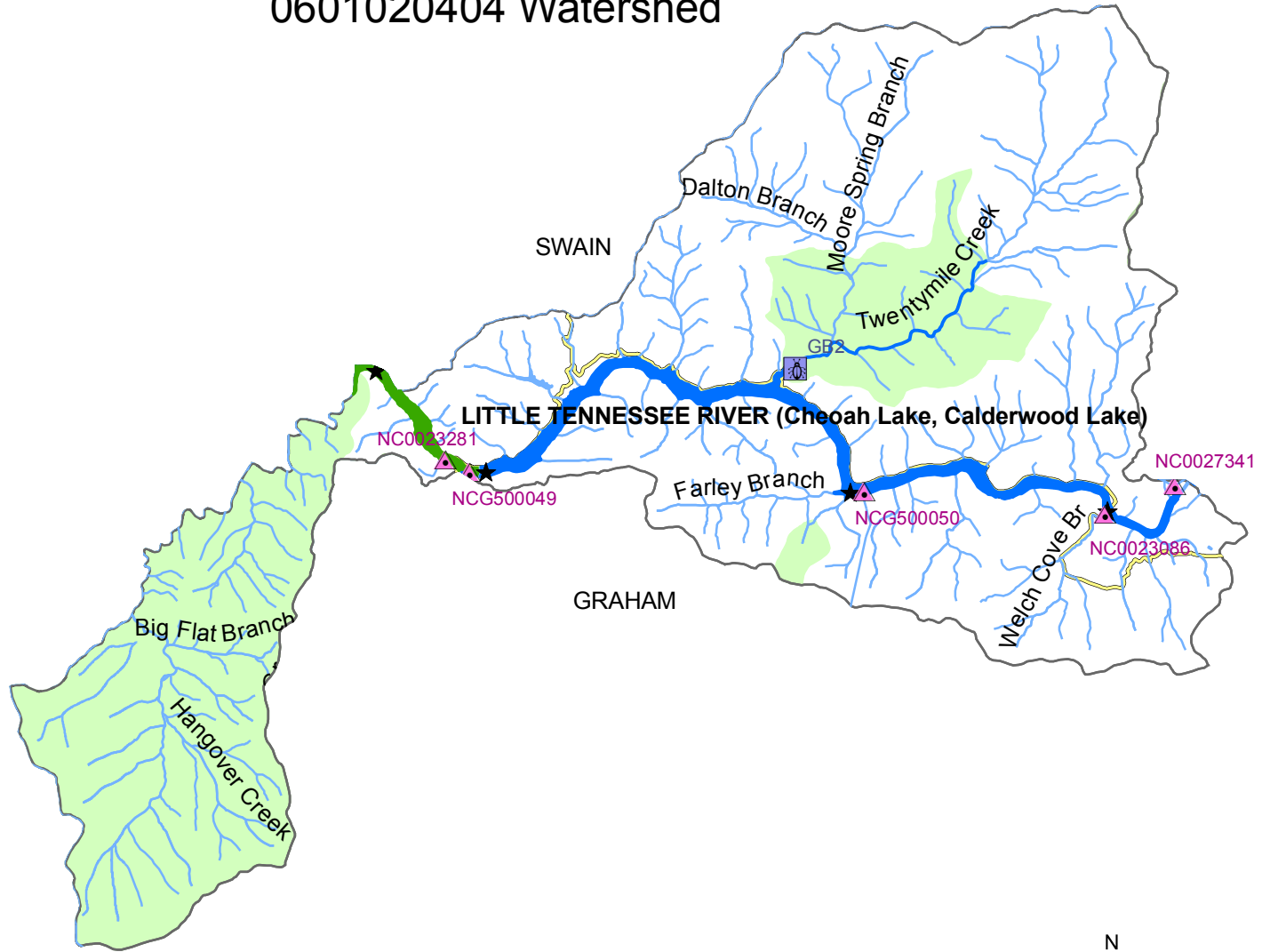
CWMTF Projects

- Acquisition-Buffers
- Acquisition-Greenways
- Easements
- Restoration
- Stormwater
- Wastewater
- Planning

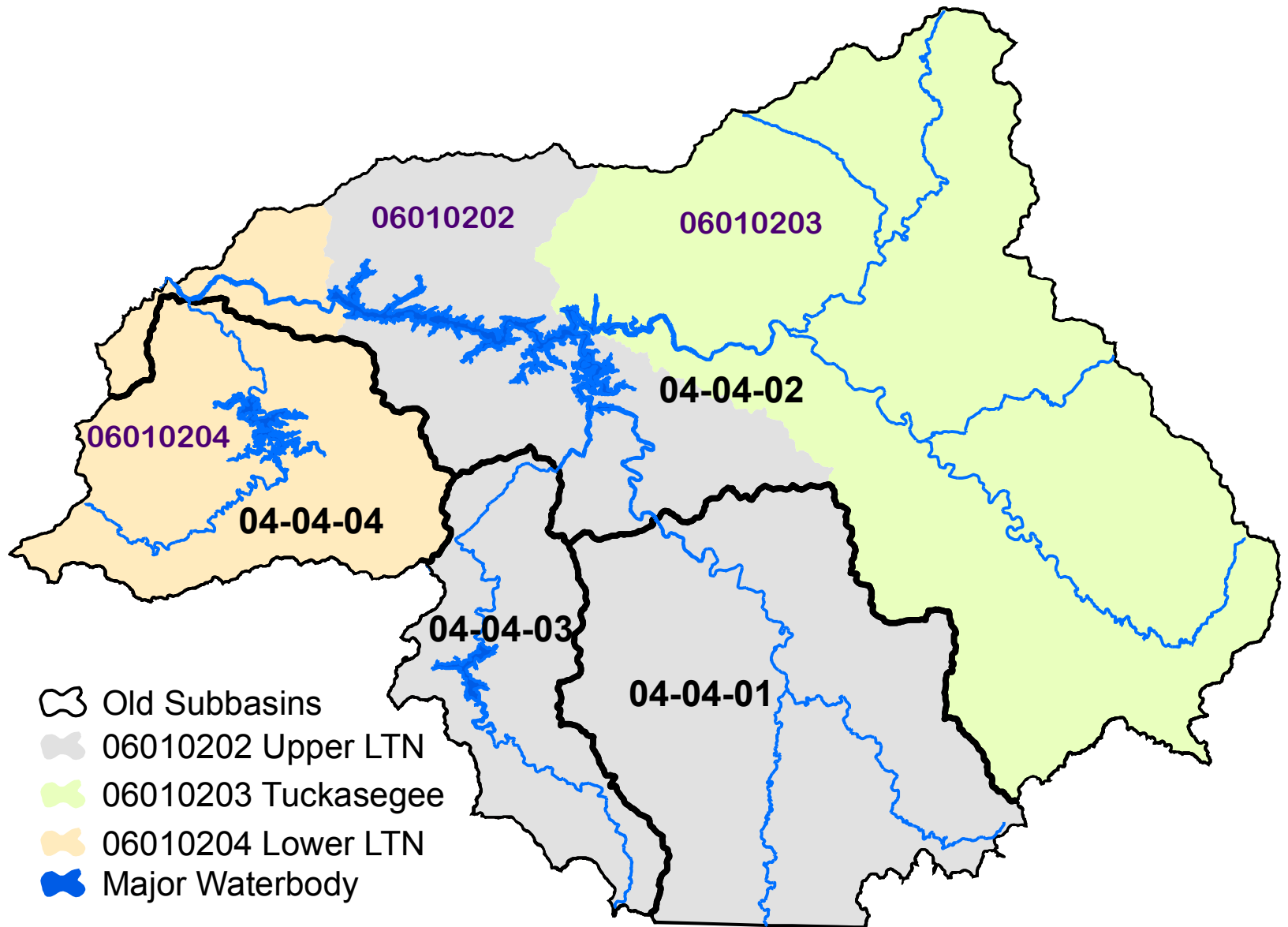
Ag-Cost Share BMPs

- Agri-Chemical Pollution Prevention
- Drought Response
- Erosion/Nutrient Reduction
- Sediment/Nutrient Reduction
- Stream Protection
- Waste Management

0601020404 Watershed



Miles





Legend

- Mississippi River & major tributaries
- ▭ Tennessee River Region

Federal Basin

- ▭ French Broad-Holston
- ▭ Middle Tenn.-Hiwassee
- ▭ Upper Tennessee