

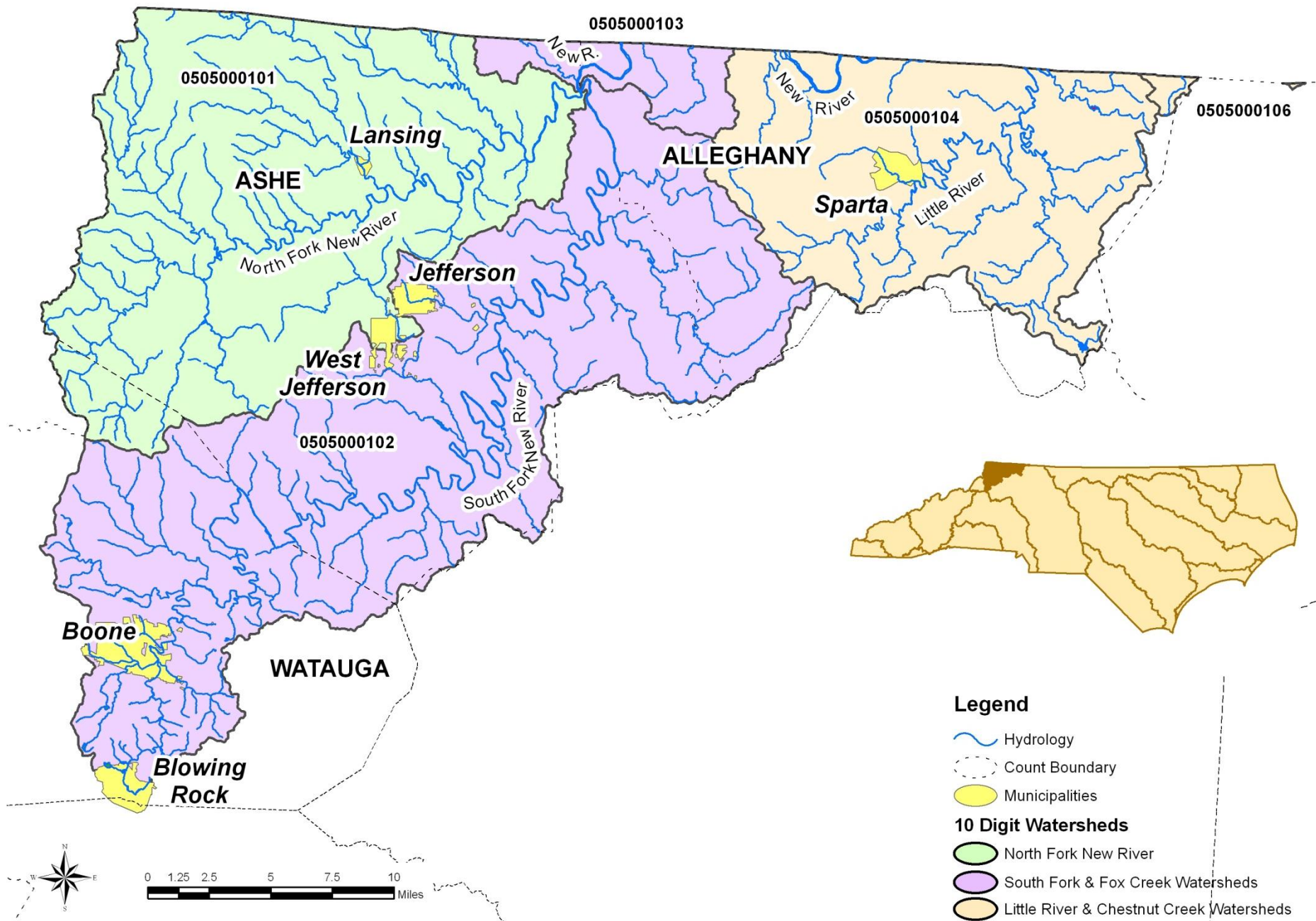
# Requesting Final Approval of 2011 New River Basinwide Water Quality Plan

Melanie Williams

# Presentation Outline

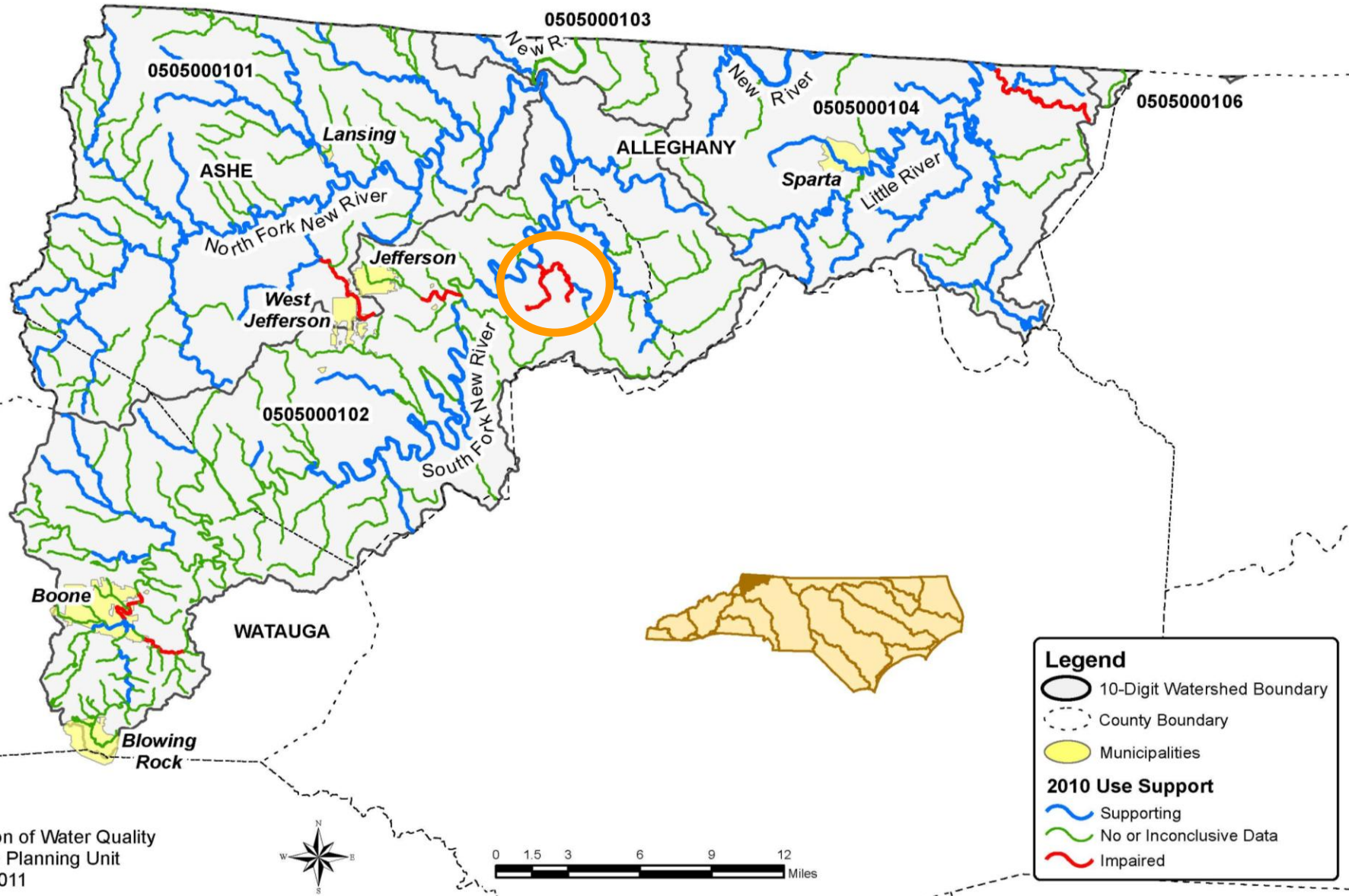
- Overview of Basin
- Impaired Waters
- Water Quality Update
- Issues / Actions / Needs
- Other Actions
- Request final approval

# New River Basin

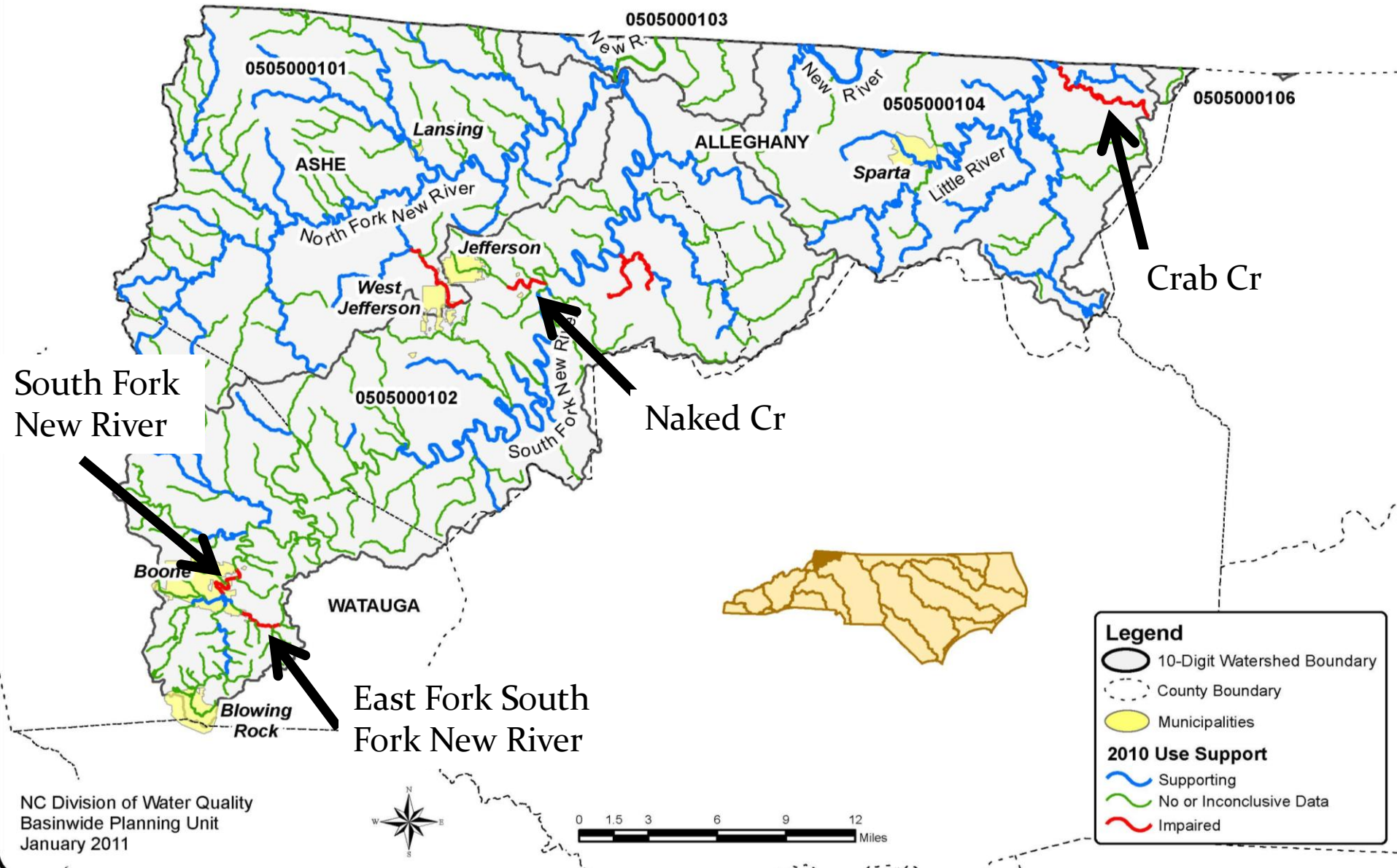




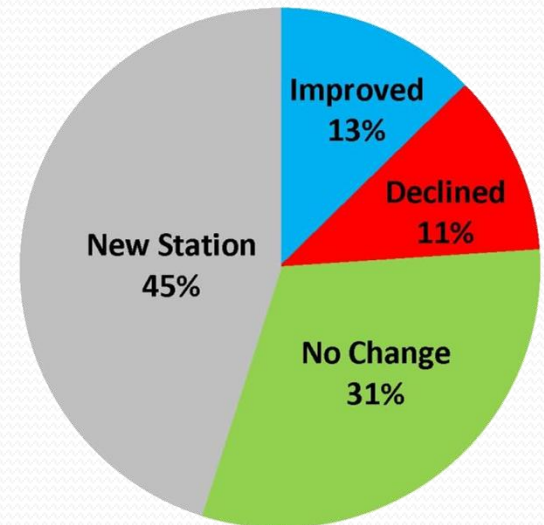
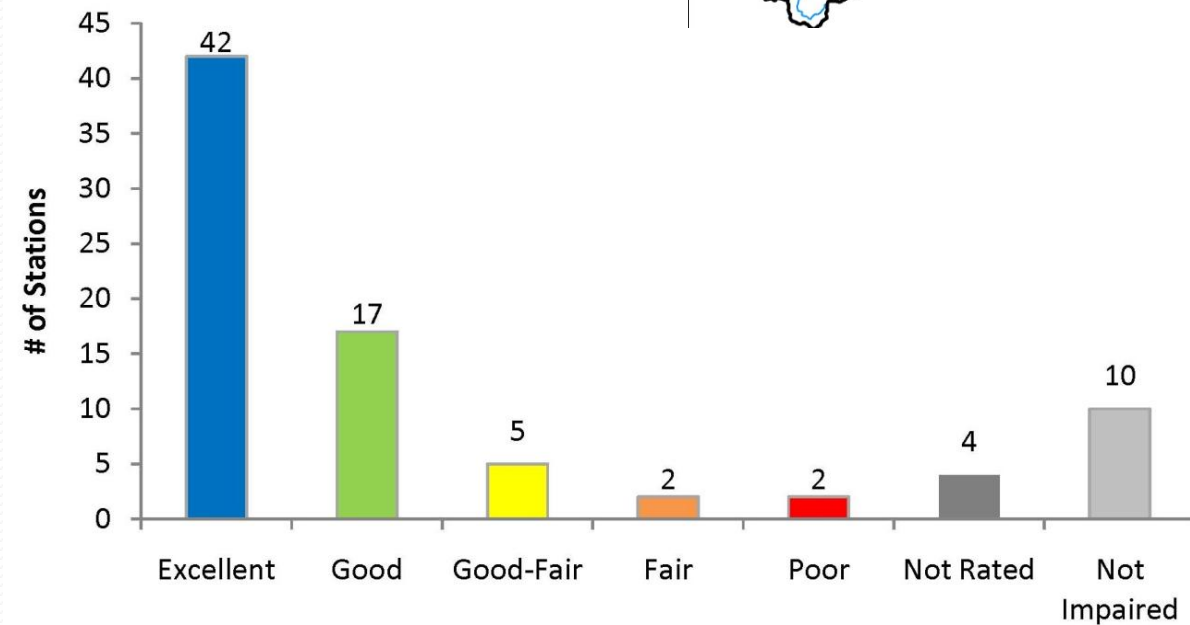
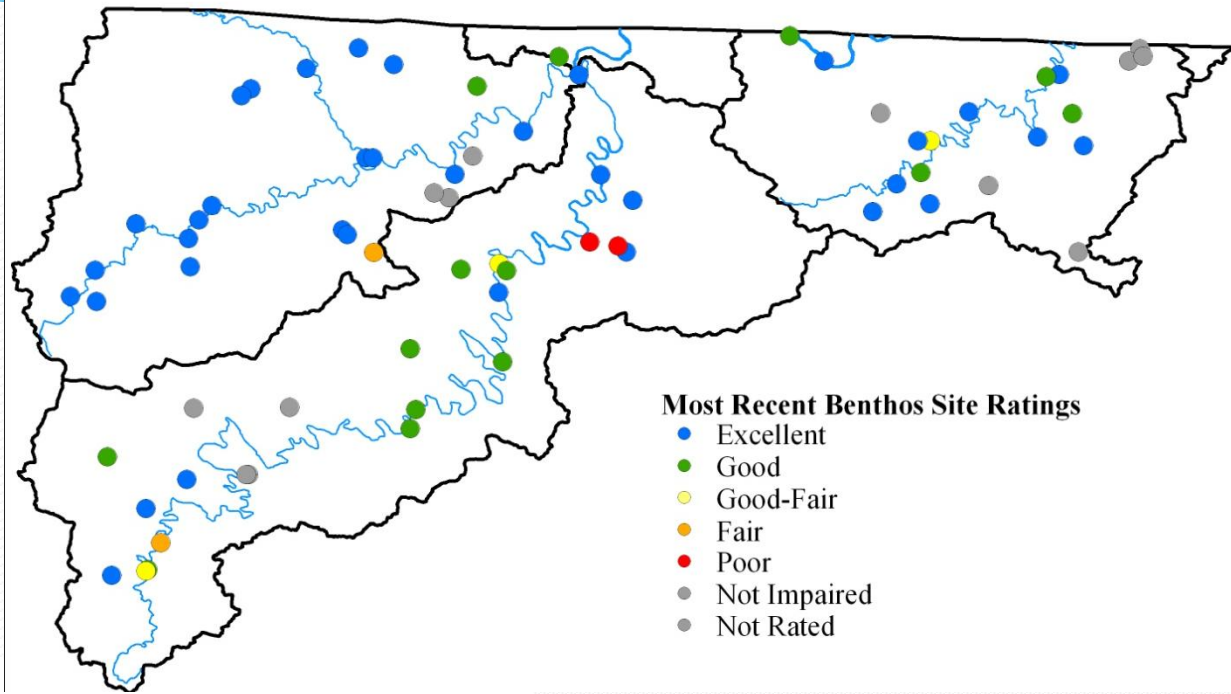
# 2010 Impaired Waters in the New River Basin



# New Impairments During this Cycle

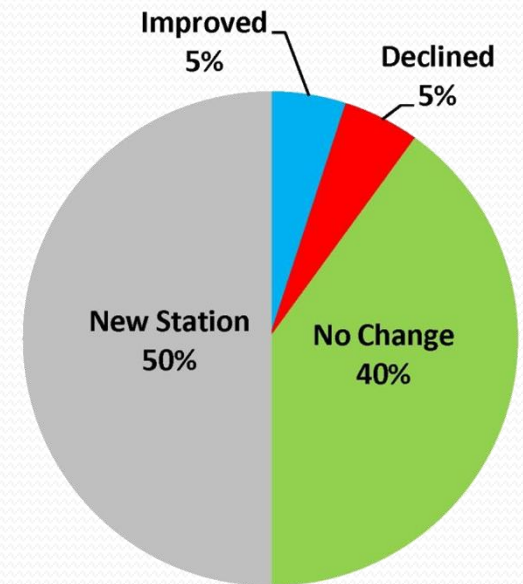
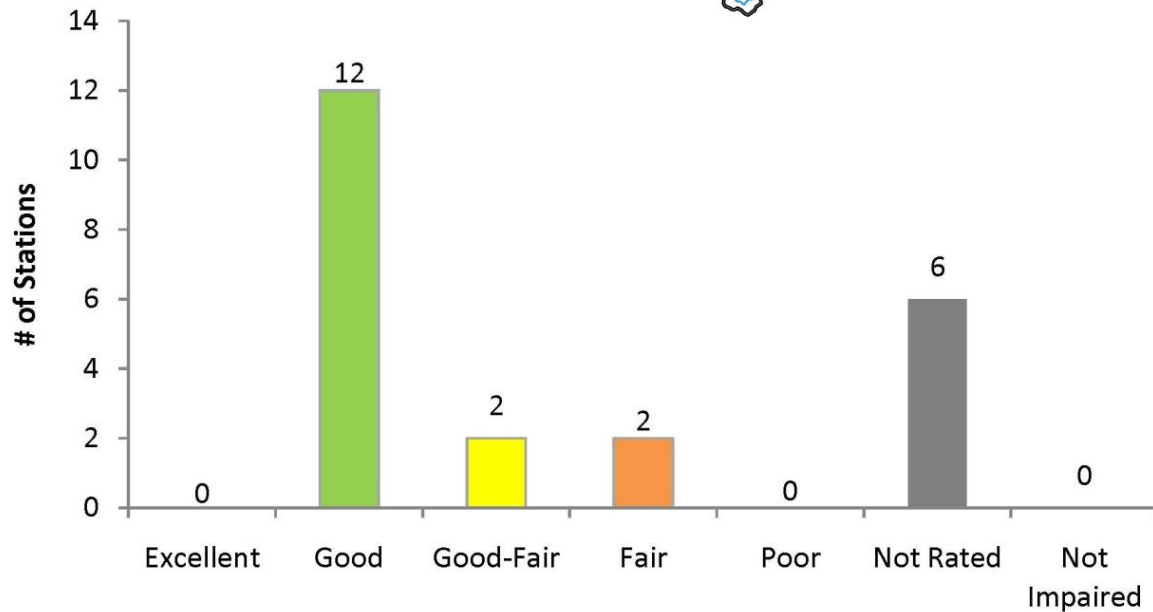
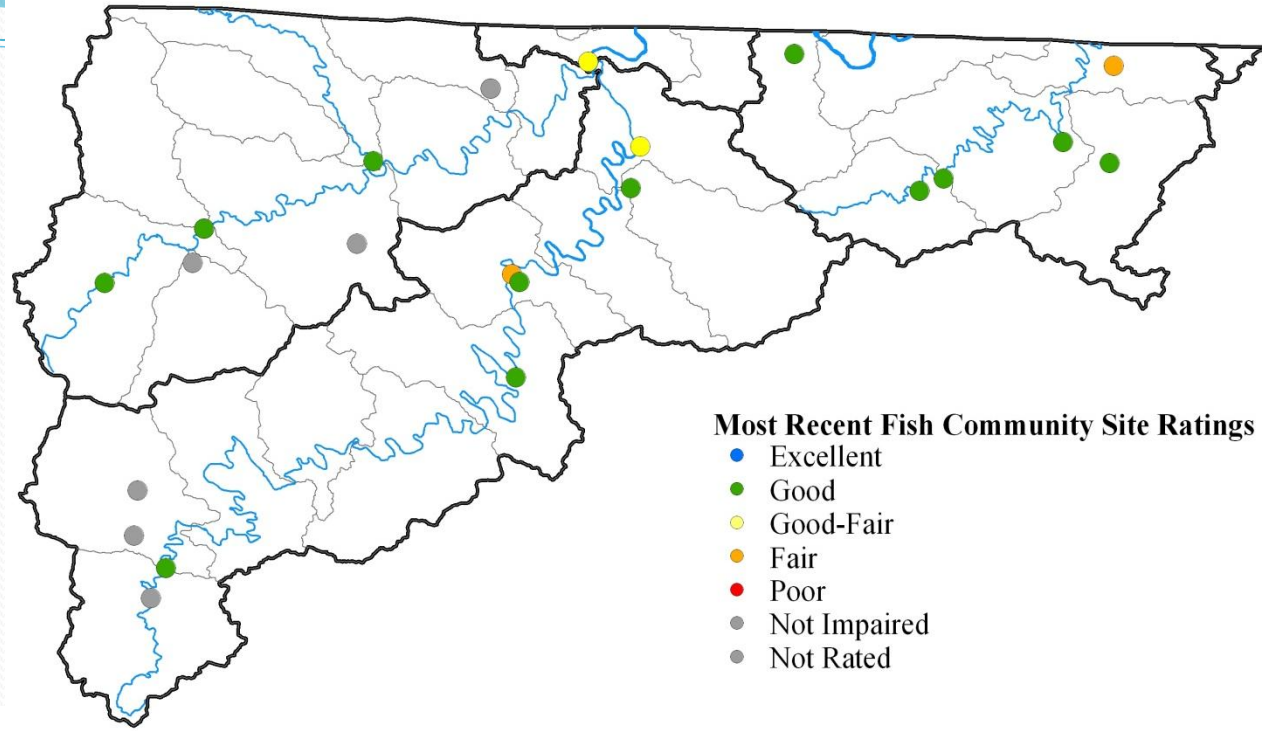


# Benthic Community Health



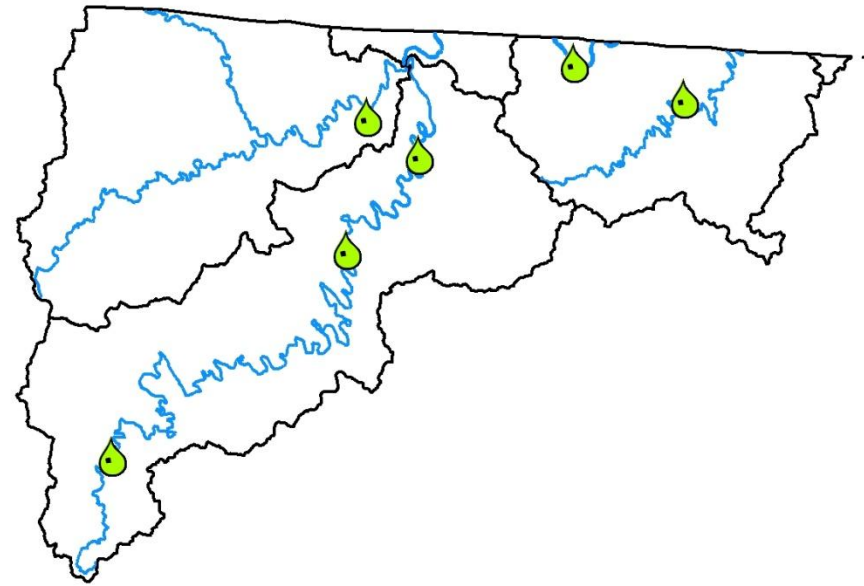


# Fish Community Health



# Physical/Chemical Water Quality Changes

- Turbidity
  - Long term (1998-2009) increasing trend
  - Remains well below state standard
- pH
  - Long term (1998-2009) increasing trend
  - Opposite of what is being seen throughout western NC
- Fecal Coliform Bacteria
  - Increased (2003 & 2007)

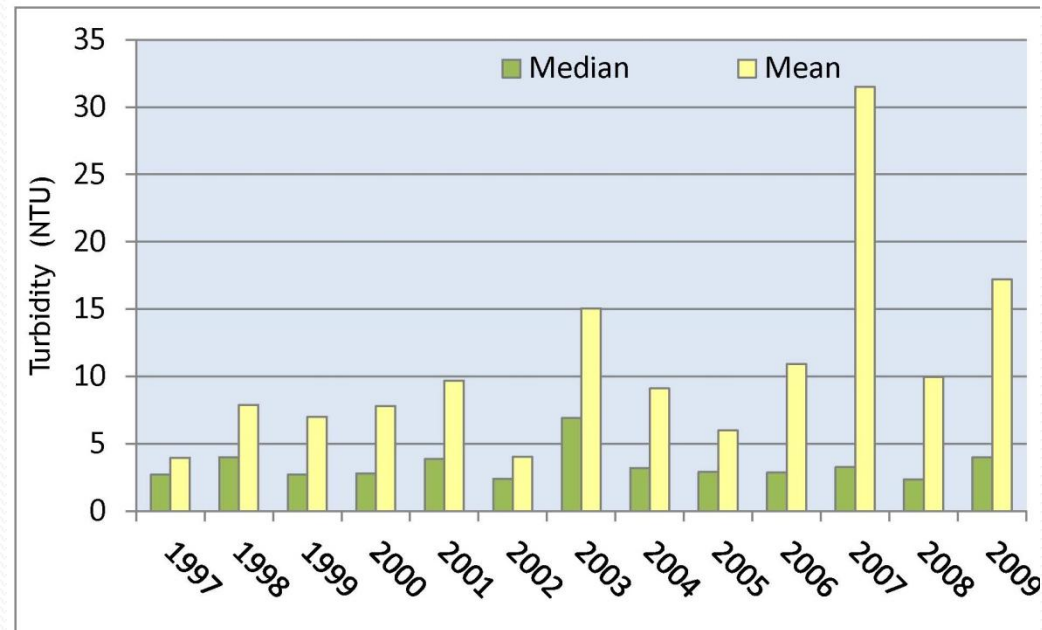




# Physical/Chemical Water Quality Changes

- **Turbidity**
  - Long term (1998-2009) increasing trend
  - Remains well below state standard
- pH
  - Long term (1998-2009) increasing trend
  - Opposite of what is being seen throughout western NC
- Fecal Coliform Bacteria
  - Increased (2003 & 2007)

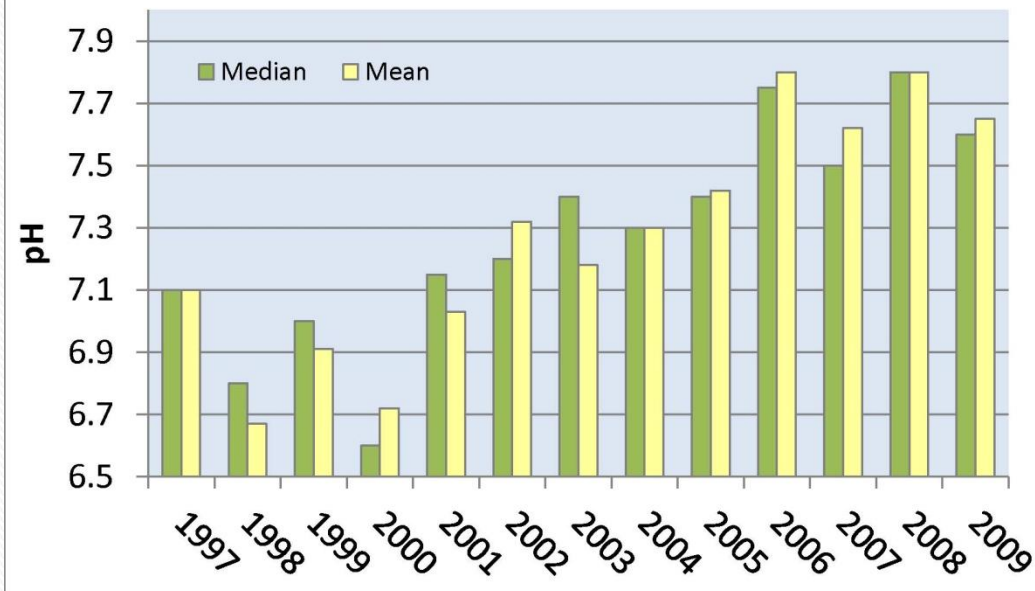
Average Turbidity Levels in the New River Basin



# Physical/Chemical Water Quality Changes

- Turbidity
  - Long term (1998-2009) increasing trend
  - Remains well below state standard
- pH
  - Long term (1998-2009) increasing trend
  - Opposite of what is being seen throughout western NC
- Fecal Coliform Bacteria
  - Increased (2003 & 2007)

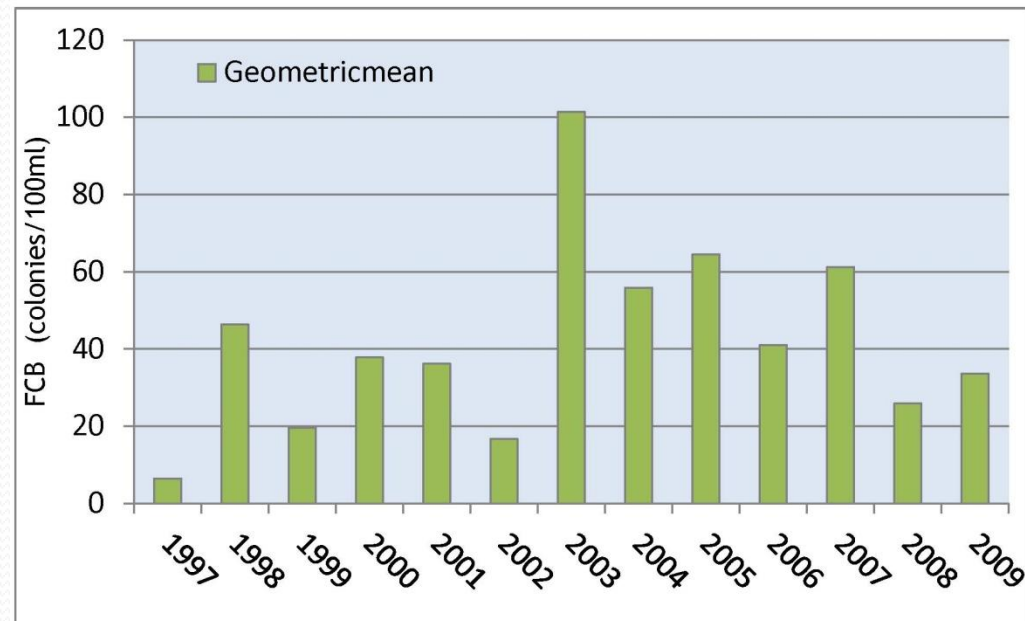
Average pH Levels in the New River Basin



# Physical/Chemical Water Quality Changes

- Turbidity
  - Long term (1998-2009) increasing trend
  - Remains well below state standard
- pH
  - Long term (1998-2009) increasing trend
  - Opposite of what is being seen throughout western NC
- **Fecal Coliform Bacteria**
  - Increased (2003 & 2007)

## Average Fecal Coliform Bacteria Levels in the New River Basin





# Issues / Actions / Needs

Issues	Actions	Basin Needs
Sedimentation		
Rising pH Levels		
Elevated Fecal Coliform Bacteria		

# Issues / Actions / Needs

Issues	Actions	Basin Needs
Sedimentation	Fence out livestock; Education of Ag BMPs; WSRO reducing sediment from construction sites; Working with local watershed groups	
Rising pH Levels		
Elevated Fecal Coliform Bacteria	Fence out livestock	

# Issues / Actions / Needs

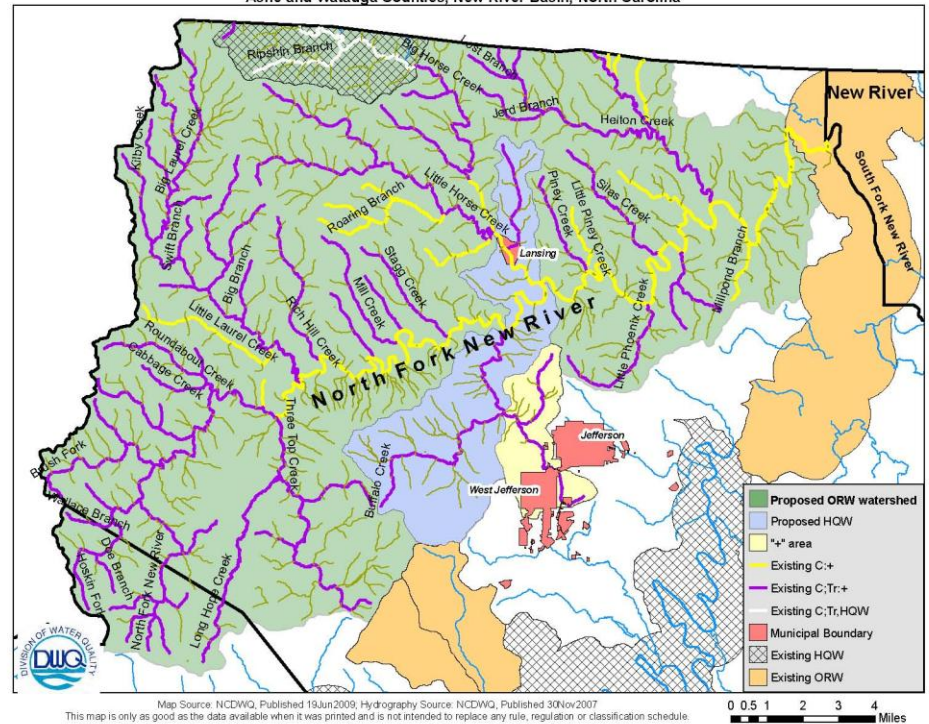
Issues	Actions	Basin Needs
Sedimentation	Fence out livestock; Education of Ag BMPs; WSRO reducing sediment from construction sites; Working with local watershed groups	Pinpoint Turbidity Sources  Riparian & Trout Water Buffers Education
Rising pH Levels		Determine Cause of Increasing pH
Elevated Fecal Coliform Bacteria	Fence out livestock	Identify Failing Septic Systems/Straight Pipes  Continue fencing out livestock efforts



# Other Actions

- Formation of the New River Basin Monitoring Coalition
- Reclassified waters to Outstanding Resource Waters and High Quality Waters in the North Fork New River.
- Ore Knob Mine

North Fork New River ORW/HQW Reclassification  
Ashe and Watauga Counties, New River Basin, North Carolina





An aerial photograph of a valley. In the center, a small town with various buildings and parking lots is visible. The town is surrounded by green fields and dense forests. In the background, rolling hills and mountains are visible under a blue sky with some clouds. The text is overlaid on the upper half of the image.

# Request Final Approval of the 2011 New River Basinwide Water Quality Plan

Questions?