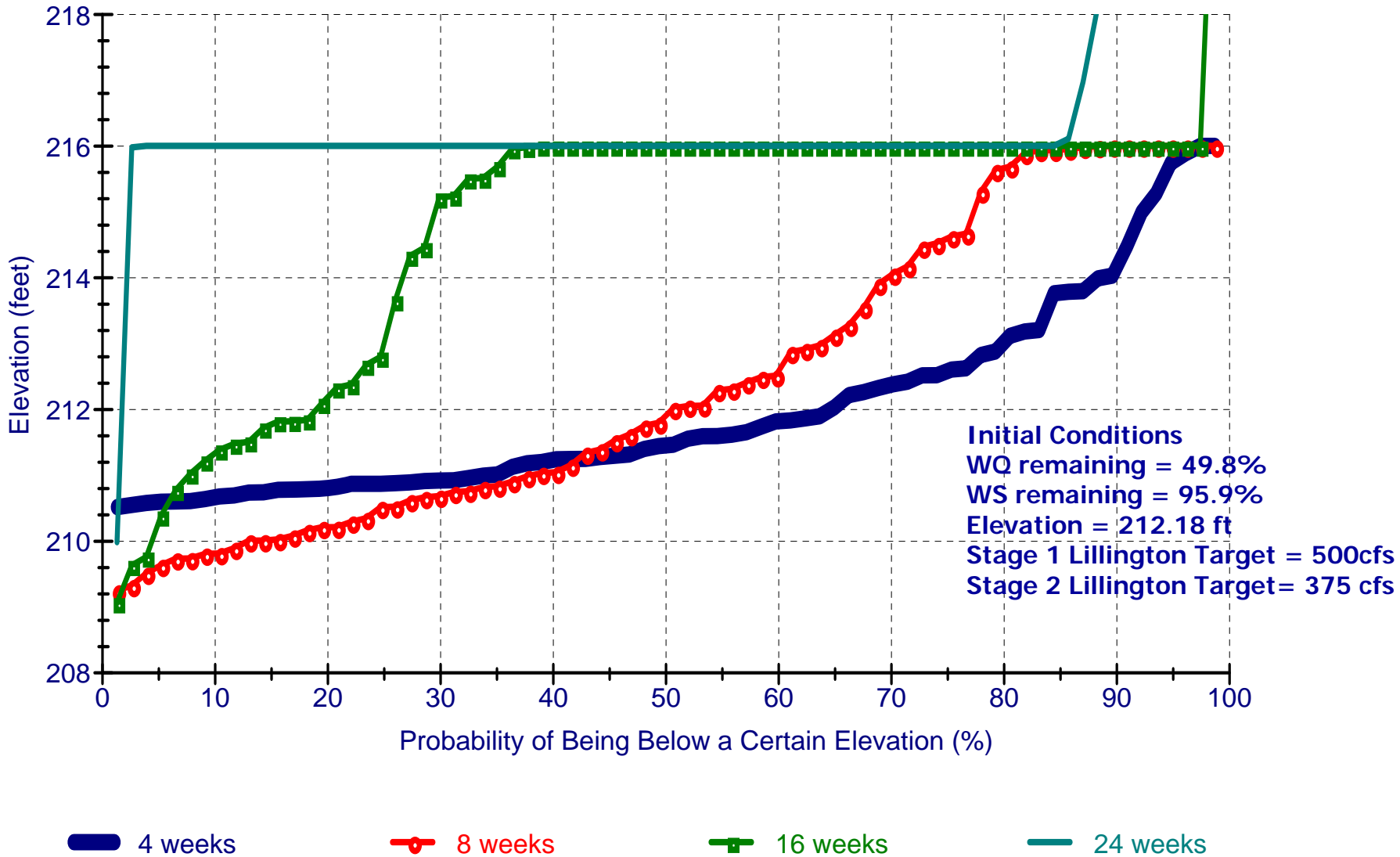


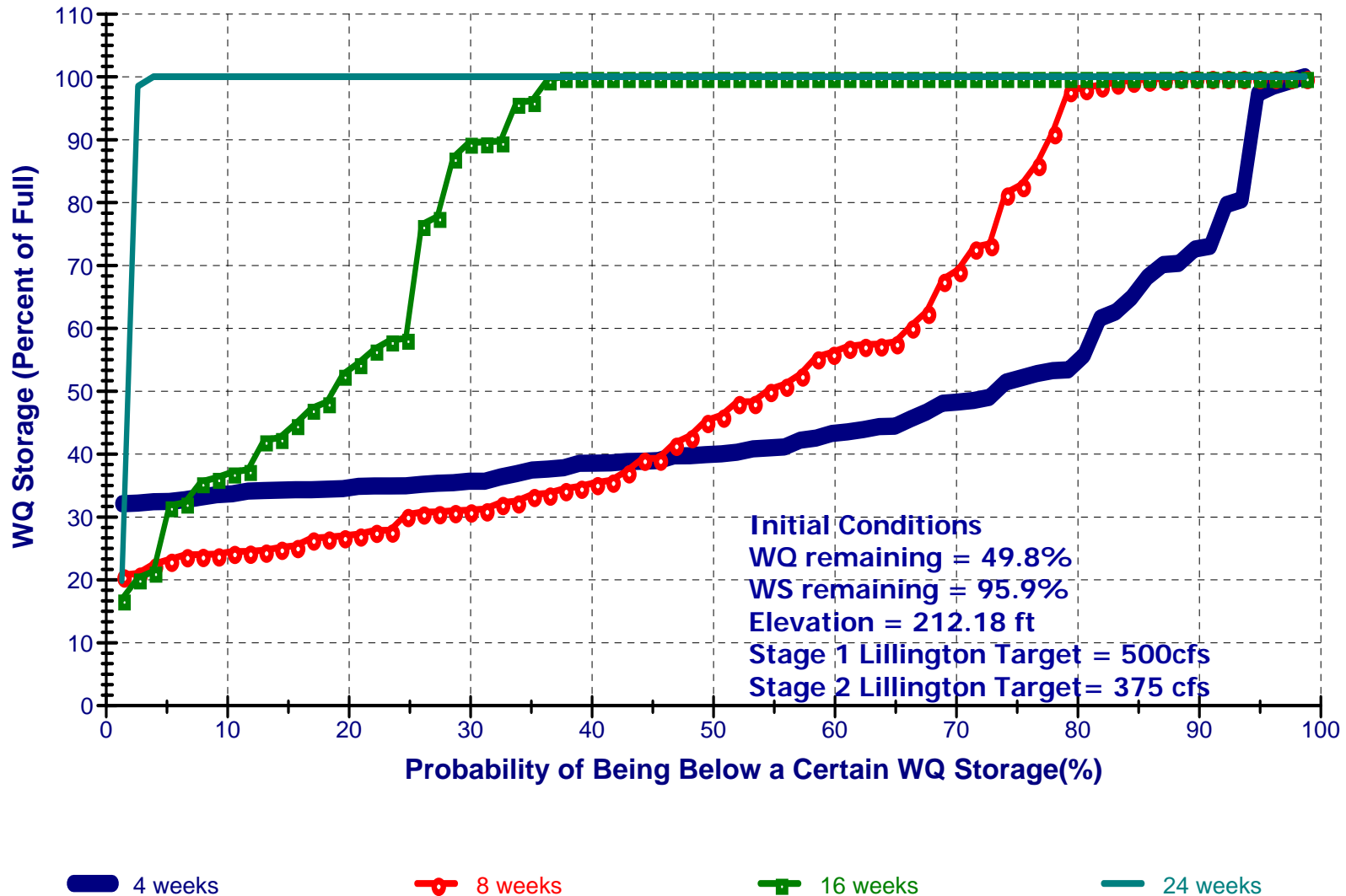
Jordan Lake Elevation in 4, 8, 16, and 24 Weeks

09_07_2007_cond_DP_Init_WQ_int_WS_Ver2

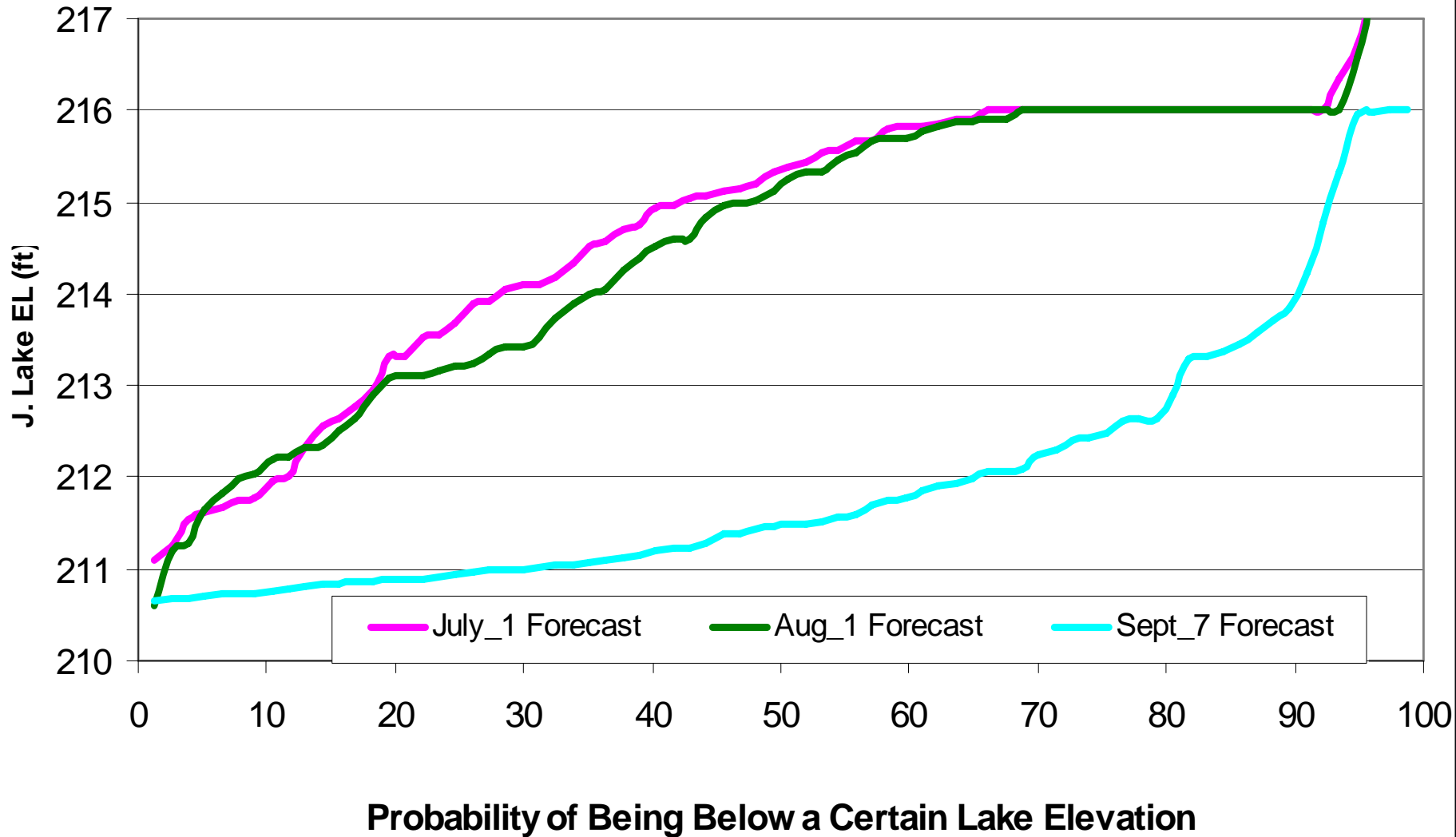


Jordan Lake WQ Storage in 4, 8, 16, and 24 Weeks

09_07_2007_cond_DP_Init_WQ_int_WS_Ver2

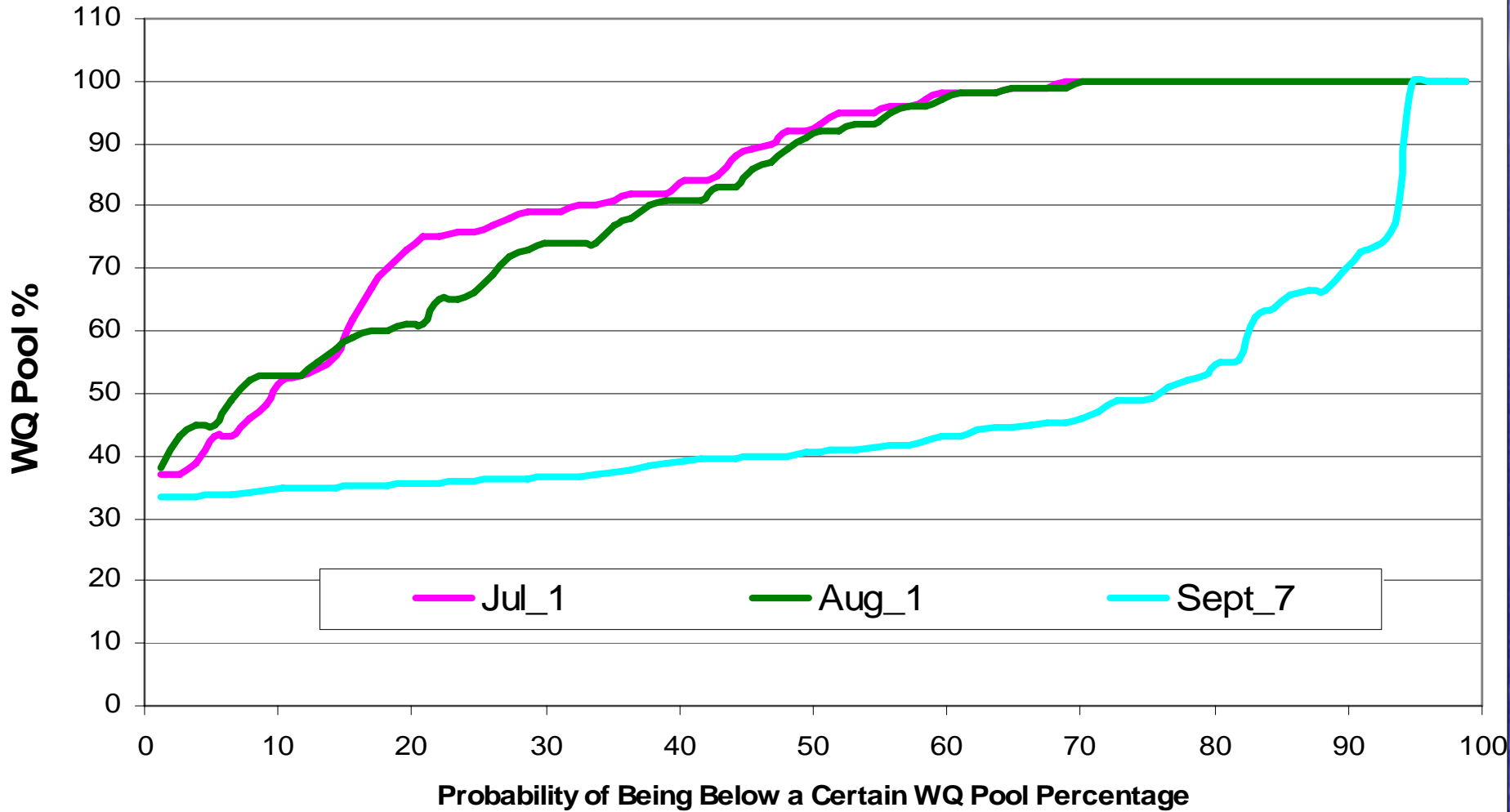


OASIS Jordan Lake Elevation October 1 Forecast

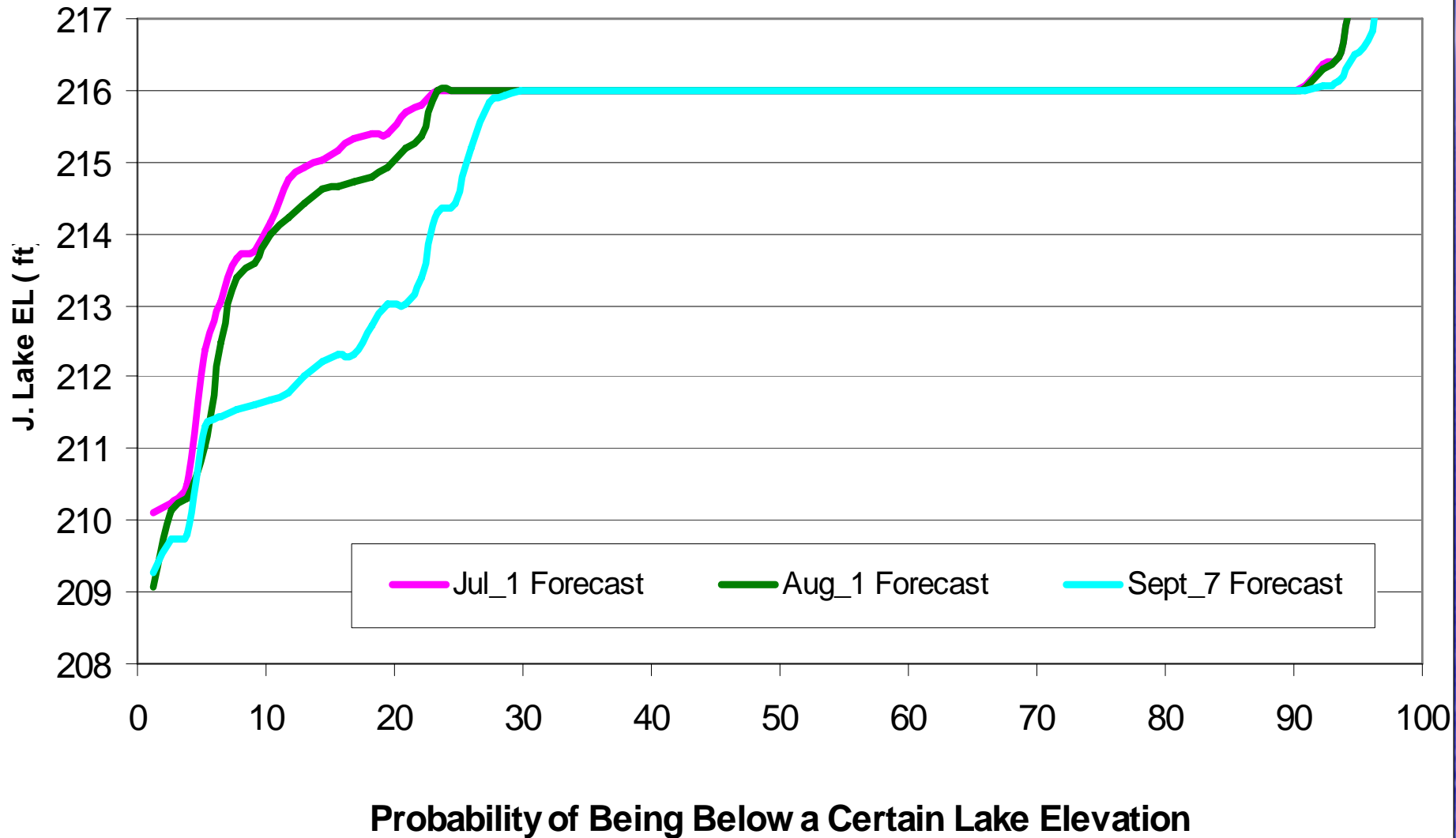


OASIS Jordan Lake WQ Pool

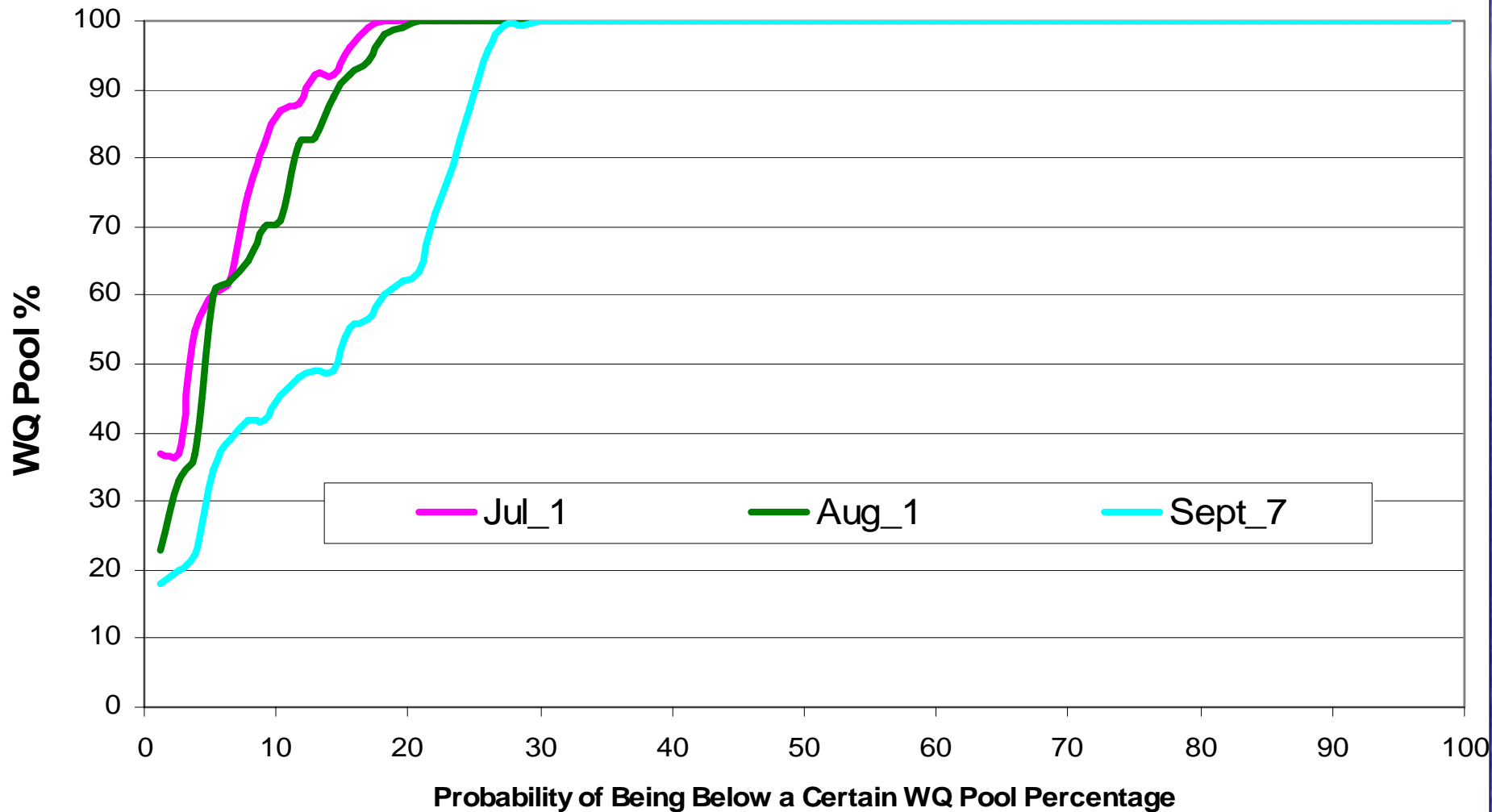
October 1 2007 Forecast



OASIS Jordan Lake Elevation January 1 2008 Forecast

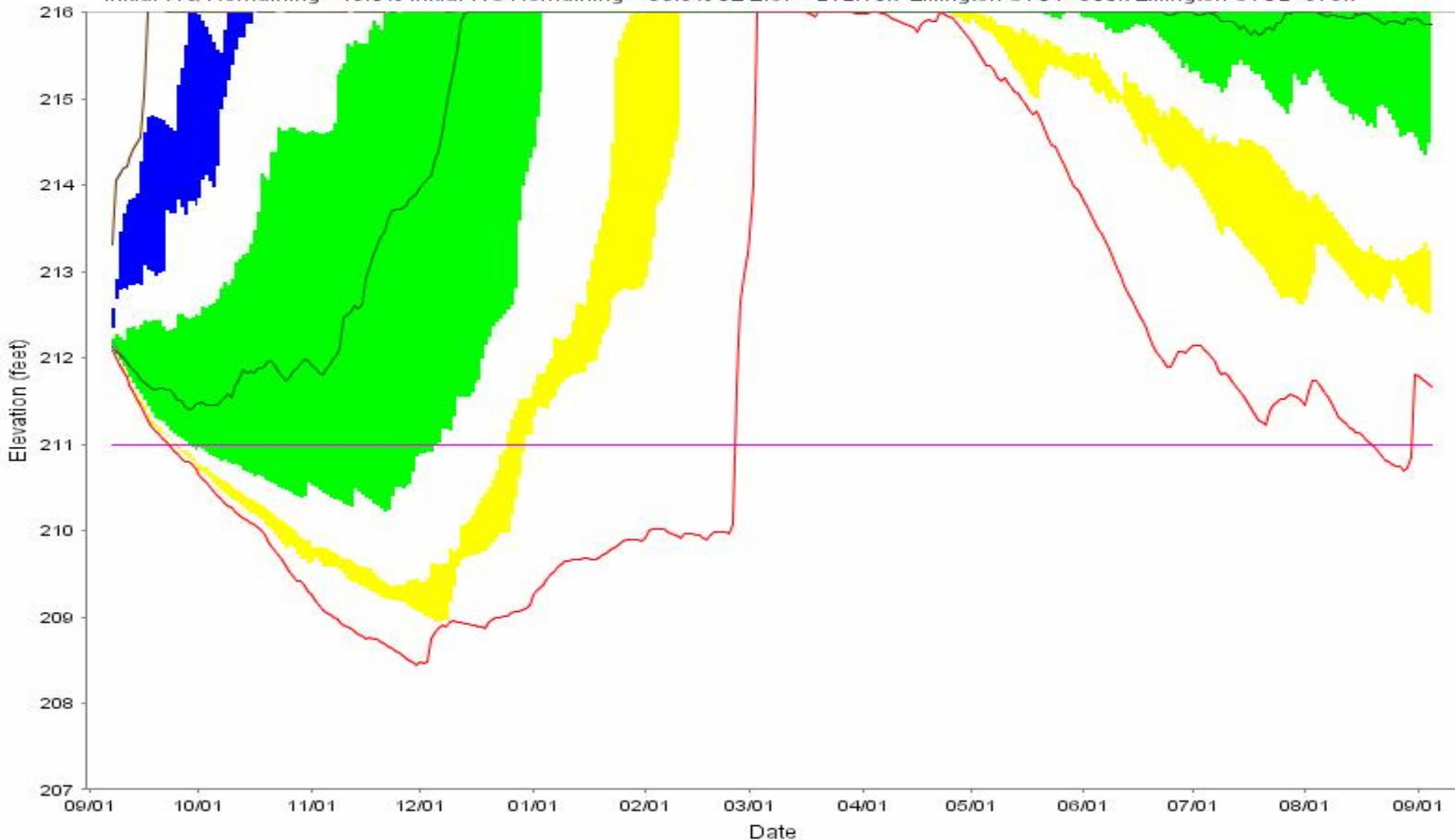


OASIS Jordan Lake WQ Pool January 1 2008 Forecast



Jordan Lake Elevation Forecast

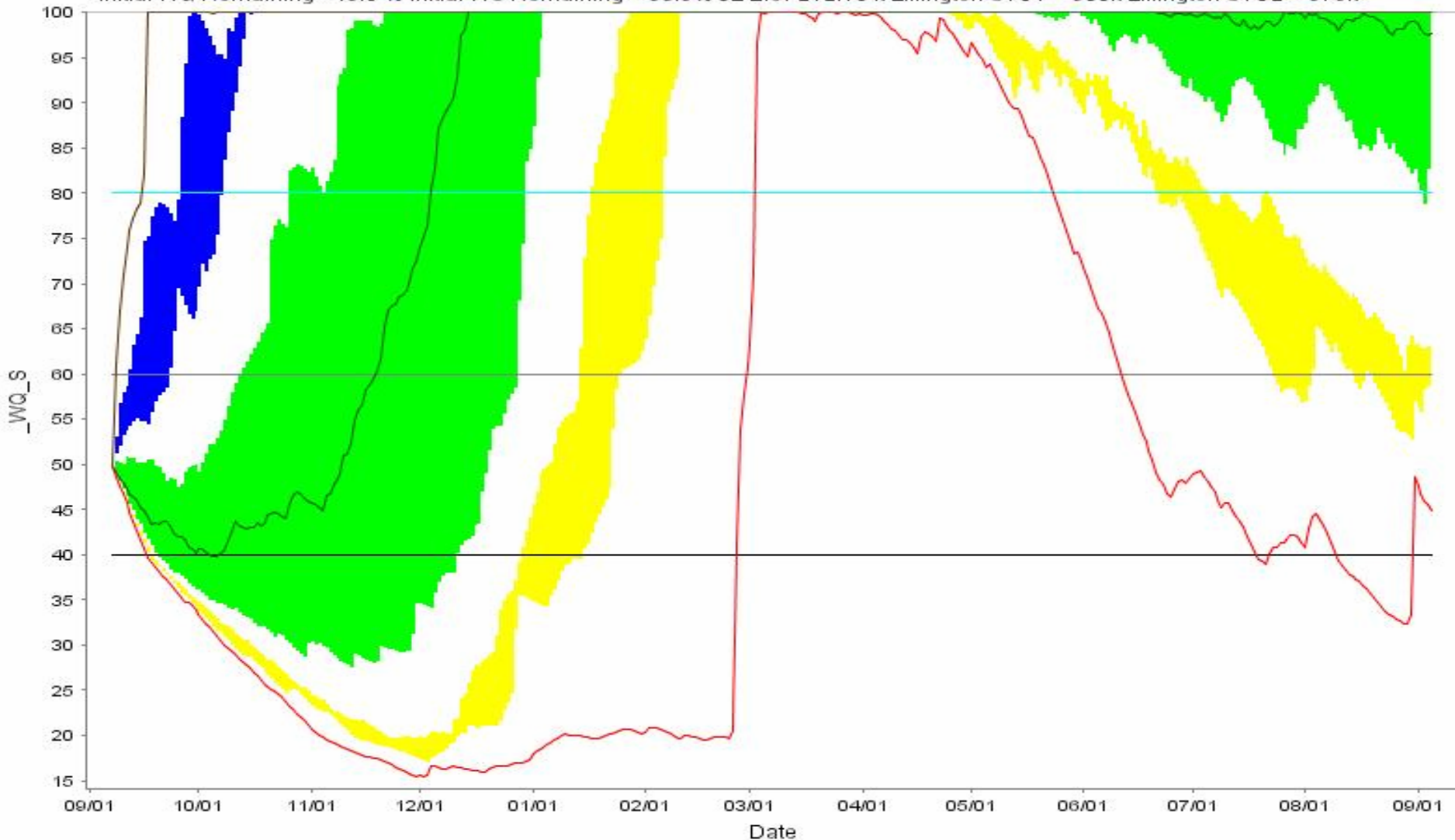
Initial WQ Remaining = 49.8% Initial WS Remaining = 95.9% JL Elev = 212.18ft Lillington STG1=500ft Lillington STG2=375ft



- Min — Median — Max — 211 feet — Actual Jordan Elevation
- YELLOW (LOWER) BAND = 5- TO 10-PERCENTILE
- GREEN (MIDDLE) BAND = 25- TO 75-PERCENTILE
- BLUE (UPPER) BAND = 90- TO 95-PERCENTILE

Percent remaining in the water quality pool

Initial WQ Remaining = 49.8 % Initial WS Remaining = 95.9% JL Elev 212.18 ft Lillington STG1 = 500ft Lillington STG2 = 375ft



- Min — Median — Max — 40 — 60 — 80
- YELLOW (LOWER) BAND = 5- TO 10-PERCENTILE
- GREEN (MIDDLE) BAND = 25- TO 75-PERCENTILE
- BLUE (UPPER) BAND = 90- TO 95-PERCENTILE

	Probability (%) of being at or below		
Date	JL Elev 211ft	60% WQ	40% WQ
15-Sep	1.3	93.5	1.3
1-Oct	31.2	83.1	48.1
15-Oct	36.4	74.0	45.5
1-Nov	39.0	66.2	46.8
15-Nov	29.9	53.2	37.7
1-Dec	26.0	40.2	28.6
15-Dec	14.3	32.5	23.4
1-Jan	5.2	18.2	7.8