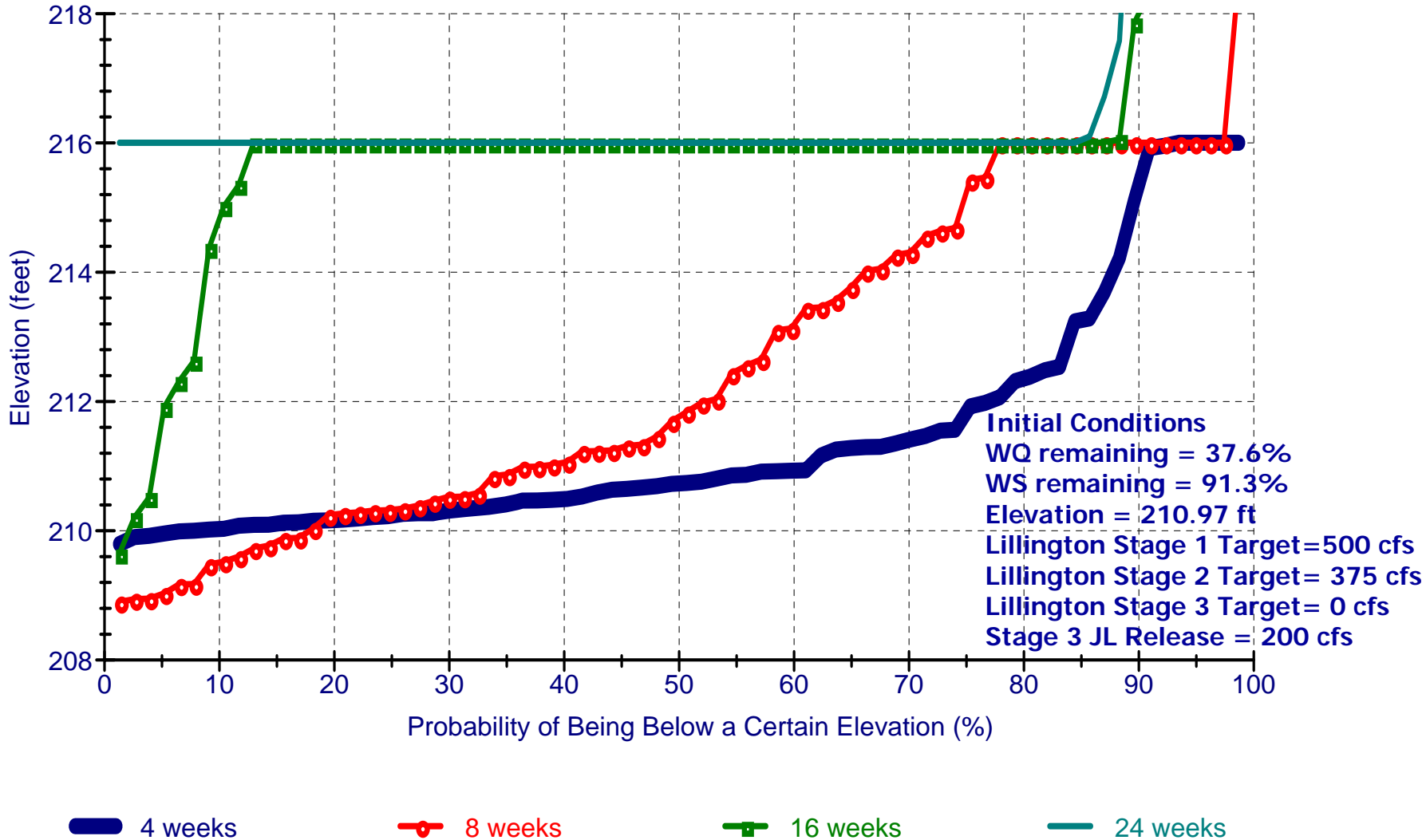


Jordan Lake Elevation in 4, 8, 16, and 24 Weeks

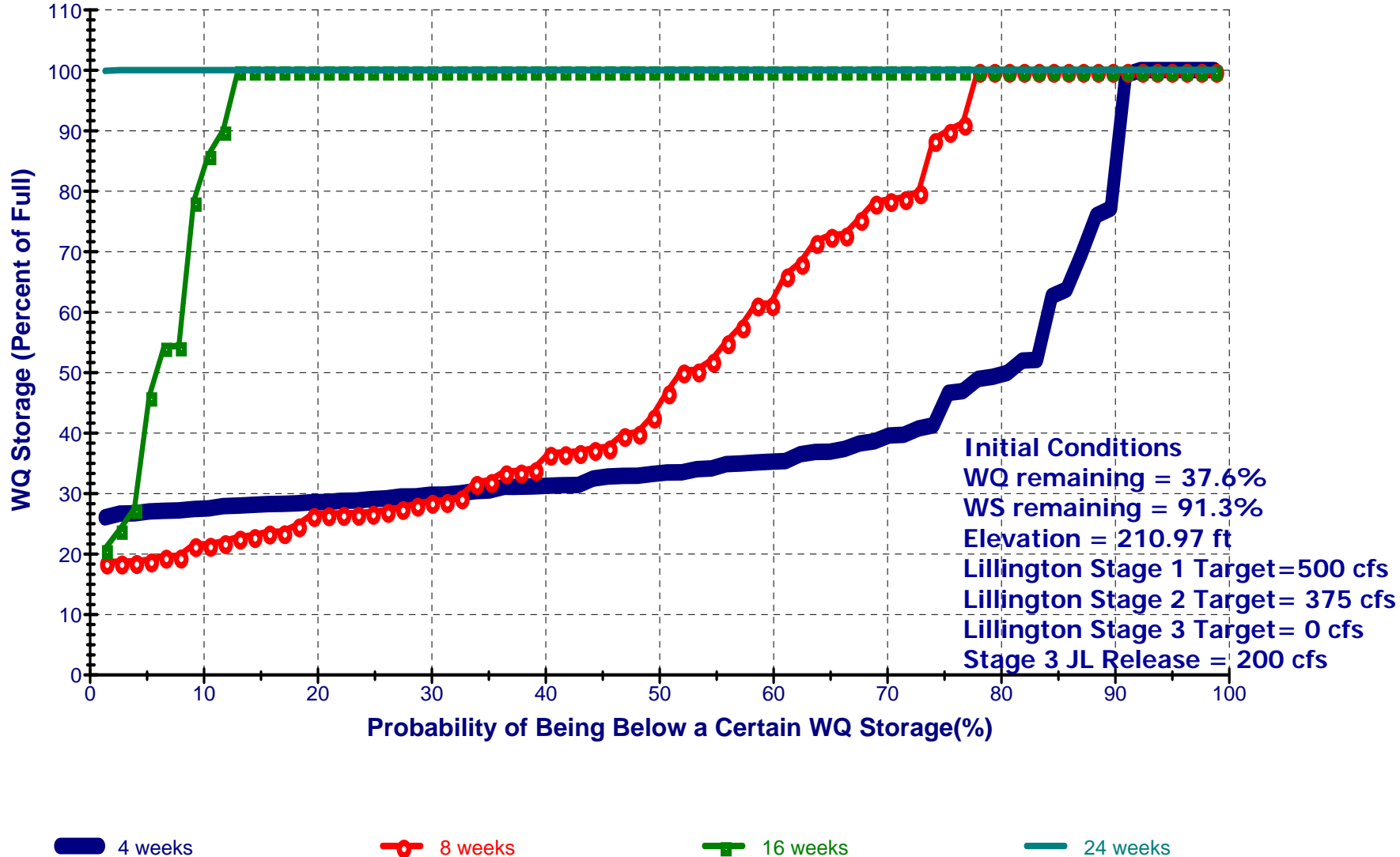
10_05_2007_cond_DP_Init_WS



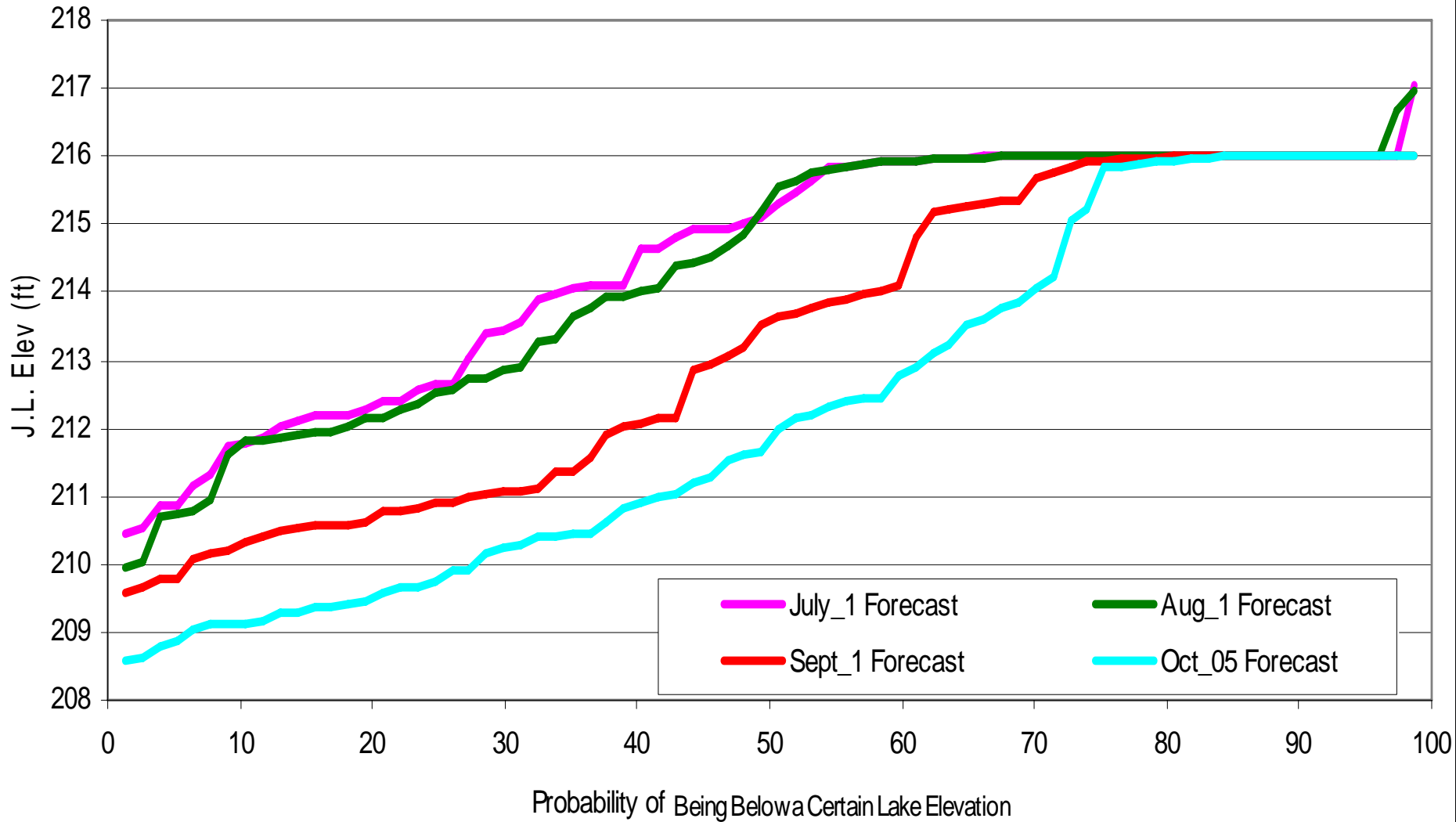
Jordan Lake Model – 10-05-2007 Forecast

Jordan Lake WQ Storage in 4, 8, 16, and 24 Weeks

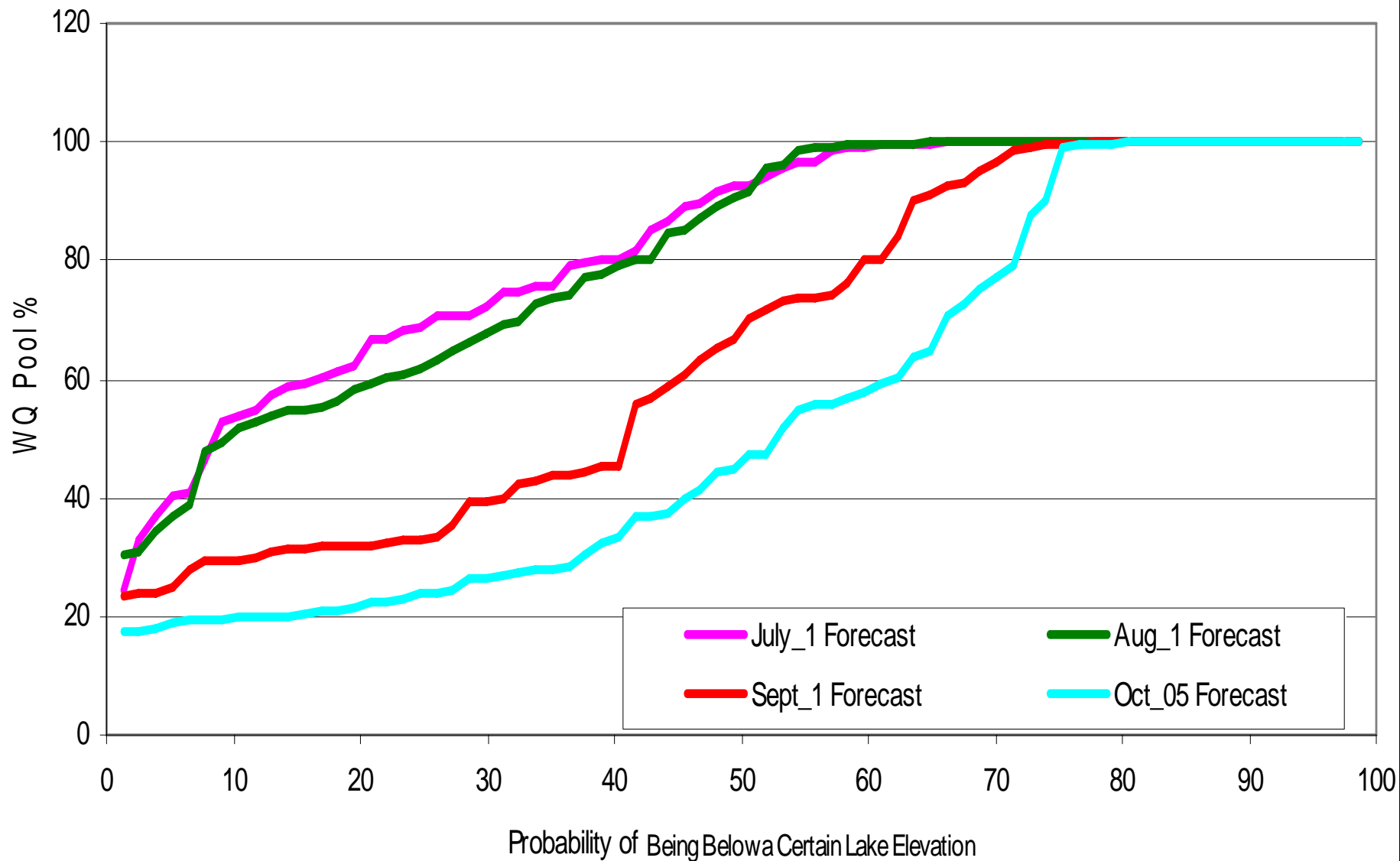
10_05_2007_cond_DP_Init_WS



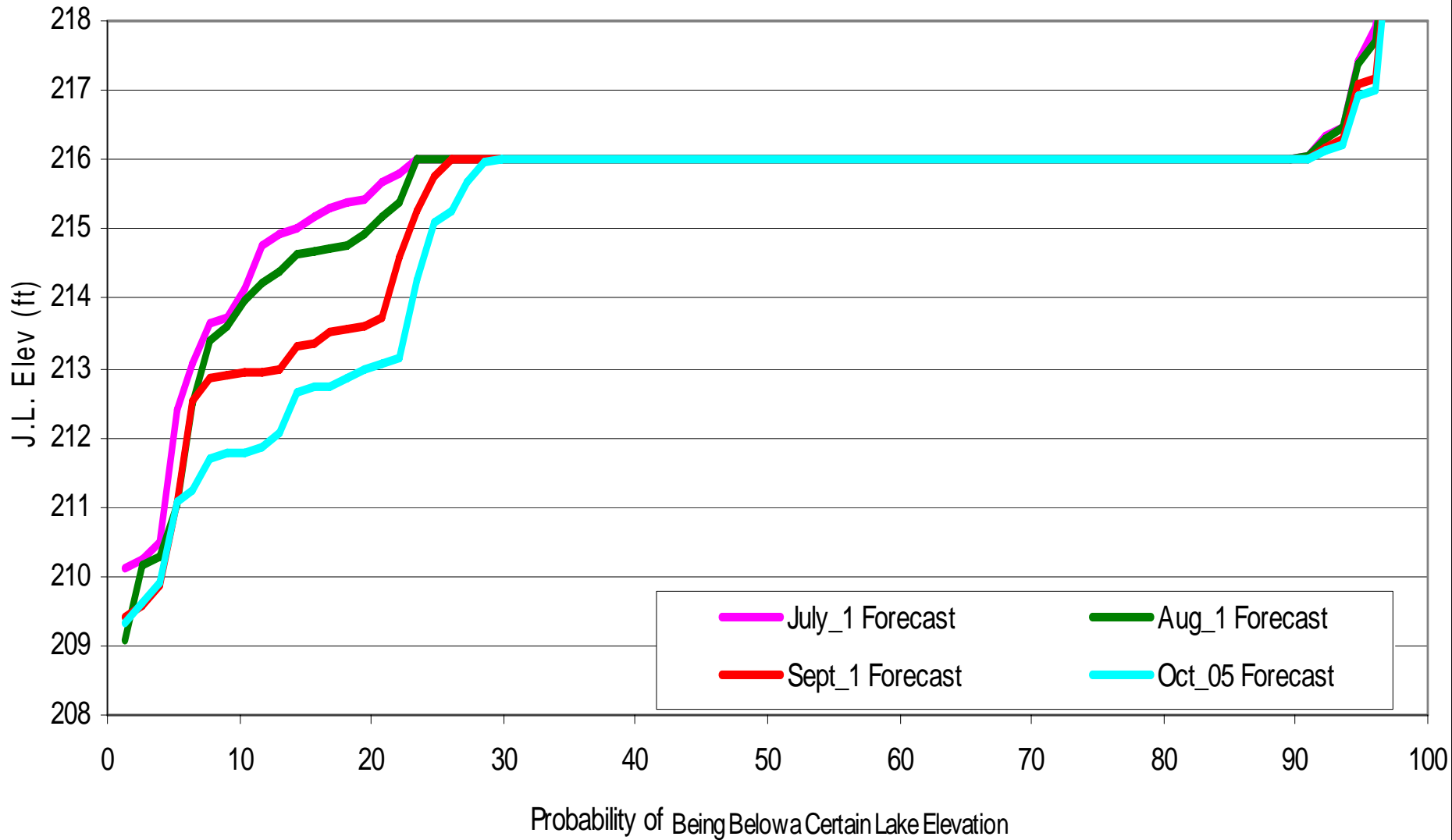
OASIS Jordan Lake Elevation November 1 Forecast



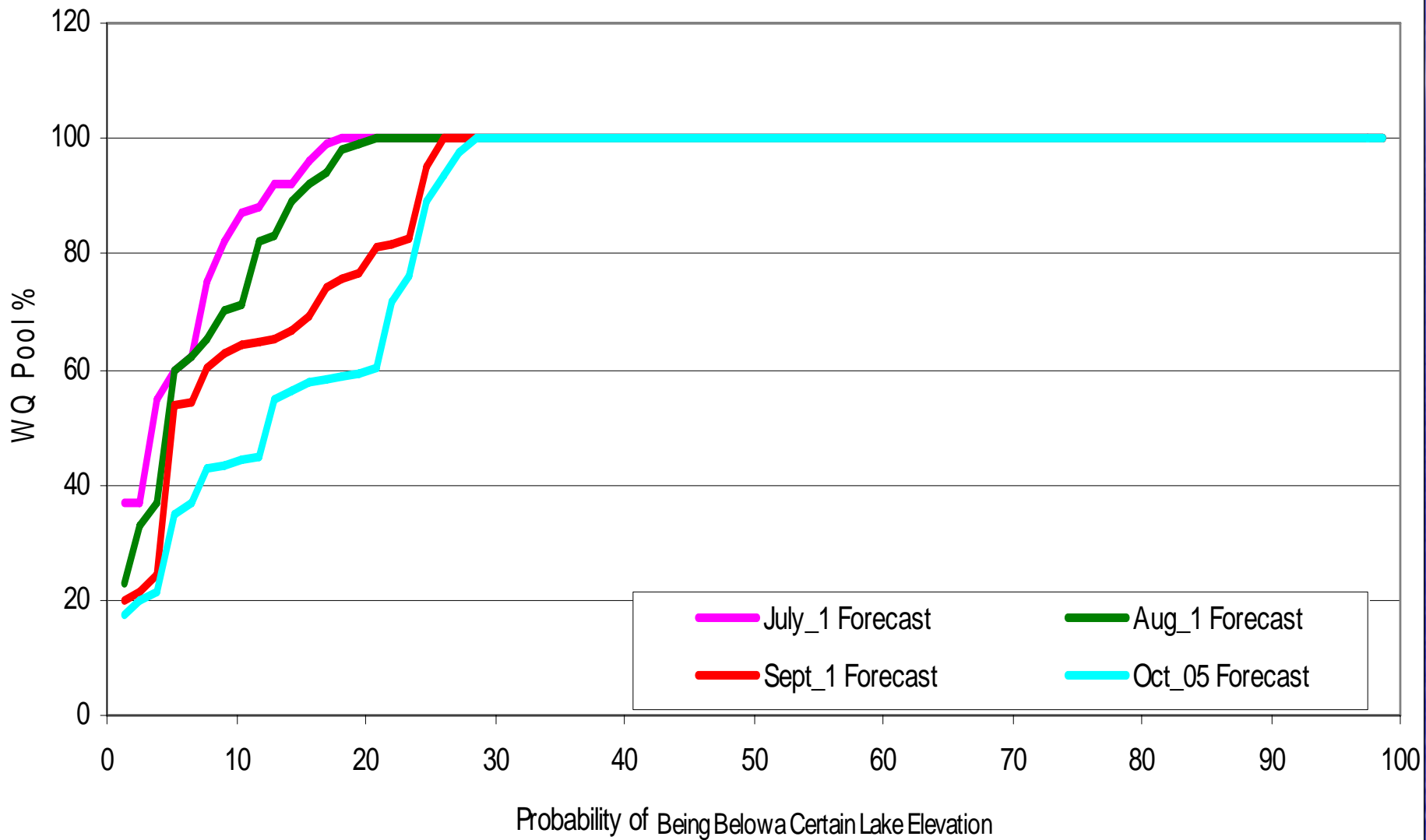
OASIS Jordan Lake WQ Pool November 1 Forecast



OASIS Jordan Lake Elevation Jan 1 2008 Forecast

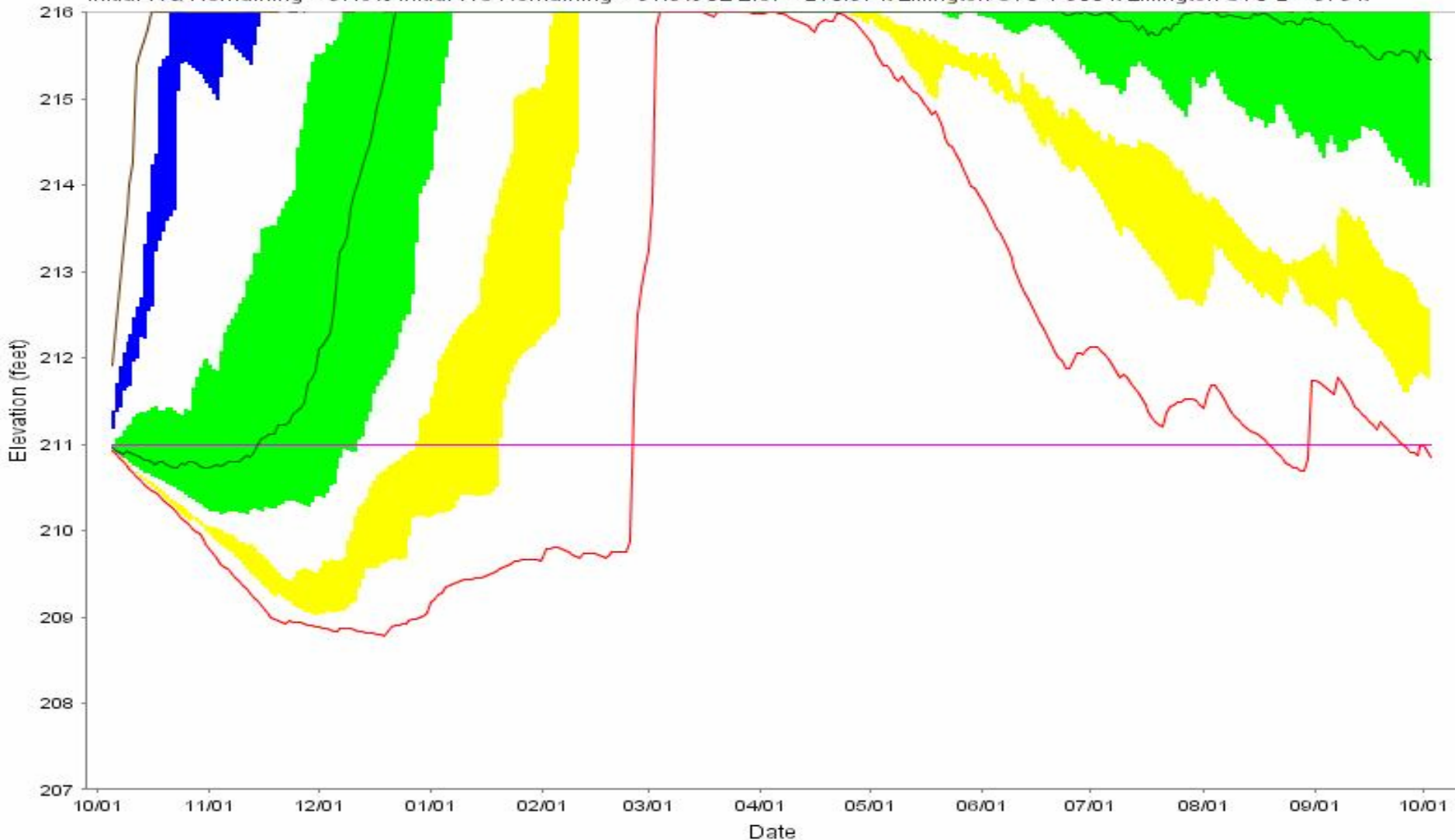


OASIS Jordan Lake WQ Pool Jan 1 2008 Forecast



Jordan Lake Elevation Forecast

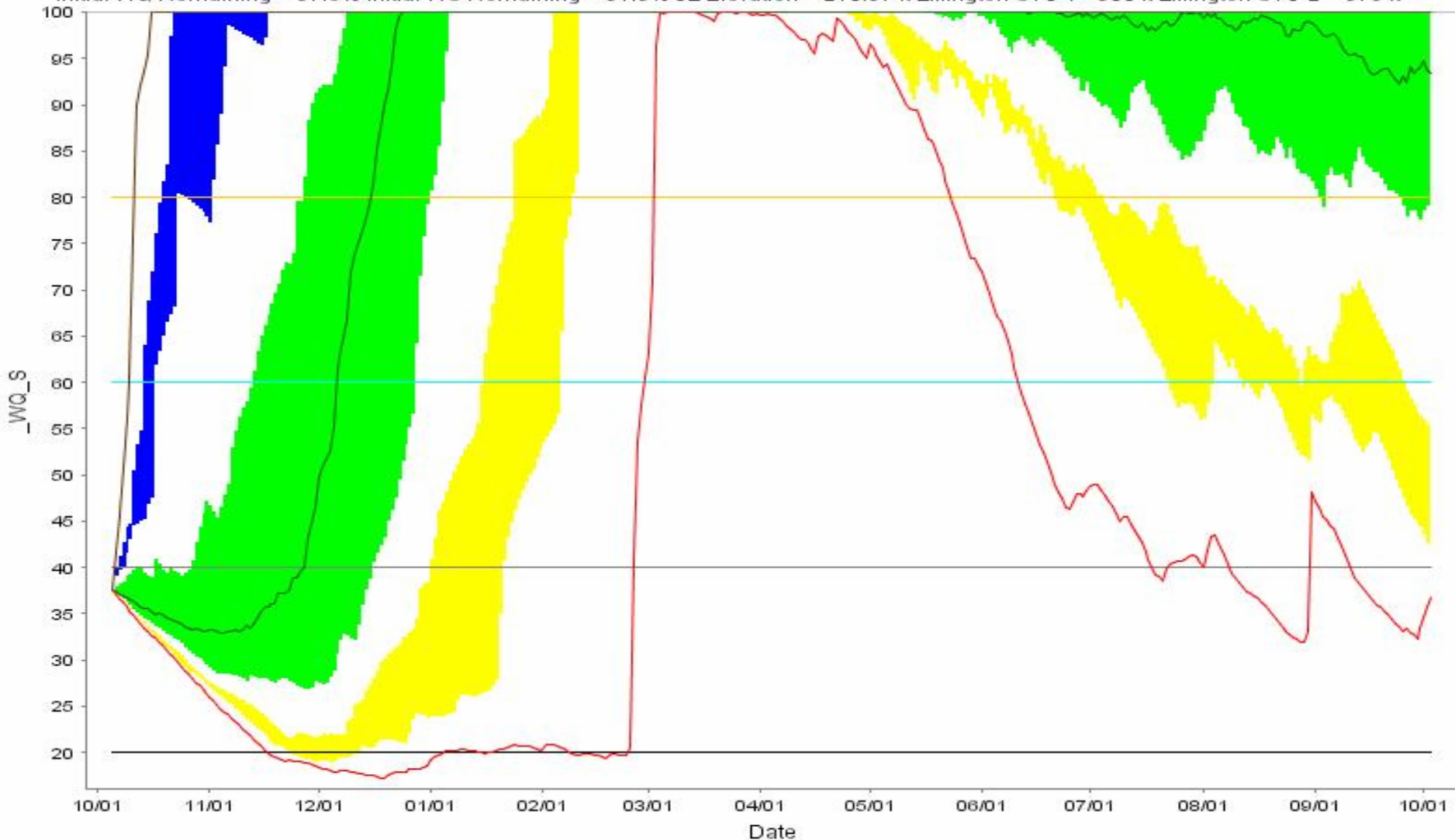
Initial WQ Remaining = 37.6% Initial WS Remaining = 91.3% JL Elev = 210.97 ft Lillington STG 1 500 ft Lillington STG 2 = 375 ft



- Min — Median — Max — 211 feet — Actual Jordan Elevation
- YELLOW (LOWER) BAND = 5- TO 10-PERCENTILE
- GREEN (MIDDLE) BAND = 25- TO 75-PERCENTILE
- BLUE (UPPER) BAND = 90- TO 95-PERCENTILE

Percent Remaining In The Water Quality Pool

Initial WQ Remaining = 37.6% Initial WS Remaining = 91.3% JL Elevation = 210.97 ft Lillington STG 1= 500 ft Lillington STG 2 = 375 ft



- Min — Median — Max — 20 — 40 — 60 — 80
- ▲ YELLOW (LOWER) BAND = 5- TO 10-PERCENTILE
- GREEN (MIDDLE) BAND = 25- TO 75-PERCENTILE
- ▲ BLUE (UPPER) BAND = 90- TO 95-PERCENTILE

Date	Probability (%) of Being at or Below			
	JL Elev 211 ft	60%	40%	20%
15-Oct	64.9	92.5	76.6	<1.0
1-Nov	62.3	84.2	72.7	<1.0
15-Nov	48.1	71.4	57.1	1.3
1-Dec	36.4	55.8	44.2	7.8
15-Dec	22.1	36.8	27.3	2.6
1-Jan	9.1	21.2	10.4	2.6
15-Jan	6.5	10.4	7.8	1.3