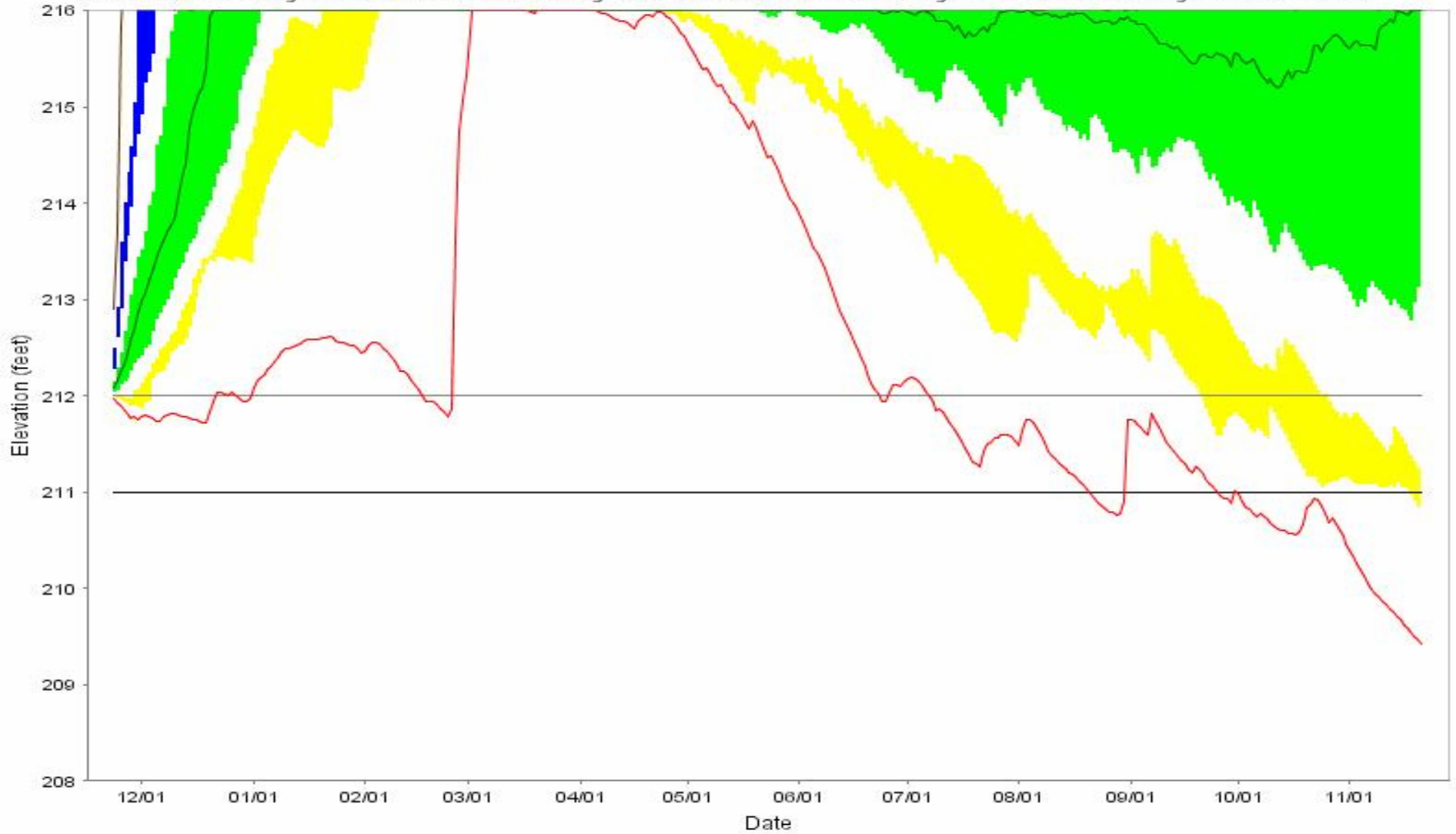


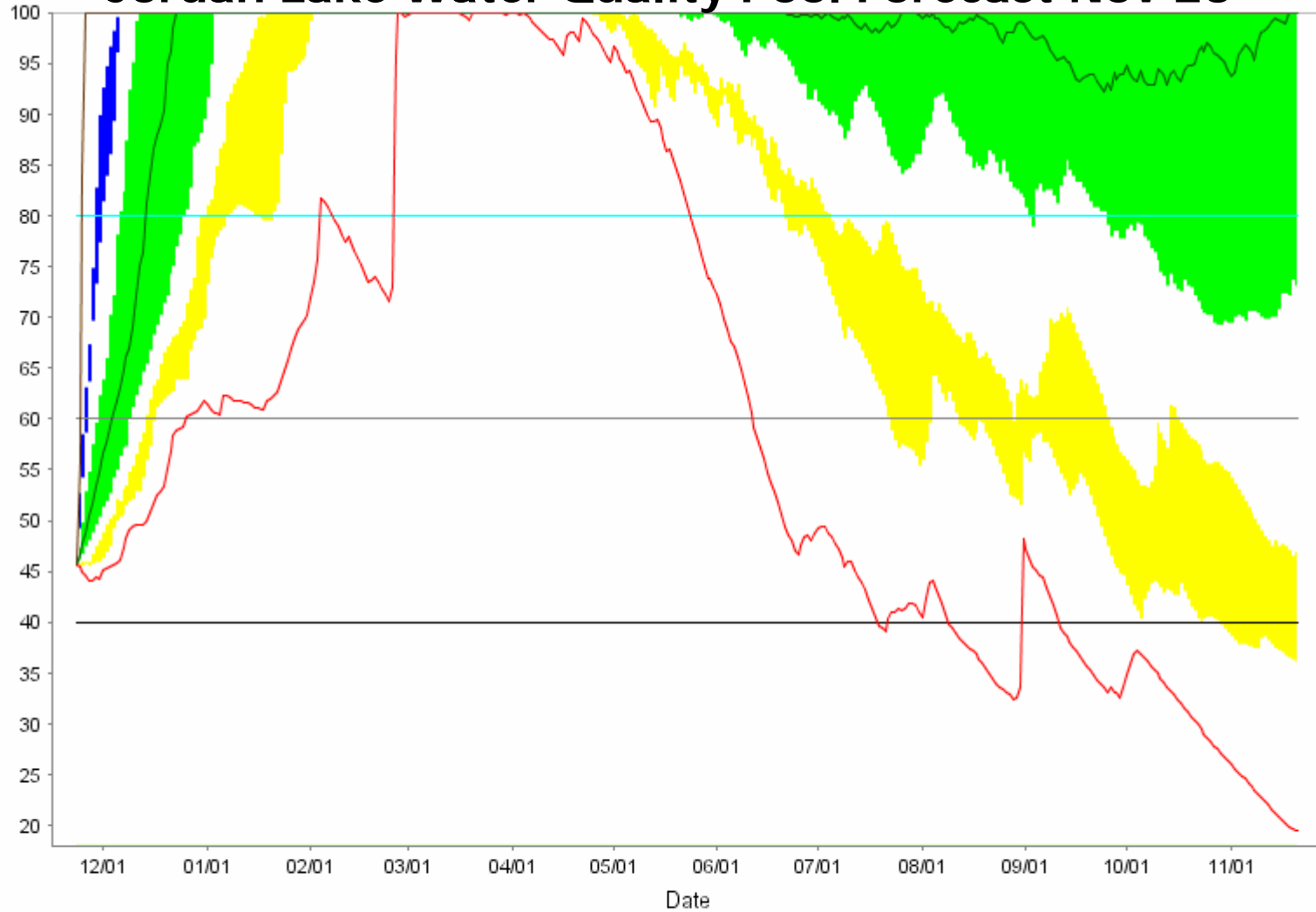
### Jordan Lake Elevation Forecast

Initial WQ Remaining = 45.9% Initial WS Remaining = 99.8% JL Elev = 212.01 ft Lillington STG 1 = 500ft Lillington STG 2 = 375 ft



- Min — Median — Max — 211 feet — 212.01 feet
- YELLOW (LOWER) BAND = 5- TO 10-PERCENTILE
- GREEN (MIDDLE) BAND = 25- TO 75-PERCENTILE
- BLUE (UPPER) BAND = 90- TO 95-PERCENTILE

## Jordan Lake Water Quality Pool Forecast Nov 23

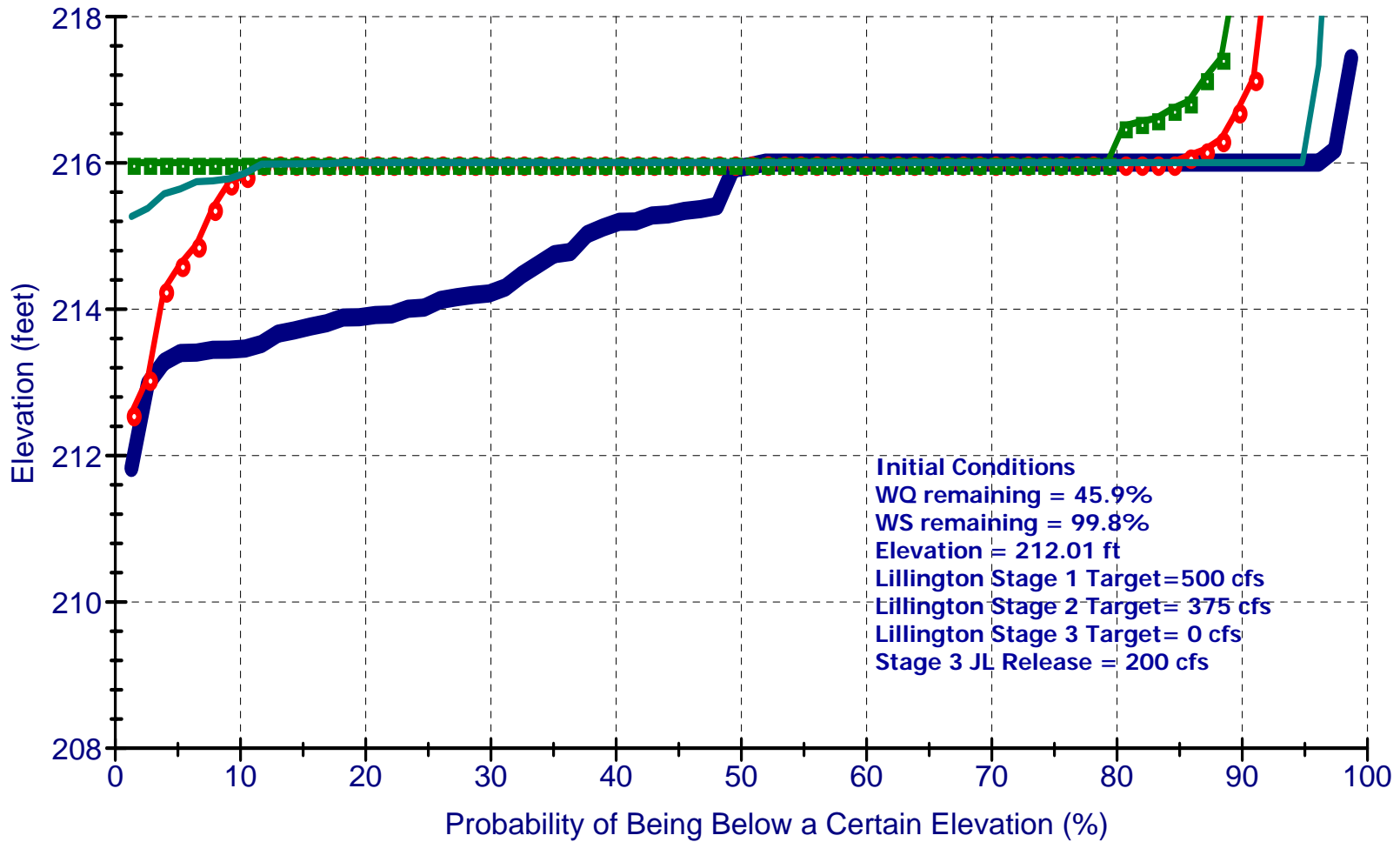


- Min — Median — Max — 40 feet — 60 feet — 80 feet
- YELLOW (LOWER) BAND = 5- TO 10-PERCENTILE
- GREEN (MIDDLE) BAND = 25- TO 75-PERCENTILE
- BLUE (UPPER) BAND = 90- TO 95-PERCENTILE

Date	Probability (%) of Being at or Below			
	JL Elev 211 ft	60% WQ Pool	40% WQ Pool	20% WQ Pool
1-Dec	<1.3	59.7	<1.3	<1.3
15-Dec	<1.3	7.8	<1.3	<1.3
1-Jan	<1.3	<1.3	<1.3	<1.3
15-Jan	<1.3	<1.3	<1.3	<1.3
1-Feb	<1.3	<1.3	<1.3	<1.3

## Jordan Lake Elevation in 4, 8, 16, and 24 Weeks

11\_23\_2007\_cond\_DP\_Init\_WS



4 weeks

8 weeks

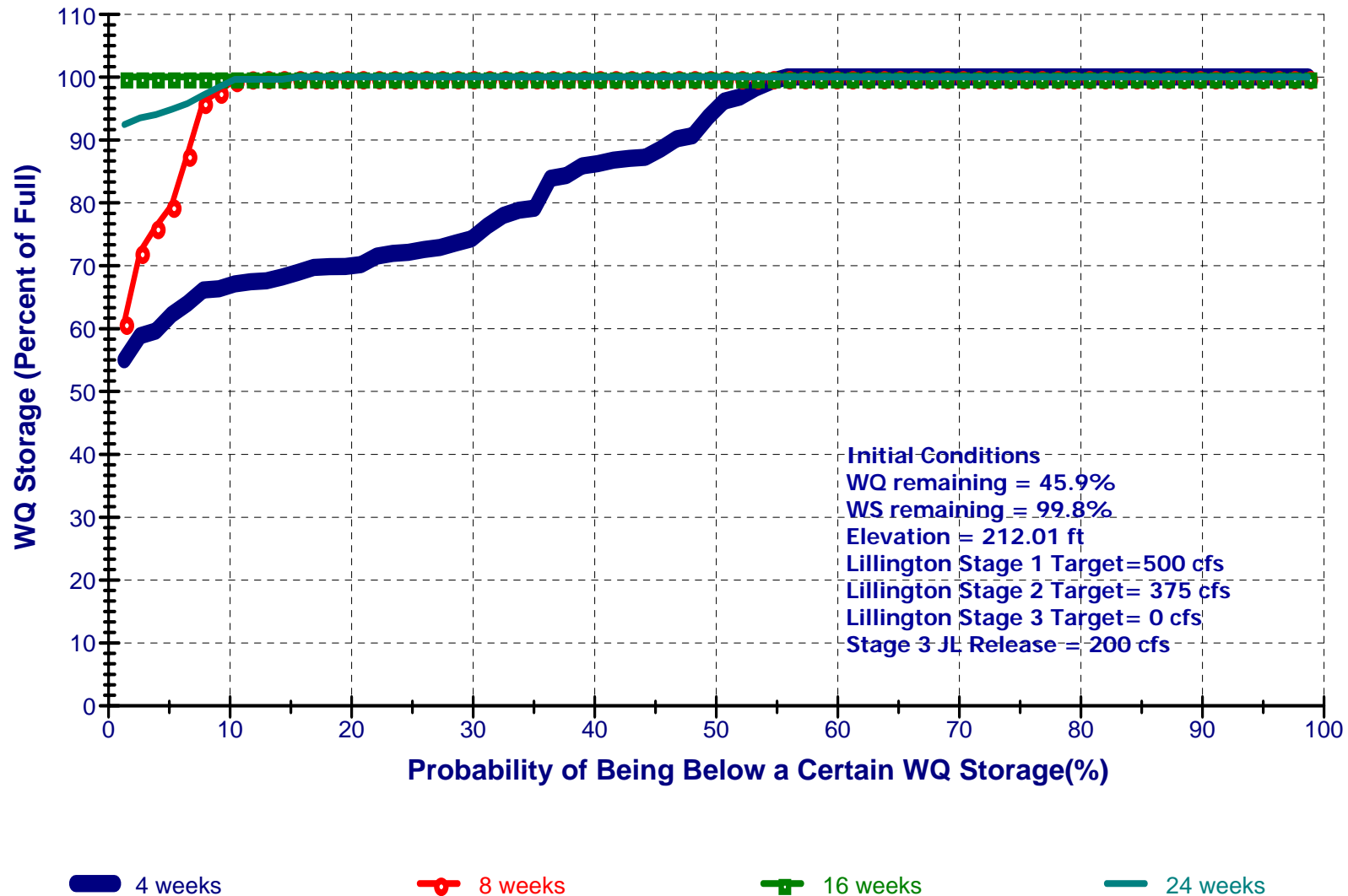
16 weeks

24 weeks

# Jordan Lake Model – 11-23-2007 Forecast

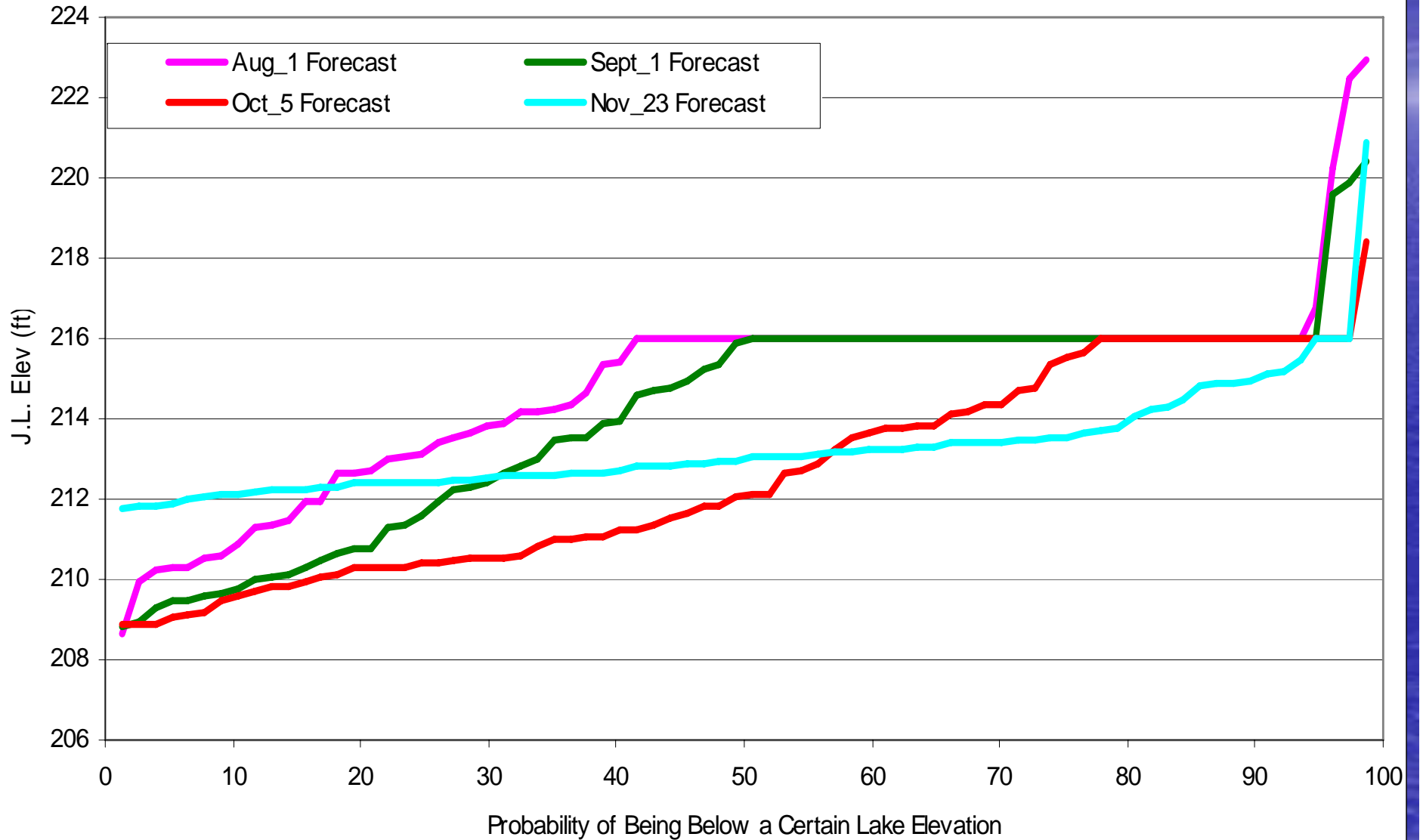
## Jordan Lake WQ Storage in 4, 8, 16, and 24 Weeks

11\_23\_2007\_cond\_DP\_Init\_WS

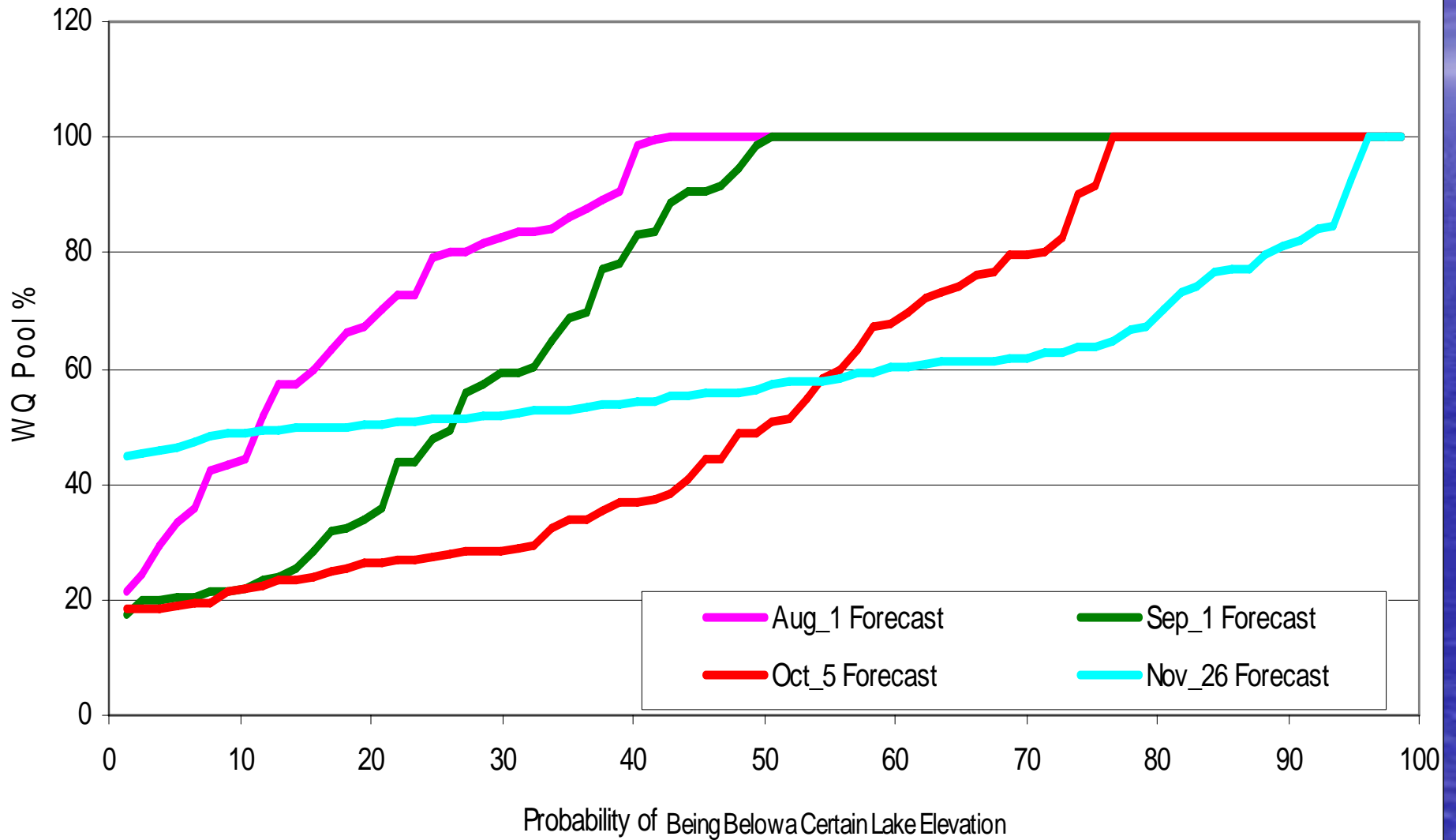


Jordan Lake Model – 11-23-2007 Forecast

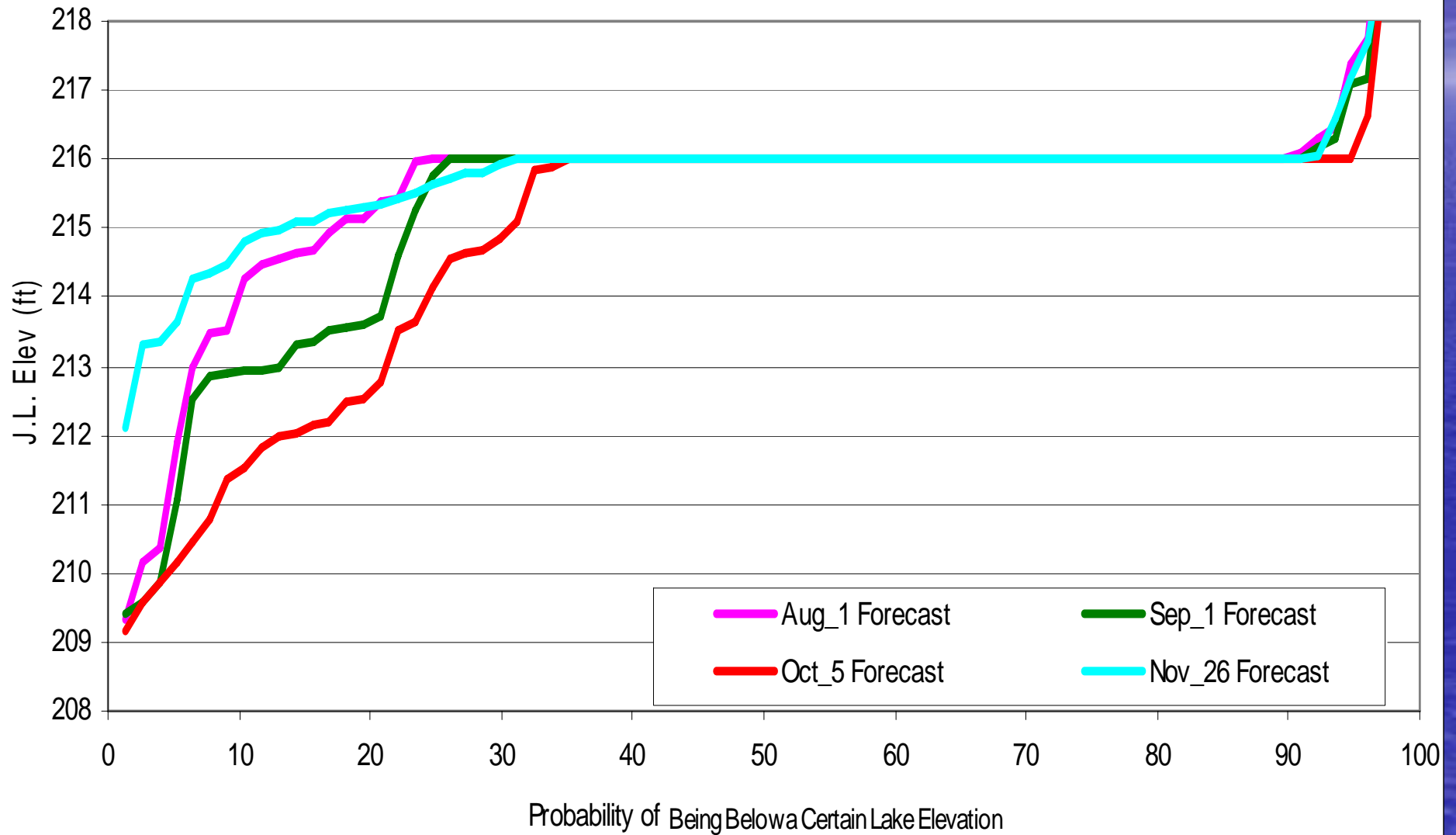
# OASIS Jordan Lake Elevation December 1 Forecast



## OASIS Jordan Lake WQ Pool December 1 Forecast



## OASIS Jordan Lake Elevation Jan 1 2008 Forecast





## OASIS Jordan Lake WQ Pool Jan 1 2008 Forecast

