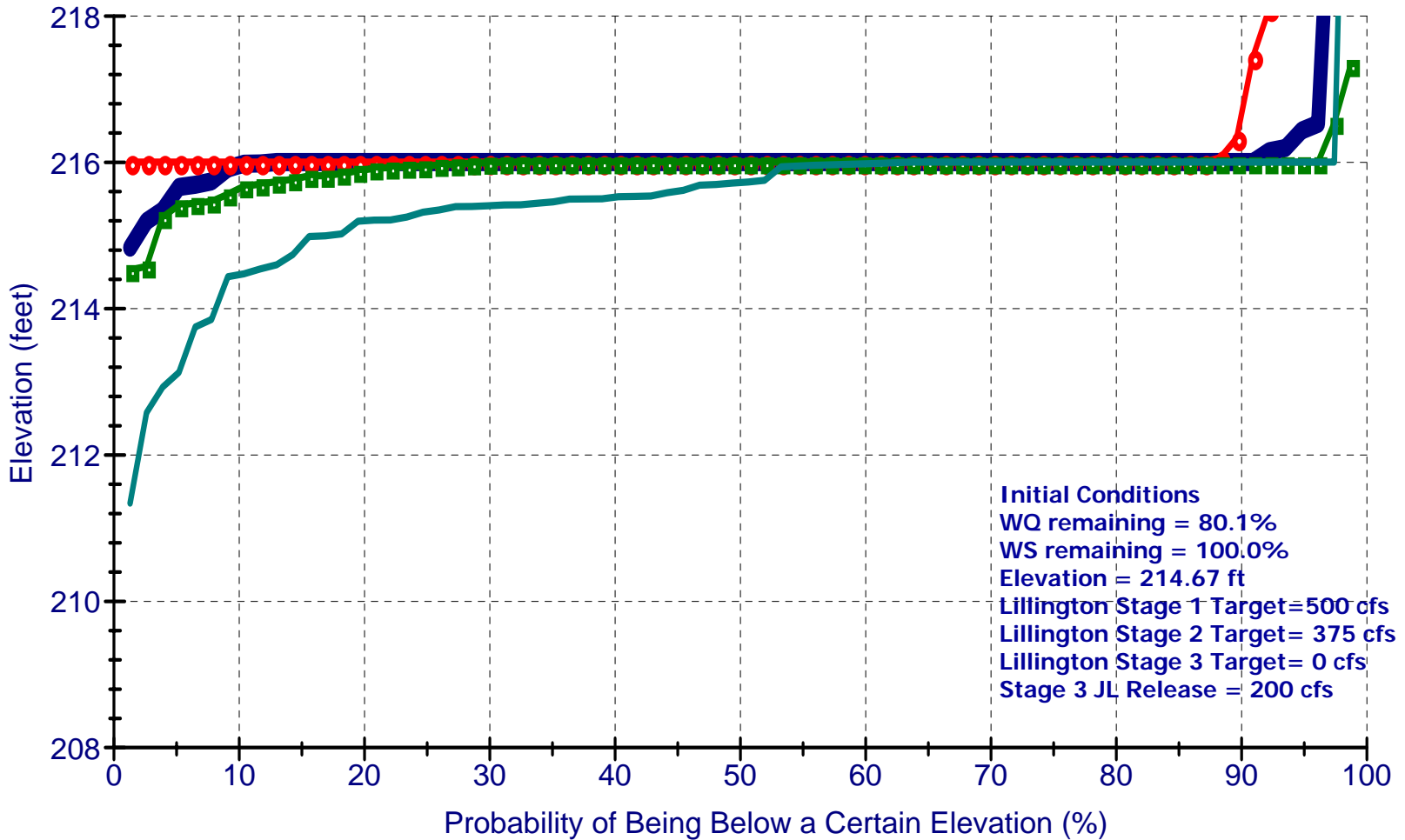


Jordan Lake Elevation in 4, 8, 16, and 24 Weeks

02_04_2008_cond_init_WS



4 weeks

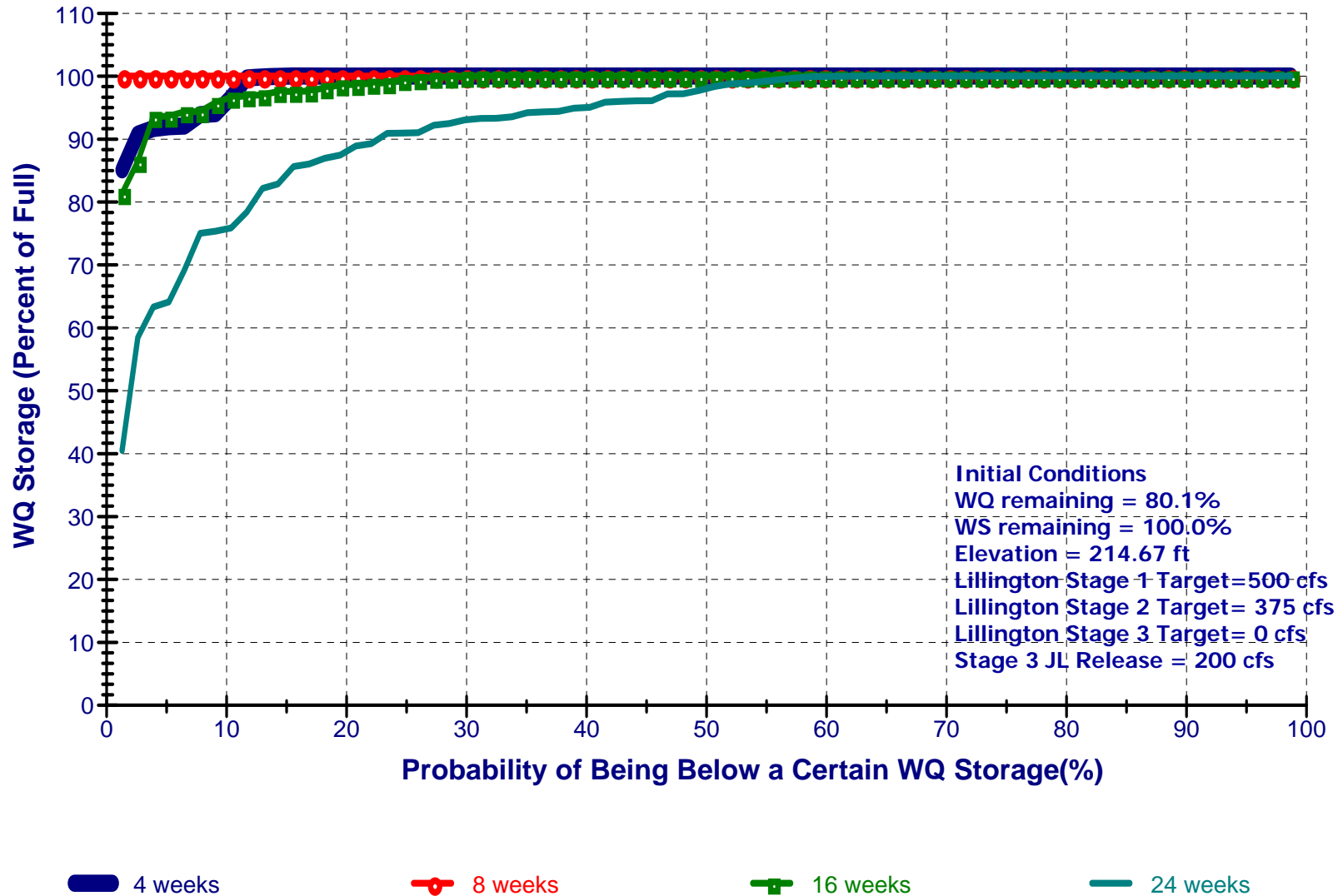
8 weeks

16 weeks

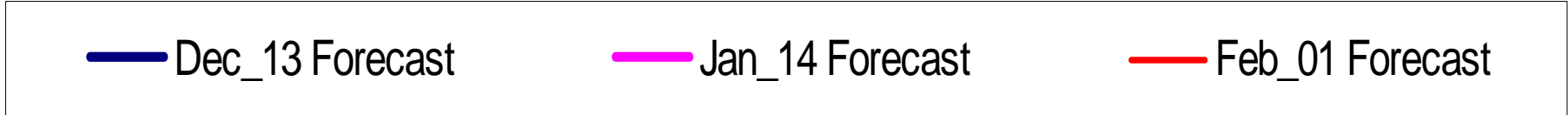
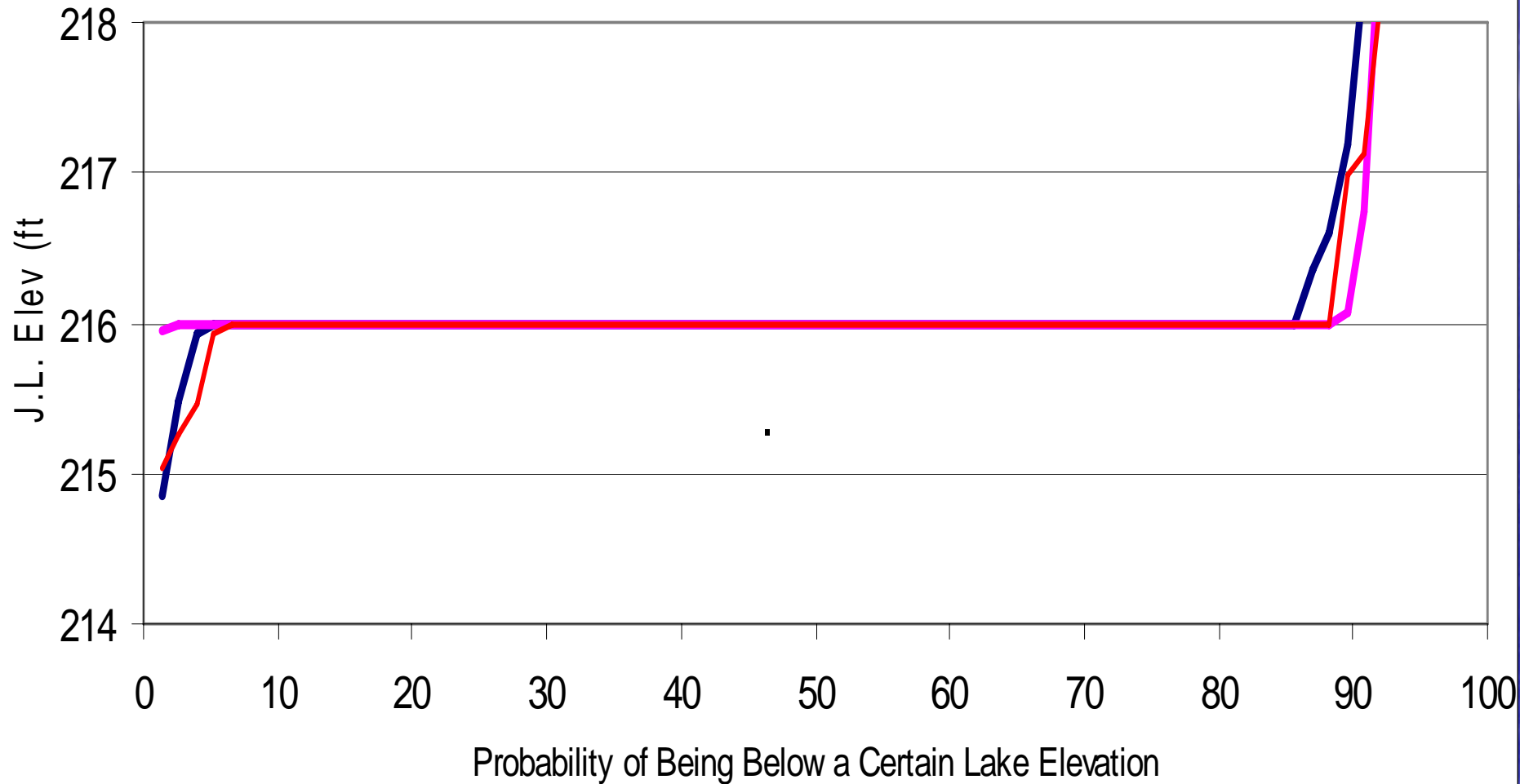
24 weeks

Jordan Lake WQ Storage in 4, 8, 16, and 24 Weeks

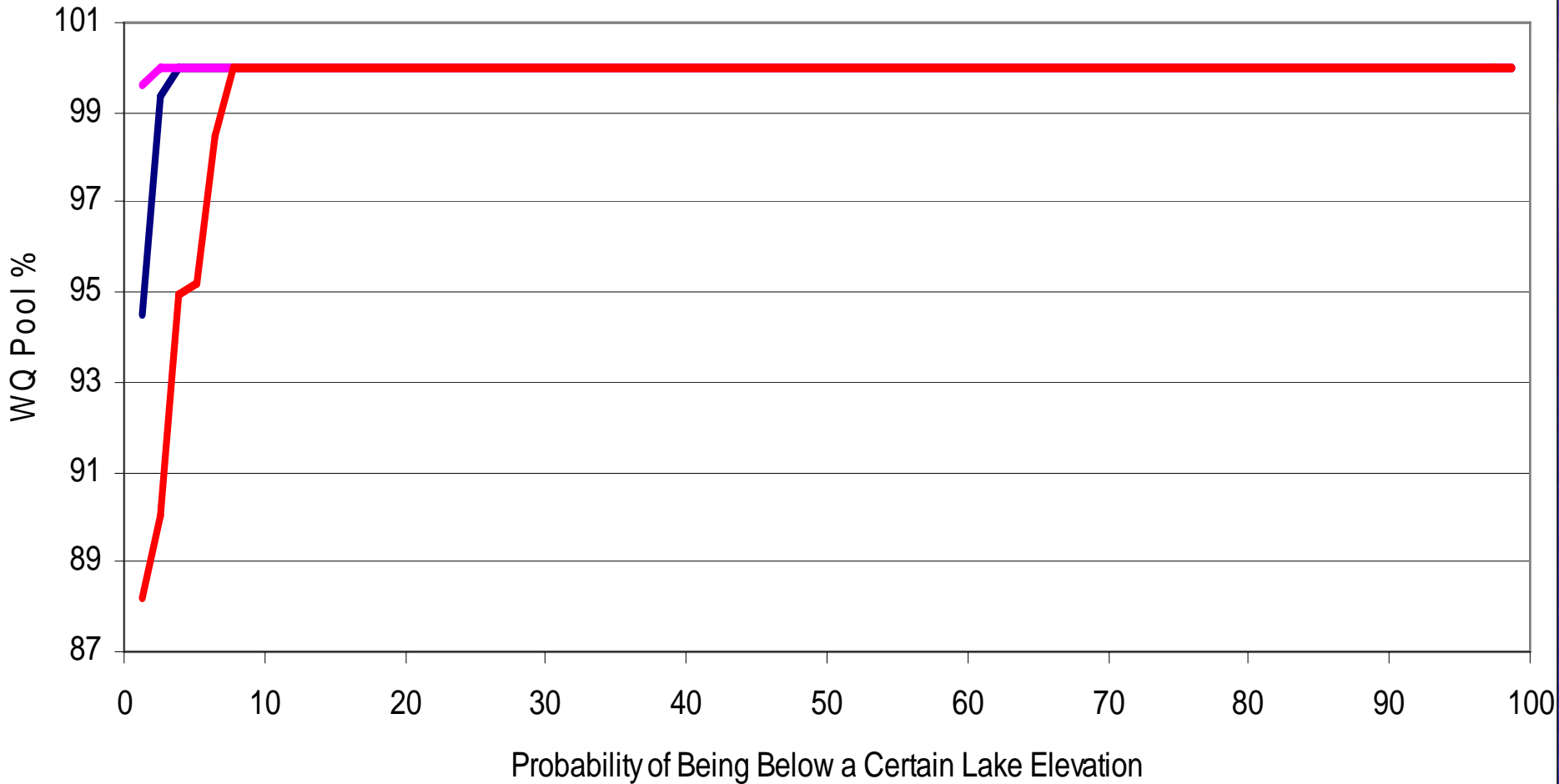
02_04_2008_cond_init_WS



OASIS JORDAN LAKE ELEVATION MAR 1 2008 FORECAST



OASIS JORDAN LAKE WQ POOL MAR 1 FORECAST



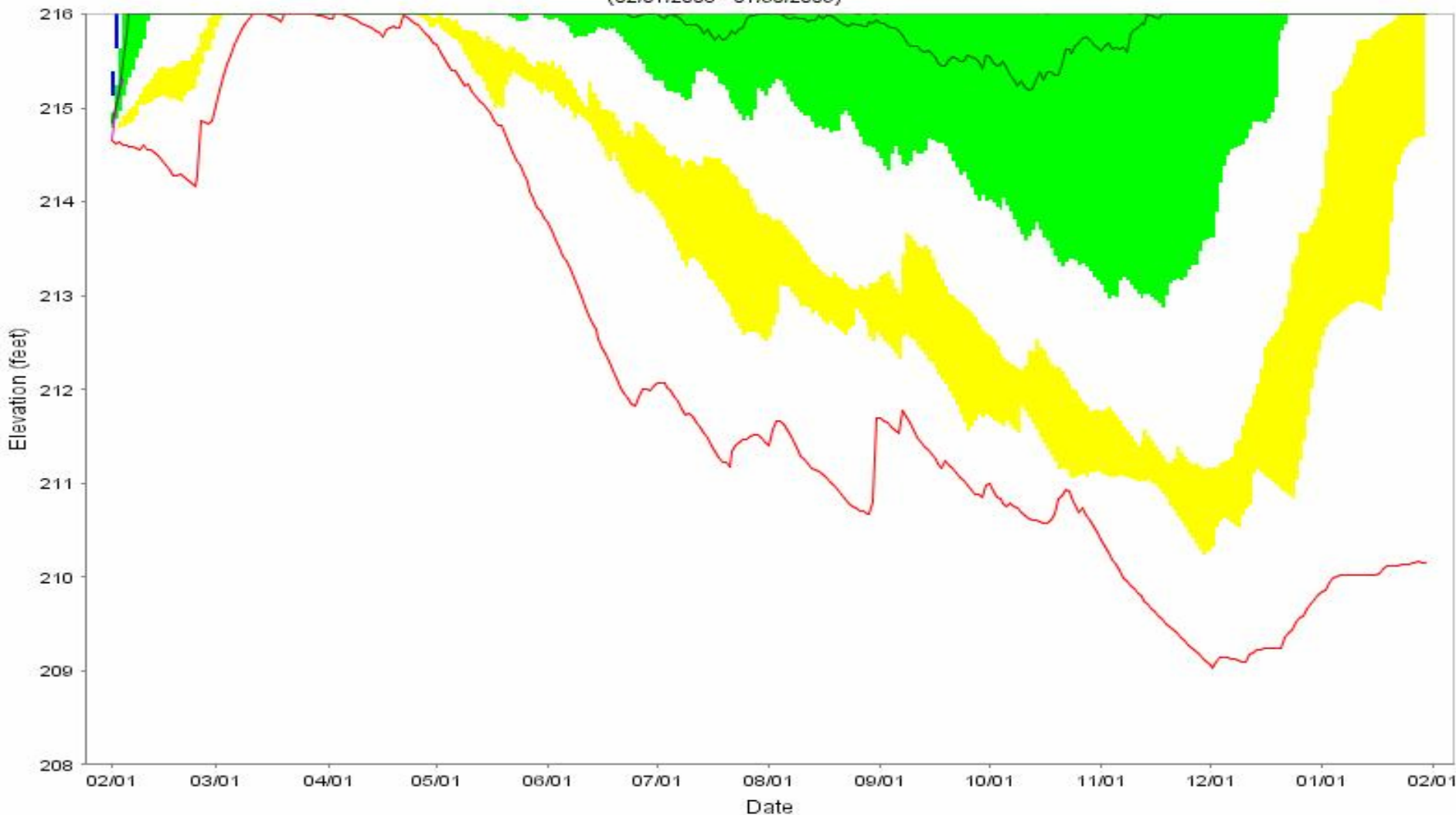
Dec_13 Forecast

Jan_14 Forecast

Feb_01 Forecast

Jordan Lake Elevation Forecast

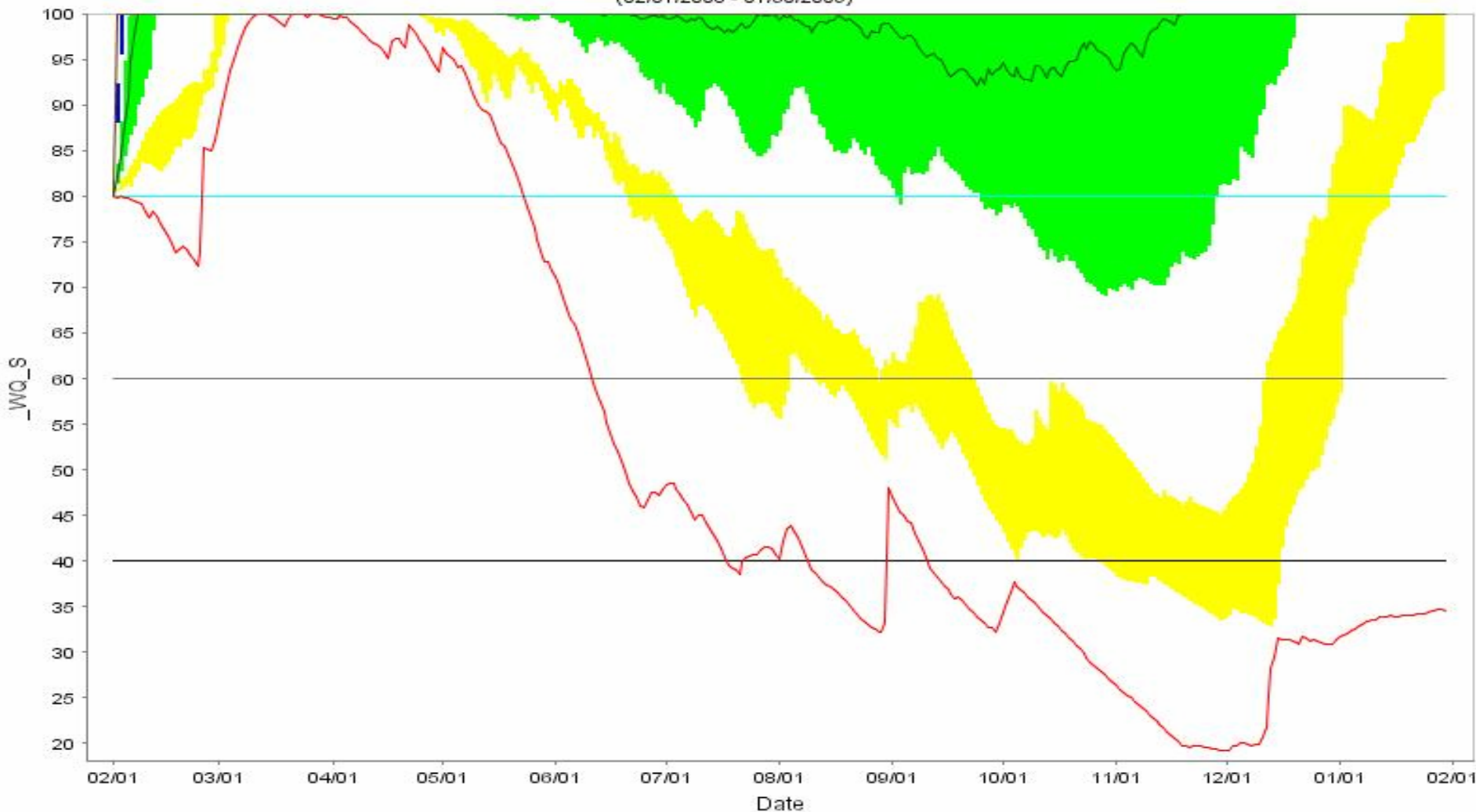
Initial WQ Remaining = 80.1% Initial WS Remaining = 100% JL Elev = 21.67ft Lillington STG 1= 500ft Lillington STG 2= 375ft
(02/01/2008 - 01/30/2009)



- Min — Median — Max — Actual Jordan Elevation
- YELLOW (LOWER) BAND = 5- TO 10-PERCENTILE
- GREEN (MIDDLE) BAND = 25- TO 75-PERCENTILE
- BLUE (UPPER) BAND = 90- TO 95-PERCENTILE

Percent remaining in the water quality pool

Initial WQ Remaining = 80.1% Initial WS Remaining = 100.0% JL Elev = 214.67ft Lillington STG 1= 500ft Lillington STG 2 = 375ft
(02/01/2008 - 01/30/2009)



- Min — Median — Max — 40 — 60 — 80
- YELLOW (LOWER) BAND = 5- TO 10-PERCENTILE
- GREEN (MIDDLE) BAND = 25- TO 75-PERCENTILE
- BLUE (UPPER) BAND = 90- TO 95-PERCENTILE