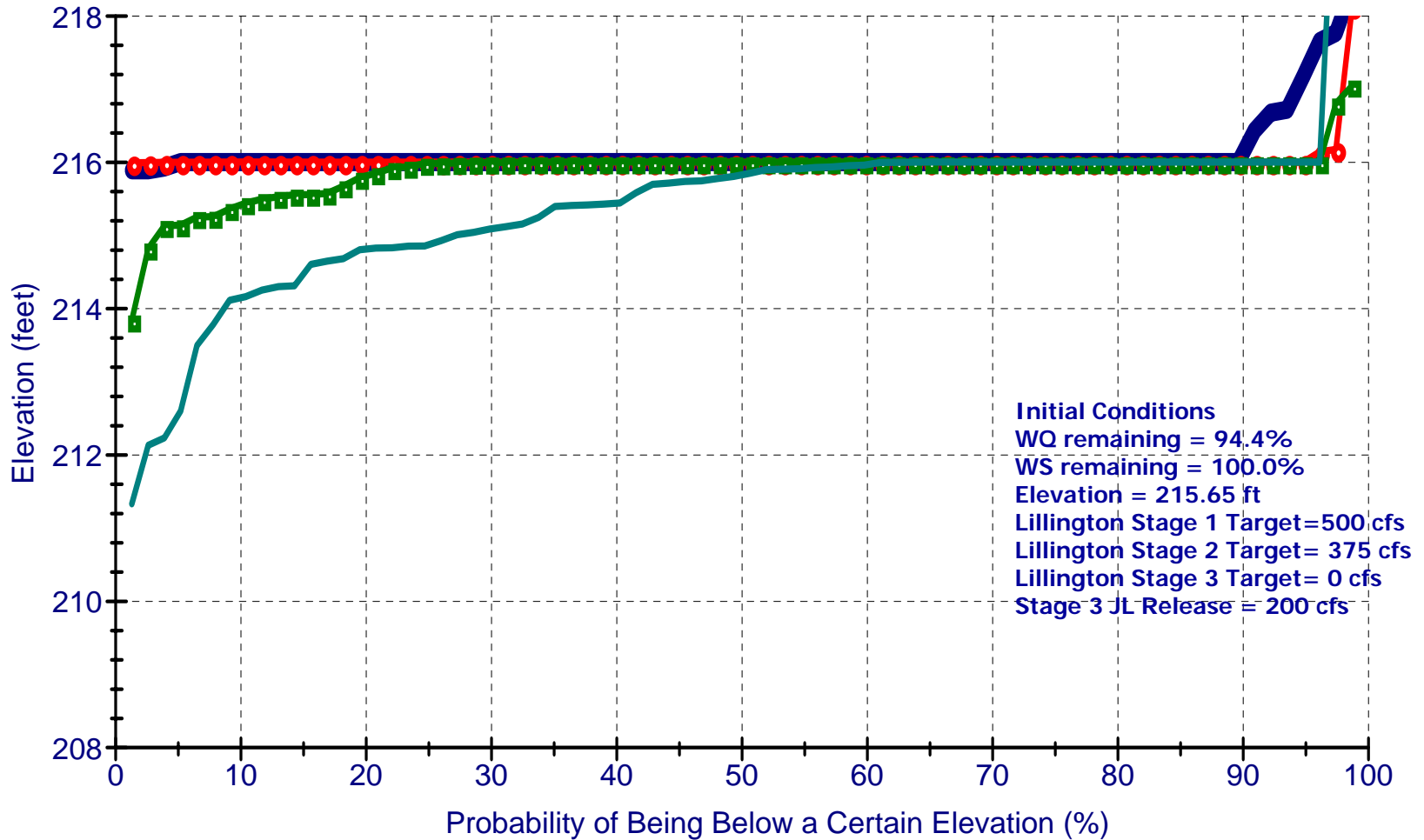


Jordan Lake Elevation in 4, 8, 16, and 24 Weeks

02_11_2008_cond_init_WS



4 weeks

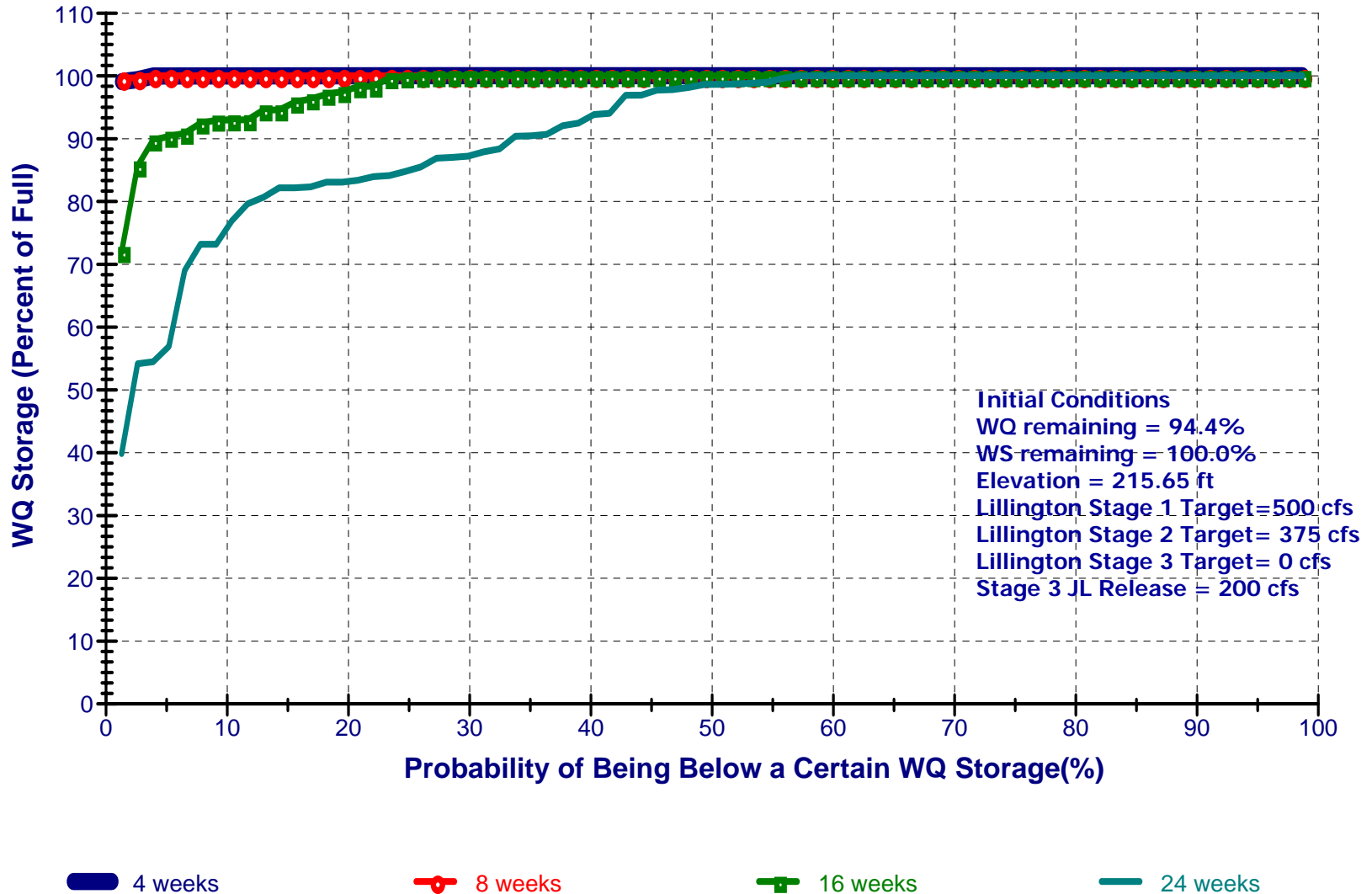
8 weeks

16 weeks

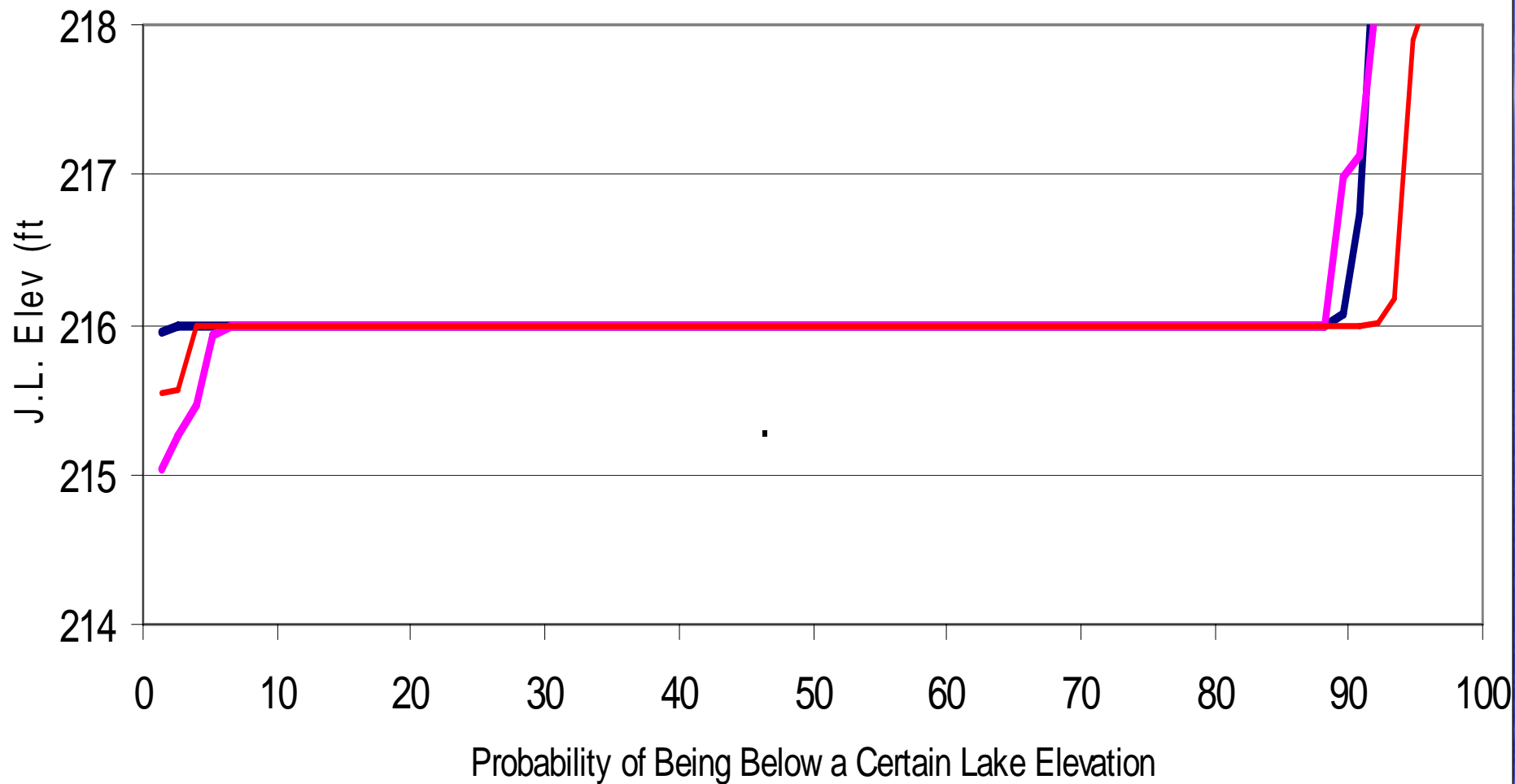
24 weeks

Jordan Lake WQ Storage in 4, 8, 16, and 24 Weeks

02_11_2008_cond_init_WS



OASIS JORDAN LAKE ELEVATION MAR 1 2008 FORECAST

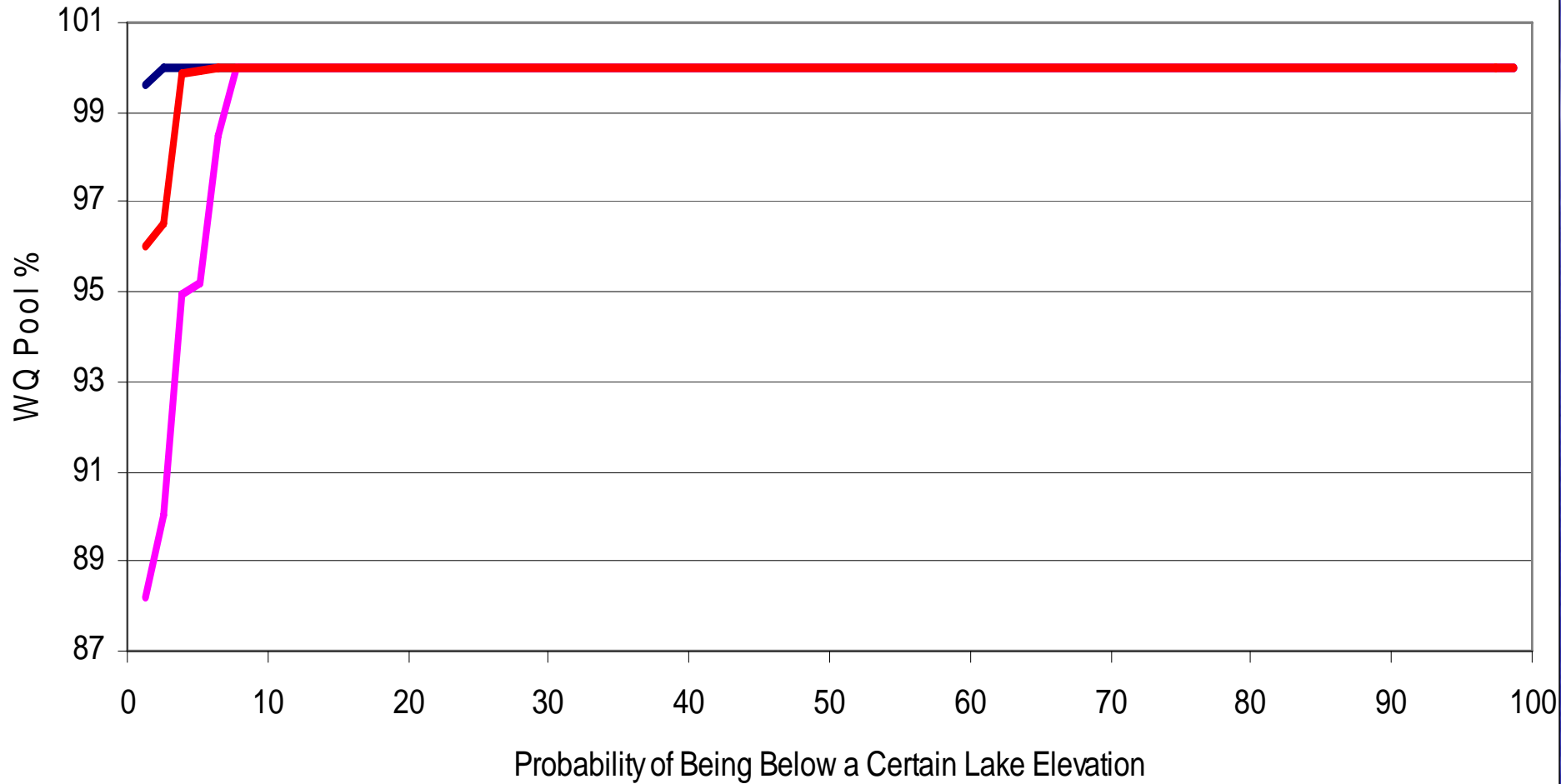


Jan_14 Forecast

Feb_01 Forecast

Feb_08 Forecast

OASIS JORDAN LAKE WQ POOL MAR 1 FORECAST



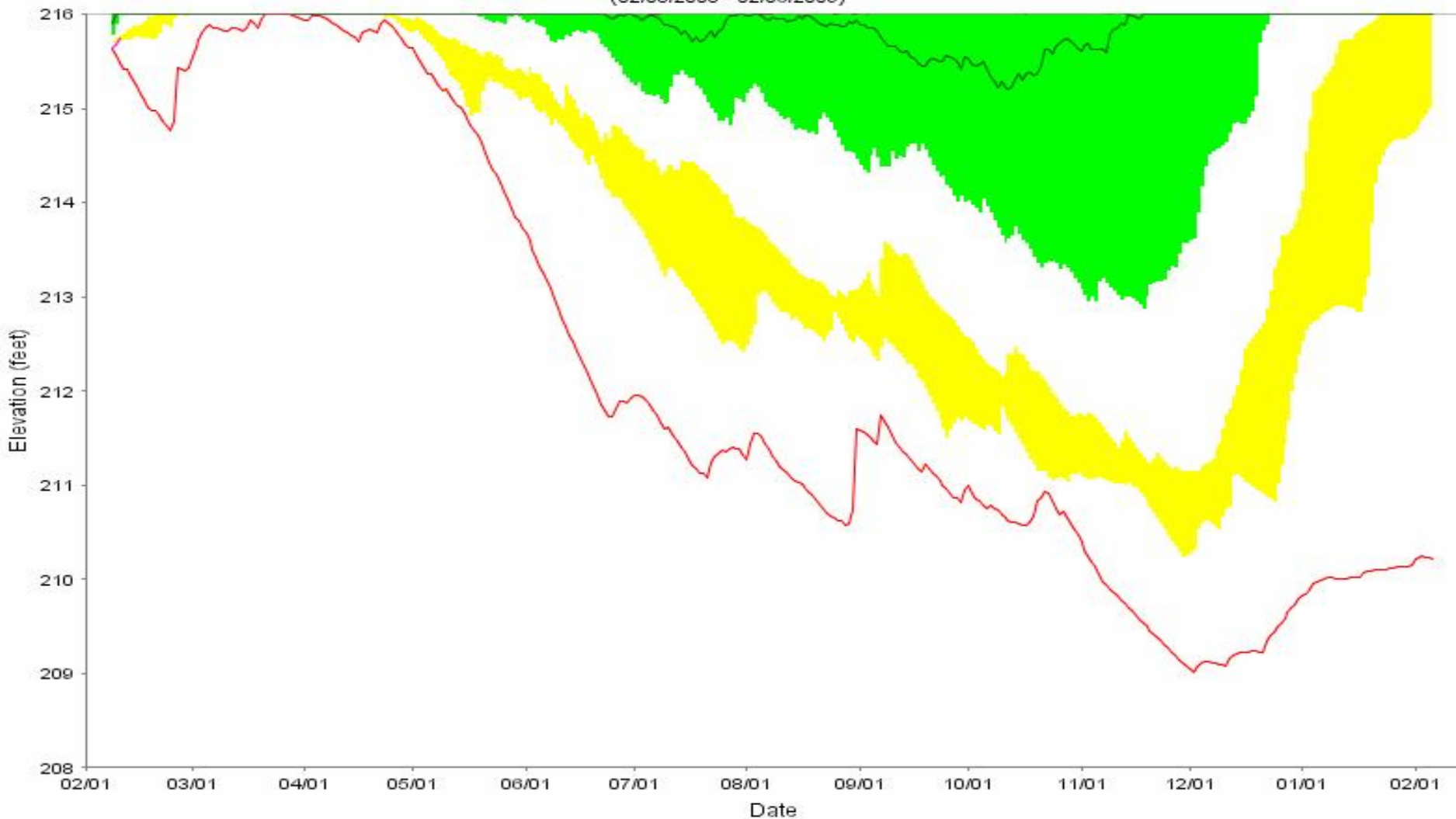
Jan_14 Forecast

Feb_01 Forecast

Feb_08 Forecast

Jordan Lake Elevation Forecast

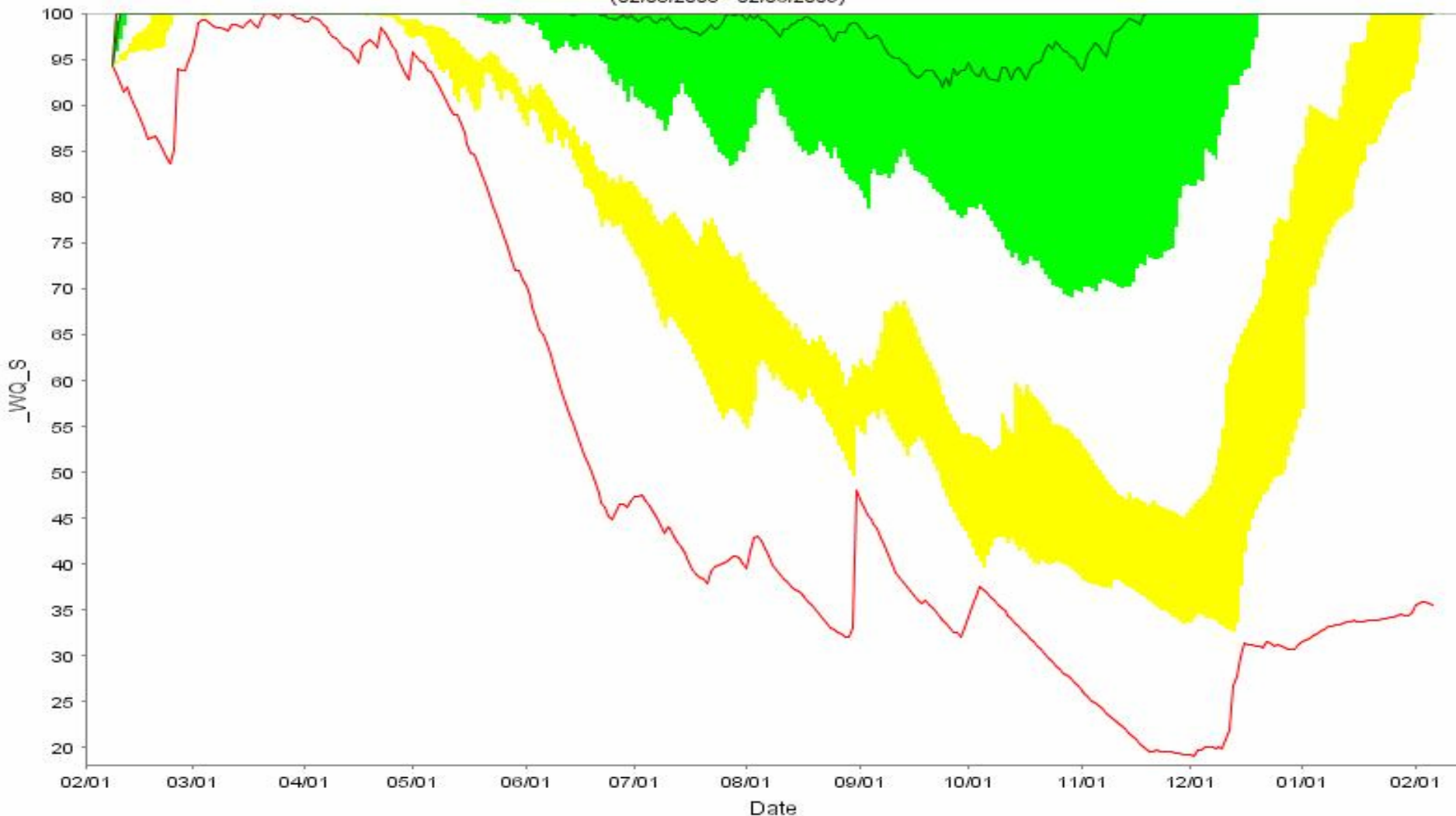
Initial WQ Remaining = 94.4% Initial WS Remaining = 100.0% JL Elev = 215.65ft Lillington STG 1 = 500ft Lillington STG 2 = 375ft
(02/08/2008 - 02/06/2009)



- Min — Median — Max — Actual Jordan Elevation
- YELLOW (LOWER) BAND = 5- TO 10-PERCENTILE
- GREEN (MIDDLE) BAND = 25- TO 75-PERCENTILE
- BLUE (UPPER) BAND = 90- TO 95-PERCENTILE

Percent remaining in the water quality pool

Initial WQ Remaining = 94.4% Initial WS Remaining = 100.0% JL Elev = 215.65ft Lillington STG 1 = 500ft Lillington STG 2 = 375ft.
(02/08/2008 - 02/06/2009)



- Min — Median — Max
- YELLOW (LOWER) BAND = 5- TO 10-PERCENTILE
- GREEN (MIDDLE) BAND = 25- TO 75-PERCENTILE
- BLUE (UPPER) BAND = 90- TO 95-PERCENTILE