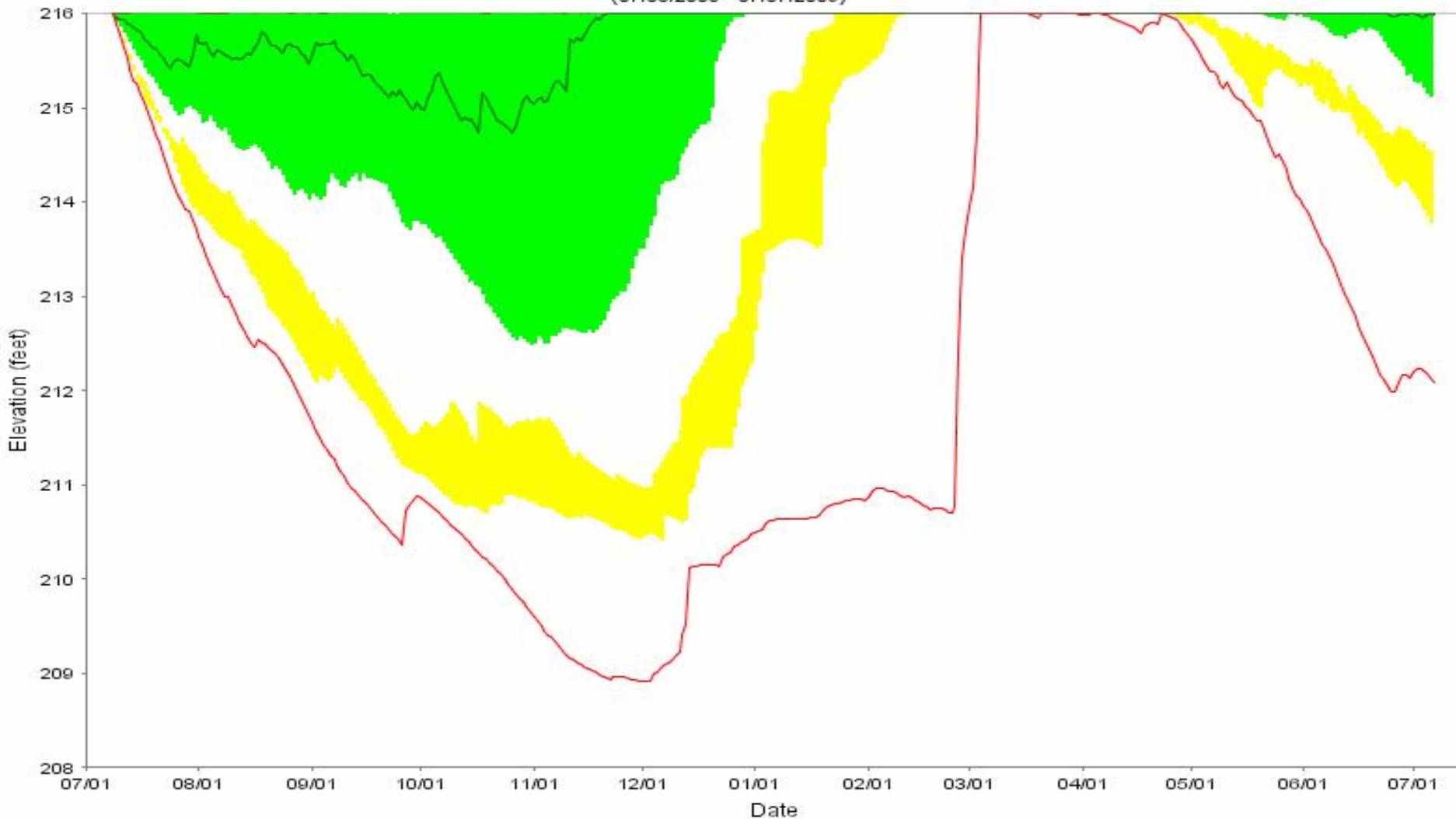


## Jordan Lake Elevation Forecast

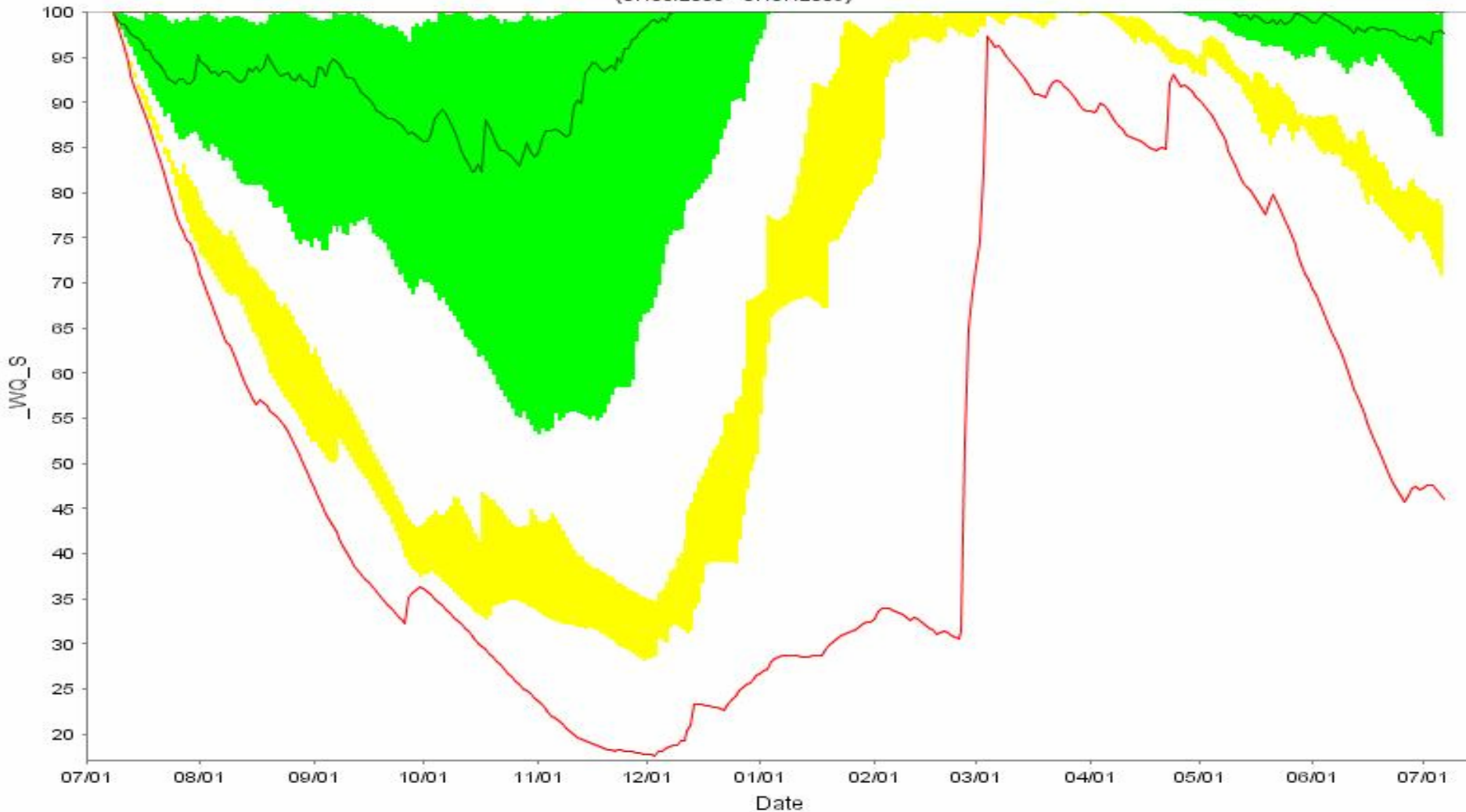
Initial WQ Remaining = 100% Initial WS Remaining = 100% JL Elev = 216.48ft Lillington STG 1 = 500ft Lillington STG 2 = 375ft  
(07/08/2008 - 07/07/2009)



- Min — Median — Max — Actual Jordan Elevation
- YELLOW (LOWER) BAND = 5- TO 10-PERCENTILE
- GREEN (MIDDLE) BAND = 25- TO 75-PERCENTILE
- BLUE (UPPER) BAND = 90- TO 95-PERCENTILE

## Percent remaining in the water quality pool

Initial WQ Remaining = 100% Initial WS Remaining = 100% JL Elev = 216.48ft Lillington STG 1 = 500ft Lillington STG 2 = 375ft.  
(07/08/2008 - 07/07/2009)



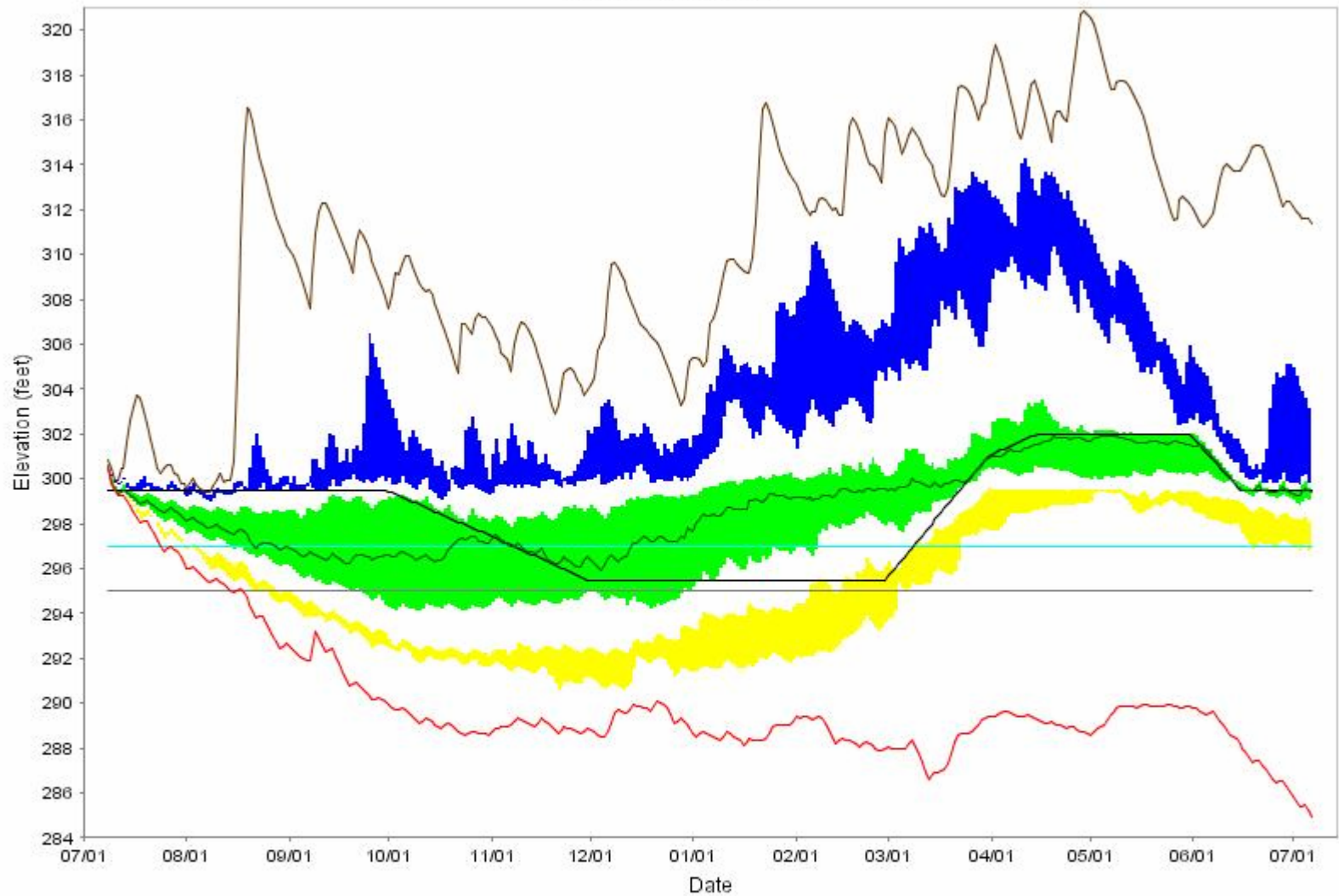
- Min — Median — Max
- YELLOW (LOWER) BAND = 5- TO 10-PERCENTILE
- GREEN (MIDDLE) BAND = 25- TO 75-PERCENTILE
- BLUE (UPPER) BAND = 90- TO 95-PERCENTILE

# Jordan Lake

	Probability (%) of Being Below					
		Water Quality Pool				
	JL Elev 211 ft	100%	80%	60%	40%	20%
1-Aug	<1.3	80.8	10.3	<1.3	<1.3	<1.3
15-Aug	<1.3	83.3	24.4	1.3	<1.3	<1.3
1-Sep	<1.3	79.5	29.5	7.7	<1.3	<1.3
15-Sep	7.7	80.8	30.8	12.8	2.6	<1.3
1-Oct	11.5	80.8	41.0	15.4	2.6	<1.3
15-Oct	12.8	79.5	44.9	19.2	7.7	<1.3

# Kerr Lake Elevation Forecast

(07/08/2008 - 07/07/2009)



- Min — Median — Max — Guide Curve — 295 feet
- 297 feet
- YELLOW (LOWER) BAND = 5- TO 10-PERCENTILE
- GREEN (MIDDLE) BAND = 25- TO 75-PERCENTILE
- BLUE (UPPER) BAND = 90- TO 95-PERCENTILE

# John H Kerr Lake

	JHK Probability of Being Below	
	Elevation 295ft	Elevation 297ft
1-Aug	<1.3	5.1
15-Aug	<1.3	27.8
1-Sep	7.6	49.4
15-Sep	15.2	51.9
1-Oct	30.4	53.2
15-Oct	35.4	54.4