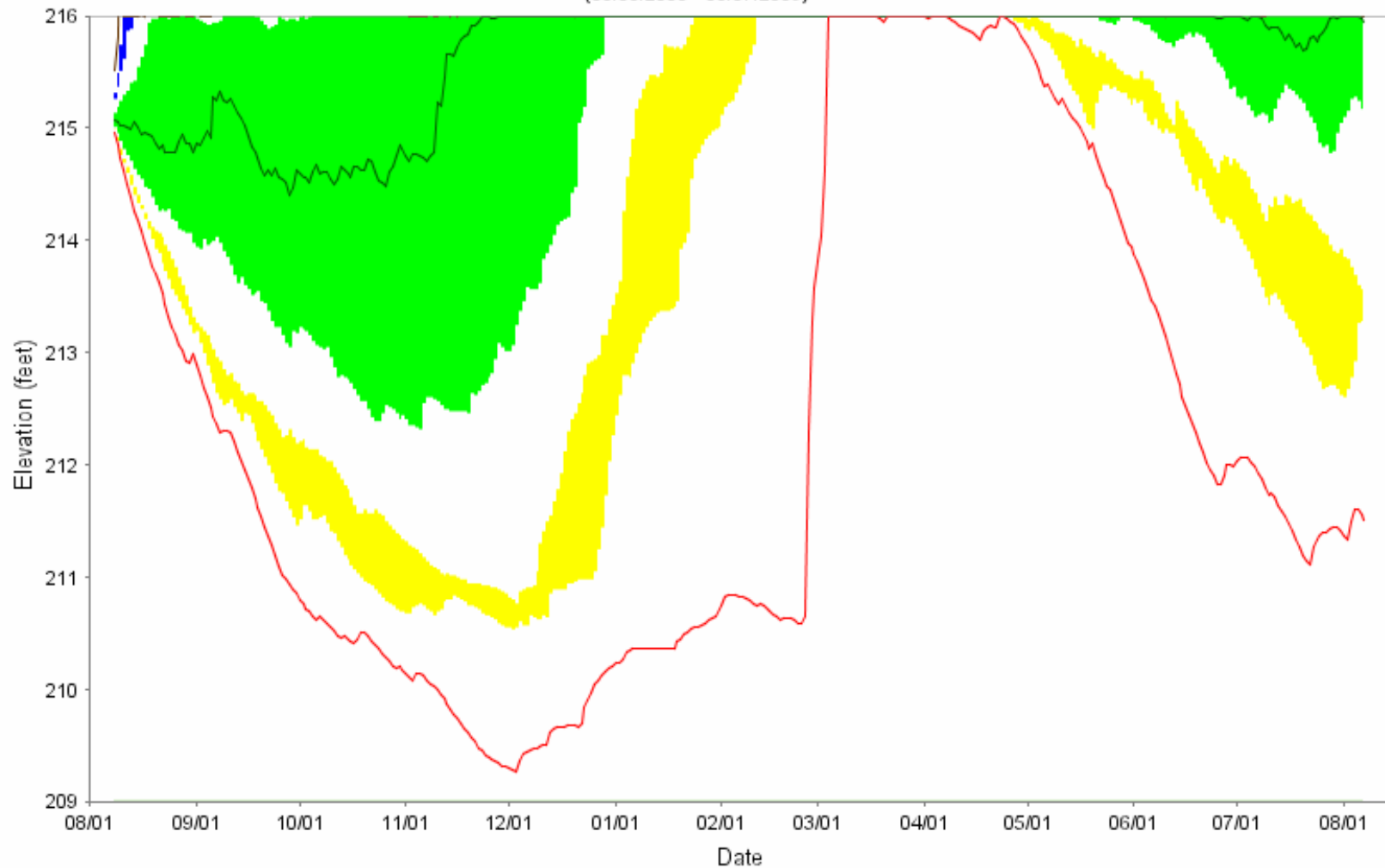


Jordan Lake Elevation Forecast

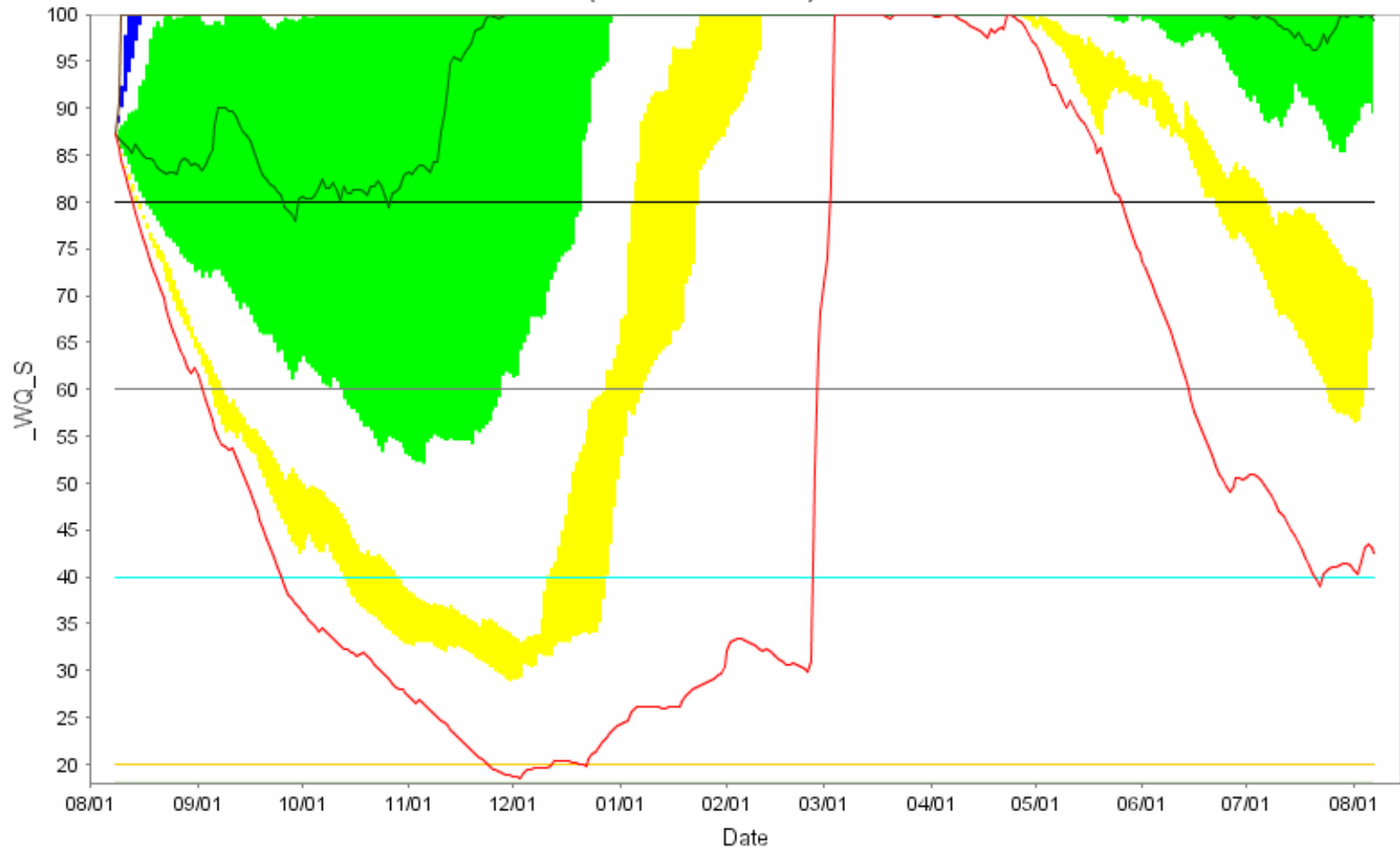
August 8, 2008 Initial Elev = 215.08 Level 1 Lillington Target = 500 cfs Level 2 Lillington Target = 375 cfs
(08/08/2008 - 08/07/2009)



- Min — Median — Max
- YELLOW (LOWER) BAND = 5- TO 10-PERCENTILE
- GREEN (MIDDLE) BAND = 25- TO 75-PERCENTILE
- BLUE (UPPER) BAND = 90- TO 95-PERCENTILE

Percent Remaining in the Water Quality Pool

August 8, 2008 Initial WQ = 87.1% Level 1 Lillington Target = 500 cfs Level 2 Lillington Target = 375 cfs
(08/08/2008 - 08/07/2009)

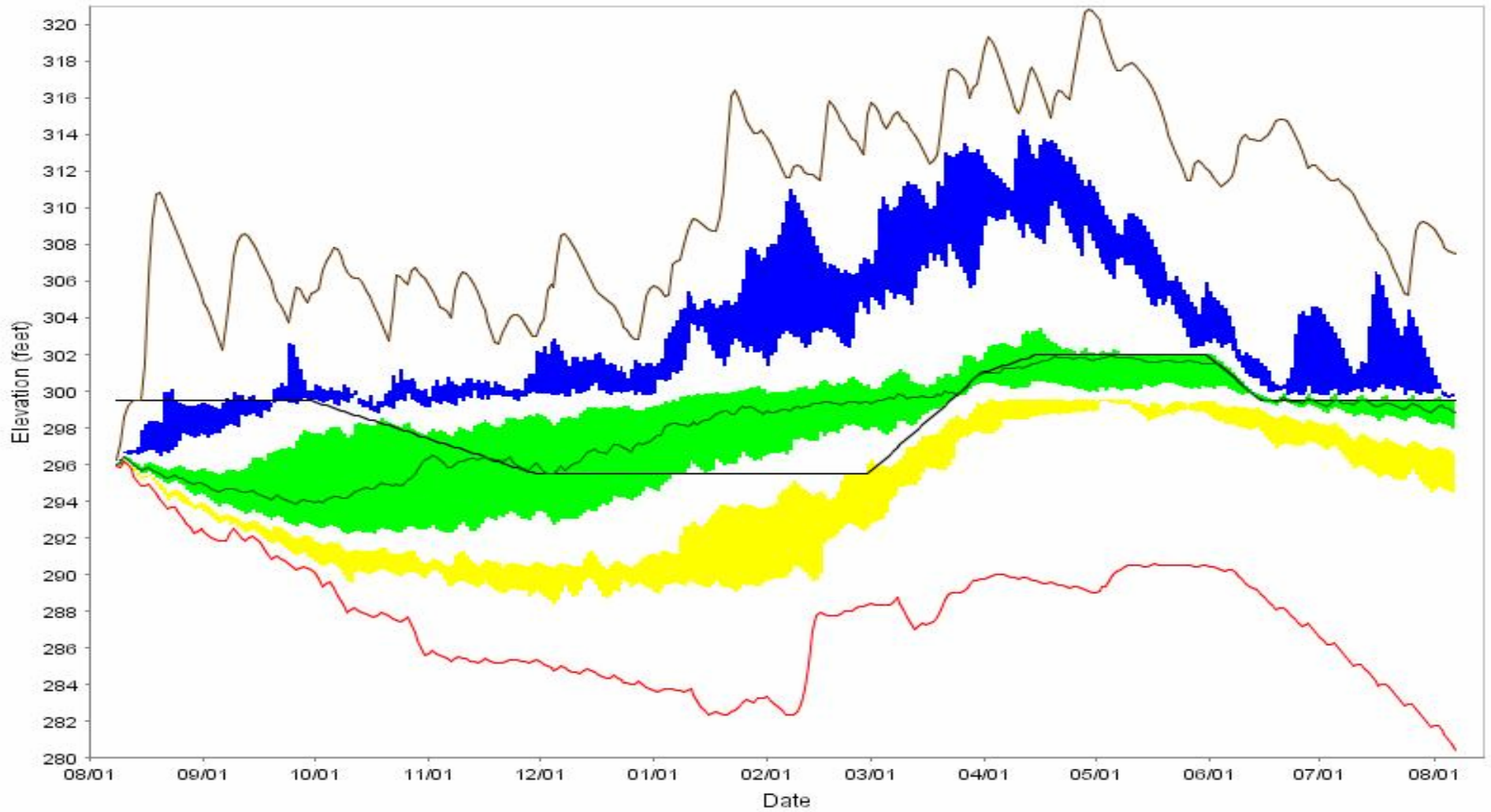


- Min — Median — Max — 80 — 60 — 40 — 20
- YELLOW (LOWER) BAND = 5- TO 10-PERCENTILE
- GREEN (MIDDLE) BAND = 25- TO 75-PERCENTILE
- ▲ BLUE (UPPER) BAND = 90- TO 95-PERCENTILE

	Probability (%) of Being Below					
	JL Elev 211 ft	August 8, 2008 Forecast Water Quality Pool				
		100% WQ Pool	80% WQ Pool	60% WQ Pool	40%	20%
1-Sep	<1.3	76.9	42.3	<1.3	<1.3	<1.3
15-Sep	<1.3	71.8	42.3	19.2	<1.3	<1.3
1-Oct	2.6	78.2	48.7	23.1	3.8	<1.3
15-Oct	5.1	74.4	47.4	30.8	6.4	<1.3
1-Nov	9	74.4	50	34.6	11.5	<1.3
15-Nov	10.3	56.4	41.0	30.8	16.7	<1.3

Kerr Lake Elevation Forecast

Initial Elevations: Kerr 295.91 ft, Leesville 609.48 ft, Philpott 966.05 ft
(08/08/2008 - 08/07/2009)



- Min — Median — Max — Guide Curve
- YELLOW (LOWER) BAND = 5- TO 10-PERCENTILE
- GREEN (MIDDLE) BAND = 25- TO 75-PERCENTILE
- BLUE (UPPER) BAND = 90- TO 95-PERCENTILE

John H Kerr Lake

	John H Kerr Probability of Being Below	
	Elevation 295ft	Elevation 297ft
15-Aug	3.8	92.4
1-Sep	49.4	86.1
15-Sep	62.0	78.5
1-Oct	60.8	73.4
15-Oct	53.2	69.6
1-Nov	46.8	73.4