



DWQ

# JORDAN LAKE MONITORING

# SL 2009-0216 3.(c)

## ○ The Department shall:

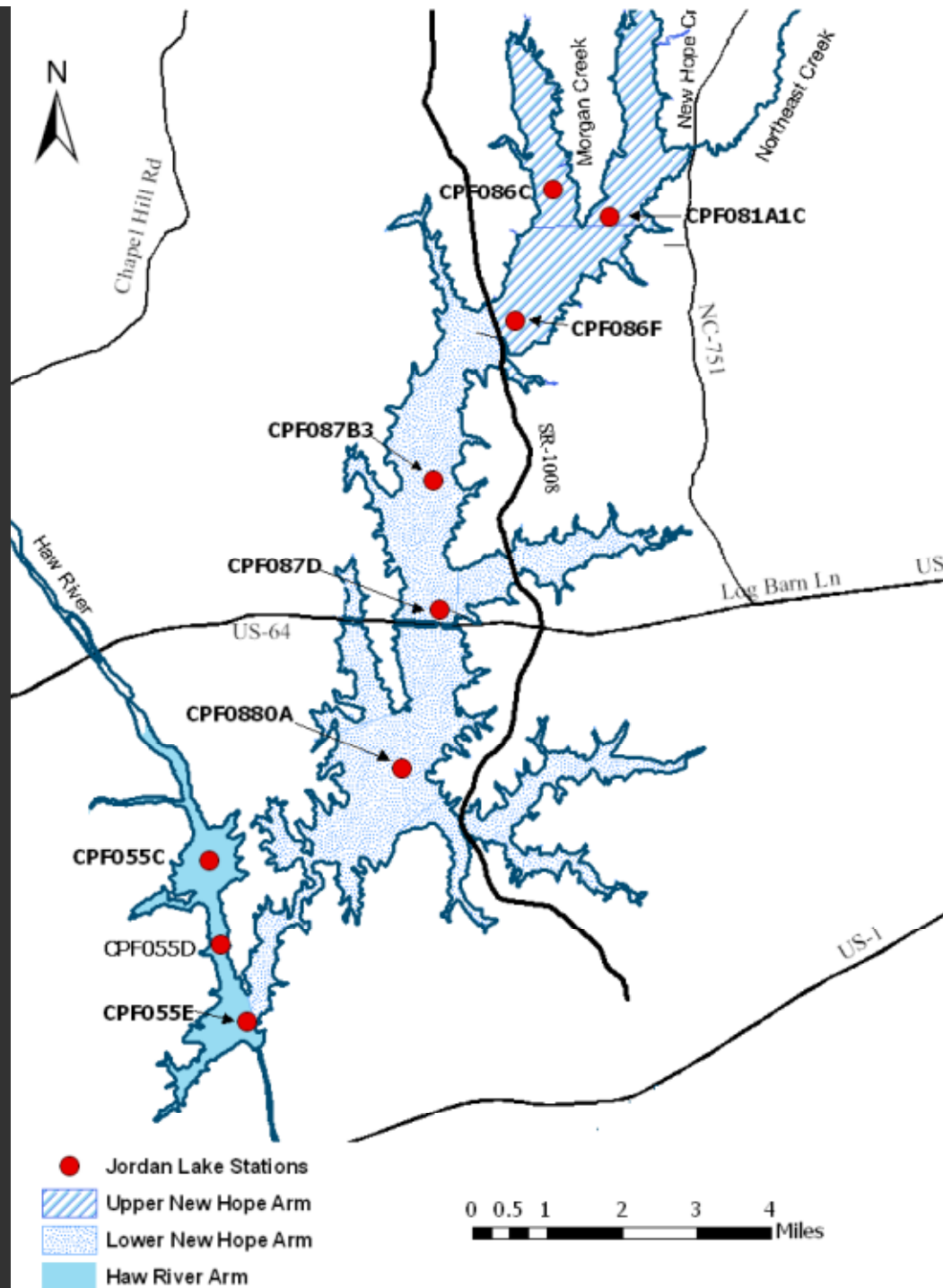
- Maintain an ongoing program to **monitor water quality** in each arm of Jordan Reservoir.
- [On March 1, 2014] **report the results** of monitoring in each arm of Jordan Reservoir to the Environmental Review Commission.
- Submit an updated monitoring report under this section **every three years** thereafter *until such time as the lake is no longer impaired* by nutrient pollution

# Adaptive Management (15A NCAC 02B .0262)

- The Division shall **evaluate the effectiveness** of the Jordan nutrient strategy after at least ten years following the effective date and periodically thereafter as part of the review of the Cape Fear River Basinwide Water Quality Plan.
- The Division shall base its evaluation on, at a minimum, **trend analyses** as described in the monitoring section of the B. Everett Jordan Reservoir, North Carolina Nutrient Management Strategy and Total Maximum Daily Load, and **lake use support assessments**.

# Jordan Lake Monitoring

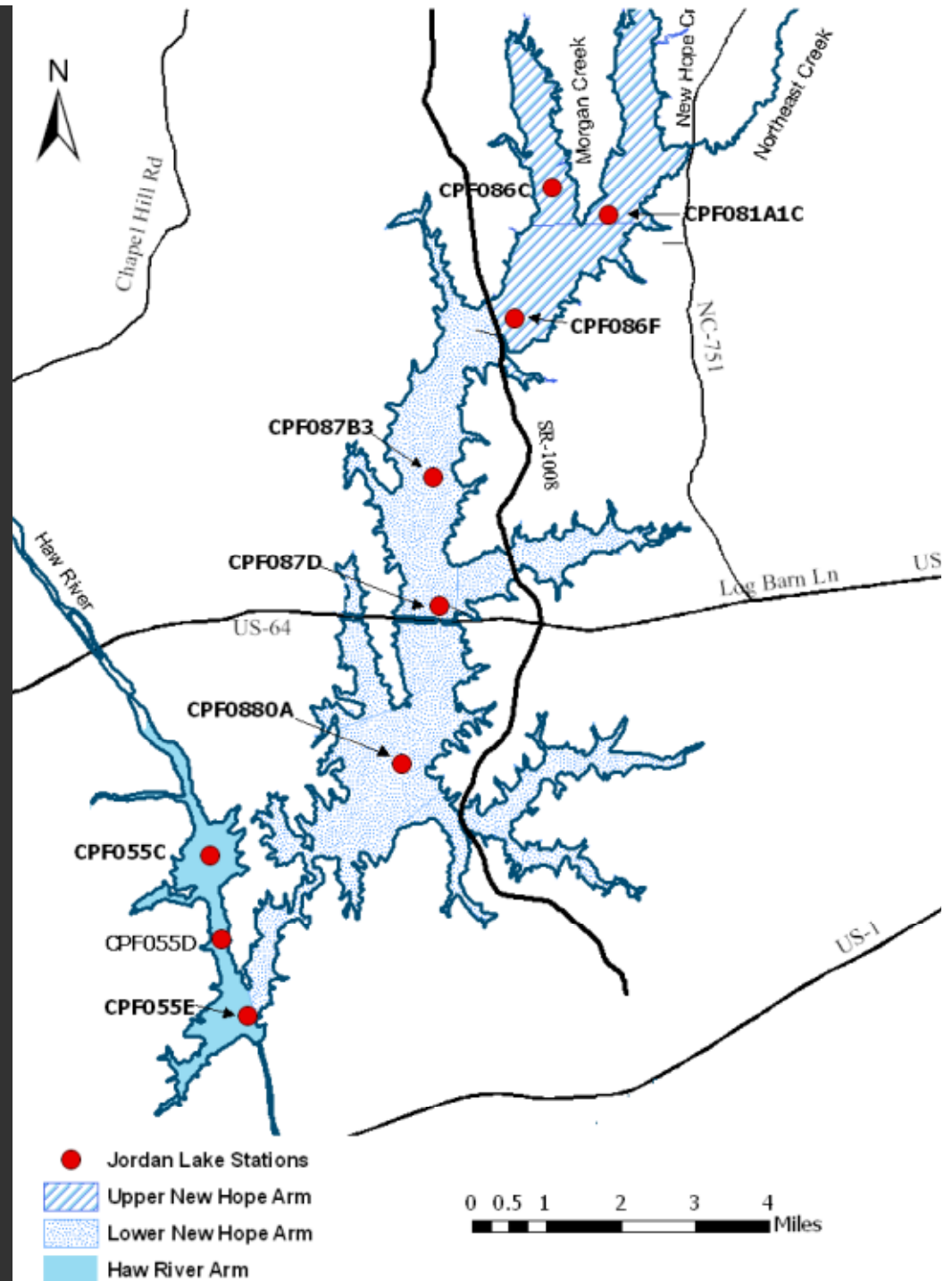
- *Nutrient and chlorophyll trends in lake*
- *Lake use support assessment*



# Jordan Lake Monitoring

2X / month  
May – September

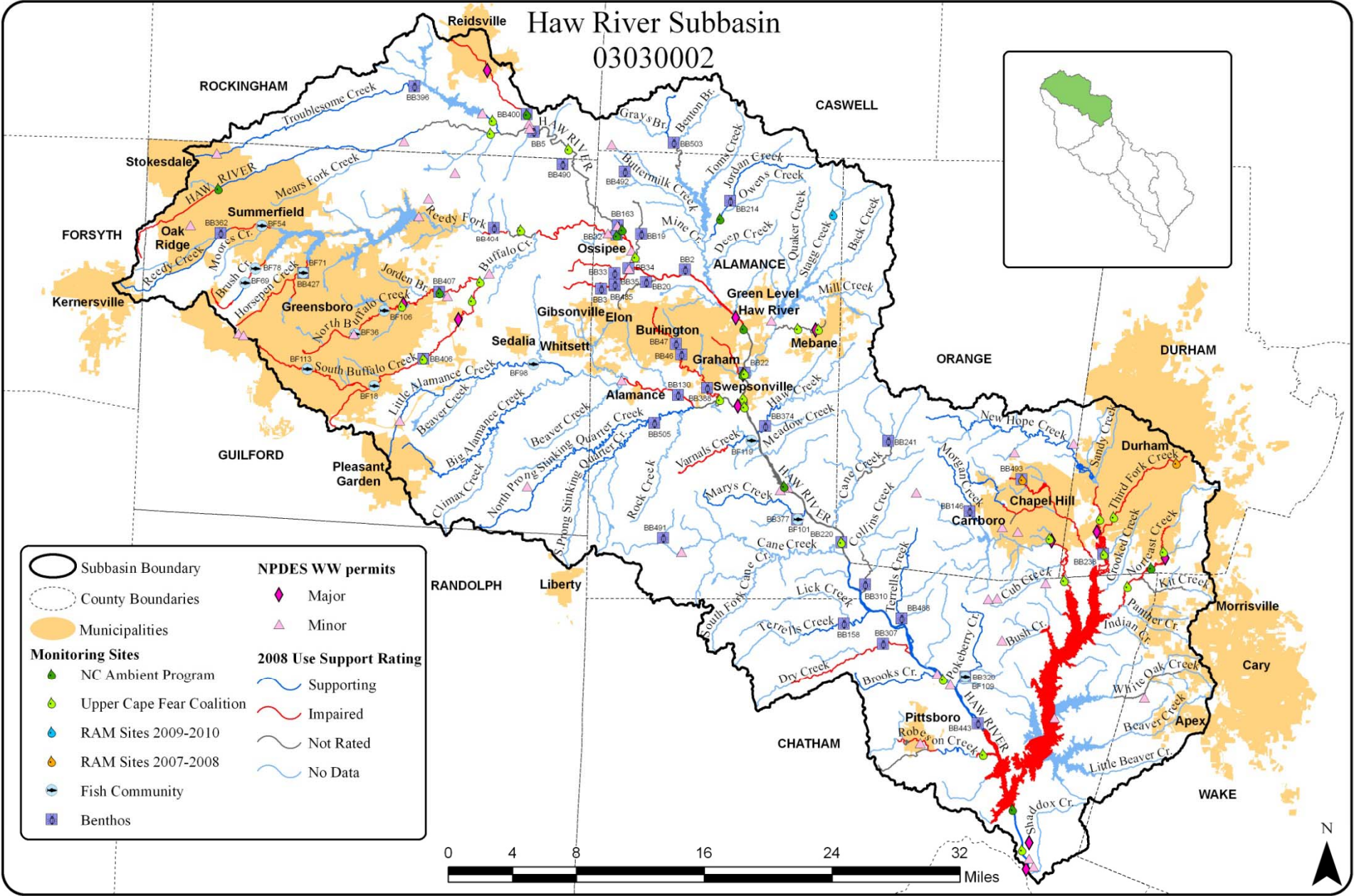
1X / month  
October – April



# Jordan Watershed Monitoring

- DWQ & Upper Cape Fear RBA
- Stream use support assessments
- Stream nutrient trend analyses

# Haw River Subbasin 03030002



	Subbasin Boundary		NPDES WW permits Major
	County Boundaries		NPDES WW permits Minor
	Municipalities		2008 Use Support Rating Supporting
	Monitoring Sites NC Ambient Program		2008 Use Support Rating Impaired
	Monitoring Sites Upper Cape Fear Coalition		2008 Use Support Rating Not Rated
	Monitoring Sites RAM Sites 2009-2010		2008 Use Support Rating No Data
	Monitoring Sites RAM Sites 2007-2008		
	Monitoring Sites Fish Community		
	Monitoring Sites Benthos		



Figure 4 Cape Fear River Subbasin 03-06-01

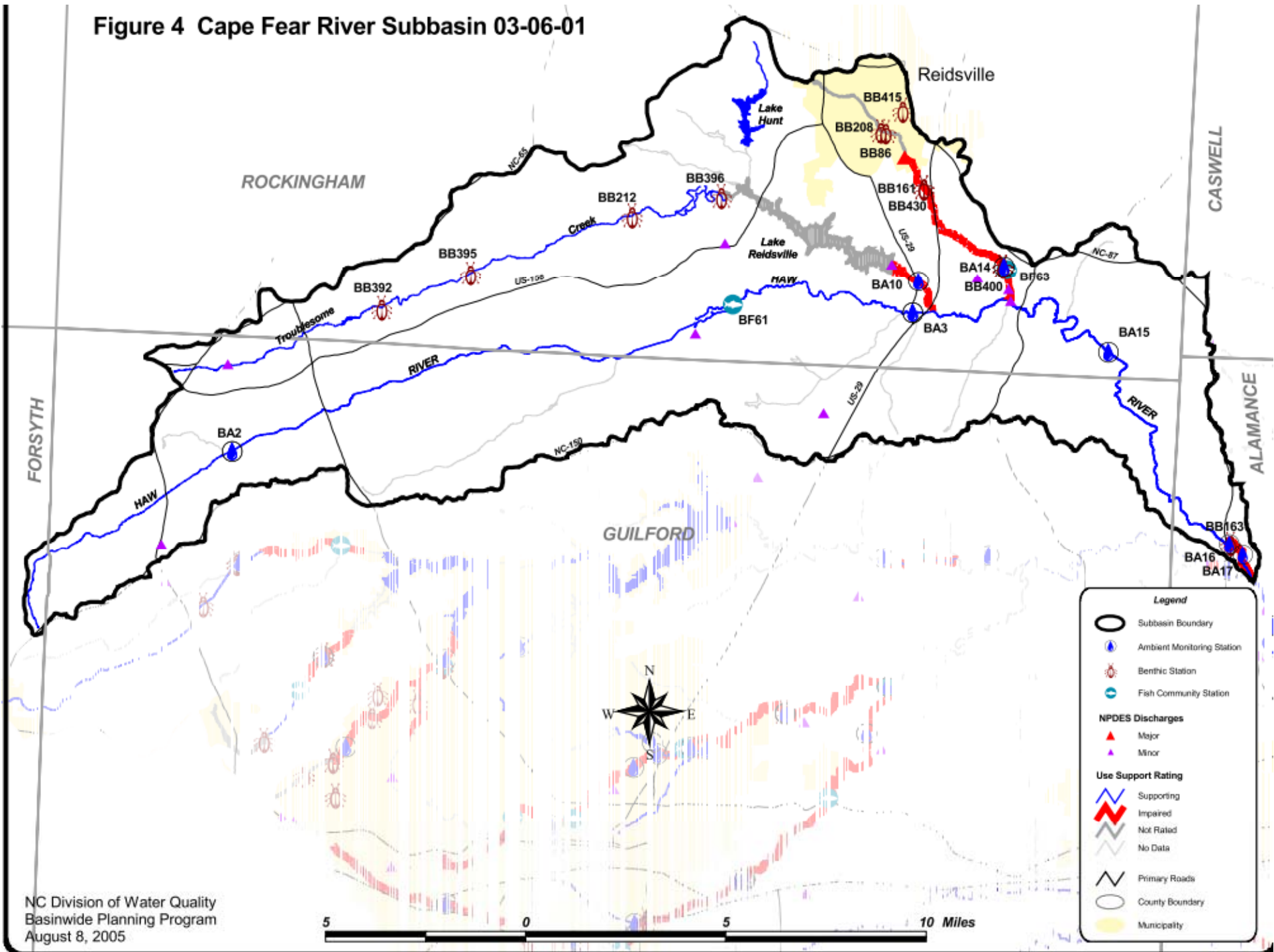




Figure 5 Cape Fear River Subbasin 03-06-02

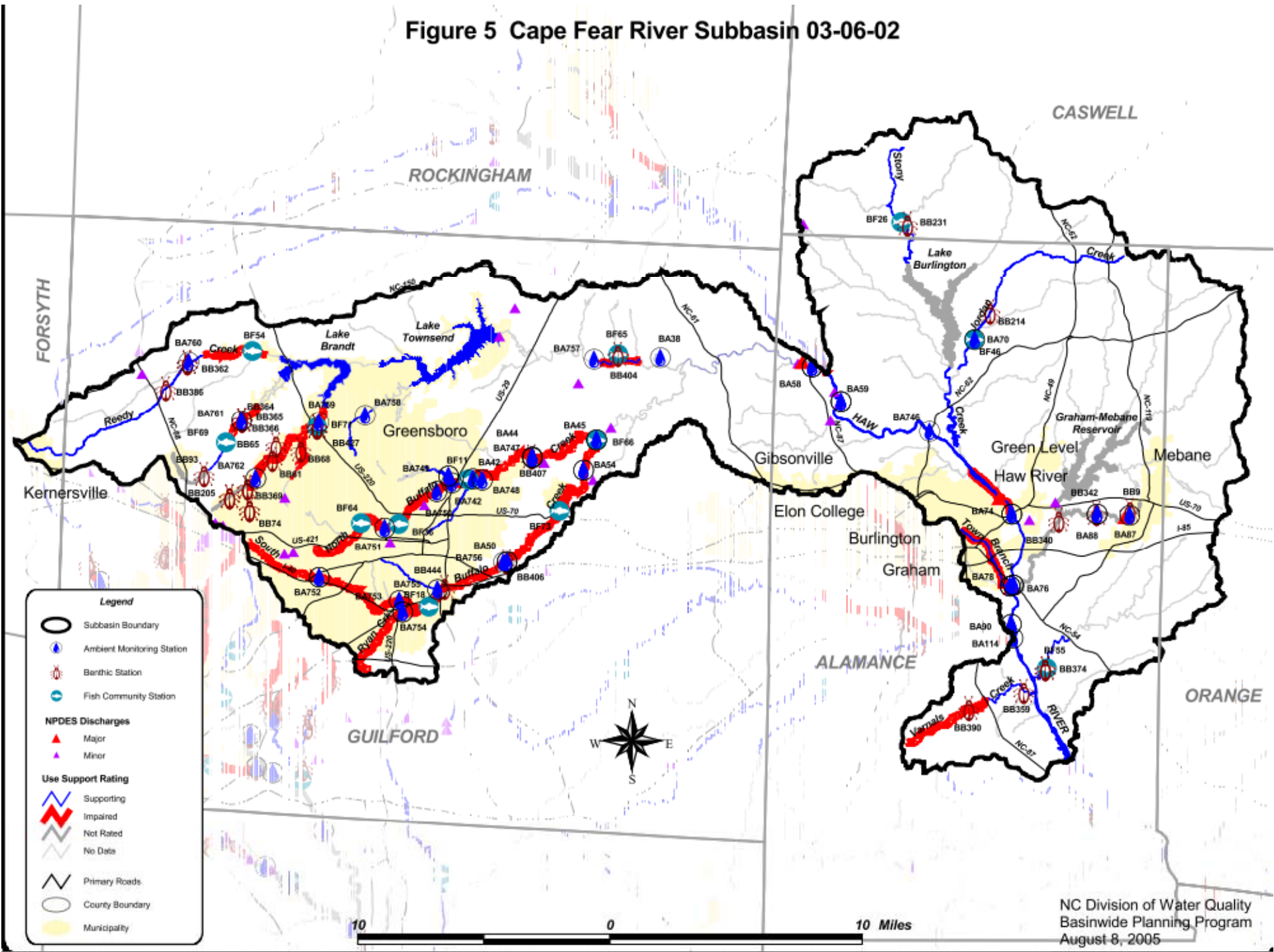
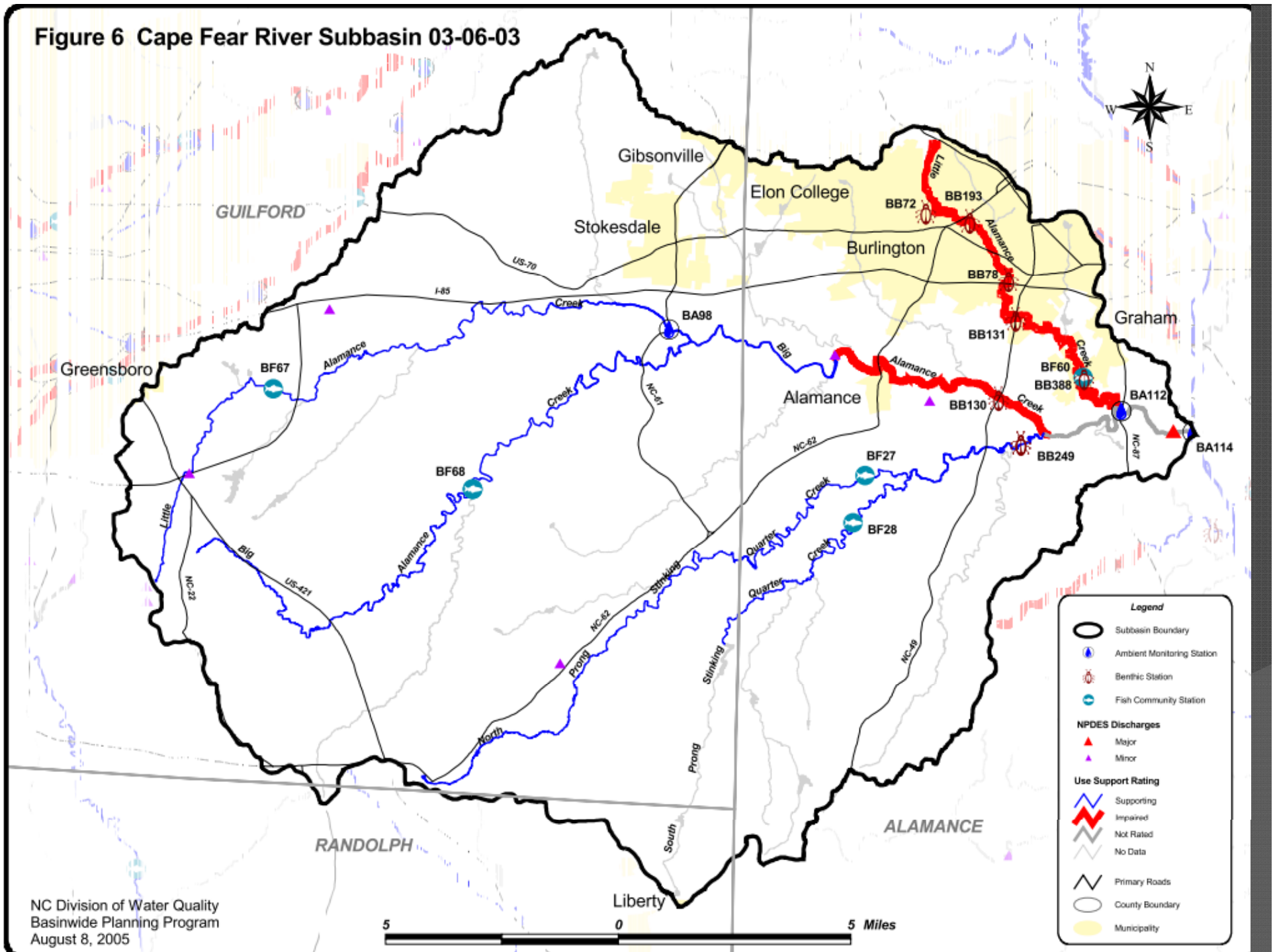


Figure 6 Cape Fear River Subbasin 03-06-03



**Figure 7 Cape Fear River Subbasin 03-06-04**

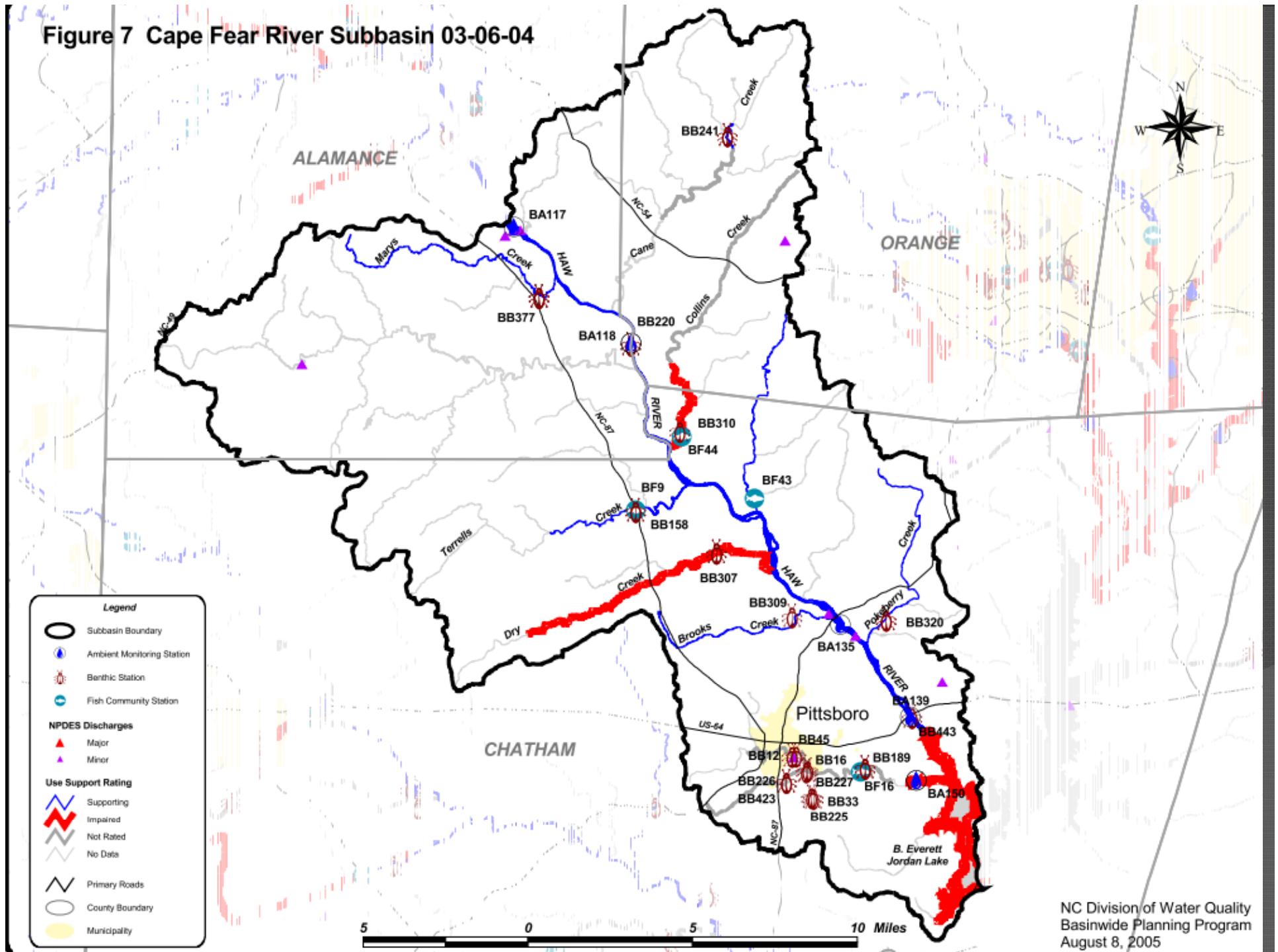
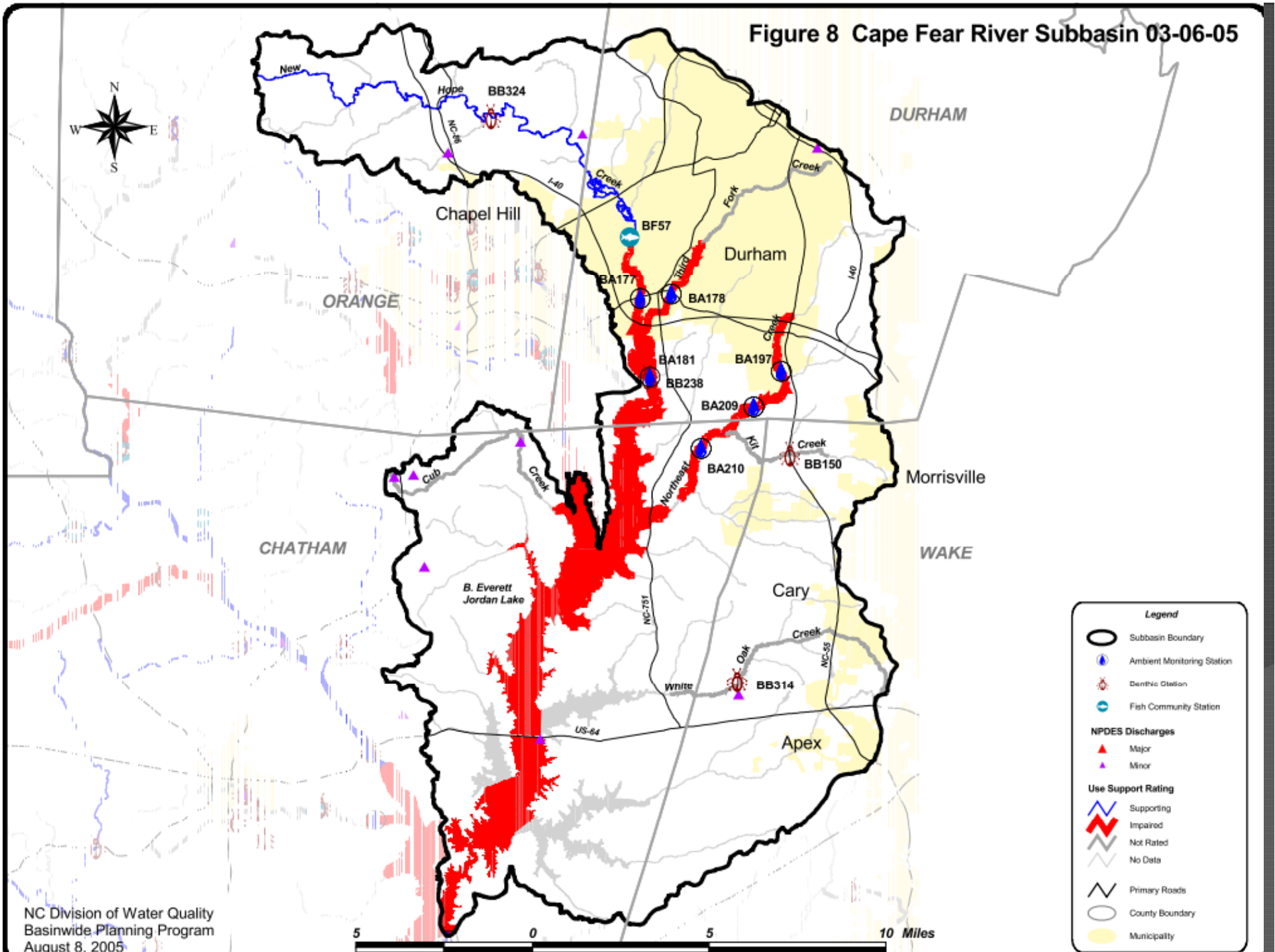


Figure 8 Cape Fear River Subbasin 03-06-05



# Adaptive Management (15A NCAC 02B .0262)

- The Division **may** also develop additional watershed modeling or other source characterization work.
- Any nutrient response modeling and monitoring on which any recommendation for adjustment to strategy goals may be based shall meet the criteria set forth in the Clean Water [Responsibility] Act, G.S. 143-215.1(c5), and meet or exceed criteria used by the Division for the monitoring and modeling used to establish the goals in Item (5) of this Rule.
- Any modification to these rules as a result of such evaluations **would require additional rulemaking.**