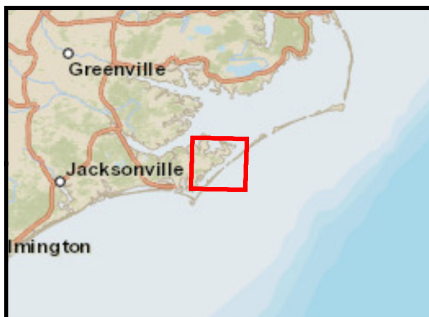
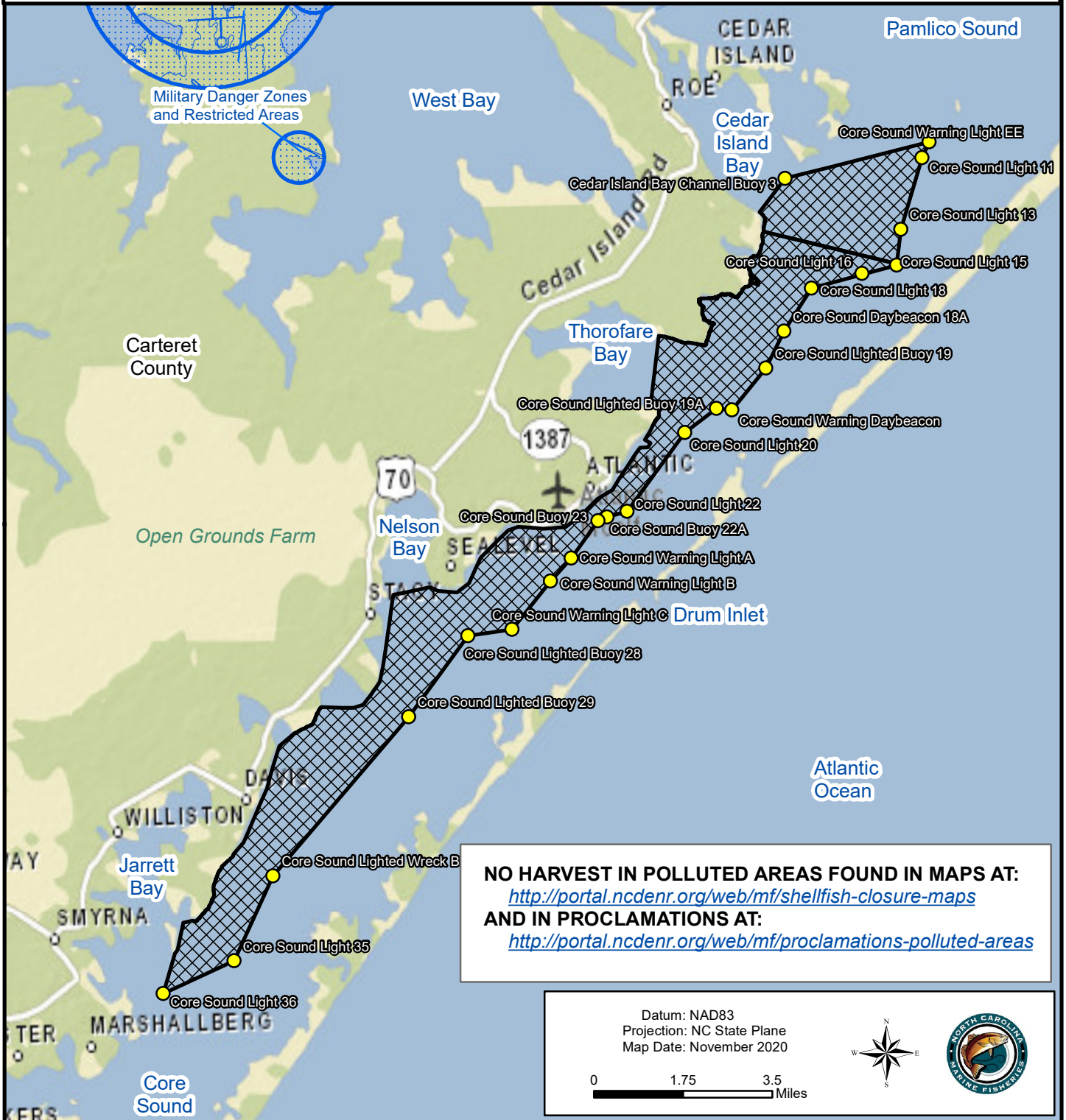


Maps are provided for illustrative purposes to assist the public.
 Maps do not supersede existing rules or proclamations.



PROCLAMATION SF-7-2020

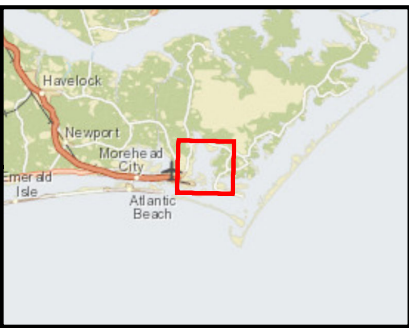
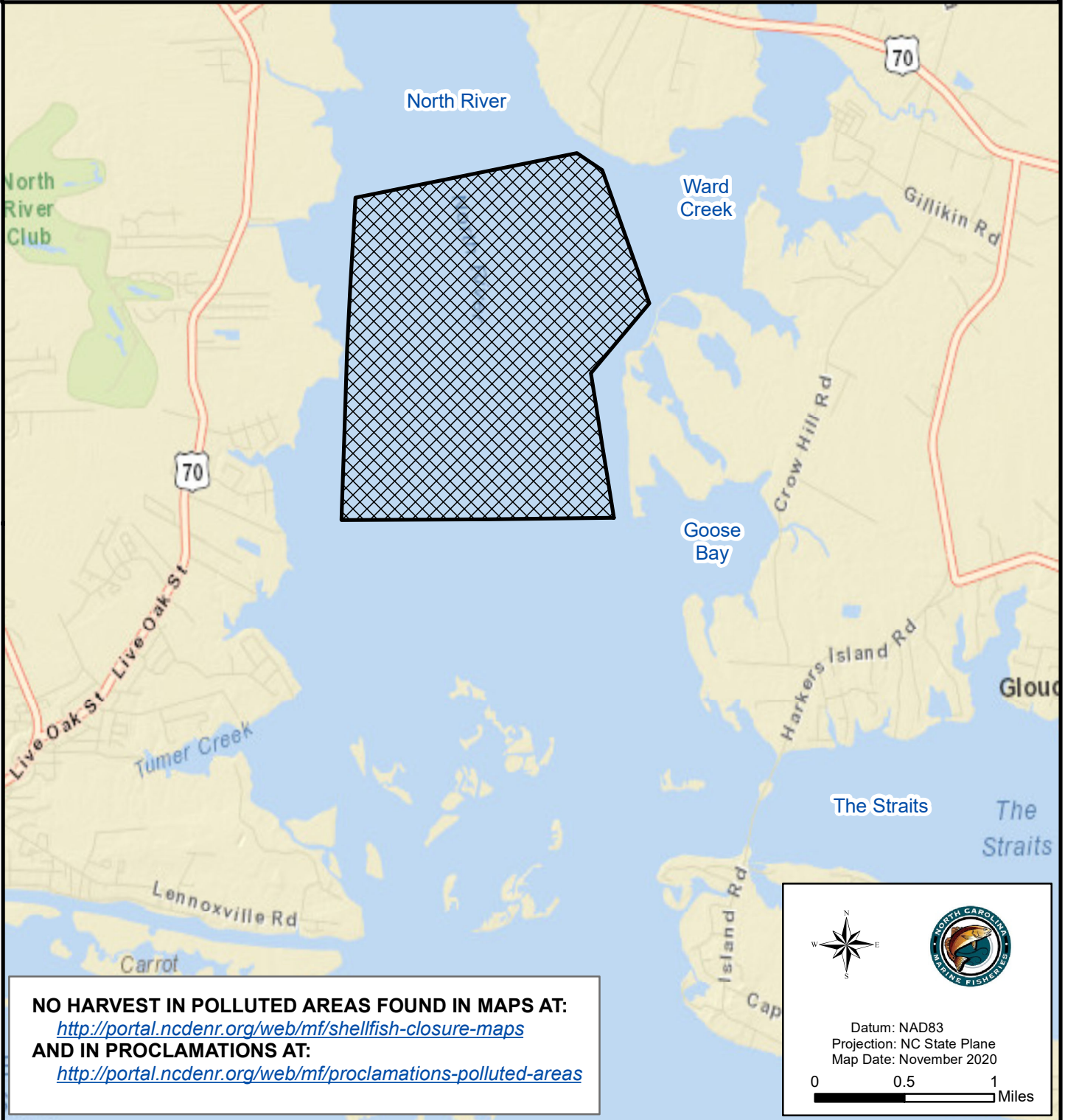
I.A. Core Sound

Map 1

 Mechanical Clam Harvesting Areas


MECHANICAL CLAM HARVESTING
ALLOWED IN HATCHED AREAS

Maps are provided for illustrative purposes to assist the public.
Maps do not supersede existing rules or proclamations.



PROCLAMATION SF-7-2020

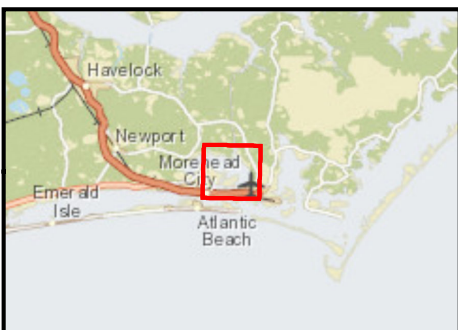
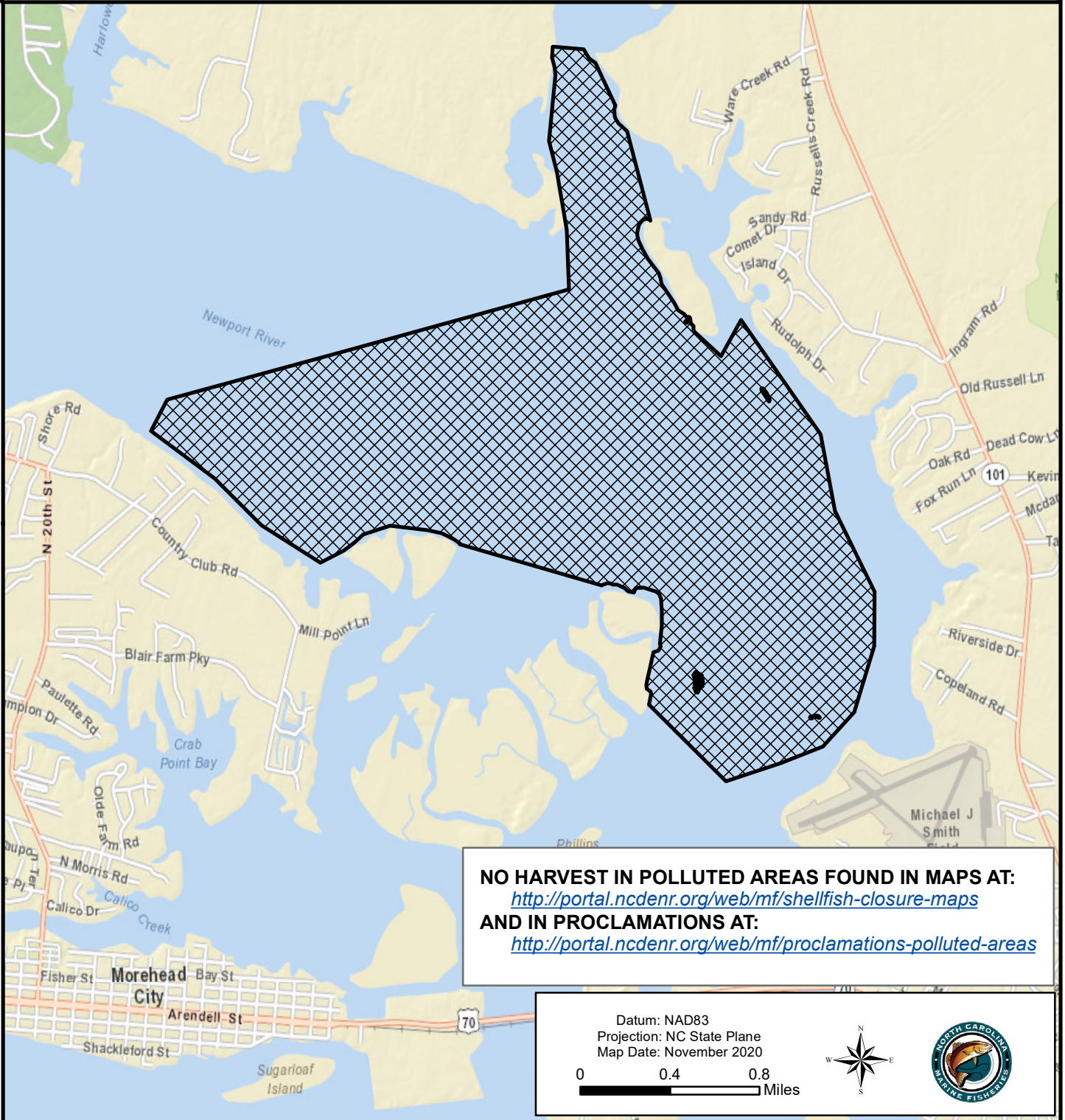
I.A. North River

 Mechanical Clam Harvesting Areas

Map 2

**MECHANICAL CLAM HARVESTING
ALLOWED IN HATCHED AREAS**

Maps are provided for illustrative purposes to assist the public.
Maps do not supersede existing rules or proclamations.



PROCLAMATION SF-7-2020

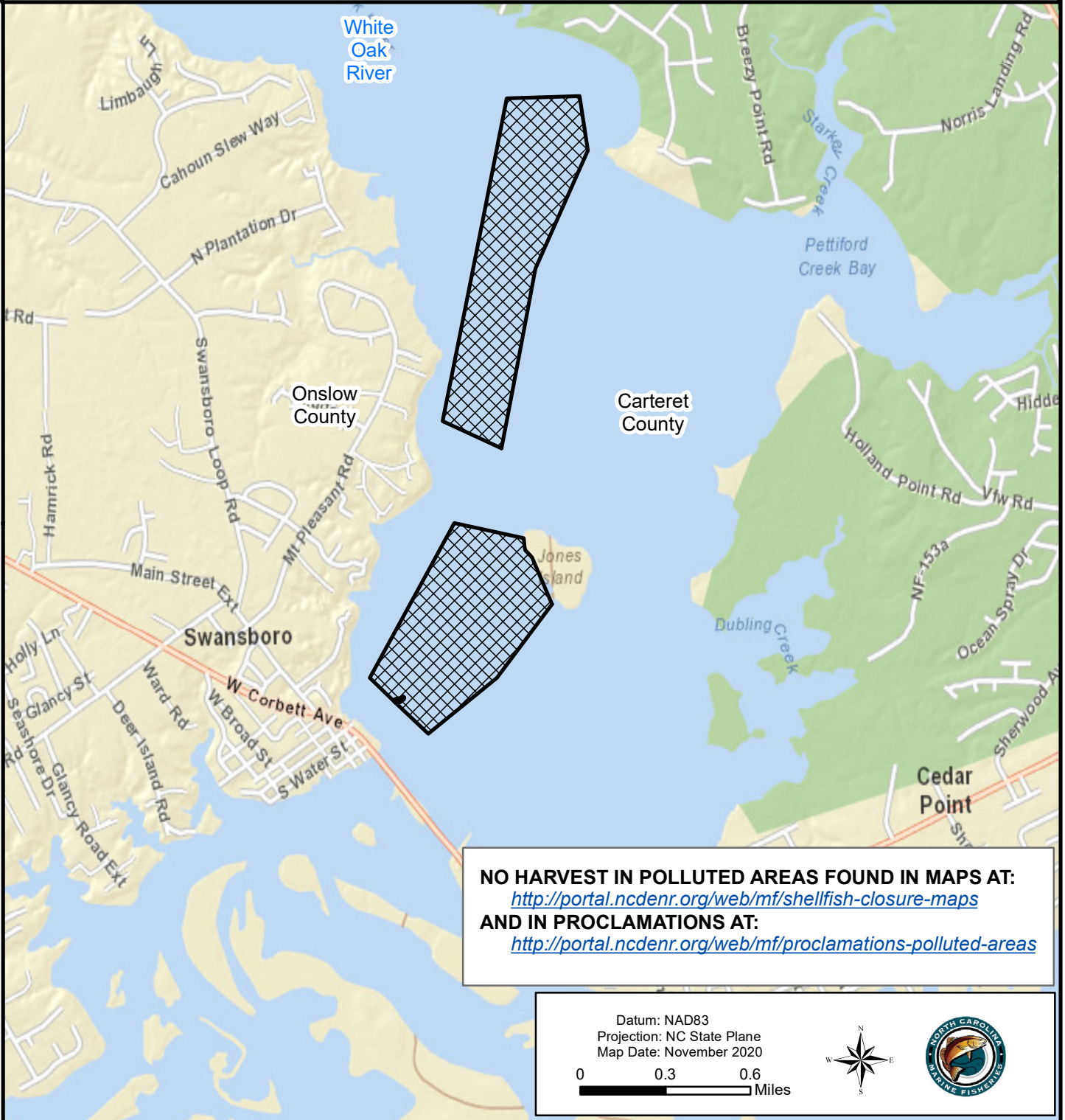
I.A. Newport River

Map 3

 Mechanical Clam Harvesting Areas


**MECHANICAL CLAM HARVESTING
ALLOWED IN HATCHED AREAS**

Maps are provided for illustrative purposes to assist the public.
Maps do not supersede existing rules or proclamations.



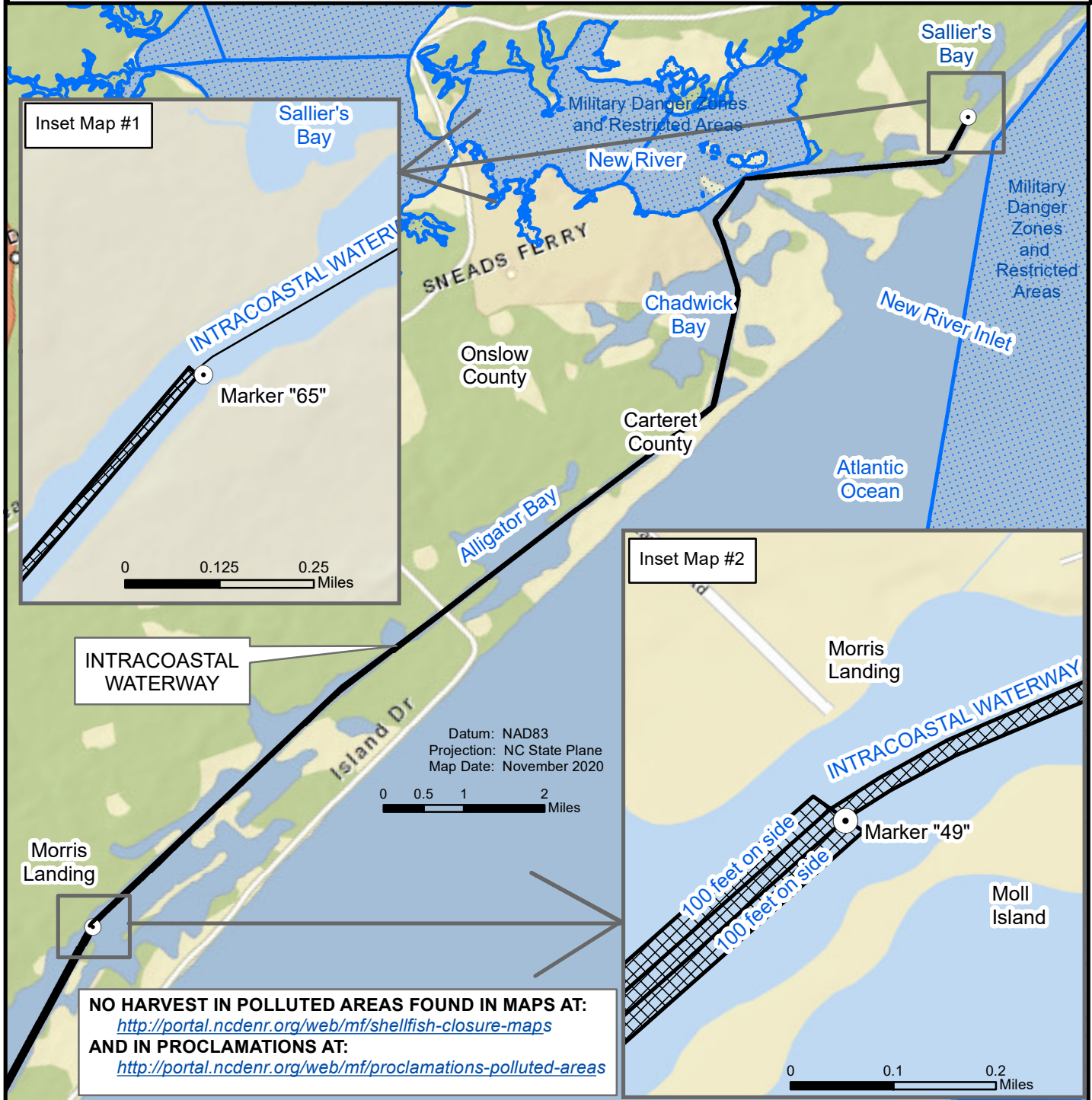
PROCLAMATION SF-7-2020

I.A. White Oak River

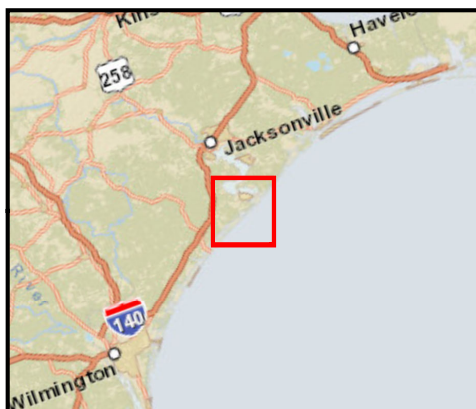
 Mechanical Clam Harvesting Areas

**MECHANICAL CLAM HARVESTING
ALLOWED IN HATCHED AREAS**

Maps are provided for illustrative purposes to assist the public.
 Maps do not supersede existing rules or proclamations.



NO HARVEST IN POLLUTED AREAS FOUND IN MAPS AT:
<http://portal.ncdenr.org/web/mf/shellfish-closure-maps>
AND IN PROCLAMATIONS AT:
<http://portal.ncdenr.org/web/mf/proclamations-polluted-areas>



PROCLAMATION SF-7-2020

I.C. Intracoastal Waterway, from
 Marker "65" south of Sallier's Bay,
 to Marker "49" at Morris Landing.



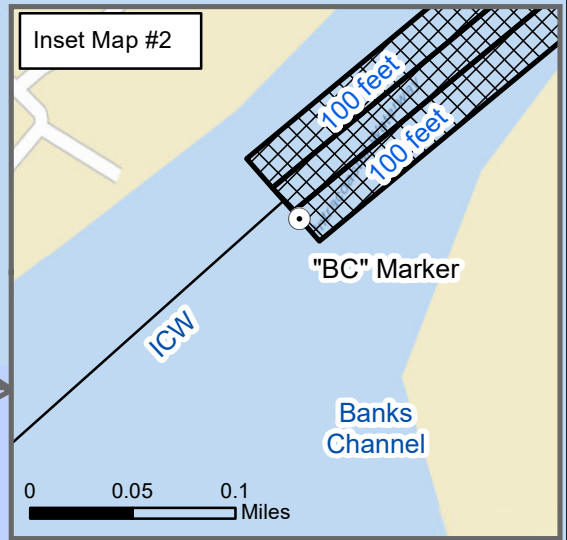
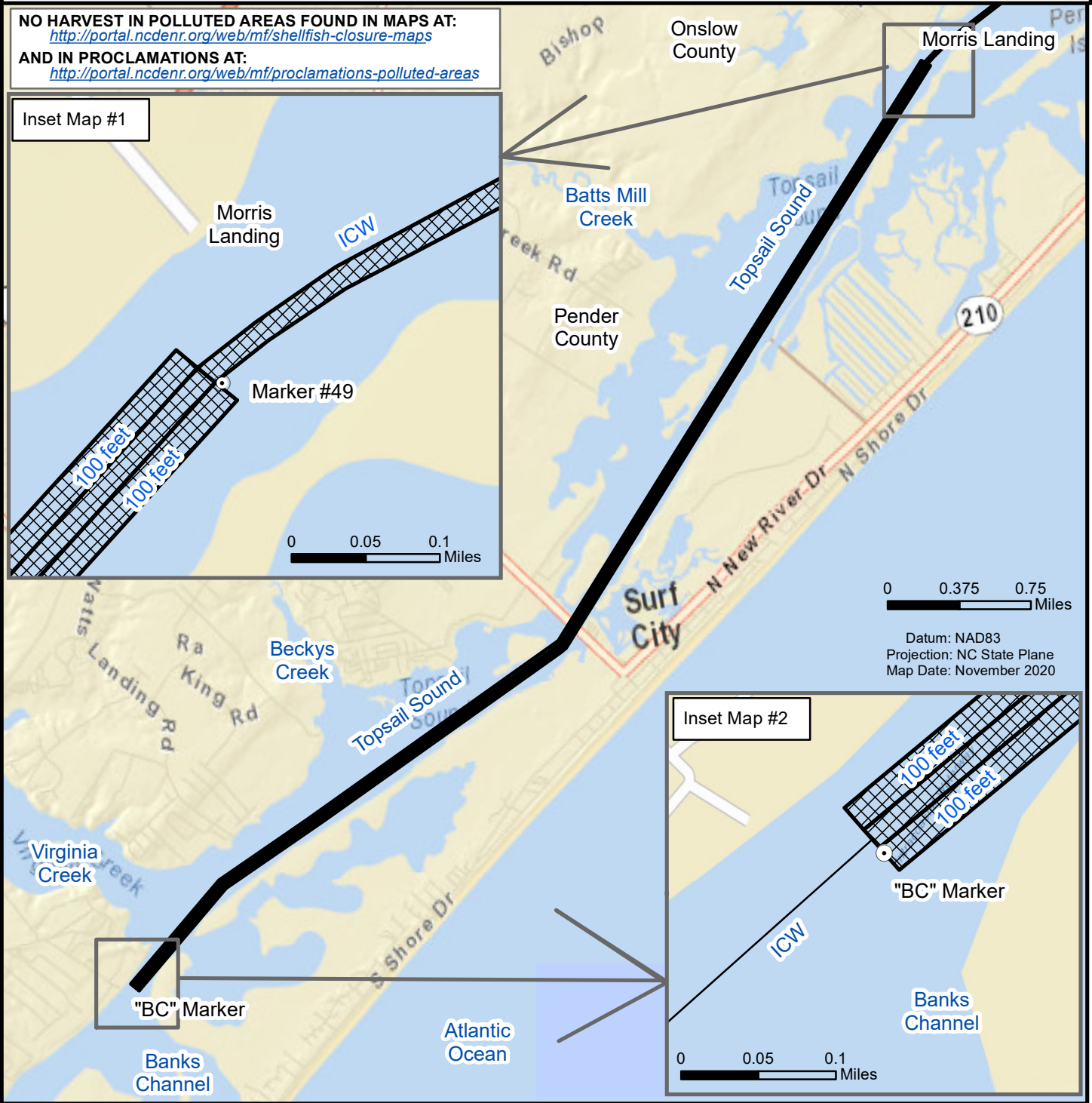
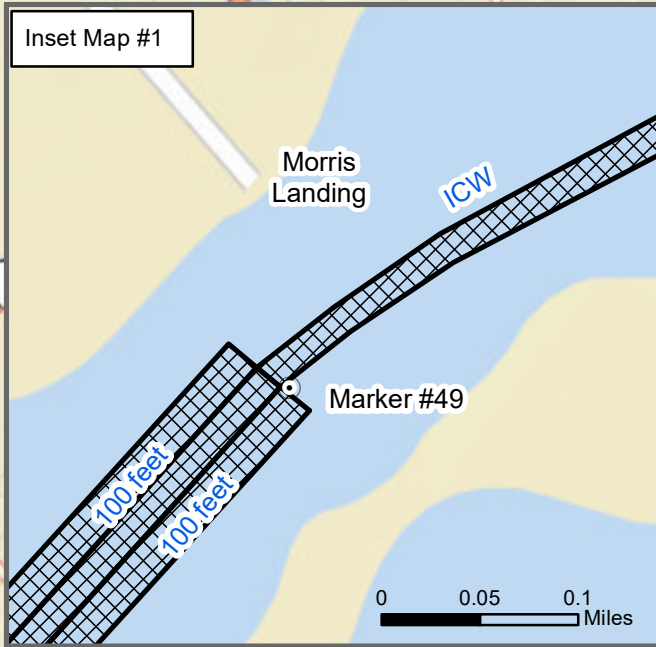
 Mechanical Clam Harvesting Areas

Map 5

MECHANICAL CLAM HARVESTING ALLOWED IN HATCHED AREAS

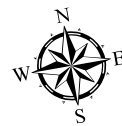
Maps are provided for illustrative purposes to assist the public.
 Maps do not supersede existing rules or proclamations.


NO HARVEST IN POLLUTED AREAS FOUND IN MAPS AT:
<http://portal.ncdenr.org/web/mf/shellfish-closure-maps>
AND IN PROCLAMATIONS AT:
<http://portal.ncdenr.org/web/mf/proclamations-polluted-areas>



PROCLAMATION SF-7-2020

I.D. within and 100 feet on either side of the Intracoastal Waterway from Marker #49 at Morris Landing to "BC" Marker at Banks Channel.



 Mechanical Clam Harvesting Areas

MECHANICAL CLAM HARVESTING ALLOWED IN HATCHED AREAS

Map 6