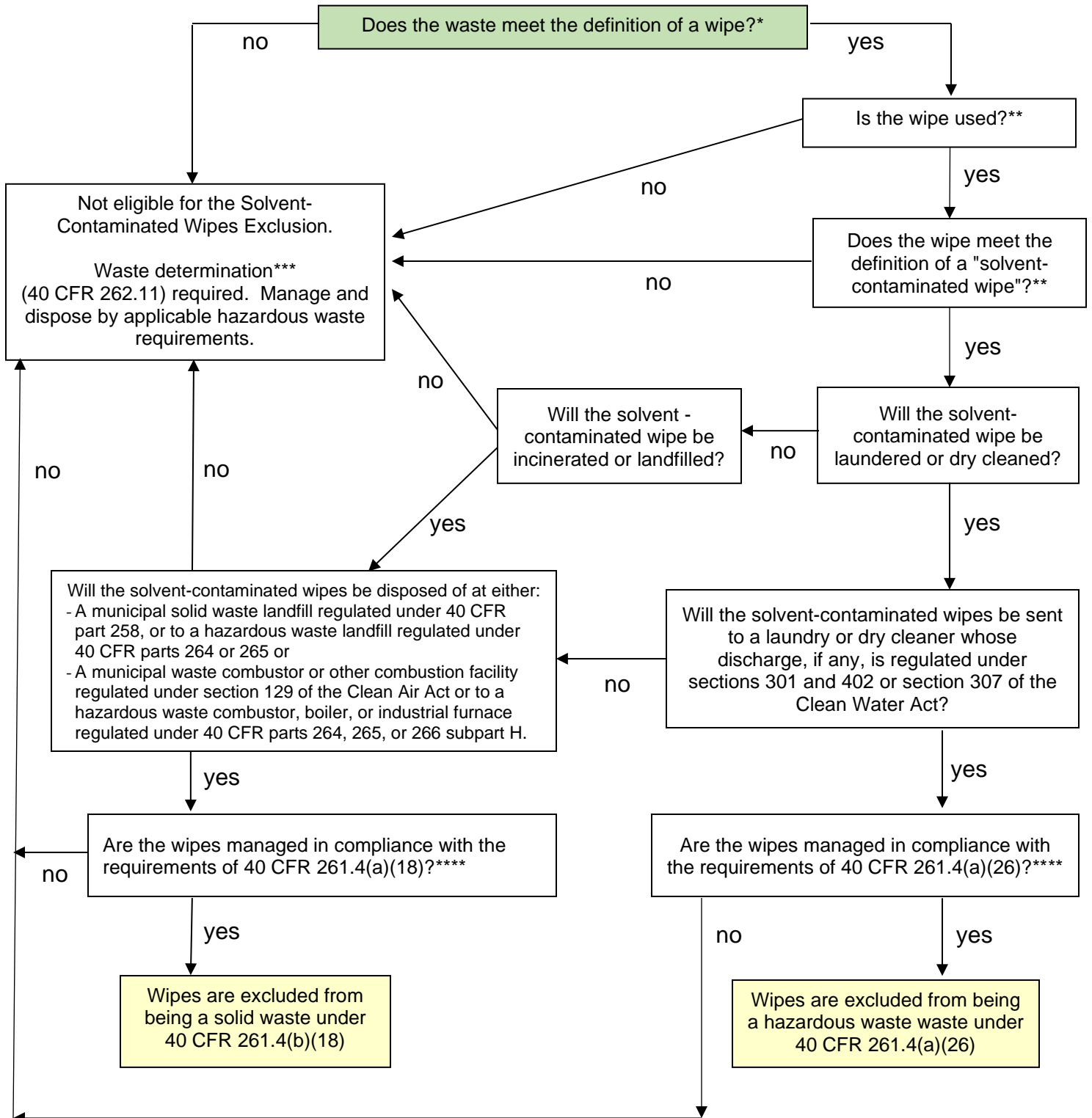




Solvent-Contaminated Wipes Exclusion Guidance

This flowchart describes the process for evaluating whether solvent-contaminated wipes are excluded from hazardous waste regulation. Solvent-contaminated wipes that are sent for cleaning and reuse are not a solid waste from the point of generation provided the conditions of 40 CFR 261.4(a)(26), adopted by reference at 15A NCAC 13A .0106(a) are met. Solvent-contaminated wipes, except for wipes that are hazardous waste due to the presence of trichloroethylene, that are sent for disposal are not hazardous wastes from the point of generation provided the conditions of 40 CFR 261.4(b)(18), adopted by reference at 15A NCAC 13A .0106(a) are met.



- * A "**wipe**" means a woven or non-woven shop towel, rag, pad, or swab made of wood pulp, fabric, cotton, polyester blends, or other material ([40 CFR 260.10](#)).
- Paper towels, cloth towels, rags, absorbent pads, swabs (like cotton swabs), and pad (cotton, polyester, or other) qualify as wipes under this definition.
 - Personal protective equipment (PPE) - like gloves, masks, aprons, lab coats, chemical suits; uniforms and clothing (like coveralls); mops and mop heads; floor mats; sponges; and mattresses do not qualify as a wipe under this definition.
 - The above list of items that qualify and do not qualify as a wipe is not exhaustive.

- ** A "**solvent-contaminated wipe**" ([40 CFR 260.10](#)) is a wipe that, after use or after cleaning up a spill, either:
- Contains one or more of the F001 through F005 solvents listed in [40 CFR 261.31](#) or the corresponding P- or U- listed solvent found in [40 CFR 261.33](#);
 - F001 through F005 solvents (or the corresponding P- or U- listed solvent) include the following: acetone, benzene, n-butanol, chlorobenzene, cresols, cyclohexanone, 1,2-dichlorobenzene, ethyl acetate, ethyl benzene, 2-ethoxyethanol, isobutanol, methanol, methyl ethyl ketone, methyl isobutyl ketone, methylene chloride, tetrachloroethylene, toluene, 1,1,2-trichloroethane, xylenes, and trichloroethylene (but only when on reusable wipes).
 - Exhibits a hazardous characteristic (found in [40 CFR 261 Subpart C](#)) when that characteristic results from a listed solvent; and/or
 - Examples include benzene, chlorobenzene, cresols, methyl ethyl ketone, tetrachloroethylene, and trichloroethylene (but trichloroethylene is only excluded when on reusable wipes).
 - Exhibits only the hazardous waste characteristic of ignitability found in [40 CFR 261.21](#) due to the presence of solvents that are not listed in 40 CFR 261.
 - If the wipe is only contaminated with a solvent that was characteristic for ignitability (D001) and the wipe no longer meets the definition of ignitable ([40 CFR 261.21](#)), the site may perform a waste determination ([40 CFR 262.11](#)) to show the wipe is non-hazardous. If the wipe is non-hazardous, it would not need to be managed by the conditions of this exclusion.
 - Solvent-contaminated wipes that contain listed hazardous waste other than solvents, or exhibit the characteristic of toxicity, corrosivity, or reactivity due to contaminants other than solvents, are not eligible for the exclusions at [40 CFR 261.4\(a\)\(26\)](#) and [40 CFR 261.4\(b\)\(18\)](#).
 - Solvent-contaminated wipes that have not been used do not qualify for the exclusion.

*** **Hazardous Waste Determination** ([40 CFR 262.11](#)):

Site generating a waste that does not meet the conditions of the solvent-contaminated wipe exclusion must use generator knowledge or testing to determine whether the waste is a hazardous waste. See [40 CFR 262.11](#) for specific details.

- Contact the NCDEQ, Hazardous Waste Section, Environmental Chemist for the region in which your facility is located if you have questions on representative screening/sampling (contact information and region provided on the map at this link):
https://files.nc.gov/ncdeq/Waste%20Management/DWM/HW/Compliance/Compliance_Map_by_Inspector.pdf

**** An overview of the requirements for [40 CFR 261.4\(a\)\(26\)](#) and [40 CFR 261.4\(b\)\(18\)](#) are described on pages 3 and 4 of this document.

Who do I contact if I have questions?

- Questions about **hazardous waste, waste determinations, solvent contaminated wipes** or **using this flowchart**:
 - Contact your Hazardous Waste Section Inspector (contact information and region provided on the map at this link):
https://files.nc.gov/ncdeq/Waste%20Management/DWM/HW/Compliance/Compliance_Map_by_Inspector.pdf



Solvent-Contaminated Wipes Exclusion Requirements for Generators

This table provides an overview of the solvent-contaminated wipes conditional exclusion provisions and how they apply to the generators of the solvent-contaminated wipes when the wipes are accumulated, stored, and transported. Solvent contaminated wipes that are sent for cleaning and reuse are not a solid waste from the point of generation provided the conditions of 40 CFR 261.4(a)(26), adopted by reference at 15A NCAC 13A .0106(a) are met. Solvent-contaminated wipes, except for wipes that are hazardous waste due to the presence of trichloroethylene, that are sent for disposal are not hazardous wastes from the point of generation provided the conditions of 40 CFR 261.4(b)(18), adopted by reference at 15A NCAC 13A .0106(a) are met.

Description of Requirement	Reusable Solvent-Contaminated Wipes 40 CFR 261.4(a)(26)	Disposable Solvent-Contaminated Wipes 40 CFR 261.4(b)(18)
Definitions: Must meet the definition of "wipe" and "solvent-contaminated wipe" as defined in 40 CFR 260.10	Excluded solvent-contaminated wipes must meet these definitions	Excluded solvent-contaminated wipes must meet these definitions
Container Requirements: Solvent-contaminated wipes, when accumulated, stored, and transported must be placed in:	40 CFR 261.4(a)(26)(i)	40 CFR 261.4(b)(18)(i)
- Non-leaking containers	40 CFR 261.4(a)(26)(i)	40 CFR 261.4(b)(18)(i)
- Closed containers	40 CFR 261.4(a)(26)(i)	40 CFR 261.4(b)(18)(i)
- Container labeled "Excluded Solvent-Contaminated Wipes"	40 CFR 261.4(a)(26)(i)	40 CFR 261.4(b)(18)(i)
- Container that can contain any free liquids (should free liquids occur)	40 CFR 261.4(a)(26)(i)	40 CFR 261.4(b)(18)(i)
Accumulation time limit: Solvent-contaminated wipes may be accumulated by the generator for up to 180 days from the start date of accumulation for each container prior to being sent for disposal.	40 CFR 261.4(a)(26)(ii)	40 CFR 261.4(b)(18)(ii)
No Free Liquids when transported off-site: - At the point of being transported for disposal, the solvent-contaminated wipes must contain no free liquids as defined in 40 CFR 260.10. - Free liquids (40 CFR 260.10): means liquids which readily separate from the solid portion of a waste under ambient temperature and pressure	40 CFR 261.4(a)(26)(iii)	40 CFR 261.4(b)(18)(iii)
Free Liquid Management: - Free liquids removed from the solvent-contaminated wipes or from the container holding the wipes must be managed according to the applicable regulations found in 40 CFR 260 through 273.	40 CFR 261.4(a)(26)(iv)	40 CFR 261.4(b)(18)(iv)

Solvent-Contaminated Wipes Exclusion Requirements for Generators (continued)

Description of Requirement	Reusable Solvent-Contaminated Wipes 40 CFR 261.4(a)(26)	Disposable Solvent-Contaminated Wipes 40 CFR 261.4(b)(18)
<p>Documentation Requirements for solvent-contaminated wipes:</p>	<p style="text-align: center;">40 CFR 261.4(a)(26)(v)</p> <ul style="list-style-type: none"> - Name and address of the laundry/dry cleaner that is receiving the solvent-contaminated wipes - Documentation that the 180-day accumulation time limit is being met - Description of the process the generator is using to ensure the solvent contaminated wipes contains no free liquids at the point of being laundered/dry cleaned on-site or at the point they are transported off-site for laundering/dry cleaning. - Documentation of claims that materials are not solid wastes or are conditionally exempt from regulation (40 CFR 261.2(f)). 	<p style="text-align: center;">40 CFR 261.4(b)(18)(v)</p> <ul style="list-style-type: none"> - Name and address of the landfill or combustor that is receiving the solvent-contaminated wipes - Documentation that the 180-day accumulation time limit is being met - Description of the process the generator is using to ensure the solvent contaminated wipes contains no free liquids at the point they are transported off-site for disposal in a landfill or by incineration. - Documentation of claims that materials are not solid wastes or are conditionally exempt from regulation (40 CFR 261.2(f)).
<p>Required Permits for Management of solvent-contaminated wipes</p>	<p style="text-align: center;">40 CFR 261.4(a)(26)(vi)</p> <p>Reusable solvent-contaminated wipes must be sent to a laundry or dry cleaner whose discharge, if any, is regulated under sections 301 and 402 or section 307 of the Clean Water Act.</p>	<p style="text-align: center;">40 CFR 261.4(b)(18)(vi)</p> <p>Disposable solvent contaminated wipes must be disposed at:</p> <ul style="list-style-type: none"> - A municipal solid waste landfill regulated under 40 CFR part 258, or to a hazardous waste landfill regulated under 40 CFR parts 264 or 265 - A municipal waste combustor or other combustion facility regulated under section 129 of the Clean Air Act or to a hazardous waste combustor, boiler, or industrial furnace regulated under 40 CFR parts 264, 265, or 266 subpart H.