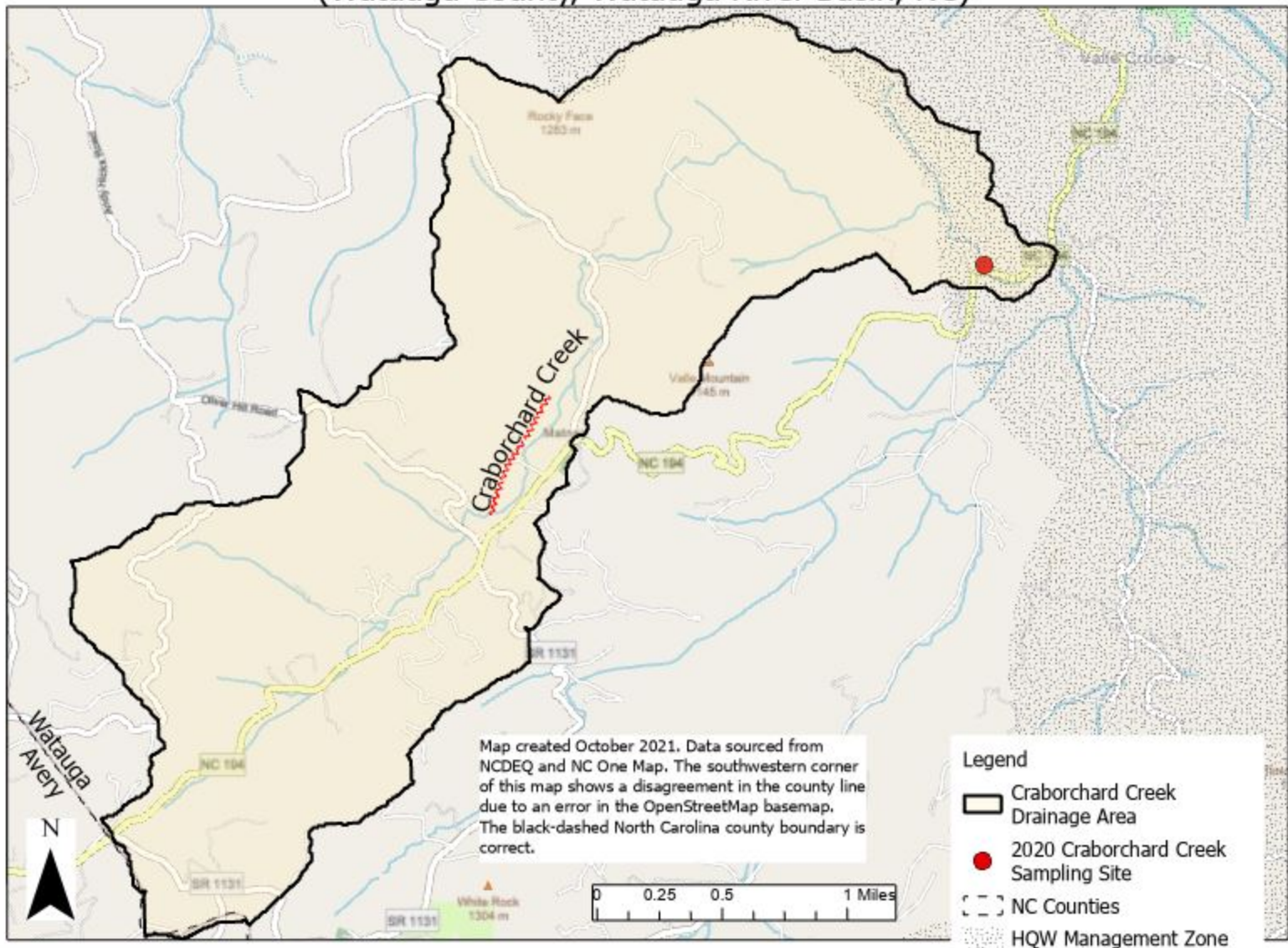
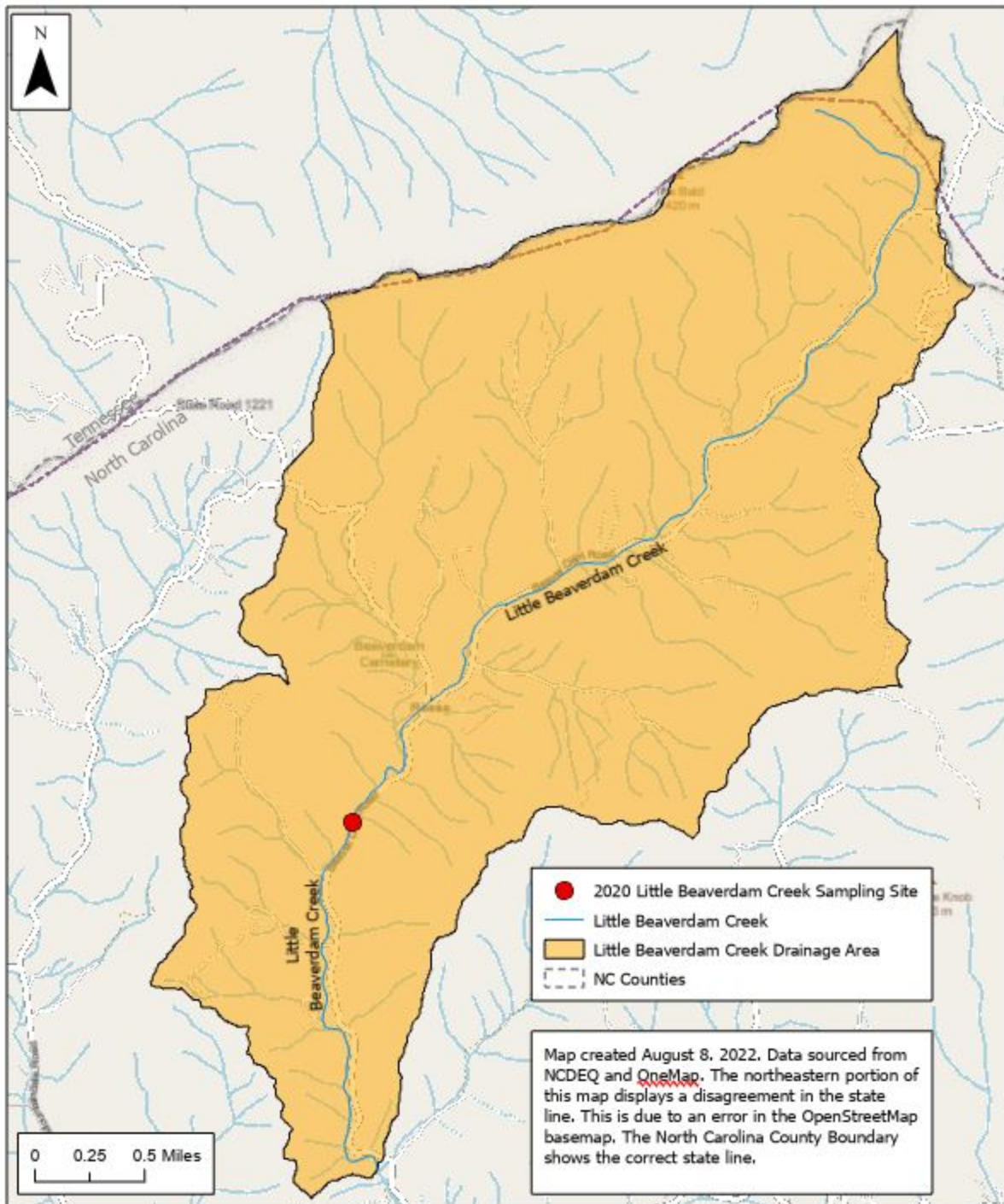


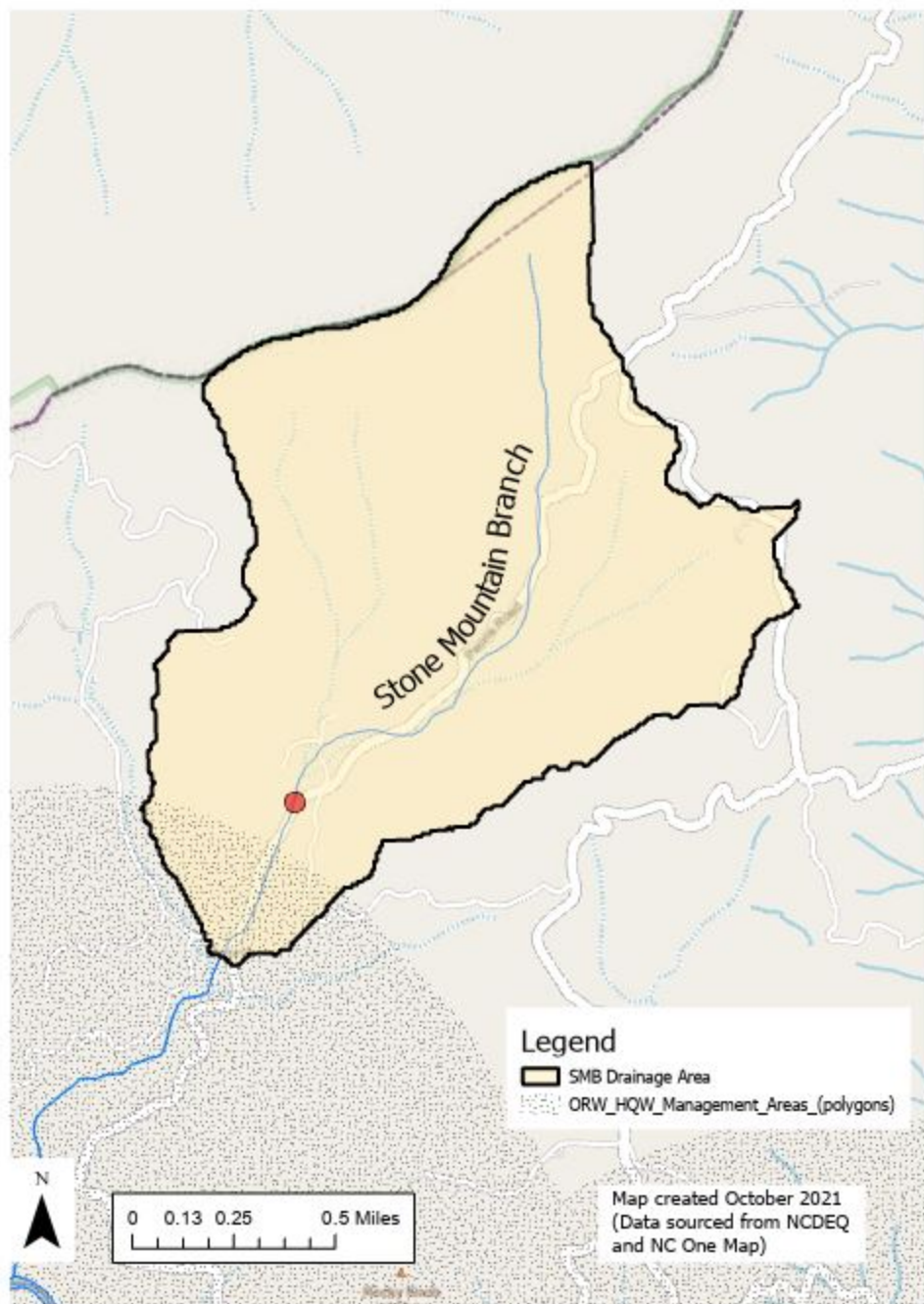
Proposed Craborchard Creek HQW Reclassification (Watauga County, Watauga River Basin, NC)



Proposed Little Beaverdam Creek High Quality Water Classification (Watauga County, Watauga River Basin, NC)



Proposed Stone Mountain Branch HQW Reclassification (Watauga County, Watauga River Basin, NC)



Proposed West Fork Rube Creek HQW Reclassification (Watauga County, Watauga River Basin, NC)

