

## MEMORANDUM

TO: Billy Meyer

FROM: Laura Powers, P.E.

DATE: June 11, 2012

PROJECT: BB&T Site, DSCA ID32-0013  
1103 W Club Blvd  
Durham, NC



SUBJECT: Bi-Weekly Update

W&R has commenced excavation activities at the BB&T site. The following tasks included in the April 12, 2012 RAP were completed prior to this memorandum:

### Preparation Activities

- Security fence installed;
- Wind screen installed on security fence;
- Security signs stating Danger – No Trespassing and Danger – Open Pit in English and Spanish installed;
- Onsite subsurface utilities located;
- Excavation foot print marked out and saw cut;
- Stormwater controls installed on downspouts off the Triangle Family Church structure;
- Placement of straw bails along western fence line;
- Six – Monitoring Wells properly abandoned; and
- Onsite placement of lined and covered roll-off boxes.

### Asphalt and Concrete Removal Activities

- Daily background, work area, and perimeter air monitoring (see field forms included as Attachment A);
- Daily health and safety meetings;
- Partial removal and placement in roll-off containers of surface material cover; i.e. asphalt and concrete (see Figures 1, 2 and 3 for locations of material removal and which roll-off the material was placed in) ;
- Sampling of twelve onsite roll-off containers for total VOCs (see Table 1 and Figures 1, 2 and 3 for laboratory data); and
- Additional sampling of two onsite roll-off containers (13123688 and 13123691), for leachable VOCs due to elevated levels of total VOCs.

### Summary of Work

Asphalt and concrete removal activities were conducted on May 30<sup>th</sup> and 31<sup>st</sup>, 2012. W&R was on-site to conduct outdoor air monitoring during the removal activities. Prior to the start of work, the air monitoring equipment was calibrated on the job site. Background air readings were taken prior to the ignition of site equipment. Air data collected throughout the work day was compared to the background data collected prior to the start of each workday for elevated levels of VOCs. No elevated levels of VOCs were documented during the first week of work. Air monitoring data is provided in Attachment A. A photographic record of the excavation activities is provided in Attachment B.

As of June 4, 2012, six roll-off containers have been filled with asphalt from the parking lot and six roll-off containers have been filled with concrete from the two building pads. During the removal of the asphalt parking lot east of the former dry-cleaning building footprint, W&R encountered an additional concrete pad that is consistent with the location of a former structure that was once located on the property. Aerial photographs of the footprint of this historical structure are included in the Attachment B.

Two representative samples were collected from each roll-off container and submitted to ENCO Laboratories in Cary, NC for analysis of total volatile organic compounds (VOCs) by EPA Method 8260. The nomenclature of our samples is "roll-off box number\_material\_sample number".

PCE was detected below 14 mg/kg in four of the six roll-off containers of asphalt. Although the analytical results indicate PCE is detected in samples collected from all six roll-off containers of asphalt, the PCE concentrations decrease to well below the 14 mg/kg outside the primary source area. Chain of custodies are provided in Attachment C. Based on the results of the analyses, W&R was granted permission to remove those containers (identified as 13123684, 14123683, 13123681, and 13126597RT) as a non-hazardous waste for disposal at a local Subtitle D landfill.

PCE was detected above 14 mg/kg in samples collected from two of the roll-off containers with asphalt from the rear of the former dry-cleaning facility (primary source area). Those samples were collected from containers identified as 13123688 and 13123691. Two additional samples were collected from each of these containers for analysis by the Toxicity Characteristic Leaching Procedure (TCLP) to further support classification of the material for disposal purposes. The TCLP analytical results indicate PCE concentrations in leachate from asphalt in both roll-off containers are less than 0.7 mg/L, and the asphalt has been determined as non-hazardous by the NC DENR Hazardous Waste Section.

Based on the correlation developed between PCE concentrations in the asphalt outside the primary source area, W&R requested permission to begin direct loading and hauling the remaining asphalt on the east side of the former building slab to the landfill without additional testing in a June 1, 2012 Memorandum to the NC DENR Hazardous Waste Section. W&R will containerize and sample a small area of asphalt on the west side of the former building slab for proper disposal.

PCE was not detected above laboratory detection limits in any of the samples collected from

the six roll-off containers of concrete. Also, detectable concentrations of PCE were not found in the concrete building pad at the site (even within the source area). Based on the analytical results, W&R was granted permission to remove the six containers (identified as RB125380RT, RB125397RT, RB12917RT, BKRU026526, and 13123682) as a non-hazardous waste for disposal at a local Subtitle D landfill in the June 1, 2012 memorandum.

W&R requested and was granted permission by the NC DENR Hazardous Waste Section to begin direct loading and hauling the remaining concrete to the Subtitle D landfill without additional testing.

Removal of the roll-off containers began on Friday, June 8, 2012. To date, material from four of the roll-off containers has been transferred for disposal at the Upper Piedmont Regional MSW Landfill in Rougemont, NC. Disposal manifests are provided in Attachment D.

### Upcoming Activities

Excavation activities scheduled for the weeks of June 11<sup>th</sup> and 18<sup>th</sup> include the following:

- Disposal of the remaining eight roll-off containers of asphalt and concrete.
- Containerizing and sampling of brick footing for the two former buildings for proper disposal.
- Removal and disposal of the remaining concrete building pad and asphalt.
- Containerizing and sampling of soils excavated from the primary and secondary source areas.
- Continued outdoor air monitoring during excavation activities at the site.

## TABLES



Table 1: Analytical Data for Excavated Material

DSCA ID No.: 32-0013

Sample ID	Depth [feet bgs]	Material Type	Sampling Date (mm/dd/yy)	1,1,1-Trichloroethane	1,1,1,2-Tetrachloroethane	1,1,2-Trichloroethane	1,1-Dichloroethane	1,1-Dichloroethylene	1,2-Dichloroethane (EDC)	Benzene	Benzo(a)pyrene	Carbon tetrachloride	Chloroform	cis-1,2-Dichloroethylene	Ethylbenzene	Methyl tert-butyl ether (MTBE)	Naphthalene	Tetrachloroethylene	Toluene	trans-1,2-Dichloroethylene	Trichloroethylene	Vinyl chloride	Xylenes (total)	Tetrachloroethylene
				EPA Method 8260 [mg/kg]																				TCLP (mg/L)
13123688_A_A	0-6"	Asphalt	05/30/12	<0.32	<0.26	<0.32	<0.32	<0.38	<0.53	<0.22	NA	<0.28	<0.23	<0.29	<0.26	<0.38	<0.35	<b>44</b>	<0.31	<0.47	<0.41	<0.31	<0.72	<b>0.187</b>
13123688_A_B	0-6"	Asphalt	05/30/12	<0.35	<0.28	<0.35	<0.35	<0.42	<0.58	<0.24	NA	<0.31	<0.25	<0.32	<0.28	<0.48	<0.38	<b>15</b>	<0.34	<0.52	<0.45	<0.34	<0.79	<b>0.28</b>
13123691_A_A	0-6"	Asphalt	05/30/12	<0.14	<0.12	<0.14	<0.14	<0.17	<0.24	<0.098	NA	<0.13	<0.10	<0.13	<0.12	<0.17	<0.16	<b>44</b>	<0.14	<0.21	<0.18	<0.14	<0.32	<b>0.277</b>
13123691_A_B	0-6"	Asphalt	05/30/12	<0.19	<0.16	<0.19	<0.19	<0.23	<0.32	<0.13	NA	<0.17	<0.14	<0.18	<0.16	<0.23	<0.21	<b>24</b>	<0.19	<0.29	<0.25	<0.19	<0.43	<b>0.079</b>
13123684_A_A	0-6"	Asphalt	05/30/12	<0.14	<0.12	<0.14	<0.14	<0.17	<0.24	<0.098	NA	<0.13	<0.10	<0.13	<0.12	<0.17	<0.16	<b>3.2</b>	<0.14	<0.21	<0.18	<0.14	<0.32	NS
13123684_A_B	0-6"	Asphalt	05/30/12	<0.26	<0.21	<0.26	<0.26	<0.31	<0.43	<0.18	NA	<0.23	<0.19	<0.24	<0.21	<0.31	<0.28	<0.29	<0.25	<0.39	<0.34	<0.25	<0.59	NS
13123683_A_A	0-6"	Asphalt	05/30/12	<0.22	<0.18	<0.22	<0.22	<0.26	<0.36	<0.15	NA	<0.19	<0.16	<0.20	<0.18	<0.26	<0.24	<b>6.8</b>	<0.21	<0.32	<0.28	<0.21	<0.41	NS
13123683_A_B	0-6"	Asphalt	05/30/12	<0.29	<0.23	<0.29	<0.29	<0.34	<0.47	<0.20	NA	<0.25	<0.21	<0.26	<0.23	<0.34	<0.31	<b>1.0</b>	<0.28	<0.43	<0.37	<0.28	<0.64	NS
13123681_A_A	0-6"	Asphalt	05/30/12	<0.18	<0.14	<0.18	<0.18	<0.22	<0.29	<0.12	NA	<0.16	<0.13	<0.17	<0.14	<0.22	<0.19	<b>6.6</b>	<0.17	<0.27	<0.23	<0.17	<0.40	NS
13123681_A_B	0-6"	Asphalt	05/30/12	<0.24	<0.19	<0.24	<0.24	<0.28	<0.39	<0.16	NA	<0.21	<0.17	<0.22	<0.19	<0.28	<0.25	<b>2.7</b>	<0.23	<0.35	<0.30	<0.23	<0.53	NS
RB125380RT_C_A	0-6"	Concrete	05/31/12	<0.20	<0.16	<0.20	<0.20	<0.24	<0.33	<0.14	NA	<0.18	<0.15	<0.19	<0.16	<0.24	<0.22	<0.23	<0.20	<0.30	<0.26	<0.20	<0.46	NS
RB125380RT_C_B	0-6"	Concrete	05/31/12	<0.27	<0.22	<0.27	<0.27	<0.33	<0.45	<0.19	NA	<0.24	<0.20	<0.25	<0.22	<0.33	<0.30	<0.31	<0.26	<0.40	<0.35	<0.26	<0.61	NS
RB125397RT_C_A	0-6"	Concrete	05/31/12	<0.29	<0.24	<0.29	<0.29	<0.35	<0.48	<0.20	NA	<0.26	<0.21	<0.27	<0.24	<0.35	<0.32	<0.33	<0.28	<0.44	<0.38	<0.28	<0.66	NS
RB125397RT_C_B	0-6"	Concrete	05/31/12	<0.25	<0.20	<0.25	<0.25	<0.30	<0.41	<0.17	NA	<0.22	<0.18	<0.23	<0.20	<0.30	<0.27	<0.28	<0.24	<0.37	<0.32	<0.24	<0.56	NS
13126597RT_A_A	0-6"	Asphalt	05/31/12	<0.20	<0.16	<0.20	<0.20	<0.24	<0.32	<0.13	NA	<0.17	<0.14	<0.18	<0.16	<0.24	<0.21	<b>1.2</b>	<0.19	<0.29	<0.25	<0.19	<0.44	NS
13126597RT_A_B	0-6"	Asphalt	05/31/12	<0.22	<0.18	<0.22	<0.22	<0.27	<0.37	<0.15	NA	<0.20	<0.16	<0.21	<0.18	<0.27	<0.24	<b>3.5</b>	<0.21	<0.33	<0.29	<0.21	<0.50	NS
RB12917RT_C_A	0-6"	Concrete	05/31/12	<0.16	<0.13	<0.16	<0.16	<0.20	<0.27	<0.11	NA	<0.14	<0.12	<0.15	<0.13	<0.20	<0.18	<0.18	<0.16	<0.24	<0.21	<0.16	<0.36	NS
RB12917RT_C_B	0-6"	Concrete	05/31/12	<0.23	<0.18	<0.23	<0.23	<0.28	<0.38	<0.16	NA	<0.20	<0.17	<0.21	<0.18	<0.28	<0.25	<0.26	<0.22	<0.34	<0.29	<0.22	<0.51	NS
BKRU026526_C_A	0-6"	Concrete	05/31/12	<0.32	<0.26	<0.32	<0.32	<0.38	<0.53	<0.22	NA	<0.28	<0.23	<0.29	<0.26	<0.38	<0.35	<0.36	<0.31	<0.47	<0.41	<0.31	<0.72	NS
BKRU026526_C_B	0-6"	Concrete	05/31/12	<0.19	<0.16	<0.19	<0.19	<0.23	<0.32	<0.13	NA	<0.17	<0.14	<0.18	<0.16	<0.23	<0.21	<0.21	<0.19	<0.29	<0.25	<0.19	<0.43	NS
13123682_C_A	0-6"	Concrete	05/31/12	<0.25	<0.20	<0.25	<0.25	<0.30	<0.41	<0.17	NA	<0.22	<0.18	<0.23	<0.20	<0.30	<0.27	<0.28	<0.24	<0.37	<0.32	<0.24	<0.56	NS
13123682_C_B	0-6"	Concrete	05/31/12	<0.23	<0.18	<0.23	<0.23	<0.28	<0.38	<0.16	NA	<0.20	<0.17	<0.21	<0.18	<0.28	<0.25	<0.26	<0.22	<0.34	<0.29	<0.22	<0.51	NS
BKRU025989_C_A	0-6"	Concrete	05/31/12	<0.28	<0.22	<0.28	<0.28	<0.33	<0.45	<0.19	NA	<0.24	<0.20	<0.25	<0.22	<0.33	<0.30	<0.31	<0.27	<0.41	<0.35	<0.27	<0.62	NS
BKRU025989_C_B	0-6"	Concrete	05/31/12	<0.31	<0.25	<0.31	<0.31	<0.37	<0.51	<0.21	NA	<0.27	<0.22	<0.29	<0.25	<0.37	<0.33	<0.35	<0.30	<0.46	<0.40	<0.30	<0.69	NS


Note:  
NS - Not Sampled

## FIGURES

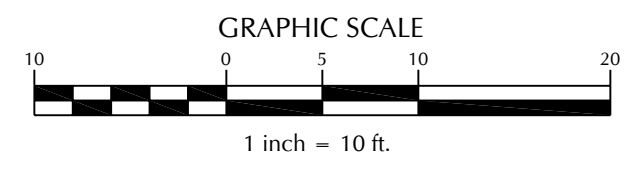
FORMER BB&T BUILDING SLAB

EXTENT OF EXCAVATION

### LEGEND

-  AREA OF EXCAVATION PLACED IN A SINGLE ROLL-OFF CONTAINER
- 13123681\_A\_A ROLL-OFF # \_ MATERIAL \_ SAMPLE (A OR B)
- 3.5 PCE RESULTS IN mg/kg

NOTES:  
1.) BDL = BELOW LABORATORY DETECTION LIMITS



13123683\_A\_A: 6.8

13123683\_A\_B: 1.0

13123681\_A\_A: 6.6

13123681\_A\_B: 2.7

13123688\_A\_A: 44

13123688\_A\_B: 15

13123691\_A\_A: 44

13123691\_A\_B: 24

13123684\_A\_A: 3.2

13123684\_A\_B: BDL

Revisions			
No.	Description	Date	By

FORMER BB&T BUILDING SLAB

EXTENT OF EXCAVATION

13126597\_A\_A: 1.2

13126597\_A\_B: 3.5

RB12917RT\_C\_A: BDL

RB12917RT\_C\_B: BDL

RB125397RT\_C\_A: BDL

RB125397RT\_C\_B: BDL

RB125380RT\_C\_A: BDL

RB125380RT\_C\_B: BDL

BKRU025989\_C\_A: BDL

BKRU025989\_C\_B: BDL


BKRU026526\_C\_A: BDL

BKRU026526\_C\_B: BDL

13123682\_C\_A: BDL

13123682\_C\_B: BDL

### LEGEND

 AREA OF EXCAVATION PLACED IN A SINGLE ROLL-OFF CONTAINER

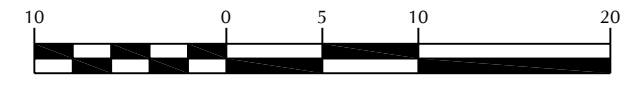
13123681\_A\_A ROLL-OFF # \_ MATERIAL \_ SAMPLE (A OR B)

 PCE RESULTS IN mg/kg

NOTES:

1.) BDL = BELOW LABORATORY DETECTION LIMITS

#### GRAPHIC SCALE



1 inch = 10 ft.

Revisions			
No.	Description	Date	By

ASPHALT TO BE  
CONTAINERIZED AND  
SAMPLED

FORMER BB&T BUILDING SLAB

EXTENT OF EXCAVATION

13126597\_A\_A: 1.2

13126597\_A\_B: 3.5

13123683\_A\_A: 6.8

13123683\_A\_B: 1.0

13123681\_A\_A: 6.6

13123681\_A\_B: 2.7

AREA OF  
ASPHALT  
PROPOSED  
FOR DIRECT  
LOAD AND  
HAUL

13123688\_A\_A: 44 (0.187 mg/L)

13123688\_A\_B: 15 (0.280 mg/L)


13123691\_A\_A: 44 (0.277 mg/L)

13123691\_A\_B: 24 (0.079 mg/L)

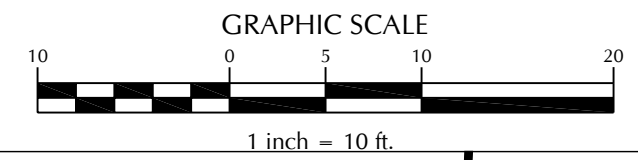
13123684\_A\_A: 3.2

13123684\_A\_B: BDL

### LEGEND

-  AREA OF EXCAVATION PLACED IN A SINGLE ROLL-OFF CONTAINER
- 13123681\_A\_A ROLL-OFF # \_ MATERIAL \_ SAMPLE (A OR B)
- 3.5 PCE RESULTS IN mg/kg FROM 8260 ANALYSIS  
(0.27 mg/L) PCE RESULTS FROM TCLP ANALYSIS

NOTES: 1.) BDL = BELOW LABORATORY DETECTION LIMITS



Revisions			
No.	Description	Date	By

## ATTACHMENTS

**ATTACHMENT A**

**Site Air Monitoring Data  
May 30, 2012 through May 31, 2012**





SITE AIR MONITORING FORM  
 FORMER BB&T  
 1103 WEST CLUB BLVD  
 DURHAM, NORTH CAROLINA  
 DSCA ID NO. 32-0013  
 W&R PROJECT NO. 02060496.32  
 FIELD PERSONNEL:

MONITORING LOCATION	DATE	TIME	TVA - FID (ppm)	TVA - PID (ppm)	MINRAE PID (ppm)	PCE by DRAGGER CMS (ppm)	WIND SPEED & DIRECTION (MPH)	HUMIDITY (%RH)	TEMPERATURE (°F)	COMMENTS
NE CORNER	5/30/12	1330	0.89	6.19	0.0		NNE 14 mph	79%	70°	
NW CORNER			0.21	6.01	0.0					
SW CORNER			0.26	5.34	0.0					
SE CORNER			0.47	4.95	0.0					
WORK AREA			0.88	5.06	0.0					
			<del>0.88</del>							
NE CORNER	5/30/12	1345	0.01	4.71	0.0		NNE 14 mph	76%	77°	
NW CORNER			0.17	3.36	0.0					
SW CORNER			0.10	4.24	0.0					
SE CORNER			0.14	4.68	0.0					
WORK AREA			0.03	4.17	0.0					
east			0.98	5.91	0.0					From truckload ~ 2 ft from east
NE CORNER	5/30/12	1400	0.04	3.47	0.0		ENE 17 mph	70%	78°	
NW CORNER			0.12	3.93	0.0					
SW CORNER			0.01	3.58	0.0					
SE CORNER			0.45	4.87	0.0					
WORK AREA			0.04	3.48	0.0					
Asphalt roll off	13123691		1.34	12.14	0.0					
NE CORNER	5/30/12	1415	0.01	3.06	0.0					
NW CORNER			0.04	3.19	0.0					
SW CORNER			0.09	3.82	0.0					
SE CORNER			0.63	3.93	0.0					
WORK AREA			0.46	3.60	0.0					

SITE AIR MONITORING FORM  
 FORMER BB&T  
 1103 WEST CLUB BLVD  
 DURHAM, NORTH CAROLINA  
 DSCA ID NO. 32-0013  
 W&R PROJECT NO. 02060496.32  
 FIELD PERSONNEL:

MONITORING LOCATION	DATE	TIME	TVA - FID (ppm)	TVA - PID (ppm)	MINIRAE PID (ppm)	PCE by DRAGGER CMS (ppm)	WIND SPEED & DIRECTION (MPH)	HUMIDITY (%RH)	TEMPERATURE (°F)	COMMENTS
NE CORNER	5/30/12	1430	0.08	3.14	0.0					
NW CORNER			0.02	2.84	0.0					
SW CORNER			-0.14	2.90	0.0					
SE CORNER			0.39	4.64	0.0					
WORK AREA			0.14	2.81	0.0					
NE CORNER	5/30/12	1445	0.04	2.77	0.0		ENE 17mph	69%	80°	
NW CORNER			0.08	3.19	0.0					
SW CORNER			0.12	3.26	0.0					
SE CORNER			0.28	3.18	0.0					
WORK AREA			0.26	3.89	0.0					
exhaust truck hse			0.98	4.96						
NE CORNER	5/30/12	1500	0.01	2.81	0.0					
NW CORNER			0.14	3.85	0.0					
SW CORNER			0.15	2.92	0.0					
SE CORNER			0.54	3.65	0.0					
WORK AREA			0.45	3.60	0.0					
NE CORNER	5/30/12	1515	0.04	3.14	0.0		NNW 18mph	58%	80°	
NW CORNER			0.01	2.98	0.0					
SW CORNER			0.15	3.18	0.0					
SE CORNER			0.54	4.14	0.0					
WORK AREA			0.38	3.74	0.0					
Airphat collect		13123694	0.32	3.91	0.0					





MONITORING LOCATION	DATE	TIME	TVA - FID (ppm)	TVA - PID (ppm)	MINIRAE PID (ppm)	PCE by DRAGGER CMS (ppm)	WIND SPEED & DIRECTION (MPH)	HUMIDITY (%RH)	TEMPERATURE (°F)	COMMENTS
NE CORNER	5/31/12	745	1.5	0.0	0.0		0.0	68	74	Background equipment calibrated prior to readings
NW CORNER			0.0	2.1	0.0		Very light			
SW CORNER			0.0	1.8	0.0		Breeze from			
SE CORNER			0.0	1.4	0.0		west			
WORK AREA			0.0	1.5	0.0					
NE CORNER	5/31/12	845	0.0	0.83	0.0		W 9 Gust	60	78	Equipment stable
NW CORNER			0.0	1.18	0.0					<del>stable</del>
SW CORNER			0.0	1.25	0.0					
SE CORNER			0.0	1.29	0.0					
WORK AREA			0.0	1.38	0.0					
Exhaust loader			0.89	4.64	8.1					≈ 1 ft from pipe
NE CORNER		900	0.0	0.14	0.0					
NW CORNER			0.0	0.87	0.0					
SW CORNER			0.0	0.81	0.0					
SE CORNER			0.0	1.11	0.0					
WORK AREA			0.0	0.74	0.0					
NE CORNER		915	0.0	0.61	0.0		WNW 9	58	77	
NW CORNER			0.11	1.04	0.0		Gust			
SW CORNER			0.0	0.63	0.0					
SE CORNER			0.0	0.55	0.0					
WORK AREA			0.0	0.81	0.0					
SE corner of building (4 ft spid)			0.0	0.94	0.0					

SITE AIR MONITORING FORM  
 FORMER BB&T  
 1103 WEST CLUB BLVD  
 DURHAM, NORTH CAROLINA  
 DSCA ID NO. 32-0013  
 W&R PROJECT NO. 02060498.32  
 FIELD PERSONNEL:

MONITORING LOCATION	DATE	TIME	TVA - FID (ppm)	TVA - PID (ppm)	MINIRAE PID (ppm)	PCE by DRAGGER CMS (ppm)	WIND SPEED & DIRECTION (MPH)	HUMIDITY (%RH)	TEMPERATURE (°F)	COMMENTS
NE CORNER	5/31/12	930	0.0	0.39	0.0					
NW CORNER			0.02	0.85	0.0					
SW CORNER			0.0	0.88	0.0					
SE CORNER			0.0	0.49	0.0					
WORK AREA			0.0	0.85	0.0					
SE corner building (not spot)			0.0	0.94	0.0					
NE CORNER	5/31/12	945	0.0	0.61	0.0		NNW 9 Gust	54	80	
NW CORNER			0.0	0.63	0.0					
SW CORNER			0.0							
SE CORNER			0.0	0.64	0.0					
WORK AREA			0.0	0.67	0.0					
NE CORNER	5/31/12	1000	0.0	0.54	0.0		NNW 9 Gust	51	81	
NW CORNER			0.0	0.68	0.0					
SW CORNER			0.0	0.26	0.0					
SE CORNER			0.0	0.61	0.0					
WORK AREA			0.0	0.55	0.0					
not spot			0.0	0.64	0.0					
NE CORNER	5/31/12	1015	0.0	0.14	0.0					
NW CORNER			0.0	0.0	0.0					
SW CORNER			0.0	0.14	0.0					
SE CORNER			0.0	0.17	0.0					
WORK AREA			0.0	0.36	0.0					
exhaust hood			0.44	3.68	4.71					

SITE AIR MONITORING FORM  
 FORMER BB&T  
 1103 WEST CLUB BLVD  
 DURHAM, NORTH CAROLINA  
 DSCA ID NO. 32-0013  
 W&R PROJECT NO. 02060496.32  
 FIELD PERSONNEL:

MONITORING LOCATION	DATE	TIME	TVA - FID (ppm)	TVA - PID (ppm)	MINIRAE PID (ppm)	PCE by DRAGGER CMS (ppm)	WIND SPEED & DIRECTION (MPH)	HUMIDITY (%RH)	TEMPERATURE (°F)	COMMENTS
NE CORNER	5/31/12	1030	0.0	0.01	0.0		NNW 9	57	82	
NW CORNER			0.0	0.32	0.0					
SW CORNER			0.0	0.60	0.0					
SE CORNER			0.0	0.33	0.0					
WORK AREA			0.0	0.50	0.0					
NE CORNER	5/31/12	1045	0.07	0.51	0.0		NNW 9	51	83	
NW CORNER			0.0	0.38	0.0		Gust			
SW CORNER			0.0	0.37	0.0					
SE CORNER			0.0	0.31	0.0					
WORK AREA			0.12	0.73	0.0					
Exhaust track			1.34	6.78	8.91					
NE CORNER	5/31/12	1100	0.0	0.20	0.0		NNW 9 Gust	48	84	
NW CORNER			0.0	0.34	0.0					
SW CORNER			0.0	0.21	0.0					
SE CORNER			0.0	0.36	0.0					
WORK AREA			0.0	0.39	0.0					
NE CORNER	5/31/12	1115	0.0	0.28	0.0					
NW CORNER			0.0	0.22	0.0					
SW CORNER			0.0	0.34	0.0					
SE CORNER			0.0	0.25	0.0					
WORK AREA			0.04	1.11	0.0					

SITE AIR MONITORING FORM  
 FORMER BB&T  
 1103 WEST CLUB BLVD  
 DURHAM, NORTH CAROLINA  
 DSCA ID NO. 32-0013  
 W&R PROJECT NO. 02060496.32  
 FIELD PERSONNEL:

MONITORING LOCATION	DATE	TIME	TVA - FID (ppm)	TVA - PID (ppm)	MINIRAE PID (ppm)	PCE by DRAGGER CMS (ppm)	WIND SPEED & DIRECTION (MPH)	HUMIDITY (%RH)	TEMPERATURE (°F)	COMMENTS
NE CORNER	5/31/12	1130	0.0	0.06	0.0		NNW 9	46	86°	
NW CORNER			0.0	0.18	0.0					
SW CORNER			0.0	0.10	0.0					
SE CORNER			0.0	0.06	0.0					
WORK AREA			0.0	0.41	0.0					
NE CORNER	5/31/12	1145	0.0	0.01	0.0		NNW 9	45	86	
NW CORNER			0.16	0.8	0.0					
SW CORNER			0.19	1.03	0.0					
SE CORNER			0.25	1.39	0.0					
WORK AREA			0.31	1.63	0.0					
Elkhart loader			0.91	3.45	4.64					
NE CORNER	5/31/12	1200	0.0	0.41	0.0					
NW CORNER			0.0	0.0	0.0					
SW CORNER			0.0	0.0	0.0					
SE CORNER			0.14	0.88	0.0					
WORK AREA			0.19	1.38	0.0					
NE CORNER	5/31/12	1215	0.0	0.14	0.0		NNW 9	41	88°	
NW CORNER			0.0	0.24	0.0					
SW CORNER			0.0	0.17	0.0					
SE CORNER			0.0	0.08	0.0					
WORK AREA			0.08	0.63	0.0					

SITE AIR MONITORING FORM  
 FORMER BB&T  
 1103 WEST CLUB BLVD  
 DURHAM, NORTH CAROLINA  
 DSCA ID NO. 32-0013  
 W&R PROJECT NO. 02060498.32  
 FIELD PERSONNEL:

MONITORING LOCATION	DATE	TIME	TVA - FID (ppm)	TVA - PID (ppm)	MINIRAE PID (ppm)	PCE by DRAGGER CMS (ppm)	WIND SPEED & DIRECTION (MPH)	HUMIDITY (%RH)	TEMPERATURE (°F)	COMMENTS
NE CORNER	5/31/12	1230	0.0	0.34	0.0		NNW 9	41	88°	
NW CORNER			0.0	0.66	0.0					
SW CORNER			0.0	0.38	0.0					
SE CORNER			0.0	0.64	0.0					
WORK AREA			0.0	0.98	0.0					
NE CORNER	5/31/12	1245	0.0	0.14	0.0		NNW 9	40	88°	
NW CORNER			0.0	0.38	0.0					
SW CORNER			0.0	0.31	0.0					
SE CORNER			0.0	0.88	0.0					
WORK AREA			0.0	1.16	0.0					
NE CORNER	5/31/12	1330	0.0	0.23	0.0		NNW 9	35	89°	
NW CORNER			0.0	0.36	0.0					
SW CORNER			0.0	0.14	0.0					
SE CORNER			0.0	0.33	0.0					
WORK AREA			0.0	0.64	0.0					
NE CORNER	5/31/12	1400	0.0	0.48	0.0					
NW CORNER			0.0	0.12	0.0					
SW CORNER			0.0	0.18	0.0					
SE CORNER			0.0	0.36	0.0					
WORK AREA			0.0	0.47	0.0					





**ATTACHMENT B**

**Photographic Record  
May 29, 2012 through June 1, 2012**

**Photographic Record**

Project Name: BB&T Site, 1103 West Club Blvd., Durham, NC

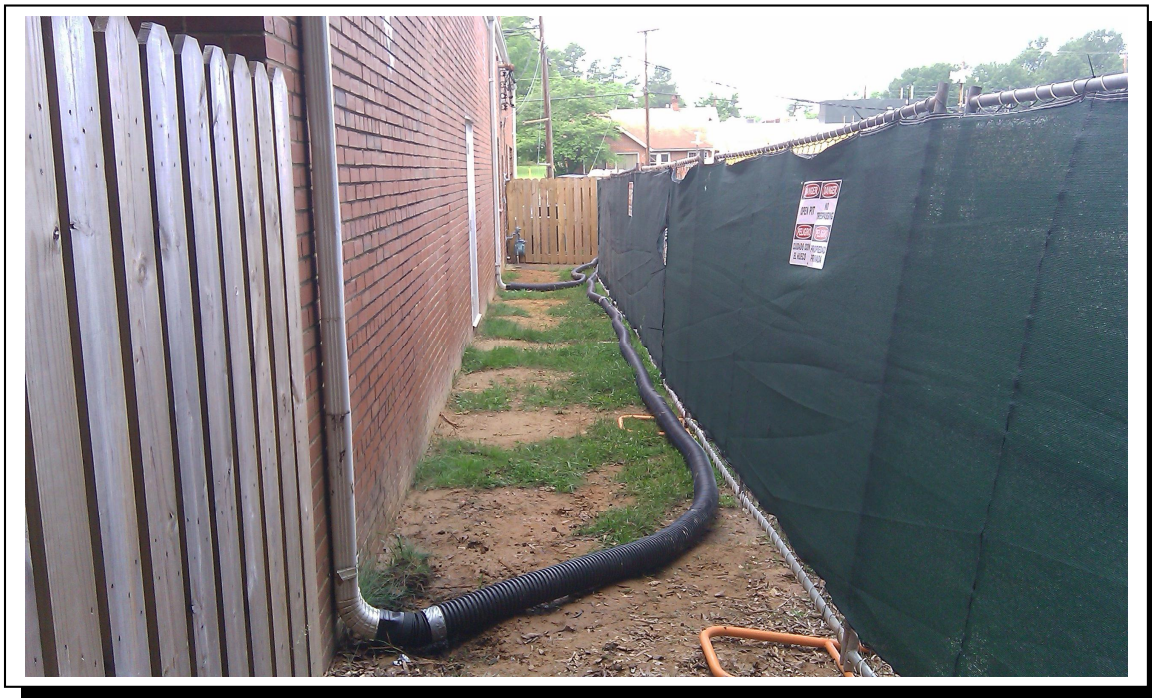
DSCA ID # 32-0013

Frame No. 1



Description: View of site perimeter along West Club Boulevard.

Frame No. 2



Description: View of stormwater control features off Triangle Family Church.



**Photographic Record**

Project Name: BB&T Site, 1103 West Club Blvd., Durham, NC

DSCA ID # 32-0013

Frame No. 3



Description: View of removed asphalt to fill roll-off container #13123688.

Frame No. 4



Description: View of removed asphalt to fill roll-off container #13123691.



**Photographic Record**

Project Name: BB&T Site, 1103 West Club Blvd., Durham, NC

DSCA ID # 32-0013

Frame No. 5



Description: View of removed asphalt to fill roll-off container #13123683.

Frame No. 6



Description: View of removed asphalt to fill roll-off container #13123684.



**Photographic Record**

Project Name: BB&T Site, 1103 West Club Blvd., Durham, NC

DSCA ID # 32-0013

Frame No. 7



Description: View of removed asphalt to fill roll-off container #13123681.

Frame No. 8



Description: View of initial excavation of the southwestern corner concrete building slab on 5-31-12.



**Photographic Record**

Project Name: BB&T Site, 1103 West Club Blvd., Durham, NC

DSCA ID # 32-0013

Frame No. 9



Description: View of excavated area to be placed in roll-off container BKRU026526.

Frame No. 10



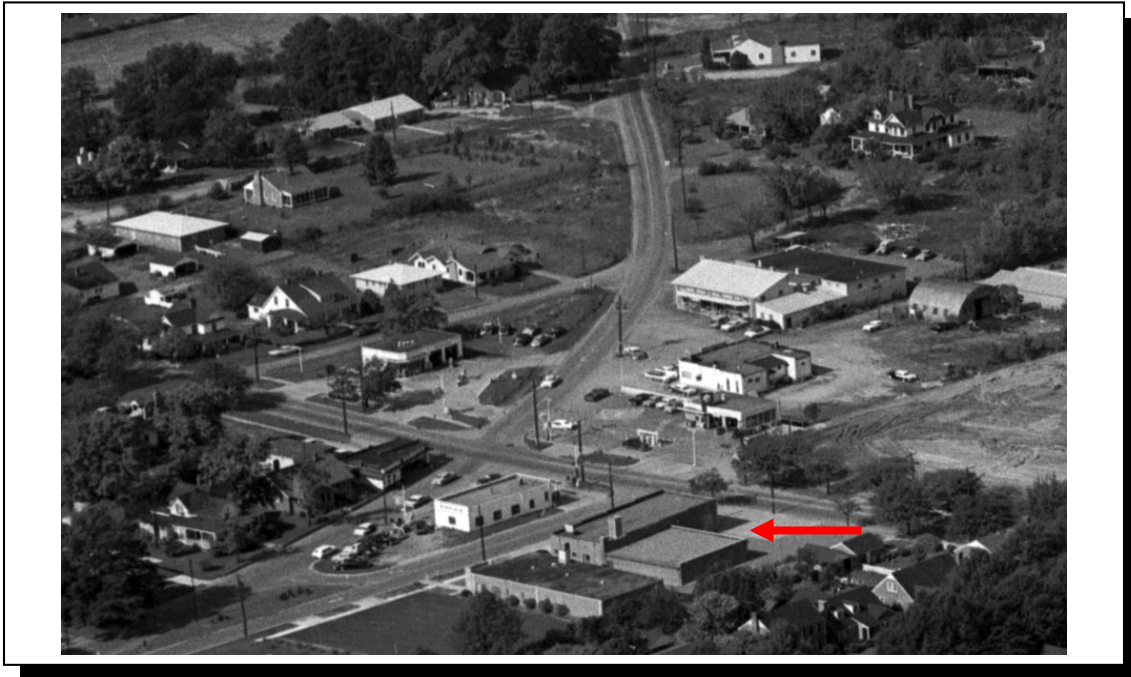
Description: Typical view of covered roll-offs onsite following placement of surface material into each roll-off.

**Photographic Record**

Project Name: BB&T Site, 1103 West Club Blvd., Durham, NC

DSCA ID # 32-0013

Frame No. 11



Description: Historical photograph showing former on-site building with eastern addition.

Frame No. 12



Description: Historical aerial showing subject property and former on-site building with an eastern addition.



**ATTACHMENT C**

**Chain of Custodies**



**ENVIRONMENTAL CONSERVATION LABORATORIES CHAIN-OF-CUSTODY RECORD**  
 10775 Central Port Dr.  
 Orlando, FL 32824  
 (407) 826-5314 Fax (407) 850-6945

www.encolabs.com

Page 1 of 1

Client Name: **Withers & Ravenel Environmental (W1009)**  
 Address: **111 MacKenan Drive**  
 City/ST/Zip: **Cary, NC 27511**  
 Tel: **(919) 469-3340** Fax: **(919) 535-4545**  
 Reporter Name: **Laura Powers**  
 Billing Contact: **Laura Powers**  
 Site Location / Time Zone: \_\_\_\_\_

Project Number: **[none]**  
 Project Name/Desc: **BB&T**  
 PO # / Billing Info: \_\_\_\_\_  
 Reporting Contact: **Laura Powers**  
 Billing Contact: **Laura Powers**  
 Site Location / Time Zone: \_\_\_\_\_

Item #	Sample ID (Field Identification)	Collection Date	Collection Time	Comp / Grab	Matrix (see codes)	Total # of Containers	Preservation (See Codes) (Combine as necessary)	Requested Analyses	Requested Turnaround Times
	RB125380RT-L-A	5/31	1000		SO	2	8260B, 8260B Extended	% Solids	Standard
	RB125380RT-L-B		1001		SO	2			<input checked="" type="checkbox"/> Expedited
	RB12537HT-L-A		1046		SO	2			Due 6/1/12
	RB12537HT-L-B		1041		SO	2			
	1312657T-A-A		1100		SO	2			
	1312657T-A-B		1101		SO	2			
	<del>TP Blank</del> RB1241RT-L-A		1215		WA	2			
	<del>TP Blank</del> RB1241RT-L-B		1216		WA	2			
	<del>TP Blank</del>				WA	2			
	<del>TP Blank</del>				WA	2			
	<del>TP Blank</del>				WA	2			
	TP Blank 5/31/12					4			

Sample Kit Prepared By: \_\_\_\_\_ Date/Time: \_\_\_\_\_  
 Relinquished By: \_\_\_\_\_ Date/Time: \_\_\_\_\_  
 Relinquished By: \_\_\_\_\_ Date/Time: \_\_\_\_\_  
 Relinquished By: \_\_\_\_\_ Date/Time: \_\_\_\_\_  
 Cooler #'s & Temps on Receipt: \_\_\_\_\_

Received By: **Rachel Jones** Date/Time: **5/31/12 12:48**  
 Received By: \_\_\_\_\_ Date/Time: \_\_\_\_\_  
 Received By: \_\_\_\_\_ Date/Time: \_\_\_\_\_

Condition Upon Receipt:  Acceptable  Unacceptable

Matrix: **GW**-Groundwater **SO**-Soil **DW**-Drinking Water **SE**-Sediment **SW**-Surface Water **WW**-Wastewater **A-Air** **O-Other** (detail in comments)  
 Preservation: **H-He** **HCl** **H-HNO3** **S-H2SO4** **NO-NaOH** **O-Other** (detail in comments)  
 Note: All samples submitted to ENCO Labs are in accordance with the terms and conditions listed on the reverse of this form, unless prior written agreements exist.



www.encolabs.com



**ENVIRONMENTAL CONSERVATION LABORATORIES CHAIN-OF-CUSTODY RECORD**

10775 Central Port Dr.  
Orlando, FL 32824  
(407) 825-5314 Fax (407) 850-8945

102-A Woodwinds Industrial Ct.  
Cary, NC 27511  
(919) 467-3090 Fax (919) 467-3515

4810 Executive Park Court, Suite 111  
Jacksonville, FL 32216-6069  
(904) 296-2007 Fax (904) 296-6210

www.encolabs.com

Page 1 of 1

Client Name <b>Withers &amp; Ravenel Environmental (W1009)</b>	Project Number <b>None</b>
Address <b>111 MacKenan Drive</b>	Project Name/Desc <b>BB&amp;T</b>
City/ST/Zip <b>Cary, NC 27511</b>	PO # / Billing Info
Tel <b>(919) 469-3340</b>	Reporting Contact <b>Laura Powers</b>
Fax <b>(919) 535-4545</b>	Billing Contact <b>Laura Powers</b>
Sampler(s) Name, Affiliation (Print)	Site Location / Time Zone
Sampler(s) Signature	

Item #	Sample ID (Field Identification)	Collection Date	Collection Time	Comp. / Grab	Matrix (see codes)	Total # of Containers	% Solids	8260B, 8260B Extended	Requested Analyses	Preservation (See Codes) (Combine as necessary)	Lab Workorder	Requested Turnaround Times
	13123688-A-A	5/30/12	1340		SO	2	X	X			C205910	Standard
	13123688-A-B		1341		SO	2	X	X				Expedited
	13123691-A-A		1450		SO	2	X	X				6/1/12
	13123691-A-B		1451		SO	2	X	X				
	13123684-A-A		1508		SO	2	X	X				
	13123684-A-B		1509		SO	2	X	X				
	13123683-A-A		1550		SO	2	X	X				
	13123683-A-B		1551		SO	2	X	X				
	13123681-A-A		1600		SO	2	X	X				
	13123681-A-B		1601		SO	2	X	X				

Sample Kit Prepared By	Date/Time	Relinquished By	Date/Time	Received By	Date/Time
			5/30/12		5/30/12
Comments/Special Reporting Requirements				Received By	Date/Time
				Received By	Date/Time
Cooler #'s & Temps on Receipt	C-417		C-338 - 1.8c		Condition Upon Receipt
					Acceptable

Matrix: GW-Groundwater SO-Soil DW-Drinking Water SE-Sediment SW-Surface Water WW-Wastewater A-Air O-Other (detail in comments)  
 Preservation: H-HCl N-HNO3 S-H2SO4 NO-NaOH O-Other (detail in comments)  
 Note: All samples submitted to ENCO Labs are in accordance with the terms and conditions listed on the reverse of this form, unless prior written agreements exist.



www.encolabs.com





**ENVIRONMENTAL CONSERVATION LABORATORIES CHAIN-OF-CUSTODY RECORD**  
 10775 Central Port Dr.  
 Orlando, FL 32824  
 (407) 826-5314 Fax (407) 850-6945

www.encolabs.com  
 Page 1 of 1

102-A Woodwings Industrial Ct.  
 Cary, NC 27511  
 (919) 467-3090 Fax (919) 467-3515

Client Name: **Withers & Ravenel Environmental (W0009)**  
 Address: **111 MacKenan Drive**  
 City/ST/Zip: **Cary, NC 27511**  
 Tel: **(919) 469-3340** Fax: **(919) 535-4545**  
 Project Number: **[none]**  
 Project Name/Disc: **BB&T**  
 PO # / Billing Info:  
 Reporting Contact: **Laura Powers**  
 Billing Contact: **Laura Powers**  
 Site Location / Time Zone:

Requested Analyses:  
 8260B, 8260B Extended  
 % Solids  
 Preservation (See Codes) (Combine as necessary)

Requested Turnaround Times  
 Note: Rush requests subject to acceptance by the facility  
 Standard  
 X Expedited  
 Due **6/1/12**  
 Lab Workorder: **2266053**  
**C205910**

Item #	Sample ID (Field Identification)	Collection Date	Collection Time	Comp./Grab	Matrix (see codes)	Total # of Containers	Preservation (See Codes) (Combine as necessary)	Sample Comments
	BKRU026526-C-A	5/31/12	1000	1250	SO	2	X	Rush
	BKRU026526-C-B		1001	1251	SO	2	X	
	13123682-C-A		1000	1430	SO	2	X	
	13123682-C-B		1001	1431	SO	2	X	
	BKRU025981-C-A		1100	1500	SO	2	X	
	BKRU025981-C-B		1101	1501	SO	2	X	
	Trip Blank 5/31/12		1102		SO	2	X	
					SO	2	X	
					SO	2	X	
					SO	2	X	

Sample Kit Prepared By: *[Signature]* Date/Time: **5/31/12 1535**  
 Comments/Special Reporting Requirements: **19c**  
 Relinquished By: *[Signature]* Date/Time: **5/31/12**  
 Relinquished By: *[Signature]* Date/Time: **5/31/12 1535**  
 Relinquished By: *[Signature]* Date/Time: **5/31/12 1535**  
 Cooler #'s & Temps on Receipt: **Blue 19c**  
 Condition Upon Receipt:  Acceptable  Unacceptable

Matrix: GW-Groundwater SO-Soil DW-Drinking Water SE-Sediment SW-Surface Water WW-Wastewater A-Air O-Other (detail in comments)  
 Preservation: H-HCl N-HNO3 S-H2SO4 NO-NaOH O-Other (detail in comments)  
 Note: All samples submitted to ENCO Labs are in accordance with the terms and conditions listed on the reverse of this form, unless prior written agreements exist.



www.encolabs.com



www.encolabs.com

www.encolabs.com

Page 1 of 1

ENVIRONMENTAL CONSERVATION LABORATORIES CHAIN-OF-CUSTODY RECORD

102-A Woodlands Industrial Ct.  
Cary, NC 27511  
(919) 467-3090 Fax (919) 467-3515

4810 Executive Park Court, Suite 211  
Jacksonville, FL 32216-0069  
(904) 298-3007 Fax (904) 298-0210

10775 Central Post Dr.  
Orlando, FL 32824  
(407) 828-5314 Fax (407) 850-6945



Client Name: Watershed Renewal  
 Address: 1111 McKee Dr  
 City/State/Zip: Cary NC  
 Tel: \_\_\_\_\_ Fax: \_\_\_\_\_  
 Reporting Contact: L. Powers  
 Billing Contact: \_\_\_\_\_  
 Site Location / Time Zone: Durham NC

Project Number: 0206049632  
 Project Name/Desc: BBOT  
 PO # / Billing Info: \_\_\_\_\_

Requested Analysis: \_\_\_\_\_

Requested Turnaround Times: \_\_\_\_\_  
 Note: Rush requests subject to acceptance by the facility  
 Standard \_\_\_\_\_  
 Expedited  6/12/12

Lab Workorder: C206092

Item #	Sample ID (Field Identification)	Collection Date	Collection Time	Comp / Grab	Matrix (see codes)	Total # of Containers	Preservation (See Codes) (Combine as necessary)	Sample Comments
131236002-A-A	6/1/12	1540	Comp	Solid	1	XXXX		
131236002-A-B	↓	1541	↓	↓	1	XXXX		
131236001-A-A	↓	1550	↓	↓	1	XXXX		
131236001-A-B	↓	1551	↓	↓	1	XXXX		

Relinquished By: \_\_\_\_\_ Date/Time: \_\_\_\_\_  
 Relinquished By: \_\_\_\_\_ Date/Time: 6/12/12 1645  
 Relinquished By: \_\_\_\_\_ Date/Time: \_\_\_\_\_

Received By: \_\_\_\_\_ Date/Time: \_\_\_\_\_  
 Received By: \_\_\_\_\_ Date/Time: \_\_\_\_\_  
 Received By: \_\_\_\_\_ Date/Time: \_\_\_\_\_

Condition Upon Receipt:  Acceptable  Unacceptable

Cooler # & Temps on Receipt: 1.0°C

Matrix: GW-Groundwater SO Soil DW Drinking Water SE Sediment SW-Surface Water WW-Wastewater A-Air O-Other (detail in comments)  
 Preservation: L-Ice H-HCl H-HNO3 S-H2SO4 NO-NO2H O-Other (detail in comments)

Note: All samples submitted to ENCO Labs are in accordance with the terms and conditions listed on the reverse of this form, unless prior written agreements exist.

**ATTACHMENT D**

**Non-Hazardous Waste Manifest  
June 8, 2012**





Requested Disposal Facility: 3038 Upper Piedmont Regional LF NC

Waste Profile #

Saveable fill in form. Restricted printing until all required (yellow) fields are completed.

Sales Rep #.

**I. Generator Information**

Generator Name: Petitioner for DSCA Site #32-0013			
Generator Site Address: 1103 West Club Blvd			
City: Durham	County: Durham	State: North Carolina	Zip: 27701
State ID/Reg No: NCR000142	State Approval/Waste Code: (if applicable)		NAICS # :
Generator Mailing Address (if different): 1646 Mail Service Center			
City: Raleigh	County: Wake	State: North Carolina	Zip: 27699-1646
Generator Contact Name: Billy Meyer		Email: billy.meyer@ncdenr.gov	
Phone Number: (919) 707-8366	Ext:	Fax Number: (919) 707-8366	

**IIa. Transporter Information**

Transporter Name: Evo Corporation		Contact Name: Tony Disher	
Transporter Address: 1703 Vargrave Street			
City: Winston-Salem	County: Forsyth	State: North Carolina	Zip: 27107
Phone Number: (336) 725-5844	Fax Number: (336) 725-6244	State Transportation Number: N/A	

**IIb. Billing Information**

Bill To: Evo Corporation		Contact Name: Edith Basinger	
Billing Address: 1703 Vargrave Street		Email: edith.basinger@evocorp.net	
City: Winston-Salem	State: North Carolina	Zip: 27107	Phone: (336) 725-5844

**III. Waste Stream Information**

Name of Waste: Concrete and Asphalt	
Process Generating Waste: Excavation	
Physical State: <input checked="" type="checkbox"/> SOLID <input type="checkbox"/> SEMI-SOLID <input type="checkbox"/> POWDER <input type="checkbox"/> LIQUID	
Method of Shipment: <input checked="" type="checkbox"/> BULK <input type="checkbox"/> DRUM <input type="checkbox"/> BAGGED <input type="checkbox"/> OTHER:	
Estimated Annual Volume: 180 Tons	
Frequency: <input checked="" type="checkbox"/> ONE TIME <input type="checkbox"/> ANNUAL	
Disposal Consideration: <input checked="" type="checkbox"/> LANDFILL <input type="checkbox"/> SOLIDIFICATION <input type="checkbox"/> BIOREMEDIATION	

**IV. Representative Sample Certification**

NO SAMPLE TAKEN

Is the representative sample collected to prepare this profile and laboratory analysis, collected in accordance with U.S. EPA 40 CFR 261.20(c) guidelines or equivalent rules?	<input checked="" type="checkbox"/> YES or <input type="checkbox"/> NO
Sample Date: 5/30-31/12	Type of Sample: <input checked="" type="checkbox"/> COMPOSITE SAMPLE <input type="checkbox"/> GRAB SAMPLE
Sample ID Numbers: 13123684-A, 13123683-A-, 13123681-A, RB125380RT-C, RB125397RT-C, BKRU025989-C, 134	



Waste Profile #

**V. Physical Characteristics of Waste**

Characteristic Components		% by Weight (range)			
1. IDW Soilds		99.999			
2. Tetrachloroethylene		0.001			
3.					
4.					
5.					
Color	Odor (describe)	Does Waste Contain Free Liquids?	% Solids	pH:	Flash Point
Black/Grey	None	<input type="checkbox"/> Yes or <input checked="" type="checkbox"/> No	100.00	5-8	>200 °F

**Attach Laboratory Analytical Report (and/or Material Safety Data Sheet) Including Chain of Custody and Required Parameters Provided for this Profile**

Does this waste or generating process contain regulated concentrations of the following Pesticides and/or Herbicides: Chlordane, Endrin, Heptachlor (and it epoxides), Lindane, Methoxychlor, Toxaphene, 2,4-D, or 2,4,5-TP Silvex as defined in 40 CFR 261.33?	<input type="checkbox"/> Yes or <input checked="" type="checkbox"/> No
Does this waste contain reactive sulfides (greater than 500 ppm) or reactive cyanide (greater than 250 ppm) [reference 40 CFR 261.23(a)(5)]?	<input type="checkbox"/> Yes or <input checked="" type="checkbox"/> No
Does this waste contain regulated concentrations of Polychlorinated Biphenyls (PCBs) as defined in 40 CFR Part 761?	<input type="checkbox"/> Yes or <input checked="" type="checkbox"/> No
Does this waste contain concentrations of listed hazardous wastes defined in 40 CFR 261.31, 261.32, 261.33, including RCRA F-Listed Solvents?	<input checked="" type="checkbox"/> Yes or <input type="checkbox"/> No
Does this waste exhibit a Hazardous Characteristic as defined by Federal and/or State regulations?	<input type="checkbox"/> Yes or <input checked="" type="checkbox"/> No
Does this waste contain regulated concentrations of 2,3,7,8-Tetrachlorodibenzodioxin (2,3,7,8-TCDD), or any other dioxin as defined in 40 CFR 261.31?	<input type="checkbox"/> Yes or <input checked="" type="checkbox"/> No
Is this a regulated Radioactive Waste as defined by Federal and/or State regulations?	<input type="checkbox"/> Yes or <input checked="" type="checkbox"/> No
Is this a regulated Medical or Infectious Waste as defined by Federal and/or State regulations?	<input type="checkbox"/> Yes or <input checked="" type="checkbox"/> No
Is this waste a reactive or heat generating waste?	<input type="checkbox"/> Yes or <input checked="" type="checkbox"/> No
Does the waste contain sulfur or sulfur by-products?	<input type="checkbox"/> Yes or <input checked="" type="checkbox"/> No
Is this waste generated at a Federal Superfund Clean Up Site?	<input type="checkbox"/> Yes or <input checked="" type="checkbox"/> No
Is this waste from a TSD facility, TSD-like facility or waste consolidator?	<input type="checkbox"/> Yes or <input checked="" type="checkbox"/> No

**VI. Certification**

I hereby certify that to the best of my knowledge and belief, the information contained herein is a true, complete and accurate description of the waste material being offered for disposal and all known or suspected hazards have been disclosed. All Analytical Results/Material Safety Data Sheets submitted are truthful and complete and are representative of the waste.

I further certify that by utilizing this profile, neither I nor any other employee of the company will deliver for disposal or attempt to deliver for disposal any waste which is classified as toxic waste, hazardous waste or infectious waste, or any other waste material this facility is prohibited from accepting by law. I shall immediately give written notice of any change or condition pertaining to the waste not provided herein. Our company hereby agrees to fully indemnify this disposal facility against any damages resulting from this certification being inaccurate or untrue.

I further certify that the company has not altered the form or content of this profile sheet as provided by Republic Services Inc.

Laura Powers, P.E.

*on behalf of DSCA Petitioner*

Withers & Ravenel

Authorized Representative Name/Title (Type or Print)

#32-043

Company Name

06/04/2012

Authorized Representative Signature

Date



**NON-HAZARDOUS WASTE MANIFEST**

**0343762**

Please print or type.

1. Generator's US EPA ID Number		Manifest Document Number		2. Page 1 of	
3. Generator's Name and Mailing Address Petitioner for DSCA Site # 32-0013 1646 Mail Service Center, Raleigh, NC 27699			5. Generating Location (if different) 1103 West Club Blvd Durham, NC 27701		
4. Phone 919 777-8366			6. Phone ( )		
7. Transporter #1 Company Name EVO Corporation		8. US EPA ID Number		9. Transporter #1's Phone 336-725-5844	
10. Transporter #2 Company Name		11. US EPA ID Number		12. Transporter #2's Phone	
13. Designated T/S/D Facility Name and Site Address Upper Piedmont Regional MSW 9656 Fwd Rd. Rutherford, NC		14. US EPA ID Number		15. Facility's Phone	
16. Waste Shipping Name and Description		17. Allied Waste Approval # and Exp. Date		18. Containers	
a. Concrete and Asphalt		3038129284 5/31/13		19. Total Quantity 11.16	
b.					
c.					
d.					
21. Additional Descriptions for Materials Listed Above Roll off # BR240259M					
22. Special Handling Instructions and Additional Information EVO # 051243					
23. GENERATOR'S CERTIFICATION: I certify the materials described on this manifest are not subject to federal regulations for reporting proper disposal of Hazardous Waste.					
Printed/Typed Name Petitioner for DSCA # 32-0013			Signature		Month Day Year 6 8 12
24. Transporter #1: Acknowledgement of Receipt of Materials					
Printed/Typed Name Pat H... ..			Signature		Month Day Year 6 8 12
25. Transporter #2: Acknowledgement of Receipt of Materials					
Printed/Typed Name			Signature		Month Day Year
26. Discrepancy Indication Space					
27. Facility Owner or Operator: Certification of receipt of waste materials covered by this manifest (except as noted in Item 19)					
Printed/Typed Name FRED HILL			Signature		Month Day Year 6 8 12

GENERATOR

TRANSPORTER

T/S/D FACILITY

GENERATOR'S COPY

Please print or type.

1. Generator's US EPA ID Number	Manifest Document Number	2. Page 1 of	
3. Generator's Name and Mailing Address Petitioner for DSCA Site #32-0013 1646 Mail Service Center Raleigh, NC		5. Generating Location (if different) 1163 West Club Blvd Durham, NC 27701	
4. Phone (919) 767-8366 27699		6. Phone ( )	
7. Transporter #1 Company Name EVO Corporation		8. US EPA ID Number	9. Transporter #1's Phone 336-725-5844
10. Transporter #2 Company Name		11. US EPA ID Number	12. Transporter #2's Phone
13. Designated T/S/D Facility Name and Site Address Upper Piedmont Regional MSW 9650 Oxford Rd Raleigh, NC		14. US EPA ID Number	15. Facility's Phone
16. Waste Shipping Name and Description		17. Allied Waste Approval # and Exp. Date	18. Containers No. Type
a. Concrete and asphalt		3638129284 5/11/13	19. Total Quantity 1367
b.			
c.			
d.			
21. Additional Descriptions for Materials Listed Above Roll off # 13123624			
22. Special Handling Instructions and Additional Information EVO # 051243			
23. GENERATOR'S CERTIFICATION: I certify the materials described on this manifest are not subject to federal regulations for reporting proper disposal of Hazardous Waste.			
Printed/Typed Name Man James Petitioner for DSCA 32-0013		Signature 	Month Day Year 6 2 12
24. Transporter #1: Acknowledgement of Receipt of Materials			
Printed/Typed Name Pat H. ...		Signature 	Month Day Year 6 8 12
25. Transporter #2: Acknowledgement of Receipt of Materials			
Printed/Typed Name		Signature	Month Day Year
26. Discrepancy Indication Space			
27. Facility Owner or Operator: Certification of receipt of waste materials covered by this manifest (except as noted in Item 19)			
Printed/Typed Name		Signature 	Month Day Year 6 8 12

GENERATOR

TRANSPORTER

T/S/D FACILITY

GENERATOR'S COPY

**NON-HAZARDOUS WASTE MANIFEST**

**0343765**

Please print or type.

1. Generator's US EPA ID Number	Manifest Document Number	2. Page 1 of					
3. Generator's Name and Mailing Address Petitioner for DSCA St #32-0013 1046 Mail Service Center Raleigh, NC		5. Generating Location (if different) 1103 West Club Blvd Durham, NC 27701					
4. Phone 919-707-8366 27699		6. Phone ( )					
7. Transporter #1 Company Name EVO Corporation		8. US EPA ID Number	9. Transporter #1's Phone 336-725-5844				
10. Transporter #2 Company Name		11. US EPA ID Number	12. Transporter #2's Phone				
13. Designated T/S/D Facility Name and Site Address Upper Piedmont Regional WSW of 650 Oxford Rd Raleigh, NC		14. US EPA ID Number	15. Facility's Phone				
16. Waste Shipping Name and Description		17. Allied Waste Approval # and Exp. Date		18. Containers	19. Total Quantity	20. Unit Wt/Vol	
				No.			Type
a. Concrete and Asphalt		3638179284 5/31/13			12.49		
b.							
c.							
d.							
21. Additional Descriptions for Materials Listed Above Rolloff #13123621							
22. Special Handling Instructions and Additional Information EVO # 051243							
23. GENERATOR'S CERTIFICATION: I certify the materials described on this manifest are not subject to federal regulations for reporting proper disposal of Hazardous Waste.							
Printed/Typed Name Petitioner for DSCA 32-0013		Signature			Month	Day	Year
					6	8	12
24. Transporter #1: Acknowledgement of Receipt of Materials							
Printed/Typed Name		Signature			Month	Day	Year
					6	08	12
25. Transporter #2: Acknowledgement of Receipt of Materials							
Printed/Typed Name		Signature			Month	Day	Year
26. Discrepancy Indication Space							
27. Facility Owner or Operator: Certification of receipt of waste materials covered by this manifest (except as noted in Item 19)							
Printed/Typed Name		Signature			Month	Day	Year
FRED HILL					6	8	12

GENERATOR

TRANSPORTER

T/S/D FACILITY

GENERATOR'S COPY

**NON-HAZARDOUS WASTE MANIFEST**

**0343763**

Please print or type.

1. Generator's US EPA ID Number	Manifest Document Number	2. Page 1 of					
3. Generator's Name and Mailing Address Petitioner for DSCA Site #32 003 1646 Mail Service Center Raleigh NC 27699		5. Generating Location (if different) 1163 West Club Blvd Durham, NC 27701					
4. Phone 919 767-8366		6. Phone					
7. Transporter #1 Company Name EVO Corporation		8. US EPA ID Number	9. Transporter #1's Phone 336-725-5844				
10. Transporter #2 Company Name		11. US EPA ID Number	12. Transporter #2's Phone				
13. Designated T/S/D Facility Name and Site Address Upper Piedmont Regional MSW 1650 Oxford Rd Reusement NC		14. US EPA ID Number	15. Facility's Phone				
16. Waste Shipping Name and Description		17. Allied Waste Approval # and Exp. Date		18. Containers		19. Total Quantity	20. Unit Wt/Vol
				No.	Type		
a. Concrete and Asphalt		3035129284 5/31/13				12.69	
b.							
c.							
d.							
21. Additional Descriptions for Materials Listed Above Roll off # 13123							
22. Special Handling Instructions and Additional Information EVO # 051243							
23. GENERATOR'S CERTIFICATION: I certify the materials described on this manifest are not subject to federal regulations for reporting proper disposal of Hazardous Waste.							
Printed/Typed Name Petitioner, DSCA 32-003				Signature		Month Day Year 6 8 12	
24. Transporter #1: Acknowledgement of Receipt of Materials							
Printed/Typed Name T. Myers 2/11/19				Signature		Month Day Year 6 8 12	
25. Transporter #2: Acknowledgement of Receipt of Materials							
Printed/Typed Name				Signature		Month Day Year	
26. Discrepancy Indication Space							
27. Facility Owner or Operator: Certification of receipt of waste materials covered by this manifest (except as noted in Item 19)							
Printed/Typed Name				Signature		Month Day Year 6 8 12	

GENERATOR

TRANSPORTER

T/S/D FACILITY

**GENERATOR'S COPY**